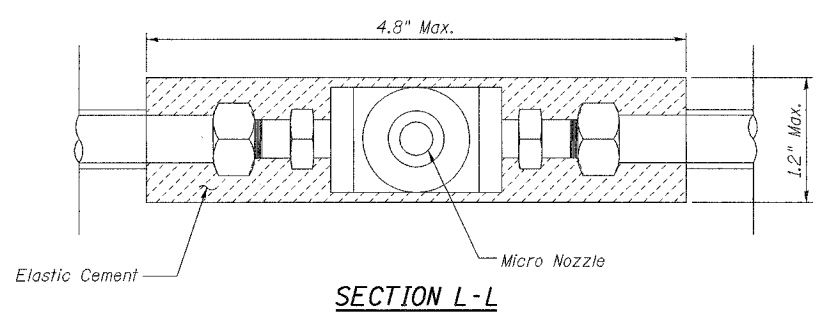
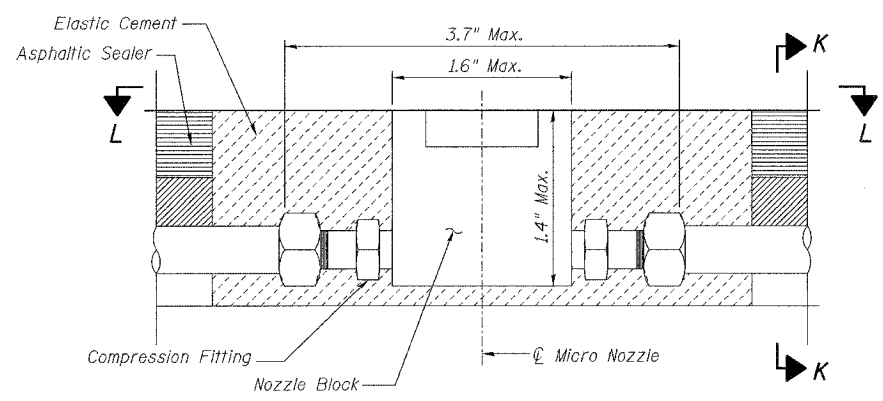
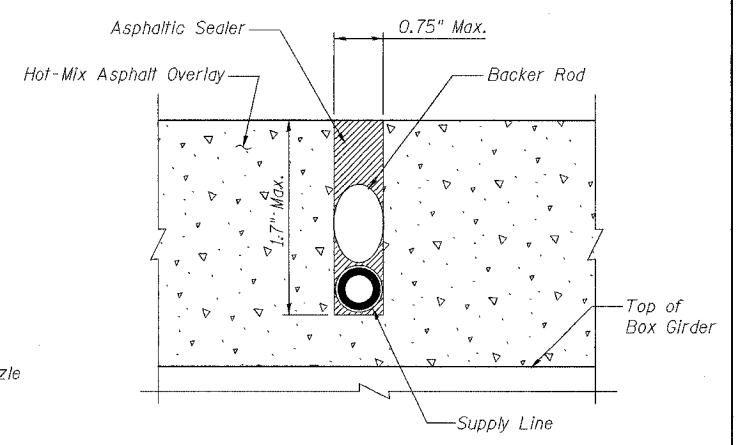
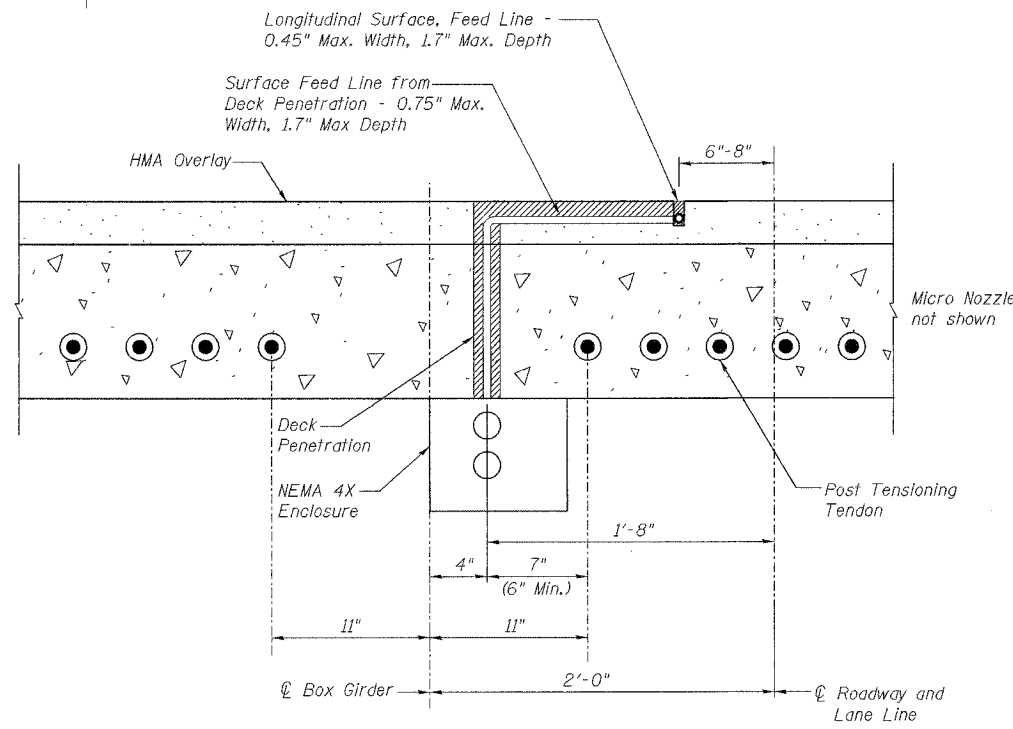
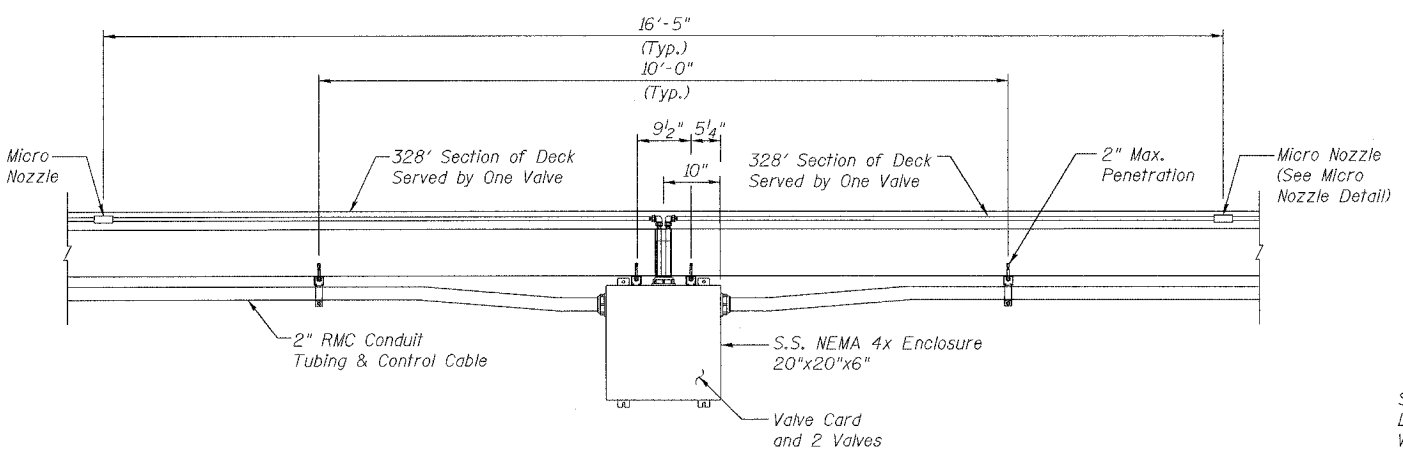
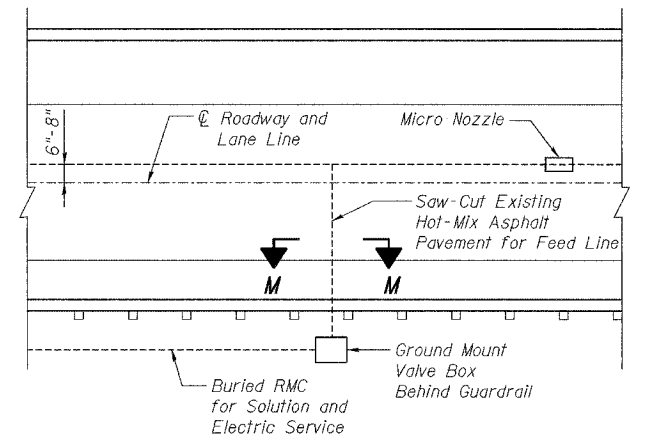
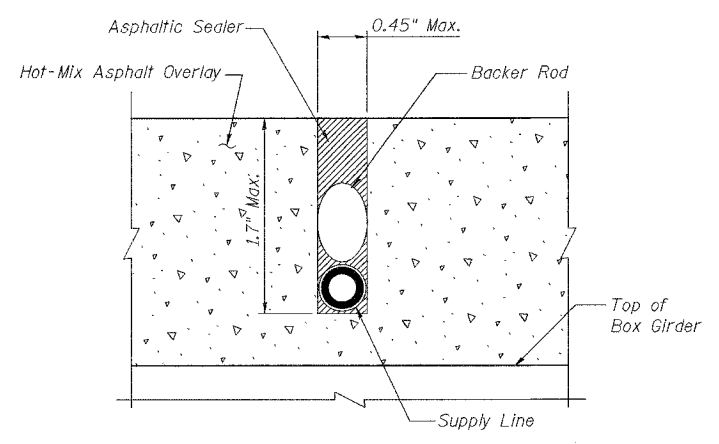
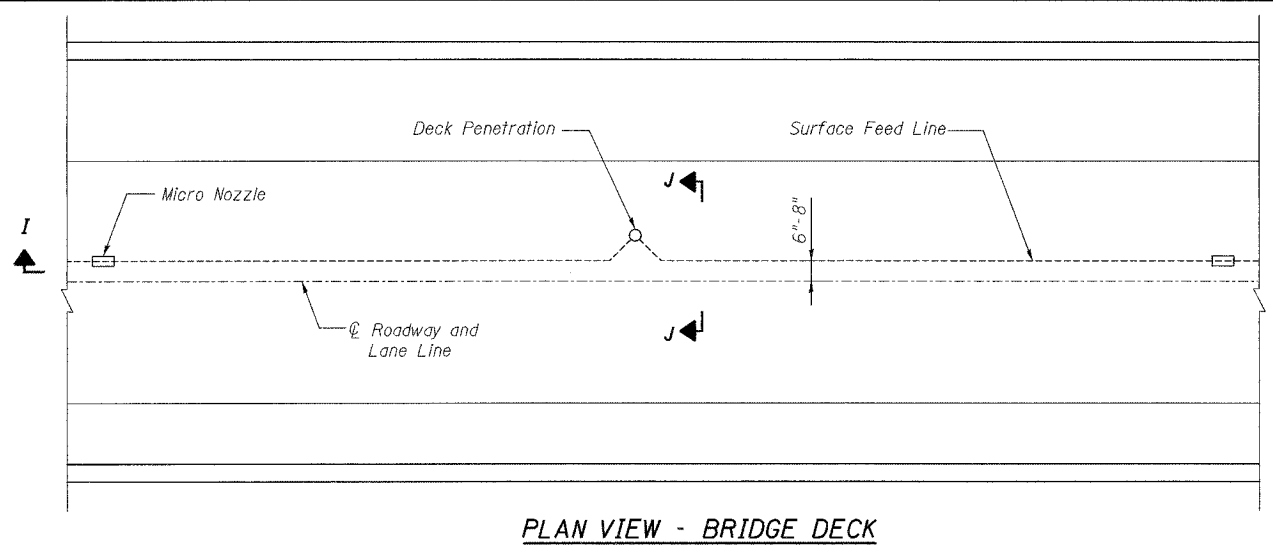


| | | | | |
|-----------------------|----------|-----------|------------------|--------------|
| ROUTE NO. | SECT. | COUNTY | SHEET NO. | TOTAL SHEETS |
| F.A.I. 39 | 201-1BR | WINNEBAGO | 39 | 40 |
| FED. ROAD DIST. NO. 7 | ILLINOIS | | FED. AID PROJECT | |
| CONTRACT NO. 64857 | | | | |



Note: Location of Deck Penetration May be Adjusted as Long as 6" Min. Spacing (C to C) from Post Tensioning Tendon is Maintained.

| REVISION | DATE | DESCRIPTION |
|---|-----------------|-------------------|
| STATE OF ILLINOIS DEPARTMENT OF TRANSPORTATION FAST DETAILS FOR MICRO SPRAY DESIGN I-39 (FAI 39) OVER KISHWAUKEE RIVER SECTION 201-1BR WINNEBAGO COUNTY STATION 2425+00 STRUCTURE NOS. 101-0133 (S.B.) & 101-0134 (N.B.) | | |
| | | CHICAGO, ILLINOIS |
| DRAWING NO. 39 | SCALE N.T.S. | DATE FEB 2007 |
| | | SHEET NO. F-5 |

Date: 2/2/2007 Time: 3:49:28 PM
 File name: p:\64635-kishwaukee-river\cadd\final\sheet\Fagedf02.sst

Designed by: GCV
 Checked by: JLP
 Drafted by: JV
 Checked by: JLP