

F.A.P. RTE.	SECTION	COUNTY	TOTAL SHEETS	SHEET NO.
738	4TS-4	WINNEBAGO	7	1

STATE OF ILLINOIS  
DEPARTMENT OF TRANSPORTATION  
DIVISION OF HIGHWAYS

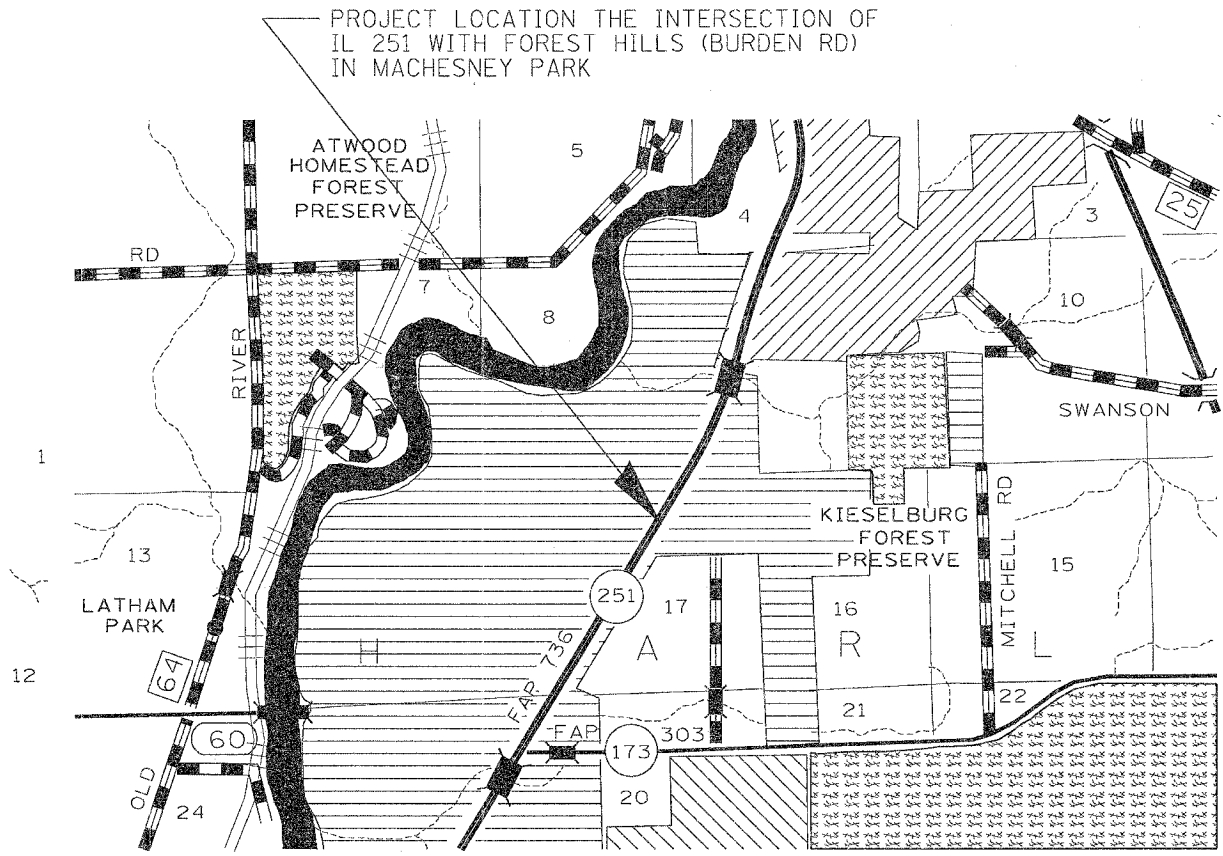
**PROPOSED  
HIGHWAY PLANS**

FAP ROUTE 738 (IL 251)  
SECTION 4TS-4  
PROJECT HSIP-0738(022)  
WINNEBAGO COUNTY  
C-92-075-07

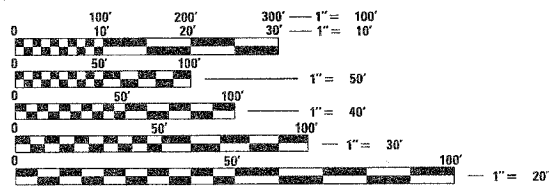
- INDEX OF SHEETS  
1 COVER SHEET  
STANDARDS  
2 SUMMARY OF QUANTITIES  
3 GENERAL NOTES AND UTILITIES  
4 SIGNAL PLANS  
5 REMOVAL PLANS  
6 PHASING AND CABLE DETAILS  
7 SERVICE AND CABINET DETAILS

STANDARDS

- 000001-04 STANDARDS SYMBOLS, ABBREVIATIONS, AND PATTERNS
- 701006-02 OFF-ROAD OPERATIONS 2L, 2W, 4.5 m (15') TO 600 mm (24") FROM PAVEMENT EDGE
- 701201-02 LANE CLOSURE, 2L, 2W, DAY ONLY, FOR SPEEDS > 45 MPH
- 701301-02 LANE CLOSURE, 2L, 2W, SHORT TIME OPERATIONS
- 701311-02 LANE CLOSURE, 2L, 2W, MOVING OPERATIONS - DAY ONLY
- 701701-04 URBAN LANE CLOSURE MULTILANE INTERSECTION
- 720016-01 MAST ARM MOUNTED STREET NAME SIGNS
- 805001 ELECTRICAL SERVICE INSTALLATION DETAILS
- 814001-01 CONCRETE HANDHOLES
- 814006-01 DOUBLE HANDHOLES
- 857001 STANDARD DESIGNATION DIAGRAM AND PHASE SEQUENCE
- 862001 UNINTERRUPTABLE POWER SUPPLY (UPS)
- 873001-01 TRAFFIC SIGNAL GROUNDING
- 877011-02 STEEL COMBINATION MAST ARM ASSEMBLY AND POLE
- 878001-05 CONCRETE FOUNDATION DETAILS
- 880006 TRAFFIC SIGNAL MOUNTING DETAILS



T. 45N. - R. 1-2 E.



FULL SIZE PLANS HAVE BEEN PREPARED USING STANDARD ENGINEERING SCALES. REDUCED SIZED PLANS WILL NOT CONFORM TO STANDARD SCALES. IN MAKING MEASUREMENTS ON REDUCED PLANS, THE ABOVE SCALES MAY BE USED.

J.U.L.I.E.  
JOINT UTILITY LOCATION INFORMATION FOR EXCAVATION  
1-800-892-0123

CONTRACT NO. 64D09

STATE OF ILLINOIS  
DEPARTMENT OF TRANSPORTATION  
DIVISION OF HIGHWAYS

SUBMITTED Feb 7 2007  
Joseph E. Grzesek  
DEPUTY DIRECTOR OF HIGHWAYS, REGION ENGINEER

March 23, 20 07  
Eric E. Harsh  
ENGINEER OF DESIGN AND ENVIRONMENT

March 23, 20 07  
Milton R. See, P.E.  
DIRECTOR OF HIGHWAYS, CHIEF ENGINEER

**PRINTED BY THE AUTHORITY  
OF THE STATE OF ILLINOIS**

F.A.P. RTE.	SECTION	COUNTY	TOTAL SHEETS	SHEET NO.
138	475-4	WINNEBAGO	7	2
STA.		TO STA.		
FED. ROAD DIST. NO.		ILLINOIS FED. AID PROJECT		

# SUMMARY OF QUANTITIES

Y031-1F

PAY CODE	ITEM	UNIT	TOTAL
X0325335	CONDUIT INSTALLED, 1 1/2" DIA., NON-METALLIC	FOOT	12
67100100	MOBILIZATION	L SUM	1
70100450	TRAFFIC CONTROL AND PROTECTION, STANDARD 701201	L SUM	1
70102635	TRAFFIC CONTROL AND PROTECTION, STANDARD 701701	L SUM	1
80500100	SERVICE INSTALLATION, TYPE A	EACH	1
81400100	HANDHOLE	EACH	5
81400300	DOUBLE HANDHOLE	EACH	1
81702110	ELECTRIC CABLE IN CONDUIT, 600V (XLP TYPE USE) 1/C NO. 10	FOOT	1528
82102400	LUMINAIRE, SODIUM VAPOR, HORIZONTAL MOUNT, 400 WATT	EACH	4
82500605	LIGHTING CONTROLLER PHOTOCCELL RELAY	EACH	1
85000300	MAINTENANCE OF EXISTING TRAFFIC SIGNAL INSTALLATION	L SUM	1
85700300	FULL-ACTUATED CONTROLLER AND TYPE V CABINET	EACH	1
86200200	UNINTERRUPTIBLE POWER SUPPLY, STANDARD	EACH	1
87301245	ELECTRIC CABLE IN CONDUIT, SIGNAL, NO. 14 5C	FOOT	2533
87301255	ELECTRIC CABLE IN CONDUIT, SIGNAL, NO. 14 7C	FOOT	438
87301815	ELECTRIC CABLE IN CONDUIT, SERVICE, NO 6 3C	FOOT	32
87502480	TRAFFIC SIGNAL POST, GALVANIZED STEEL, 14 FT.	EACH	2
87502500	TRAFFIC SIGNAL POST, GALVANIZED STEEL, 16 FT.	EACH	1
87702850	STEEL COMBINATION MAST ARM ASSEMBLY AND POLE 24 FT.	EACH	1
87702860	STEEL COMBINATION MAST ARM ASSEMBLY AND POLE 26 FT.	EACH	1
87702980	STEEL COMBINATION MAST ARM ASSEMBLY AND POLE 50 FT.	EACH	2
87800100	CONCRETE FOUNDATION, TYPE A	FOOT	9

Y031-1F  
90% FED  
5% STATE  
10% VILLAGE

87800150	CONCRETE FOUNDATION, TYPE C	FOOT	3
87800400	CONCRETE FOUNDATION, TYPE E, 30-INCH DIAMETER	FOOT	27
87800415	CONCRETE FOUNDATION, TYPE E, 36-INCH DIAMETER	FOOT	30
88040070	SIGNAL HEAD, POLYCARBONATE, LED, 1-FACE, 3-SECTION, BRACKET MOUNTED	EACH	2
88040090	SIGNAL HEAD, POLYCARBONATE, LED, 1-FACE, 3-SECTION, MAST ARM MOUNTED	EACH	7
88040120	SIGNAL HEAD, POLYCARBONATE, LED, 1-FACE, 4-SECTION, MAST ARM MOUNTED	EACH	2
88040150	SIGNAL HEAD, POLYCARBONATE, LED, 1-FACE, 5-SECTION, BRACKET MOUNTED	EACH	1
88040160	SIGNAL HEAD, POLYCARBONATE, LED, 1-FACE, 5-SECTION, MAST ARM MOUNTED	EACH	1
88200400	TRAFFIC SIGNAL BACKPLATE, FORMED PLASTIC	EACH	10
X0323153	ELECTRIC CABLE IN CONDUIT, GROUND, NO. 6 1C (GREEN)	FOOT	537
X0324887	CONDUIT INSTALLED, 2 1/2" <sup>DIA.</sup> NON-METALLIC	FOOT	164
X0324888	CONDUIT INSTALLED, 4" <sup>DIA.</sup> NON-METALLIC	FOOT	539
X0962500	REMOVE EXISTING TRAFFIC SIGNAL EQUIPMENT	L SUM	1
X7240500	RELOCATE EXISTING SIGNS	EACH	10
* X7800500	POLYUREA PAVEMENT MARKING - LETTERS AND SYMBOLS, SPECIAL	SQ. FT.	42
* X7800510	POLYUREA PAYMENT MARKING SPECIAL - LINE 4"	FOOT	409
* X7800580	POLYUREA PAVEMENT MARKING SPECIAL - LINE 24"	FOOT	38
XX002192	RELOCATE EXISTING EMERGENCY VEHICLE PRIORITY SYSTEM, COMPLETE	EACH	1
XX003165	VIDEO CAMERA DETECTOR SYSTEM	EACH	1

\* SPECIALTY ITEM

REVISIONS	
NAME	DATE

ILLINOIS DEPARTMENT OF TRANSPORTATION

SCALE: VERT.  
HORIZ.  
DATE

DRAWN BY  
CHECKED BY

## SUMMARY OF QUANTITIES

PLDT DATE = Wed Feb 07 09:20:01 2007  
FILE NAME = \\s22ar-v\users\hills\proj\proj\11\_251\_e\_FOREST\_HILLS\Forest\_hills\_plan\_shts.dgn  
PLOT NO = 00 / 11  
USER NAME = HILL

F.A.P. RTE.	SECTION	COUNTY	TOTAL SHEETS	SHEET NO.
738	4TS-4	WINNEBAGO	7	3
STA.		TO STA.		
FED. ROAD DIST. NO.	ILLINOIS	FED. AID PROJECT		

# GENERAL NOTES AND UTILITIES

## UTILITIES

NAME	TYPE	TELEPHONE	JULIE MEMBER
MR DAVE SCHACHT COMMONWEALTH EDISON COMPANY 123 ENERGY AVE ROCKFORD, IL 61109	ELECTRIC	630-437-2129	YES 800-892-0123
MR JEREMY SCHNACK AT&T 635 18TH STREET ROCK ISLAND, IL 61201	TELEPHONE	309-793-4456	YES 800-892-0123
MS. CONSTANCE LANE NICOR GAS CO 1844 FERRY RD NAPERVILLE, IL 60563-9600	GAS	630-983-8676	YES 800-892-0123
MR EDWARD RICE NORTH PARK PUBLIC WATER DIST. 1350 TURRET DRIVE MACHESNEY PARK, IL 61115	WATER	815-633-5461	YES 800-892-0123
MR MICHAEL OLSON ROCK RIVER WATER RECLAMATION DISTRICT P.O. BOX 7480/3333 KISHWAUKEE ROCKFORD, IL 61126-7480	SEWER	815-387-7400	YES 800-892-0123
MR MIKE OWENS INSIGHT COMMUNICATIONS OF ROCKFORD 4450 KISHWAUKEE STREET ROCKFORD, IL 61109	CATV	815-395-8977	YES 800-892-0123
MR PAUL BAUMANN McLEOD USA 900 COMMERCE DRIVE SUITE 203 OAK BROOK, IL 60523	TELEPHONE	217-525-0078	YES 800-892-0123
MR PAUL SHEPPARD VILLAGE OF MACHESNEY PARK 300 MACHESNEY ROAD MACHESNEY PARK, IL 61111	WATER & SEWER	815-877-5432	YES 800-892-0123

### GENERAL NOTES:

1. THE CONTRATOR SHALL COORDINATE THIS PROJECT WITH THE CITY OF MACHESNEY PARK'S STREET PROJECT IN AUGUST OF 2007. THE CONTRATOR SHALL CONTACT THE SUPERINTENDANT OF STREETS, PAUL SHEPPARD, 815-877-5432, TWO WEEKS PRIOR TO START OF WORK.
2. NO SIGNAL WORK WILL BE ALLOWED UNTIL ALL COMPONENTS TO COMPLETE THE PROJECT HAVE ARRIVED ON THE JOB SITE.
3. THE EXISTING TRAFFIC SIGNALS SHALL REMAIN IN OPERATING ORDER DURING THE INSTALLATION OF PROPOSED SIGNALS AND PAID FOR AS, MAINTENANCE OF EXISTING TRAFFIC SIGNAL INSTALLATION, LUMP SUM.
4. EXISTING SIGNS SHALL NOT BE REMOVED UNTIL THE PROGRESS OF THE WORK NECESSITATES SUCH REMOVAL. AT WHICH POINT THE SIGNS SHALL BE RELOCATED TO THE NEW LOCATIONS.
5. THE ACTUAL LOCATION OF ALL SIGNAL FOUNDATIONS, HANDHOLES AND TRAFFIC CONTROLLER WILL BE DETERMINED BY THE FIELD ENGINEER.
6. ALL TRAFFIC SIGNAL HEAD WILL BE ALIGNED WITH THE CENTER APPROPRIATE LANE OR AS DIRECTED BY THE ENGINEER.
7. THE CONTRACTOR SHALL BE RESPONSIBLE FOR PROTECTING UTILITIES PROPERTY DURING CONSTRUCTION OPERATIONS AS OUTLINED IN ARTICLE 107.31 OF THE CURRENT STANDARD SPECIFICATIONS FOR ROAD AND BRIDGE CONSTRUCTION. A MINIMUM OF 48 HOURS ADVANCE NOTICE IS REQUIRED FOR NON- EMERGENCY WORK. THE JULIE NUMBER IS 800-892-0123. THE FOLLOWING LISTED UTILITIES LOCATED WITHIN THE PROJECT LIMITS OR IMMEDIATELY ADJACENT TO THE PROJECT CONSTRUCTION LIMITS.
8. THE FOLLOWING SIGNS SHALL BE RELOCATED UNDER THE PAY CODE, RELOCATE EXISTING SIGNS;  
 4 EACH MAST -ARM MOUNTED "STREET NAME"  
 2 EACH MAST -ARM MOUNTED "LEFT TURN"  
 2 EACH POST MOUNTED "LEFT TURN"  
 2 EACH POST MOUNTED "ONE WAY"  
 ANY OTHER SIGNS THAT MAY REQUIRE RELOCATION DUE TO THIS PROJECT SHALL BE RELOCATED UNDER ART 107.25 OF THE CURRENT "STANDARD SPECIFICATIONS FOR ROAD AND BRIDGE CONSTRUCTION."

PLOT DATE = Wed Feb 07 08:16:00 2007  
 PLOT SCALE = 20.0000 / IN  
 USER NAME = h11141

REVISIONS		ILLINOIS DEPARTMENT OF TRANSPORTATION
NAME	DATE	
		SCALE: VERT. HORIZ. DATE
DRAWN BY		CHECKED BY

F.A.P. RTE.	SECTION	COUNTY	TOTAL SHEETS	SHEET NO.
738	4TS-4	WINNEBAGO	7	4
STA.		TO STA.		
FED. ROAD DIST. NO.	ILLINOIS	FED. AID PROJECT		

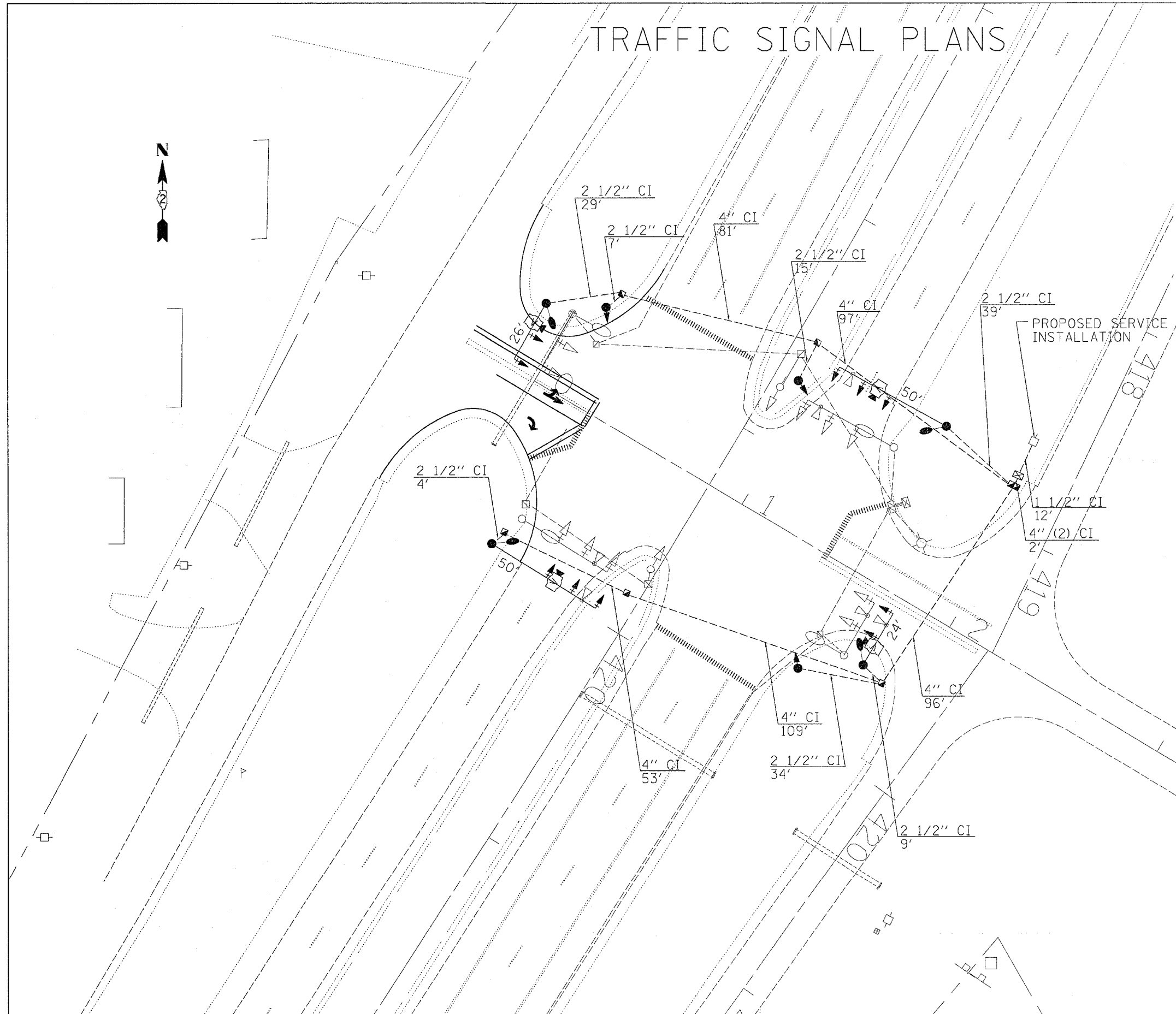
# TRAFFIC SIGNAL PLANS

MAST ARM FOUNDATIONS		
MAST ARM LENGTH (FT)	DIAMETER (IN)	LENGTH (FT)
24	30	13.5
50	36	15
26	30	13.5
50	36	15
		57

TYPE A FOUNDATION FOR SIGNAL POST 3 @ 3' EACH

### LEGEND

- EXISTING CONTROLLER
- NEW CONTROLLER
- EXISTING STEEL MAST ARM ASSEMBLY AND POLE
- NEW STEEL MAST ARM ASSEMBLY AND POLE
- EXISTING SIGNAL HEAD AND POST
- NEW SIGNAL HEAD AND POST
- EXISTING SIGNAL HEAD
- NEW SIGNAL HEAD WITH BACKPLATE
- EXISTING HANDHOLE
- NEW HANDHOLE
- NEW HEAVY-DUTY HANDHOLE
- NEW DOUBLE HANDHOLE
- EXISTING CONDUIT
- EXISTING LUMINAIRE
- NEW LUMINAIRE
- NEW CONDUIT INSTALLED, NON-METALLIC
- UPPER NUMERAL INDICATES LENGTH
- "CI" INDICATES CONDUIT INSTALLED, NON -METALLIC WHETHER PUSHED OR TRENCHED
- LOWER NUMERAL INDICATES SIZE OF CONDUIT
- PRIORITY VEHICLE DETECTION TO BE RELOCATED TO PROPOSED MAST-ARMS
- VIDEO DETECTION CAMERA



PLOT DATE = Wed Feb 07 08:16:01 2007  
 FILE NAME = \\s22ar-r2\user\hills\hills\proj\418\418\plan\_sheets.dgn  
 PLOT SCALE = 20:0000  
 USER NAME = hills

REVISIONS	
NAME	DATE

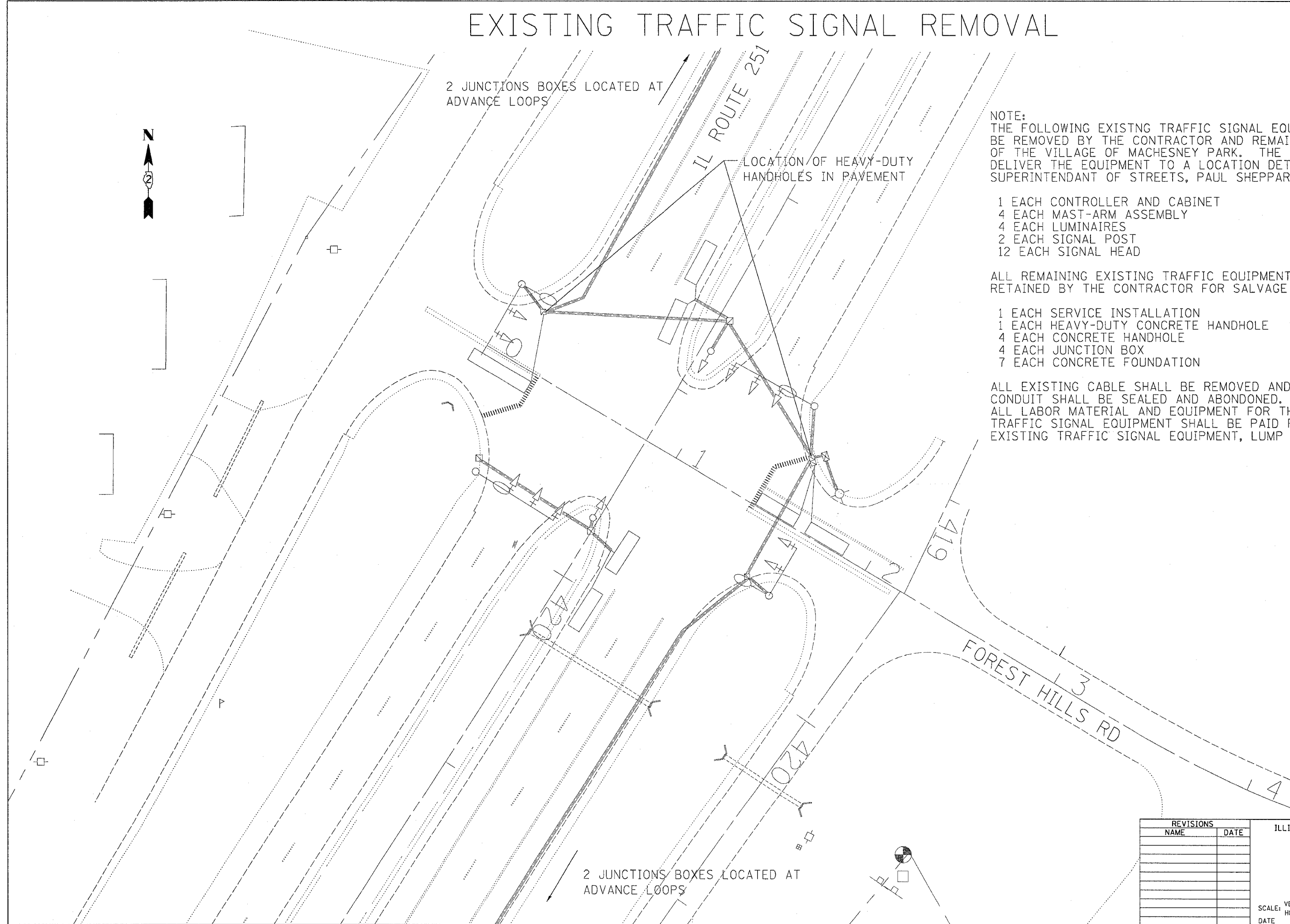
ILLINOIS DEPARTMENT OF TRANSPORTATION

SCALE: VERT. \_\_\_\_\_  
 HORIZ. \_\_\_\_\_  
 DATE \_\_\_\_\_

DRAWN BY \_\_\_\_\_  
 CHECKED BY \_\_\_\_\_

F.A.P. RTE.	SECTION	COUNTY	TOTAL SHEETS	SHEET NO.
738	4TS-4	WINNEBAGO	7	5
STA.		TO STA.		
FED. ROAD DIST. NO.		ILLINOIS FED. AID PROJECT		

# EXISTING TRAFFIC SIGNAL REMOVAL



NOTE:  
 THE FOLLOWING EXISTING TRAFFIC SIGNAL EQUIPMENT SHALL BE REMOVED BY THE CONTRACTOR AND REMAIN THE PROPERTY OF THE VILLAGE OF MACHESNEY PARK. THE CONTRACTOR SHALL DELIVER THE EQUIPMENT TO A LOCATION DETERMINED BY THE SUPERINTENDANT OF STREETS, PAUL SHEPPARD, 815-877-5432.

- 1 EACH CONTROLLER AND CABINET
- 4 EACH MAST-ARM ASSEMBLY
- 4 EACH LUMINAIRES
- 2 EACH SIGNAL POST
- 12 EACH SIGNAL HEAD

ALL REMAINING EXISTING TRAFFIC EQUIPMENT SHALL BE RETAINED BY THE CONTRACTOR FOR SALVAGE VALUE.

- 1 EACH SERVICE INSTALLATION
- 1 EACH HEAVY-DUTY CONCRETE HANDHOLE
- 4 EACH CONCRETE HANDHOLE
- 4 EACH JUNCTION BOX
- 7 EACH CONCRETE FOUNDATION

ALL EXISTING CABLE SHALL BE REMOVED AND THE EXISTING CONDUIT SHALL BE SEALED AND ABANDONED.  
 ALL LABOR MATERIAL AND EQUIPMENT FOR THE REMOVAL OF EXISTING TRAFFIC SIGNAL EQUIPMENT SHALL BE PAID FOR UNDER REMOVE EXISTING TRAFFIC SIGNAL EQUIPMENT, LUMP SUM, COMPLETE.

PLOT DATE = Wed Feb 07 08:16:01 2007  
 FILE NAME = \\s251w2\user\hllal\Project\AIL 251 & FOREST HILLS\Forest Hills plan sheets.dgn  
 PLOT SCALE = 26.00000 1/4 IN.  
 USER NAME = hllal

REVISIONS	
NAME	DATE

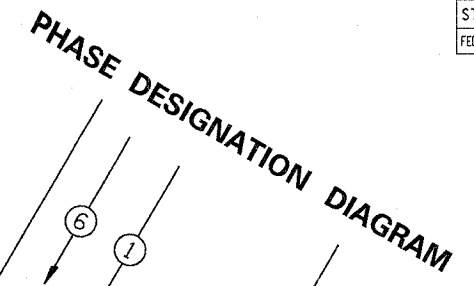
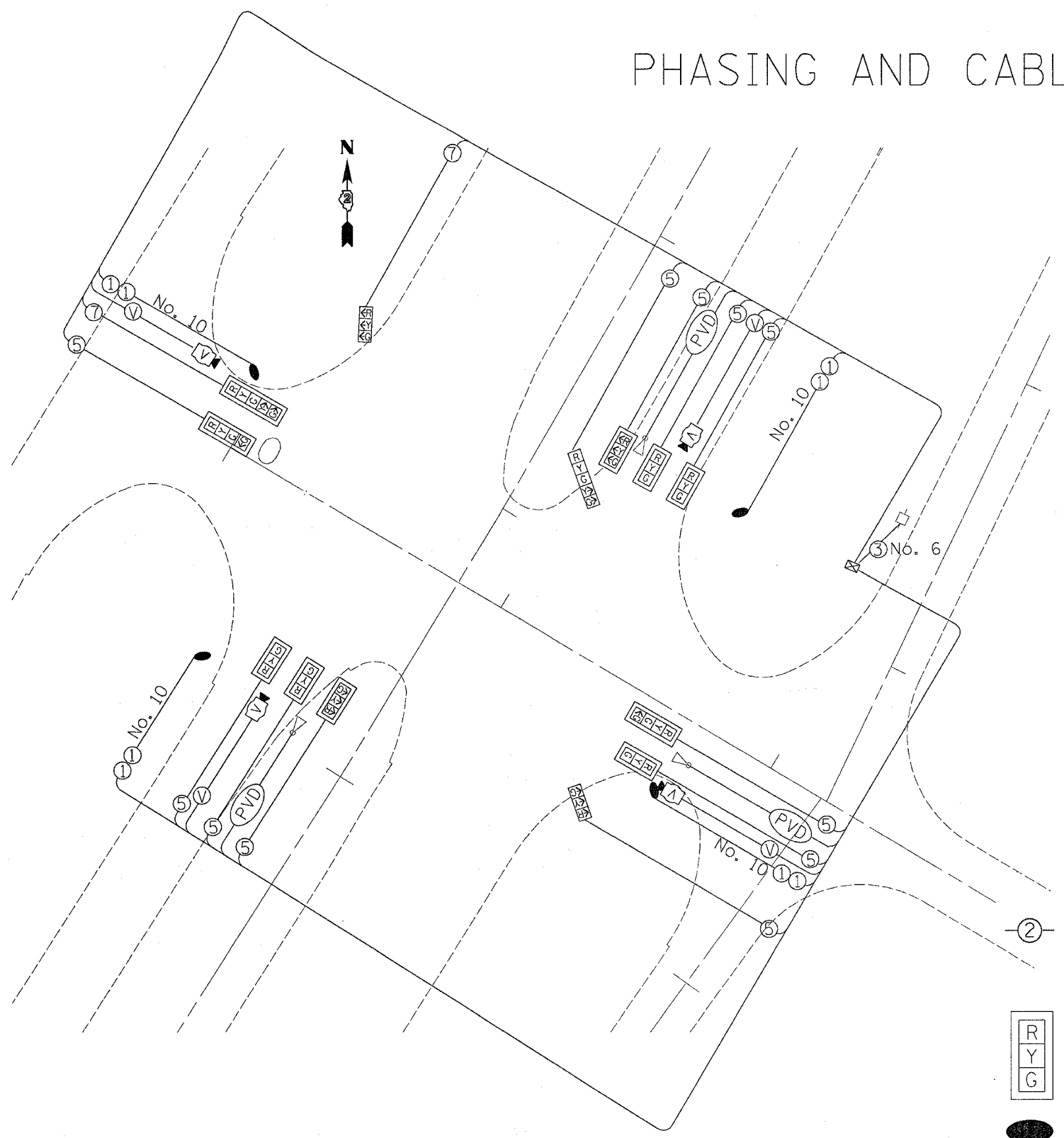
ILLINOIS DEPARTMENT OF TRANSPORTATION

SCALE: VERT. \_\_\_\_\_  
 HORIZ. \_\_\_\_\_  
 DATE \_\_\_\_\_

DRAWN BY \_\_\_\_\_  
 CHECKED BY \_\_\_\_\_

F.A.P. RTE.	SECTION	COUNTY	TOTAL SHEETS	SHEET NO.
73B	4TS-4	WINNEBAGO	7	6
STA.		TO STA.		
FED. ROAD DIST. NO.	ILLINOIS	FED. AID PROJECT		

# PHASING AND CABLE DETAILS

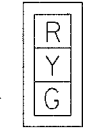


REFER TO STANDARD 857001

NUMBER REFERS TO ASSOCIATED PHASE  
VEHICULAR MOVEMENT

DETECTOR ASSIGNMENT		
DETECTOR	PHASE NO.	DIRECTION
A	4	WB PRESENT
B	3	EB PRESENT
C	2	NB FAR ADVANCE
D	2	NB MID ADVANCE
E	2	NB PRESENT
F	5	NB LEFT
G	6	SB FAR ADVANCE
H	6	SB MID ADVANCE
I	6	SB PRESENT
J	1	SB LEFT

LEGEND  
 INDICATES NUMBER OF NEW CONDUCTORS.  
 ALL CABLE IS NO. 14 EXCEPT AS INDICATED.  
 "PVD" INDICATES PRIORITY VEHICLE DETECTION  
 "V" INDICATE VIDEO DETECTION



NEW SIGNAL HEAD WITH OR WITHOUT BACKPLATE



LUMINAIRE, 400 WATT



EXISTING PRIORITY VEHICLE DETECTION



VIDEO DETECTION

REVISIONS	
NAME	DATE

ILLINOIS DEPARTMENT OF TRANSPORTATION

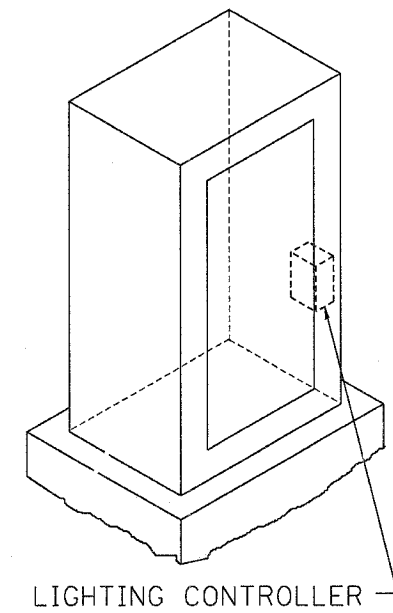
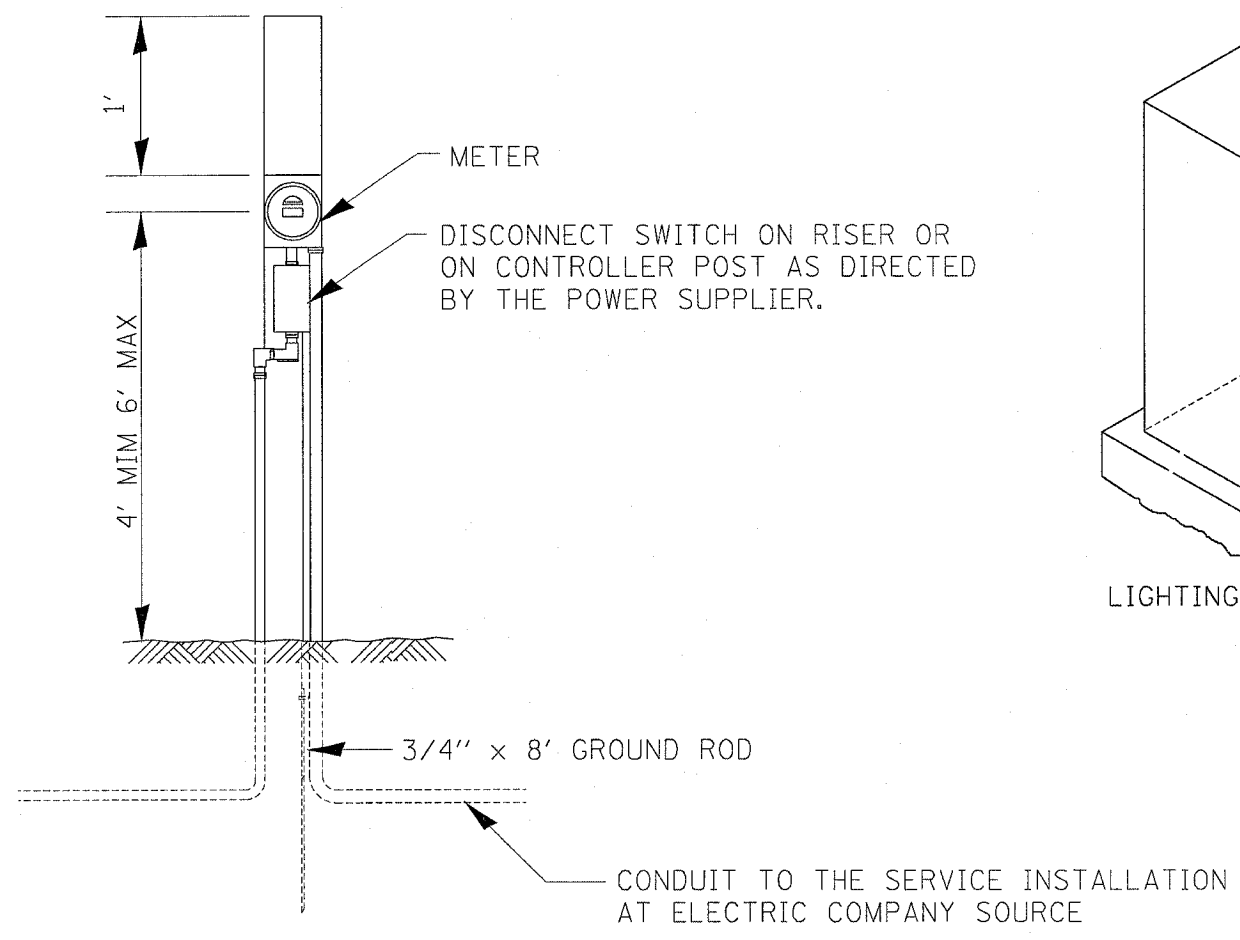
SCALE: VERT. DATE  
HORIZ.

DRAWN BY  
CHECKED BY

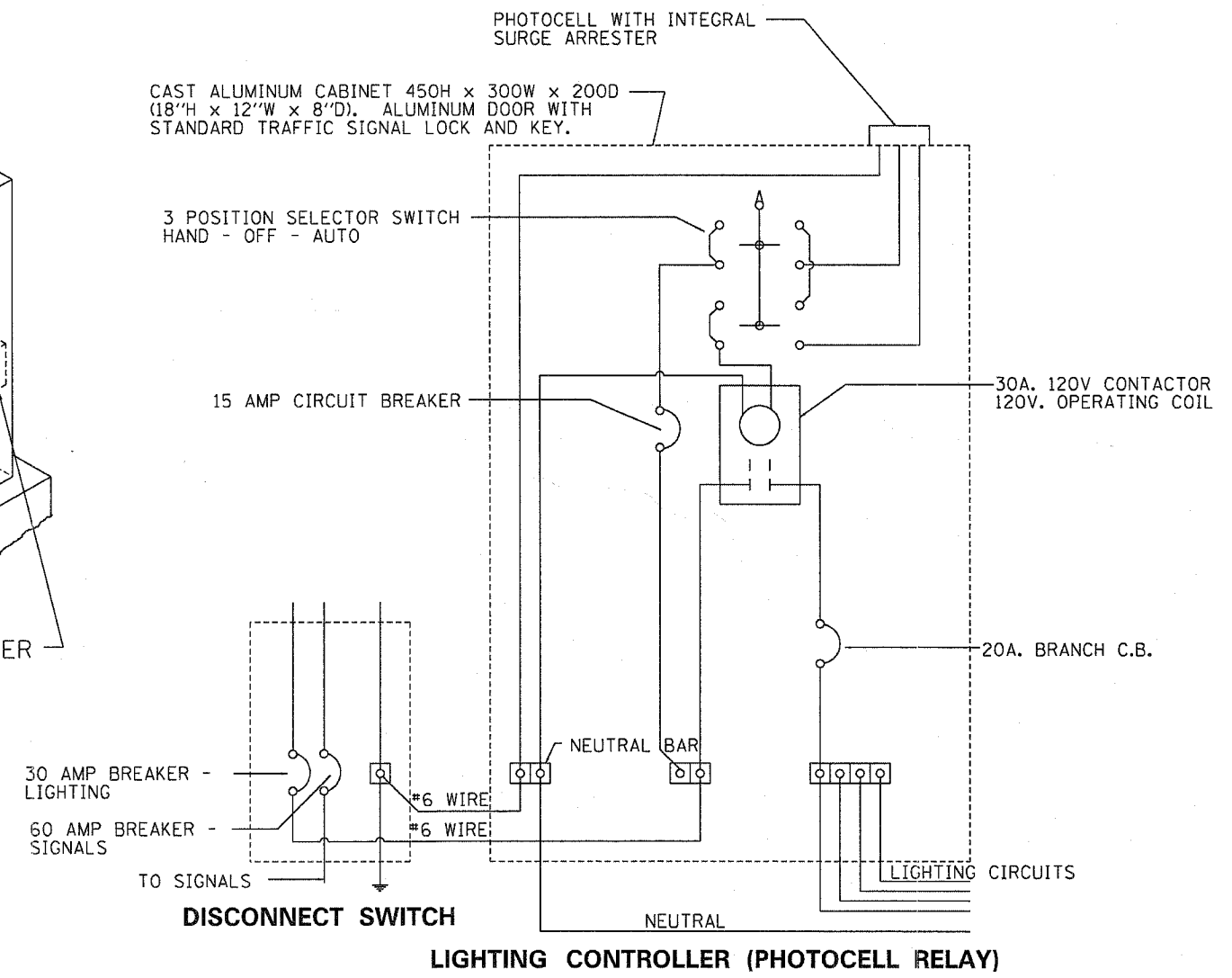
PLOT DATE = Wed Feb 07 08:16:28 2007  
 PLOT BY = h11k1  
 PLOT SCALE = 20' = 1" / IN  
 USER NAME = h11k1

F.A.P. RTE.	SECTION	COUNTY	TOTAL SHEETS	SHEET NO.
738	4TS-4	WINNEBAGO	7	7
STA.		TO STA.		
FED. ROAD DIST. NO.		ILLINOIS FED. AID PROJECT		

# SERVICE AND CABINET DETAILS



CAST ALUMINUM CABINET 450H x 300W x 200D (18"H x 12"W x 8"D). ALUMINUM DOOR WITH STANDARD TRAFFIC SIGNAL LOCK AND KEY.



ELECTRIC SERVICE INSTALLATION, TYPE A  
(SEE SPECIAL PROVISIONS)  
(DETAIL ONLY SHOW GENERAL SERVICE WHICH VARIES BY PROVIDERS)

DATE: Feb 07 08:00 AM 2007  
 FILE: h:\projects\winnebago\proj\pers\l\251\FORST HILLS\Forest hills plan sheet.dgn  
 PLOT SCALE: 1/8" = 1'-0"  
 USER NAME: hjl1

REVISIONS	
NAME	DATE

ILLINOIS DEPARTMENT OF TRANSPORTATION

SCALE: VERT. DATE: HORIZ.

DRAWN BY: CHECKED BY: