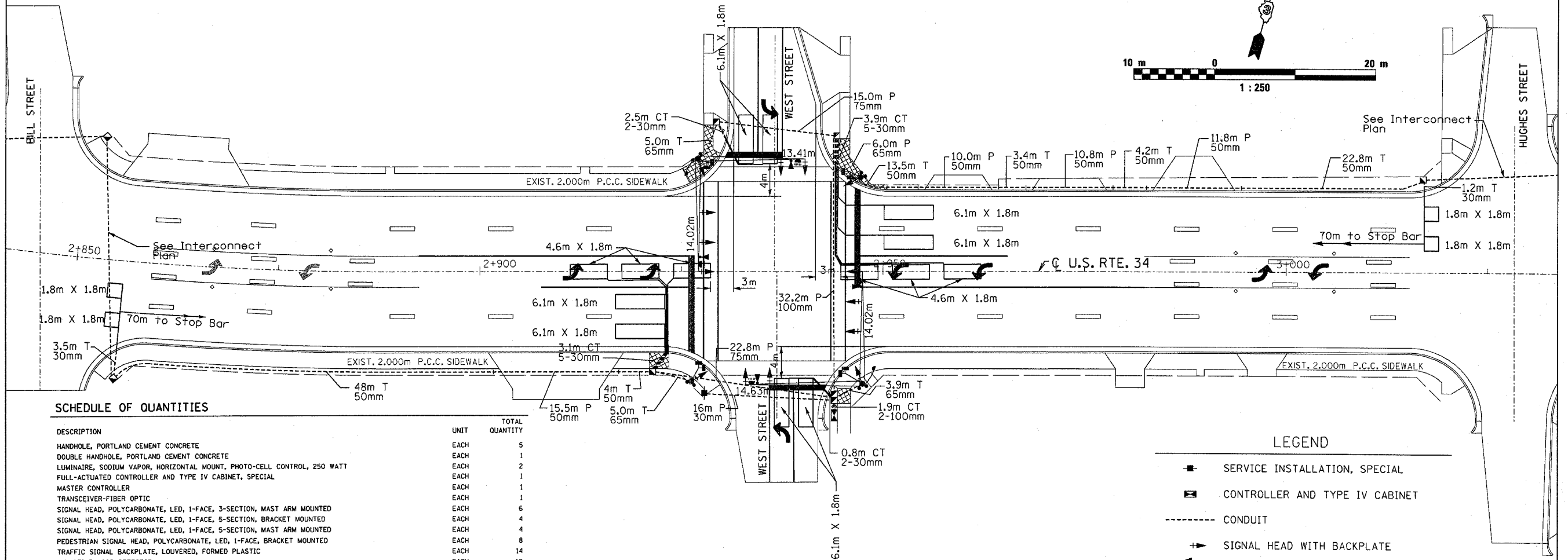


F.A.P. RTE.	SECTION	COUNTY	TOTAL SHEETS	SHEET NO.
*	**	KENDALL	12	4
STA.	TO STA.			
FED. ROAD DIST. NO.	ILLINOIS FED. AID PROJECT			

- FAP ROUTE 591 (US 34)
- SECTION (15R) TS-1 & I

CONSTRUCTION NOTE:

PEDESTRIAN SIGNAL HEADS SHALL BE INSTALLED TO ALIGN WITH CROSSWALKS IN ORDER TO ENSURE PEDESTRIAN VISIBILITY.



SCHEDULE OF QUANTITIES

DESCRIPTION	UNIT	TOTAL QUANTITY
HANDHOLE, PORTLAND CEMENT CONCRETE	EACH	5
DOUBLE HANDHOLE, PORTLAND CEMENT CONCRETE	EACH	1
LUMINAIRE, SODIUM VAPOR, HORIZONTAL MOUNT, PHOTO-CELL CONTROL, 250 WATT	EACH	2
FULL-ACTUATED CONTROLLER AND TYPE IV CABINET, SPECIAL	EACH	1
MASTER CONTROLLER	EACH	1
TRANSCIVER-FIBER OPTIC	EACH	1
SIGNAL HEAD, POLYCARBONATE, LED, 1-FACE, 3-SECTION, MAST ARM MOUNTED	EACH	6
SIGNAL HEAD, POLYCARBONATE, LED, 1-FACE, 5-SECTION, BRACKET MOUNTED	EACH	4
SIGNAL HEAD, POLYCARBONATE, LED, 1-FACE, 5-SECTION, MAST ARM MOUNTED	EACH	4
PEDESTRIAN SIGNAL HEAD, POLYCARBONATE, LED, 1-FACE, BRACKET MOUNTED	EACH	8
TRAFFIC SIGNAL BACKPLATE, LOUVERED, FORMED PLASTIC	EACH	14
INDUCTIVE LOOP DETECTOR	EACH	10
LIGHT DETECTOR	EACH	4
LIGHT DETECTOR AMPLIFIER	EACH	4
PEDESTRIAN PUSH-BUTTON	EACH	8
PORTLAND CEMENT CONCRETE SIDEWALK 100MM	SQ M	32.7
SIDEWALK REMOVAL	SQ M	32.7
SIGN PANEL - TYPE 1	SQ M	1.8
SIGN PANEL - TYPE 2	SQ M	3.8
CONDUIT IN TRENCH, 30MM DIA., PVC	METER	46.3
CONDUIT IN TRENCH, 50MM DIA., PVC	METER	98.5
CONDUIT IN TRENCH, 65MM DIA., PVC	METER	19.9
CONDUIT IN TRENCH, 100MM DIA., PVC	METER	3.8
CONDUIT PUSHED, 30MM DIA., PVC	METER	16
CONDUIT PUSHED, 50MM DIA., PVC	METER	48.1
CONDUIT PUSHED, 75MM DIA., PVC	METER	37.8
CONDUIT PUSHED, 100MM DIA., PVC	METER	32.2
ELECTRIC CABLE IN CONDUIT, 600V, (XLP-TYPE USE) 1/C NO. 10	METER	226.3
TRENCH AND BACKFILL FOR ELECTRICAL WORK	METER	129.3
ELECTRIC CABLE IN CONDUIT, SIGNAL NO. 14 2C	METER	343.4
ELECTRIC CABLE IN CONDUIT, SIGNAL NO. 14 3C	METER	360.4
ELECTRIC CABLE IN CONDUIT, SIGNAL NO. 14 5C	METER	335.3
ELECTRIC CABLE IN CONDUIT, SIGNAL NO. 14 7C	METER	412.5
ELECTRIC CABLE IN CONDUIT, LEAD-IN, NO. 14 1 PAIR	METER	494.9
ELECTRIC CABLE IN CONDUIT, SERVICE, NO. 6 2C	METER	18
TRAFFIC SIGNAL POST, GALVANIZED STEEL 4.85 METER	EACH	2
CONCRETE FOUNDATION, TYPE A	METER	2.7
CONCRETE FOUNDATION, TYPE C	METER	0.9
DETECTOR LOOP, TYPE 1	METER	381.8
ELECTRIC CABLE IN CONDUIT-GROUNDING NO. 6 1C	METER	119.7
ELECTRIC CABLE IN CONDUIT NO. 20 3/C, TWISTED, SHIELDED	METER	232.9
CONCRETE FOUNDATION, TYPE E 900MM DIAMETER	METER	7.2
OPTIMIZE TRAFFIC SIGNAL SYSTEM	EACH	1
SERVICE INSTALLATION, GROUND MOUNTED	EACH	1
UNINTERRUPTIBLE POWER SUPPLY	EACH	1
STEEL COMBINATION MAST ARM ASSEMBLY AND POLE WITH DUAL MAST ARMS, 14.02 METER AND 13.41 METER	EACH	1
STEEL COMBINATION MAST ARM ASSEMBLY AND POLE WITH DUAL MAST ARMS, 14.02 METER AND 14.63 METER	EACH	1

LEGEND

- SERVICE INSTALLATION, SPECIAL
- ▣ CONTROLLER AND TYPE IV CABINET
- CONDUIT
- ➔ SIGNAL HEAD WITH BACKPLATE
- ➔ COMBINATION STEEL MAST ARM WITH POST AND LUMINAIRE
- TRAFFIC SIGNAL POST
- ▣ CONCRETE HANDHOLE
- ▣ CONCRETE DOUBLE HANDHOLE
- ▭ DETECTOR LOOP
- PEDESTRIAN SIGNAL HEAD
- PEDESTRIAN PUSH BUTTON
- ⦿ LIGHT DETECTOR
- ➔ CONFIRMATION BEACON

REVISIONS	
ARR	1/07

ILLINOIS DEPARTMENT OF TRANSPORTATION
 TRAFFIC SIGNAL PLAN
 FAP 591 (US 34) AND WEST STREET
 SECTION (15R) TS-1 & I
 KENDALL COUNTY

DRAWN BY ARR
 CHECKED BY JLS
 DATE 11/06