

F.A.P. RTE.	SECTION	COUNTY	TOTAL SHEETS	SHEET NO.
591	(15R)TS-1 & I	KENDALL	12	1

STATE OF ILLINOIS  
DEPARTMENT OF TRANSPORTATION  
DIVISION OF HIGHWAYS

**PROPOSED  
HIGHWAY PLANS**

FAP ROUTE 591 (US 34)  
SECTION (15R)TS-1 & I  
KENDALL COUNTY  
C-93-096-06

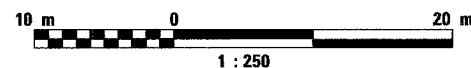
**INDEX OF SHEETS**

1. COVER SHEET
- 2.-10. TRAFFIC SIGNAL PLANS
11. H.M.A. REMOVAL AND REPLACEMENT PLAN
12. PAVEMENT MARKING PLAN

**HIGHWAY STANDARDS**

- 000001-04 ABBREVIATIONS, SYMBOLS AND PATTERNS
- 424001-04 CURB RAMP FOR SIDEWALKS
- 701601-04 URBAN LANE CLOSURE, MULTILANE, 1W OR 2W WITH NONTRAVERSABLE MEDIAN
- 701602-02 URBAN LANE CLOSURE, MULTILANE, 2W WITH BIDIRECTIONAL LEFT TURN LANE
- 701801-03 LANE CLOSURE MULTILANE 1W OR 2W CROSSWALK OR SIDEWALK CLOSURE
- 702001-06 TRAFFIC CONTROL DEVICES
- 720016-01 MAST ARM MOUNTED STREET NAME SIGNS
- 780001-01 TYPICAL PAVEMENT MARKINGS
- 781001-02 TYPICAL APPLICATIONS RAISED REFLECTIVE PAVEMENT MARKERS
- 805001 ELECTRICAL SERVICE INSTALLATION DETAILS
- 814001-01 HANDHOLES
- 814006-01 DOUBLE HANDHOLES
- 857001 STANDARD PHASE DESIGNATION DIAGRAMS AND PHASE SEQUENCES
- 862001 UNINTERRUPTABLE POWER SUPPLY (UPS)
- 873001-01 TRAFFIC SIGNAL GROUNDING & BONDING
- 876001 PEDESTRIAN PUSH BUTTON POST
- 877006-02 STEEL MAST ARM ASSEMBLY AND POLE WITH DUAL MAST ARMS
- 878001-05 CONCRETE FOUNDATION DETAILS
- 880006 TRAFFIC SIGNAL MOUNTING DETAILS
- 886001 DETECTOR LOOP INSTALLATIONS
- 886006 TYPICAL LAYOUT FOR DETECTION LOOPS

**METRIC RATIOS**



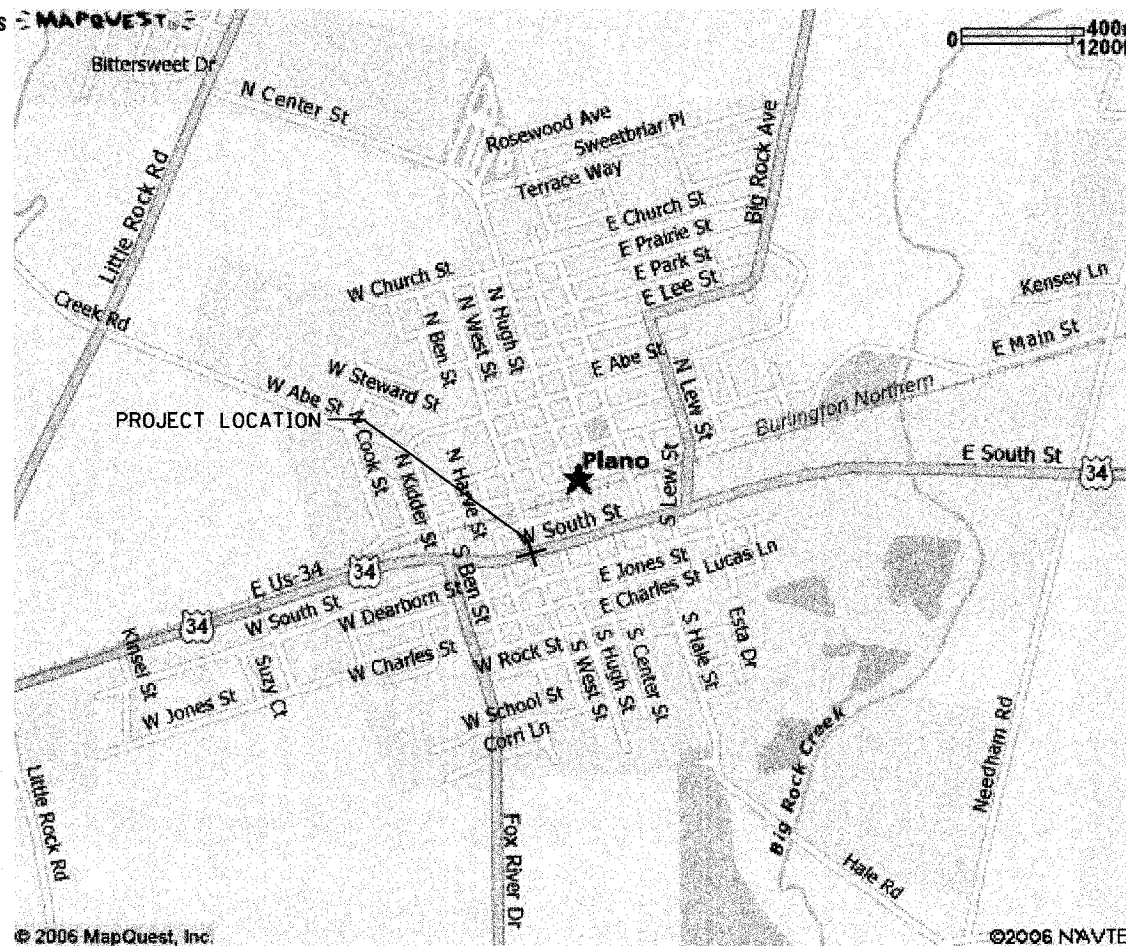
FULL SIZE PLANS HAVE BEEN PREPARED USING STANDARD ENGINEERING SCALES. REDUCED SIZED PLANS WILL NOT CONFORM TO STANDARD SCALES. IN MAKING MEASUREMENTS ON REDUCED PLANS, THE ABOVE SCALES MAY BE USED.

J.U.L.I.E.  
JOINT UTILITY LOCATION INFORMATION FOR EXCAVATION  
1-800-892-0123

DISTRICT 3 NO. (815) 434-6131

PROJECT ENGINEER: DAVE BROVIAK  
UNIT CHIEF: BRAD DUNCAN  
TOWNSHIP: LITTLE ROCK

CONTRACT NO. 66680



LOCATION MAP



OTHER PRINCIPAL ARTERIAL  
2006 ADT 16,200  
PV = 94.9% SU = 2.6% MU = 2.5%

2-1-2007  
date  
JORGE L. SANCHEZ  
LICENSED PROFESSIONAL ENGINEER  
NO. 062-055412  
STATE OF ILLINOIS  
expires 11-30-2007

signature  
PROFESSIONAL DESIGN FIRM  
LICENSE NO. 184-001717

STATE OF ILLINOIS  
DEPARTMENT OF TRANSPORTATION  
DIVISION OF HIGHWAYS  
SUBMITTED February 8 2007  
DATE  
Dee O'Leary  
DEPUTY DIRECTOR OF HIGHWAYS, REGION ENGINEER  
March 23, 2007  
Eric E. Harrell  
ENGINEER OF DESIGN AND ENVIRONMENT  
March 23, 2007  
Milton R. Sewell, P.E.  
DIRECTOR OF HIGHWAYS, CHIEF ENGINEER

**PRINTED BY THE AUTHORITY  
OF THE STATE OF ILLINOIS**

JORGE SANCHEZ  
CHAMLIN & ASSOCIATES  
(815) 228-3344

CHAMLIN & ASSOCIATES  
PERU ILLINOIS MORRIS

F.A.P. RTE.	SECTION	COUNTY	TOTAL SHEETS	SHEET NO.
*	**	KENDALL	12	2
STA.		TO STA.		
FED. ROAD DIST. NO. _		ILLINOIS FED. AID PROJECT		

- FAP ROUTE 591 (US 34)
- SECTION (15R) TS-1 & I

**GENERAL NOTES**

1. THE CONTRACTOR SHALL VERIFY THE EXACT LOCATION OF ALL UNDERGROUND UTILITIES PRIOR TO BEGINNING CONSTRUCTION (JUL.I.E. 800/892-0123). CONTACT IDOT FOR HIGHWAY LIGHTING LOCATE.
2. ALL TRAFFIC SIGNAL HEADS SHALL BE 300MM POLYCARBONATE, UNLESS OTHERWISE NOTED.
3. ALL SIGNAL BASES SHALL BE LOCATED AT 1.8M MINIMUM CLEARANCE FROM CURB UNLESS OTHERWISE DIRECTED BY ENGINEER.
4. ALL CONDUIT IN TRENCH SHALL BE P.V.C. ALL CONDUIT PUSHED MAY BE GALVANIZED STEEL OR P.V.C. CONDUIT ATTACHED TO STRUCTURES SHALL BE GALVANIZED STEEL.
5. A 6MM DIAMETER CONTINUOUS NYLON ROPE SHALL BE FURNISHED AND LEFT IN PLACE IN ALL CONDUITS BETWEEN HANDHOLES AND FOUNDATIONS OR CONTROLLER AS INCIDENTAL TO THE RESPECTIVE CONDUIT PAY ITEM.
6. THE PROPOSED TRAFFIC SIGNAL CONTROL CABINET SHALL BE FURNISHED WITH A MANUAL CONTROL SWITCH AND MANUAL CONTROL CORD WITHIN THE POLICE DOOR COMPARTMENT AS INCIDENTAL TO THE CONTROL CABINET PAY ITEM.
7. THE CONTRACTOR SHALL ARRANGE FOR A FACTORY OR SUPPLIER REPRESENTATIVE TO BE PRESENT AT THE INTERSECTION WHEN THE SIGNAL IS TURNED ON, INCIDENTAL TO THE CONTROLLER PAY ITEM.
8. THE DEPARTMENT OF TRANSPORTATION (815-434-8505) SHALL BE NOTIFIED AT LEAST 72 HOURS PRIOR TO THE TURNING ON OF THE CONTROLLER UNIT.
9. THE CONTRACTOR SHALL BE RESPONSIBLE FOR OBTAINING ELECTRICAL SERVICE FOR THE TRAFFIC SIGNAL AND STREET LIGHTING. THE CONTRACTOR SHALL CONTACT THE UTILITY COMPANY PRIOR TO BEGINNING WORK TO OBTAIN THE UTILITY COMPANY REQUIREMENTS FOR THE SERVICE INSTALLATION.
10. NO ADDITIONAL COMPENSATION WILL BE ALLOWED FOR PLACING CONDUIT AT GREATER THAN 600MM MINIMUM DEPTH TO AVOID OBSTACLES SUCH AS UNDERGROUND UTILITIES.
11. ALL MAST ARM SIGNAL HEADS ON AN INDIVIDUAL MAST ARM SHALL BE MOUNTED SO THAT THE "RED" INDICATIONS ARE LEVEL WITH EACH OTHER.
12. THE ELECTRICAL CONDUCTORS FOR ALL TRAFFIC SIGNAL HEADS SHALL BE SOLID, SOFT COPPER.
13. THE CONTRACTOR IS RESPONSIBLE FOR THE COST OF UNCOVERING OR HAND DIGGING AROUND UTILITIES, AS NECESSARY, INCIDENTAL TO THE CONDUIT PAY ITEM.
14. ALL THREADS OF BOLTS USED IN TRAFFIC COMPONENT ASSEMBLIES SHALL BE COATED WITH A NON-LEAD BASED ANTI-SEIZE COMPOUND, SIMILAR TO LEAD PLATE, PRIOR TO ASSEMBLY.
15. THE CONTROLLER CABINET SHALL BE PLACED SO THAT A TECHNICIAN MAY SEE THE INTERSECTION OVER THE TOP OF THE CABINET WHILE WATCHING THE COMPONENTS IN THE CABINET.
16. BACK PLATES MUST BE POLYCARBONATE WITH A DEEP BACK FLANGE.
17. THE CONTRACTOR SHALL PROVIDE 900MM SLACK CABLE IN EACH TRAFFIC SIGNAL STRUCTURE: MAST ARM, POST, CONTROLLER. THE SLACK, WHICH IS IN ADDITION TO THE VERTICAL LENGTH OF CABLE DEFINED IN THE SPECIFICATIONS, SHALL BE PAID FOR AT THE CONTRACT UNIT PRICE FOR EACH CABLE.
18. AT ALL LOCATIONS WHERE DETECTOR LOOPS ARE TO BE INSTALLED OVER EXISTING DETECTOR LOOPS. THE CONTRACTOR SHALL BE REQUIRED TO MAKE TWO SEPARATE SAW CUTS THROUGH EACH EXISTING DETECTOR LOOP TO PREVENT THE POSSIBILITY OF THE EXISTING LOOP SHORTING TO CREATE A CLOSED CIRCUIT. THIS WORK SHALL BE INCIDENTAL TO THE DETECTOR LOOP PAY ITEM.
19. ALL GROUNDING MATERIALS FOR TRAFFIC SIGNAL CONCRETE FOUNDATIONS SHALL REFER TO SECTION 806 IN THE STANDARD SPECIFICATIONS FOR ROAD AND BRIDGE CONSTRUCTION ADOPTED JANUARY 1, 2007
20. ALL LED ARROW SECTIONS SHALL HAVE 3 ROWS.
21. THE CONTRACTOR SHALL PROVIDE A SELF-ADHERED PHASE DIAGRAM ON THE INSIDE OF THE CONTROLLER CABINET DOOR.
22. NEW SIDEWALK TO BE PLACED OR ADDED SHALL BE PLACED SO THAT THE SIDEWALK ABUTS ANY POLE CONTAINING A PEDESTRIAN PUSH BUTTON.
23. TRAFFIC SIGNAL HEADS SHALL BE PROPERLY COVERED PRIOR TO INTERSECTION TURN-ON OR AS DIRECTED BY THE ENGINEER. THIS COST SHALL BE INCLUDED WITH THE COST OF THE ASSOCIATED SIGNAL PAY ITEMS.
24. ALL HARDWARE SHALL BE TIGHTENED AND WELL SECURED. CABLES SHALL BE NEATLY WOUND IN HANDHOLES. CABLES SHALL BE NEATLY TRAINED IN THE CONTROLLER CABINET.
25. ALL NEW TRAFFIC AND PEDESTRIAN SIGNAL WIRING SHALL EXTEND FROM CONTROLLER TO SIGNAL. SPLICES IN JUNCTION BOXES WILL NOT BE ALLOWED.
26. LIGHT DETECTORS AND CONFIRMATION BEACONS FOR EMERGENCY VEHICLE PREEMPTION SHALL BE MOUNTED ON MAST ARMS 1.2M FROM THE END.
27. ALL DETECTOR LOOP AMPLIFIERS SHALL BE CARD RACK MOUNTED AND FURNISHED WITH PLASTIC TAGS LABELED WITH RESPECTIVE PHASES AND DIRECTION AS LISTED IN THE DETECTOR LOOP CHART. MINIMUM TAG SIZE IS 6MM BY 18MM. TAGS SHALL BE MADE OF MATERIAL THAT DOES NOT ALLOW WRITING TO FADE OVER TIME.
28. THE LENGTH OF DETECTOR LOOP CABLE FROM THE CURB TO THE JUNCTION BOX OR HANDHOLE IS INCIDENTAL TO THE DETECTOR LOOP PAY ITEM.
29. DOUBLE FUSED FUSE HOLDERS AND SURGE ARRESTORS ARE TO BE SUPPLIED AND INSTALLED BY THE CONTRACTOR IN THE BASE OF THE COMBINATION MAST ARM AS INCIDENTAL TO THE LIGHT FIXTURE PAY ITEM.
30. A PULL OUT DRAWER SHALL BE REQUIRED IN THE CABINET IN ORDER TO REST THE CONTROLLER. THE PULL OUT DRAWER SHALL BE INCIDENTAL TO THE CONTROLLER AND CABINET PAY ITEM.
31. WIRING FOR CONFIRMATION BEACON (NO. 14 3/C) WILL NOT BE PAID FOR SEPARATELY, BUT SHALL BE CONSIDERED INCIDENTAL TO THE LIGHT DETECTORS PER ARTICLE 887.04 OF THE STANDARD SPECIFICATIONS.

32. MEMBERS OF JULIE KNOWN TO BE WITHIN THE LIMITS OF THE IMPROVEMENTS ARE:  
 UTILITY  
 COM ED  
 COMCAST  
 NICOR GAS

**MIXTURES TABLE**

	H.M.A. SURFACE
PG GRADE	PG 64-22
MAX % RAP ALLOWABLE **	10
DESIGN AIR VOIDS	4.0% @ N70
MIXTURE COMPOSITION	IL 12.5 OR IL 9.5
FRICTION AGGREGATE	MIXTURE D
DENSITY TEST METHOD	CORES/NUCLEAR

\*\* IF RAP OPTION IS SELECTED, THE ASPHALT CEMENT GRADE MAY NEED TO BE ADJUSTED, THIS WILL BE DETERMINED BY THE ENGINEER.

STATE OF ILLINOIS  
 DEPARTMENT OF TRANSPORTATION  
 DIVISION OF HIGHWAYS  
 DISTRICT THREE

REVIEWED BY: *Pat Powell*  
 DISTRICT STUDIES & PLANS ENGINEER

DATE: 2-8-07

EXAMINED BY: *Abdul Kadir*  
 DISTRICT CONSTRUCTION ENGINEER

*Maad*  
 DISTRICT MATERIALS ENGINEER

*James A. ...*  
 DISTRICT OPERATIONS ENGINEER

REVISIONS	
ARR	1/07

ILLINOIS DEPARTMENT OF TRANSPORTATION  
 TRAFFIC SIGNAL  
 GENERAL NOTES  
 FAP 591 (US 34)  
 SECTION (15R) TS-1 & I  
 KENDALL COUNTY  
 DRAWN BY ARR  
 DATE 11/06  
 CHECKED BY JLS

SUMMARY OF QUANTITIES

F.A.P. RTE.	SECTION	COUNTY	TOTAL SHEETS	SHEET NO.
*	**	KENDALL	12	3
STA.		TO STA.		
FED. ROAD DIST. NO.		ILLINOIS FED. AID PROJECT		

\* FAP ROUTE 591 (US 34)  
 \*\* SECTION (15R) TS-1 & I

ITEM NO.	DESCRIPTION	CONSTRUCTION CODE:		Y031-1F	Y031-3D	Y030-1E
		UNIT	TOTAL QUANTITY	100% STATE	100% CITY	100% CITY
			URBAN			
67100100	MOBILIZATION	L SUM	1	1	-	-
70102630	TRAFFIC CONTROL AND PROTECTION, STANDARD 701601	L SUM	1	1	-	-
70102632	TRAFFIC CONTROL AND PROTECTION, STANDARD 701602	L SUM	1	1	-	-
70102640	TRAFFIC CONTROL AND PROTECTION, STANDARD 701801	L SUM	1	1	-	-
70103815	TRAFFIC CONTROL SURVEILLANCE	CALDA	5	5	-	-
* 78100100	RAISED REFLECTIVE PAVEMENT MARKER	EACH	16	16	-	-
78300200	RAISED REFLECTIVE PAVEMENT MARKER REMOVAL	EACH	12	12	-	-
81400700	HANDHOLE, PORTLAND CEMENT CONCRETE	EACH	11	11	-	-
81400720	DOUBLE HANDHOLE, PORTLAND CEMENT CONCRETE	EACH	1	1	-	-
82103250	LUMINAIRE, SODIUM VAPOR, HORIZONTAL MOUNT, PHOTO-CELL CONTROL, 250 WATT	EACH	2	-	-	2
85700205	FULL-ACTUATED CONTROLLER AND TYPE IV CABINET, SPECIAL	EACH	1	1	-	-
86000100	MASTER CONTROLLER	EACH	1	1	-	-
86400100	TRANSCEIVER-FIBER OPTIC	EACH	3	3	-	-
87900200	DRILL EXISTING HANDHOLE	EACH	2	2	-	-
88040090	SIGNAL HEAD, POLYCARBONATE, LED, 1-FACE, 3-SECTION, MAST ARM MOUNTED	EACH	6	6	-	-
88040150	SIGNAL HEAD, POLYCARBONATE, LED, 1-FACE, 5-SECTION, BRACKET MOUNTED	EACH	4	4	-	-
88040160	SIGNAL HEAD, POLYCARBONATE, LED, 1-FACE, 5-SECTION, MAST ARM MOUNTED	EACH	4	4	-	-
88102810	PEDESTRIAN SIGNAL HEAD, POLYCARBONATE, LED, 1-FACE, BRACKET MOUNTED	EACH	8	8	-	-
88200410	TRAFFIC SIGNAL BACKPLATE, LOUVERED, FORMED PLASTIC	EACH	14	14	-	-
88500100	INDUCTIVE LOOP DETECTOR	EACH	10	10	-	-
88700200	LIGHT DETECTOR	EACH	4	-	4	-
88700300	LIGHT DETECTOR AMPLIFIER	EACH	4	-	4	-
88800100	PEDESTRIAN PUSH-BUTTON	EACH	8	8	-	-
89502200	MODIFY EXISTING CONTROLLER	EACH	2	2	-	-
M4063340	HOT-MIX ASPHALT SURFACE COURSE, MIX "D", N70	MTON	25.5	25.5	-	-
M4240100	PORTLAND CEMENT CONCRETE SIDEWALK 100MM	SO M	32.7	32.7	-	-
M4400740	HOT-MIX ASPHALT SURFACE REMOVAL, 40MM	SO M	265.6	265.6	-	-
M4402050	SIDEWALK REMOVAL	SO M	32.7	32.7	-	-
* M7200100	SIGN PANEL - TYPE 1	SO M	1.8	1.8	-	-
* M7200200	SIGN PANEL - TYPE 2	SO M	3.8	3.8	-	-
* M7800100	THERMOPLASTIC PAVEMENT MARKING - LETTERS AND SYMBOLS	SO M	4.9	4.9	-	-
* M7800105	THERMOPLASTIC PAVEMENT MARKING - LINE 100MM	METER	137.6	137.6	-	-
* M7800115	THERMOPLASTIC PAVEMENT MARKING - LINE 150MM	METER	89.1	89.1	-	-
* M7800120	THERMOPLASTIC PAVEMENT MARKING - LINE 200MM	METER	36.6	36.6	-	-
* M7800140	THERMOPLASTIC PAVEMENT MARKING - LINE 600MM	METER	24.2	24.2	-	-
M8100240	CONDUIT IN TRENCH, 30MM DIA., PVC	METER	46.3	46.3	-	-
M8100260	CONDUIT IN TRENCH, 50MM DIA., PVC	METER	179.2	179.2	-	-
M8100270	CONDUIT IN TRENCH, 65MM DIA., PVC	METER	19.9	19.9	-	-
M8100300	CONDUIT IN TRENCH, 100MM DIA., PVC	METER	3.8	3.8	-	-
M8101430	CONDUIT PUSHED, 30MM DIA., PVC	METER	16	16	-	-
M8101450	CONDUIT PUSHED, 50MM DIA., PVC	METER	293	293	-	-
M8101470	CONDUIT PUSHED, 75MM DIA., PVC	METER	37.8	37.8	-	-
M8101490	CONDUIT PUSHED, 100MM DIA., PVC	METER	32.2	32.2	-	-
M8170020	ELECTRIC CABLE IN CONDUIT, 600V, (XLP-TYPE USE) 1/C NO. 10	METER	226.3	-	-	226.3
M8190200	TRENCH AND BACKFILL FOR ELECTRICAL WORK	METER	210	210	-	-
M8731210	ELECTRIC CABLE IN CONDUIT, SIGNAL NO. 14 2C	METER	343.4	343.4	-	-
M8731220	ELECTRIC CABLE IN CONDUIT, SIGNAL NO. 14 3C	METER	360.4	360.4	-	-
M8731240	ELECTRIC CABLE IN CONDUIT, SIGNAL NO. 14 5C	METER	335.3	335.3	-	-
M8731250	ELECTRIC CABLE IN CONDUIT, SIGNAL NO. 14 7C	METER	412.5	412.5	-	-
M8731300	ELECTRIC CABLE IN CONDUIT, LEAD-IN, NO. 14 1 PAIR	METER	494.9	494.9	-	-
M8731800	ELECTRIC CABLE IN CONDUIT, SERVICE, NO. 6 2C	METER	18	18	-	-
M8750510	TRAFFIC SIGNAL POST, GALVANIZED STEEL 4.85 METER	EACH	2	2	-	-
M8780100	CONCRETE FOUNDATION, TYPE A	METER	2.7	2.7	-	-
M8780150	CONCRETE FOUNDATION, TYPE C	METER	0.9	0.9	-	-
M8860100	DETECTOR LOOP, TYPE 1	METER	381.8	381.8	-	-
MX032819	ELECTRIC CABLE IN CONDUIT, TRACER, NO. 14 1C	METER	851.7	851.7	-	-
MX032922	ELECTRIC CABLE IN CONDUIT-GROUNDING NO. 6 1C	METER	119.7	119.7	-	-
MX871055	FIBER OPTIC CABLE IN CONDUIT, NO. 62.5/125, MM12F SM12F	METER	851.7	851.7	-	-
MX873030	ELECTRIC CABLE IN CONDUIT NO. 20 3/C, TWISTED, SHIELDED	METER	232.9	-	232.9	-
MX878030	CONCRETE FOUNDATION, TYPE E 900MM DIAMETER	METER	7.2	7.2	-	-
X0324007	OPTIMIZE TRAFFIC SIGNAL SYSTEM	EACH	1	1	-	-
X8050010	SERVICE INSTALLATION, GROUND MOUNTED	EACH	1	1	-	-
XX006661	UNINTERRUPTABLE POWER SUPPLY	EACH	1	1	-	-
MX877036	STEEL COMBINATION MAST ARM ASSEMBLY AND POLE WITH DUAL MAST ARMS, 14.02 METER AND 13.41 METER	EACH	1	1	-	-
MX877035	STEEL COMBINATION MAST ARM ASSEMBLY AND POLE WITH DUAL MAST ARMS, 14.02 METER AND 14.63 METER	EACH	1	1	-	-

\*SPECIALTY ITEMS

REVISIONS	
ARR	1/07

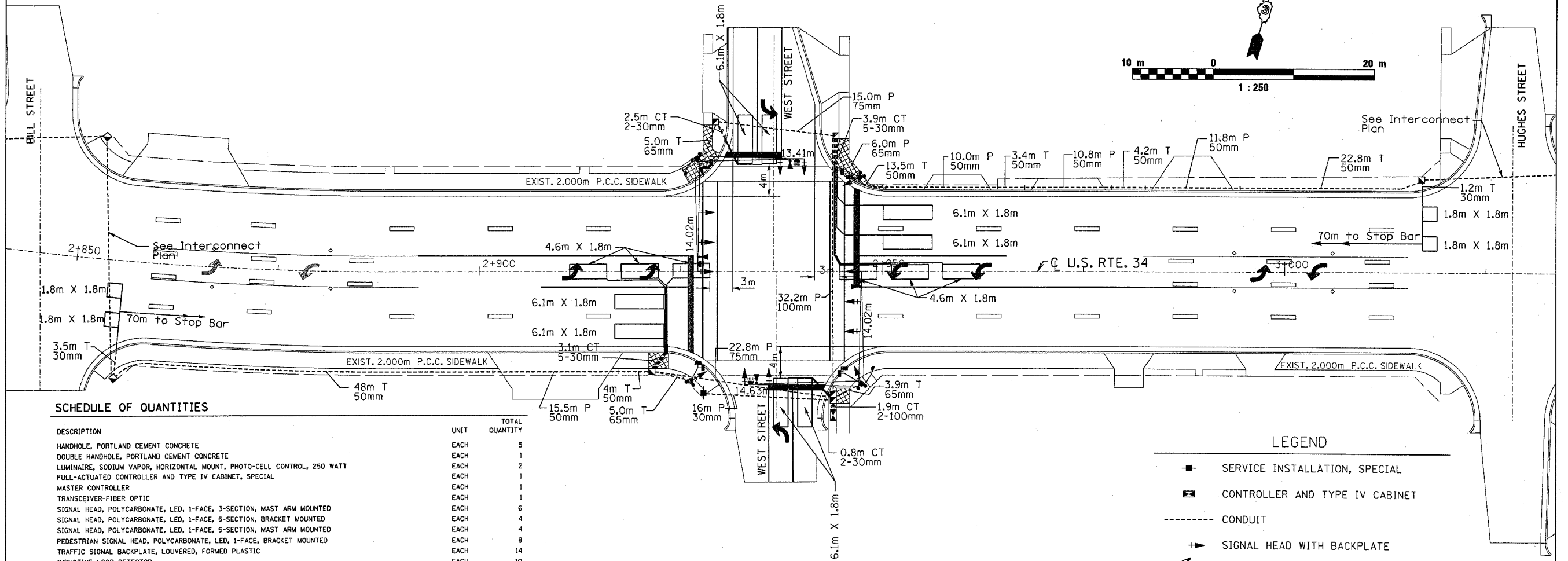
ILLINOIS DEPARTMENT OF TRANSPORTATION  
 TRAFFIC SIGNAL  
 SUMMARY OF QUANTITIES  
 FAP 591 (US 34)  
 SECTION (15R) TS-1 & I  
 KENDALL COUNTY  
 DRAWN BY ARR  
 DATE 11/06  
 CHECKED BY JLS

F.A.P. RTE.	SECTION	COUNTY	TOTAL SHEETS	SHEET NO.
*	**	KENDALL	12	4
STA.	TO STA.			
FED. ROAD DIST. NO.	ILLINOIS FED. AID PROJECT			

- FAP ROUTE 591 (US 34)
- SECTION (15R) TS-1 & I

**CONSTRUCTION NOTE:**

PEDESTRIAN SIGNAL HEADS SHALL BE INSTALLED TO ALIGN WITH CROSSWALKS IN ORDER TO ENSURE PEDESTRIAN VISIBILITY.



**SCHEDULE OF QUANTITIES**

DESCRIPTION	UNIT	TOTAL QUANTITY
HANDHOLE, PORTLAND CEMENT CONCRETE	EACH	5
DOUBLE HANDHOLE, PORTLAND CEMENT CONCRETE	EACH	1
LUMINAIRE, SODIUM VAPOR, HORIZONTAL MOUNT, PHOTO-CELL CONTROL, 250 WATT	EACH	2
FULL-ACTUATED CONTROLLER AND TYPE IV CABINET, SPECIAL	EACH	1
MASTER CONTROLLER	EACH	1
TRANSCIVER-FIBER OPTIC	EACH	1
SIGNAL HEAD, POLYCARBONATE, LED, 1-FACE, 3-SECTION, MAST ARM MOUNTED	EACH	6
SIGNAL HEAD, POLYCARBONATE, LED, 1-FACE, 5-SECTION, BRACKET MOUNTED	EACH	4
SIGNAL HEAD, POLYCARBONATE, LED, 1-FACE, 5-SECTION, MAST ARM MOUNTED	EACH	4
PEDESTRIAN SIGNAL HEAD, POLYCARBONATE, LED, 1-FACE, BRACKET MOUNTED	EACH	8
TRAFFIC SIGNAL BACKPLATE, LOUVERED, FORMED PLASTIC	EACH	14
INDUCTIVE LOOP DETECTOR	EACH	10
LIGHT DETECTOR	EACH	4
LIGHT DETECTOR AMPLIFIER	EACH	4
PEDESTRIAN PUSH-BUTTON	EACH	8
PORTLAND CEMENT CONCRETE SIDEWALK 100MM	SQ M	32.7
SIDEWALK REMOVAL	SQ M	32.7
SIGN PANEL - TYPE 1	SQ M	1.8
SIGN PANEL - TYPE 2	SQ M	3.8
CONDUIT IN TRENCH, 30MM DIA., PVC	METER	46.3
CONDUIT IN TRENCH, 50MM DIA., PVC	METER	98.5
CONDUIT IN TRENCH, 65MM DIA., PVC	METER	19.9
CONDUIT IN TRENCH, 100MM DIA., PVC	METER	3.8
CONDUIT PUSHED, 30MM DIA., PVC	METER	16
CONDUIT PUSHED, 50MM DIA., PVC	METER	48.1
CONDUIT PUSHED, 75MM DIA., PVC	METER	37.8
CONDUIT PUSHED, 100MM DIA., PVC	METER	32.2
ELECTRIC CABLE IN CONDUIT, 600V, (XLP-TYPE USE) 1/C NO. 10	METER	226.3
TRENCH AND BACKFILL FOR ELECTRICAL WORK	METER	129.3
ELECTRIC CABLE IN CONDUIT, SIGNAL NO. 14 2C	METER	343.4
ELECTRIC CABLE IN CONDUIT, SIGNAL NO. 14 3C	METER	360.4
ELECTRIC CABLE IN CONDUIT, SIGNAL NO. 14 5C	METER	335.3
ELECTRIC CABLE IN CONDUIT, SIGNAL NO. 14 7C	METER	412.5
ELECTRIC CABLE IN CONDUIT, LEAD-IN, NO. 14 1 PAIR	METER	494.9
ELECTRIC CABLE IN CONDUIT, SERVICE, NO. 6 2C	METER	18
TRAFFIC SIGNAL POST, GALVANIZED STEEL 4.85 METER	EACH	2
CONCRETE FOUNDATION, TYPE A	METER	2.7
CONCRETE FOUNDATION, TYPE C	METER	0.9
DETECTOR LOOP, TYPE 1	METER	381.8
ELECTRIC CABLE IN CONDUIT-GROUNDING NO. 6 1C	METER	119.7
ELECTRIC CABLE IN CONDUIT NO. 20 3/C, TWISTED, SHIELDED	METER	232.9
CONCRETE FOUNDATION, TYPE E 900MM DIAMETER	METER	7.2
OPTIMIZE TRAFFIC SIGNAL SYSTEM	EACH	1
SERVICE INSTALLATION, GROUND MOUNTED	EACH	1
UNINTERRUPTIBLE POWER SUPPLY	EACH	1
STEEL COMBINATION MAST ARM ASSEMBLY AND POLE WITH DUAL MAST ARMS, 14.02 METER AND 13.41 METER	EACH	1
STEEL COMBINATION MAST ARM ASSEMBLY AND POLE WITH DUAL MAST ARMS, 14.02 METER AND 14.63 METER	EACH	1

**LEGEND**

- SERVICE INSTALLATION, SPECIAL
- ▣ CONTROLLER AND TYPE IV CABINET
- CONDUIT
- ➔ SIGNAL HEAD WITH BACKPLATE
- ➔ COMBINATION STEEL MAST ARM WITH POST AND LUMINAIRE
- TRAFFIC SIGNAL POST
- ▣ CONCRETE HANDHOLE
- ▣ CONCRETE DOUBLE HANDHOLE
- ▭ DETECTOR LOOP
- PEDESTRIAN SIGNAL HEAD
- PEDESTRIAN PUSH BUTTON
- ⦿ LIGHT DETECTOR
- ➔ CONFIRMATION BEACON

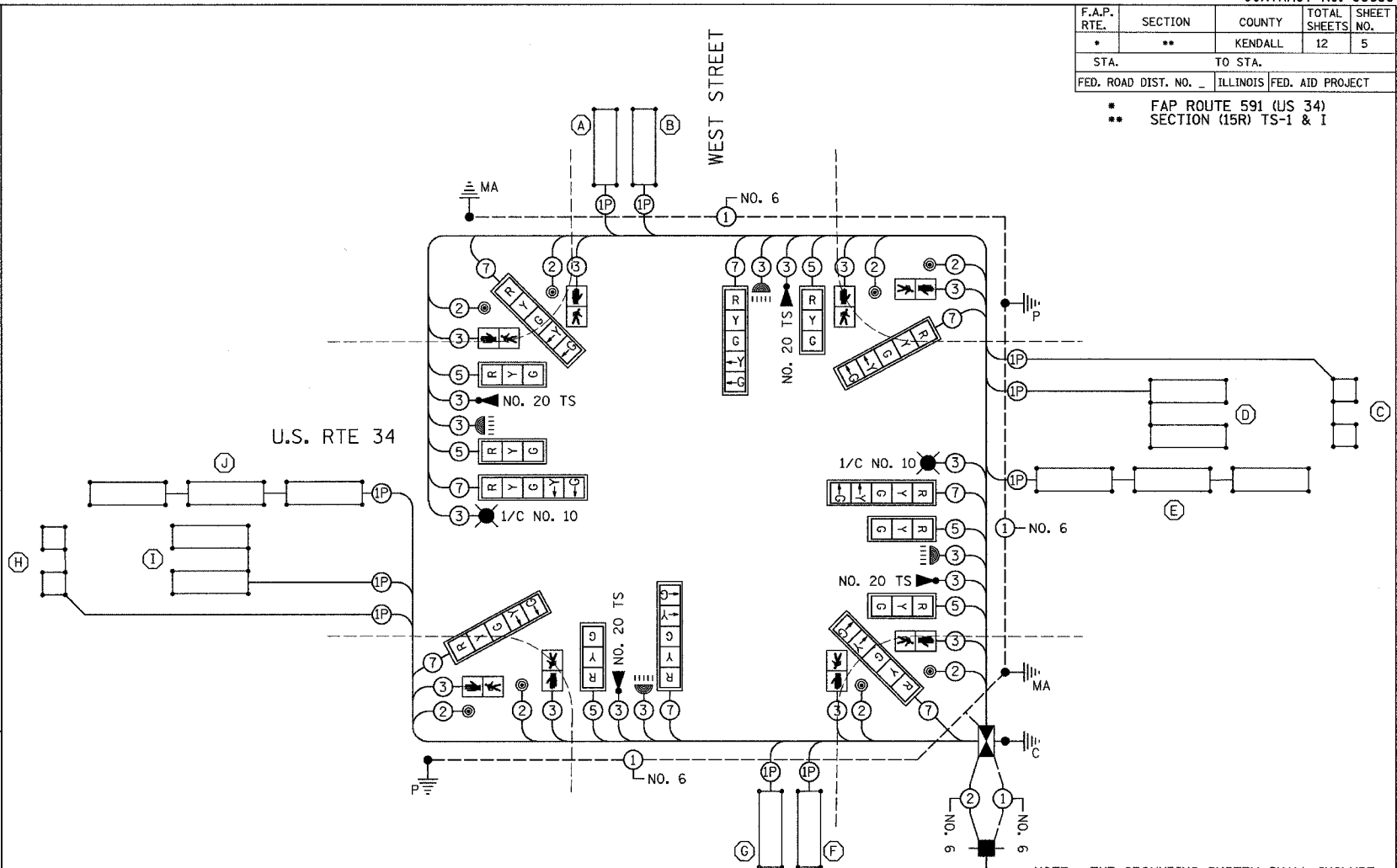
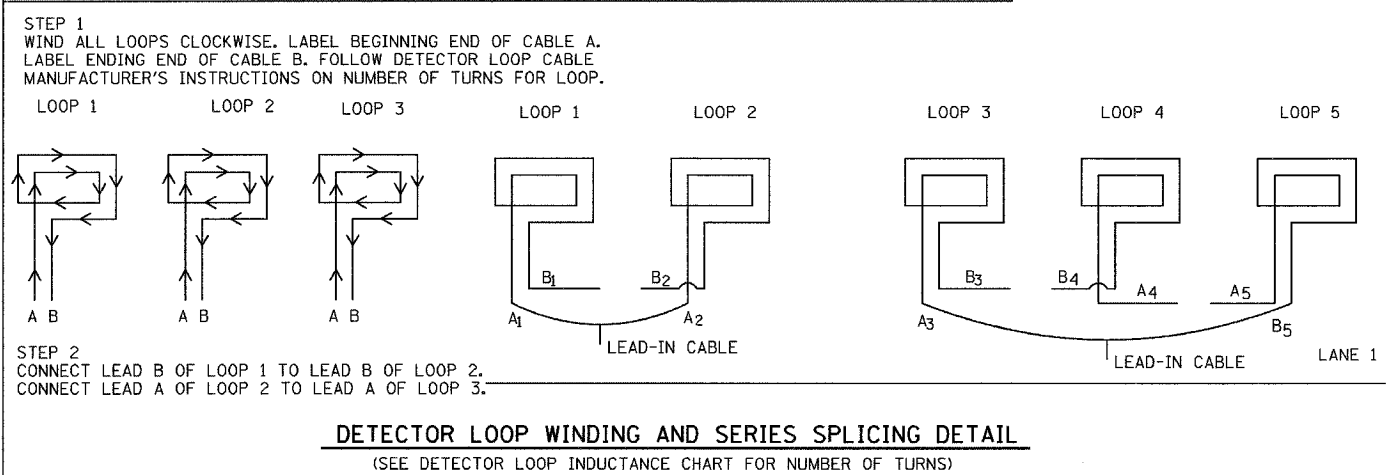
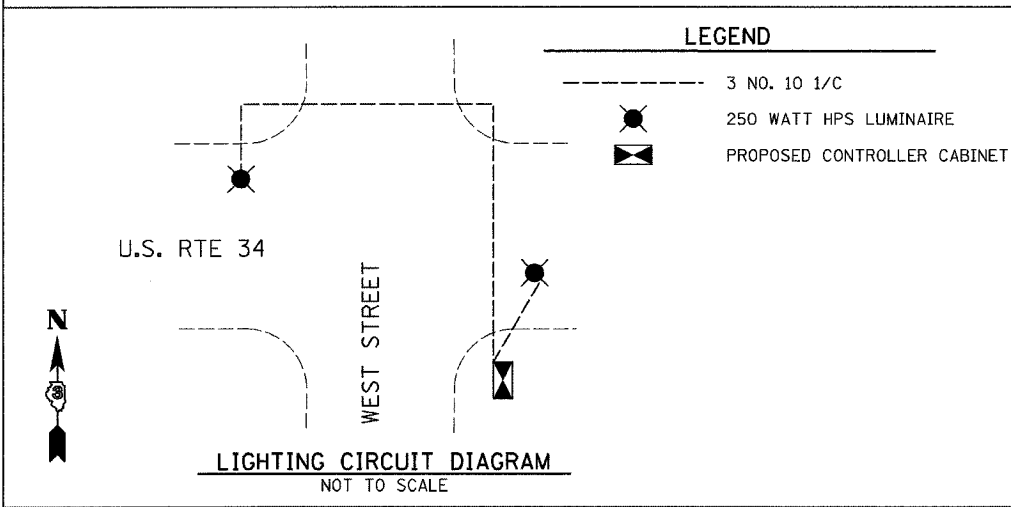
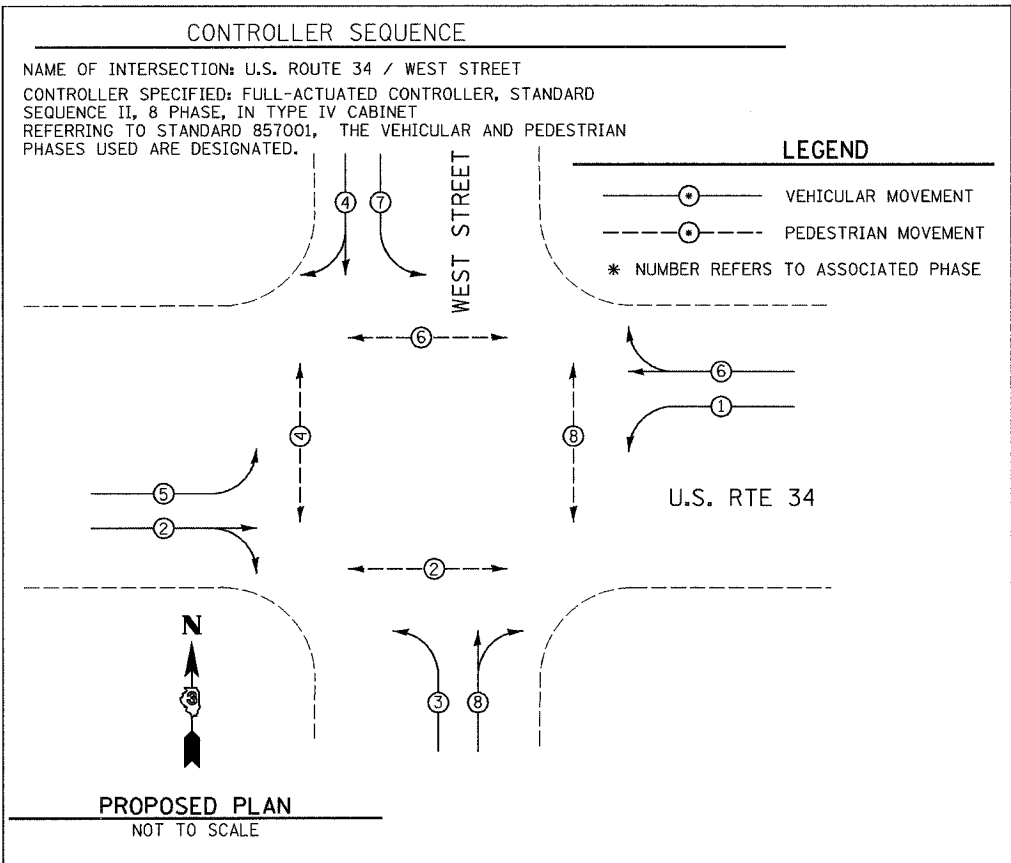
REVISIONS	
ARR	1/07

ILLINOIS DEPARTMENT OF TRANSPORTATION  
 TRAFFIC SIGNAL PLAN  
 FAP 591 (US 34) AND WEST STREET  
 SECTION (15R) TS-1 & I  
 KENDALL COUNTY

DRAWN BY ARR  
 CHECKED BY JLS  
 DATE 11/06

F.A.P. RTE.	SECTION	COUNTY	TOTAL SHEETS	SHEET NO.
*	**	KENDALL	12	5
STA.		TO STA.		
FED. ROAD DIST. NO. -		ILLINOIS FED. AID PROJECT		

\* FAP ROUTE 591 (US 34)  
 \*\* SECTION (15R) TS-1 & I



- TRAFFIC SIGNALS LEGEND**
- DETNOTES NUMBER OF CONDUCTORS (NEW)  
ALL CABLE NO. 14 EXCEPT AS INDICATED
  - ⊙ DETNOTES NUMBER OF PAIR OF WIRE (NEW)  
ALL LOOP DETECTOR CABLE TO BE TWISTED,  
SHIELDED ALL CABLE NO. 14 EXCEPT AS  
INDICATED
  - ⊙ DENOTES DETECTOR LOOP SYSTEM
  - PROPOSED CONTROLLER CABINET
  - PROPOSED SERVICE INSTALLATION
  - ⊖ LEFT TURN YELLOW
  - ⊖ LEFT TURN GREEN
  - 300mm SIGNAL SECTION
  - ⊙ PEDESTRIAN PUSH BUTTON
  - ⊙ PEDESTRIAN SIGNAL HEAD
  - ⊙ EMERGENCY VEHICLE CONFIRMATION BEACON
  - ⊙ EMERGENCY VEHICLE LIGHT DETECTOR
  - ⊙ VEHICLE DETECTOR, INDUCTION LOOP
  - TRAFFIC SIGNAL BACKPLATE
  - ⊙ GROUND ROD AT POST (P), MAST ARM (MA),  
SERVICE INSTALLATION (S), AND CONTROLLER (C)
  - 250 WATT HPS LUMINAIRE

NOTE: THE GROUNDING SYSTEM SHALL INCLUDE GROUND RODS AND CONNECTIONS IN HANDHOLES. ALL GROUND ROD CONNECTIONS SHALL BE AN IRREVERSIBLE COMPRESSION GROUND TAP INSTALLED WITH A HYDRAULIC 12 TON PRESS TOOL OR EQUAL. GROUND RODS SHALL BE 19mm X 3m LONG COPPER CLAD.

REVISIONS	
ARR	1/07

ILLINOIS DEPARTMENT OF TRANSPORTATION  
 TRAFFIC SIGNAL CABLE PLAN  
 FAP 591 (US 34) AND WEST STREET  
 SECTION (15R) TS-1 & I  
 KENDALL COUNTY  
 DRAWN BY ARR  
 CHECKED BY JLS  
 DATE 11/06

F.A.P. RTE.	SECTION	COUNTY	TOTAL SHEETS	SHEET NO.
*	**	KENDALL	12	6
STA.		TO STA.		
FED. ROAD DIST. NO.		ILLINOIS FED. AID PROJECT		

FAP ROUTE 591 (US 34)  
 \*\* SECTION (15R) TS-1 & I

### DETECTOR LOOP INDUCTANCE CHART

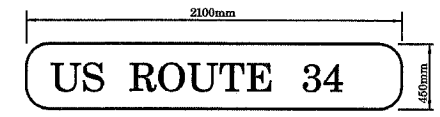
DETECTOR LOOP SYSTEM	Ø	LOCATION	TURNS PER LOOP	INDUCTANCE READING (MICROHENRIES)	FREQUENCY (HERTZ)	J PIN STATUS
A	4	SB STBR	4	299	35,287	ON
B	7	SB LT	4	301	35,158	ON
C	6	WB FAR	5	442	29,036	ON
D	6	WB STBR	4	556	25,892	OFF
E	1	WB LT	4	816	21,362	ON
F	8	NB STBR	4	264	37,597	ON
G	3	NB LT	4	266	37,441	ON
H	2	EB FAR	5	430	29,419	ON
I	2	EB STBR	4	541	26,242	OFF
J	5	EB LT	4	807	21,484	ON

J PIN STATUS: "ON" MEANS STANDARD DETECTOR SETUP. "OFF" MEANS J WIRE HAS BEEN DISCONNECTED, BUT INTACT, AT THE HARNESS PANEL WITH THE NECESSARY SPADE CONNECTION ATTACHED, MARKED, AND INSULATED.

### ELECTRICAL LOAD FOR INTERSECTION

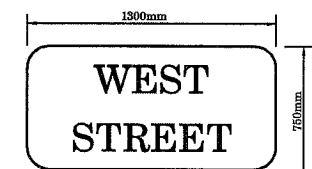
STREET NAME	COMPONENT	NUMBER	WATTAGE EACH	BURNTIME %
US ROUTE 34	RED	8	10	54
	YELLOW	8	19	4
	GREEN	8	14	42
	YELLOW ARROW LT.	4	9	5
	GREEN ARROW LT.	4	3.4	21
	↓	4	7	42
	↑	4	5	58
WEST STREET	RED	6	10	70
	YELLOW	6	19	4
	GREEN	6	14	26
	YELLOW ARROW LT.	4	9	4
	GREEN ARROW LT.	4	3.4	16
TRAFFIC SIGNAL CABINET	CONTROLLER	1	6	100
	VEHICLE DETECTORS	11	4	100
	UPS	1	50	100
HIGHWAY LIGHTING	LUMINAIRE HPS	2	250	50

AGENCY RESPONSIBLE FOR ENERGY CHARGES: UNITED CITY OF PLANO  
 (NOTE: SEPERATE ENERGY BILLS FOR HIGHWAY LIGHTING AND TRAFFIC SIGNALS SHALL BE SUBMITTED TO THE UNITED CITY OF PLANO.)  
 7 NORTH JAMES STREET  
 PLANO, ILLINOIS 60545  
 708-552-8275



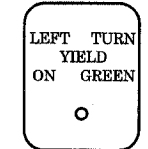
TYPE A SHEETING REQUIRED  
 200mm D SERIES LETTERS  
 2 SIGNS REQUIRED = 0.945 SQ. M. EACH  
 = 1.89 SQ. M. TOTAL

THIS STREET NAME SIGN SHALL BE PLACED ON THE MAST ARMS PARALLEL WITH US RTE 34



TYPE A SHEETING REQUIRED  
 200mm D SERIES LETTERS  
 2 SIGNS REQUIRED = 0.975 SQ. M. EACH  
 = 1.95 SQ. M. TOTAL

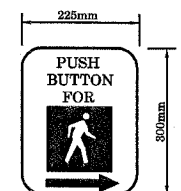
THIS STREET NAME SIGN SHALL BE PLACED ON THE MAST ARMS PARALLEL WITH WEST STREET



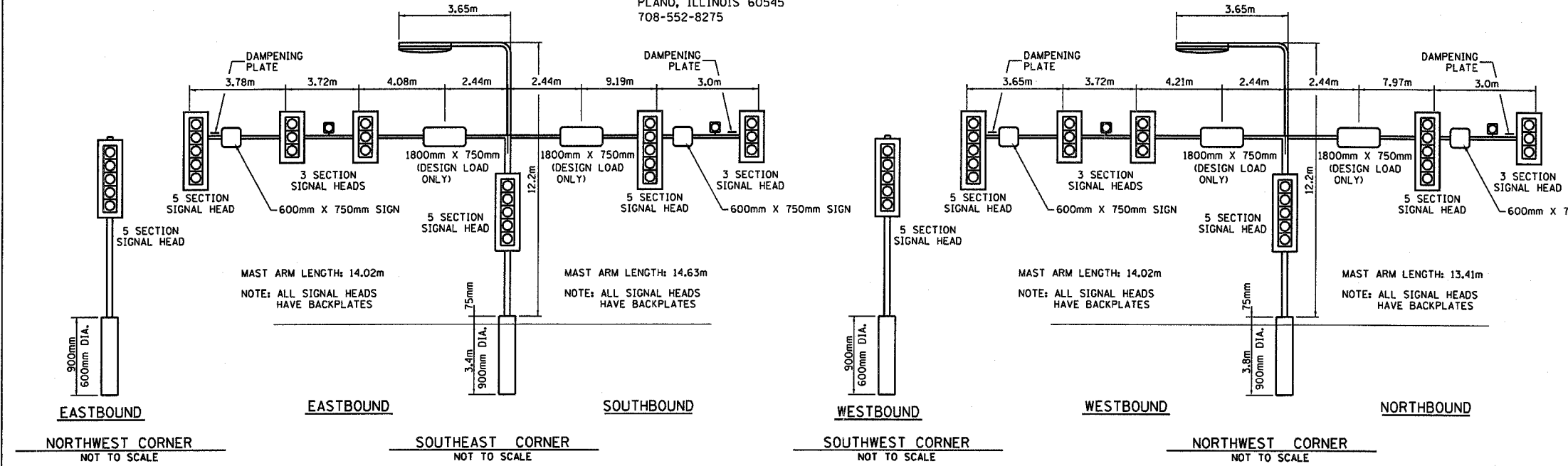
R10 - 12  
 600mm X 750mm

TYPE A SHEETING REQUIRED  
 4 SIGNS REQUIRED = 0.45 SQ. M. EACH  
 = 1.8 SQ. M. TOTAL

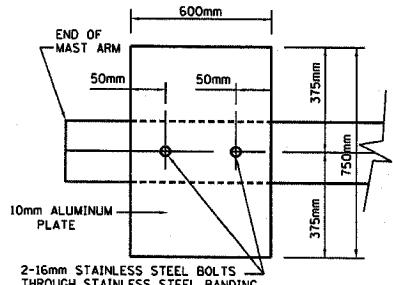
THIS SIGN SHALL BE LOCATED 150mm TO 300mm TO THE RIGHT OF EACH 5 SECTION MAST ARM MOUNTED LEFT TURN SIGNAL AND DIRECTLY BELOW AND PARALLEL TO THE BACKPLATE OF EACH POST BRACKETED 5 SECTION LEFT TURN SIGNAL FOR THE NORTHBOUND AND SOUTHBOUND APPROACHES.



THE CONTRACTOR SHALL SUPPLY AND MOUNT ONE SIGN WITH EACH PEDESTRIAN PUSH-BUTTON AND THIS SHALL BE INCLUDED IN THE COST OF PEDESTRIAN PUSH-BUTTON PAY ITEM.



NOTE:  
 DAMPENING DEVICE SHALL CONSIST OF A 600mm X 750mm TYPE 1, UNPAINTED ALUMINUM SIGN STOCK MOUNTED HORIZONTALLY ON TOP OF MAST ARM WITH THE 750mm LENGTH PERPENDICULAR TO THE ARM. COST OF THE DAMPENING DEVICE IS INCLUDED IN THE MAST ARM PAY ITEM.



NOTE:  
 MOUNT DAMPENING PLATE TO END OF EACH TRAFFIC SIGNAL MAST ARM.

DAMPENING PLATE DETAIL - TOP VIEW

REVISIONS	
ARR	1/07

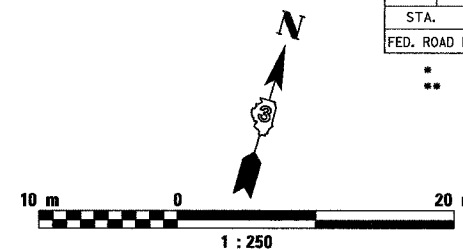
ILLINOIS DEPARTMENT OF TRANSPORTATION  
 TRAFFIC SIGNAL DETAILS  
 FAP 591 (US 34) AND WEST STREET  
 SECTION (15R) TS-1 & I  
 KENDALL COUNTY  
 DRAWN BY ARR  
 CHECKED BY JLS  
 DATE 11/06

F.A.P. RTE.	SECTION	COUNTY	TOTAL SHEETS	SHEET NO.
*	**	KENDALL	12	7
STA.		TO STA.		
FED. ROAD DIST. NO. ILLINOIS FED. AID PROJECT				

- \* FAP ROUTE 591 (US 34)
- \*\* SECTION (15R) TS-1 & I

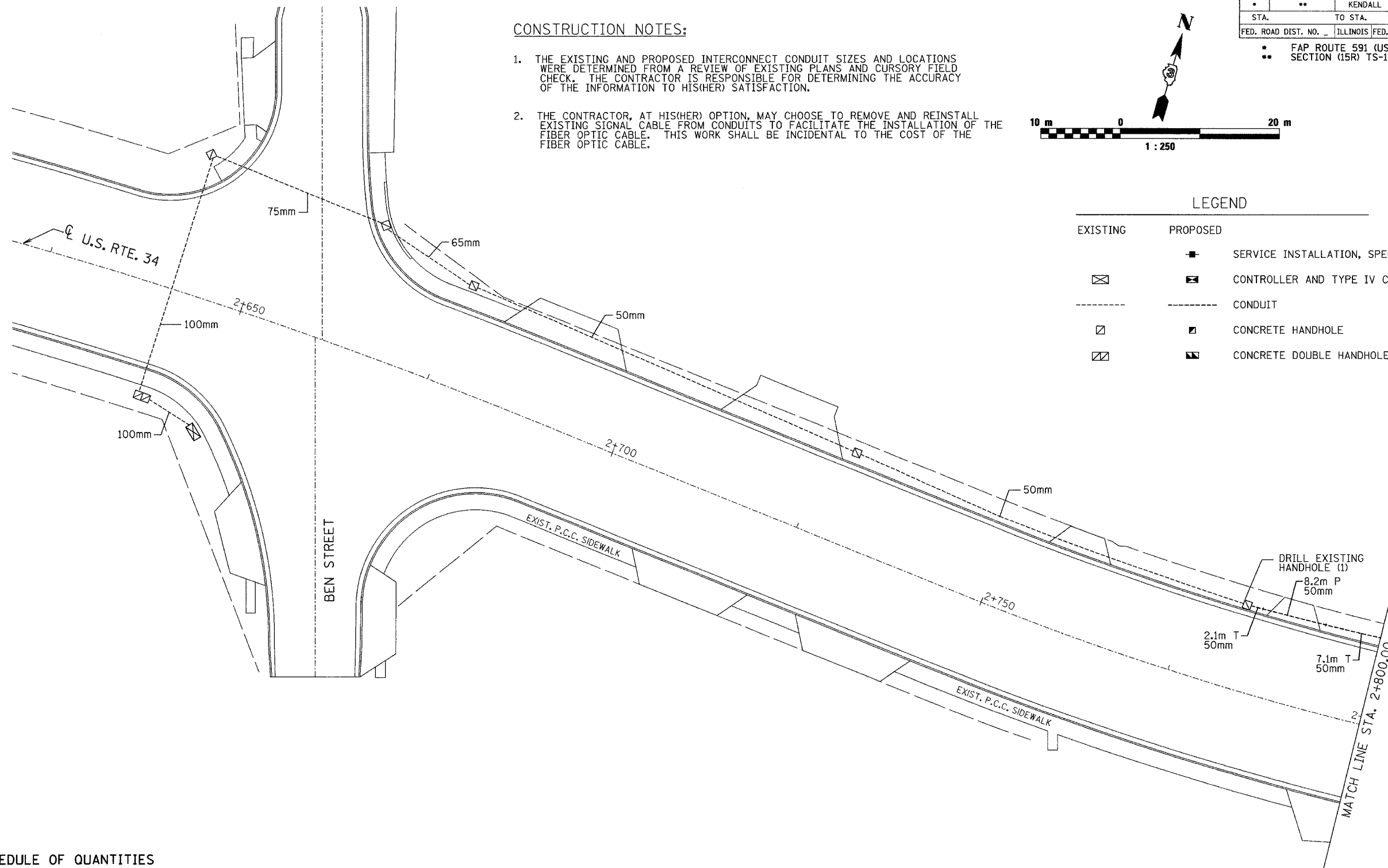
**CONSTRUCTION NOTES:**

1. THE EXISTING AND PROPOSED INTERCONNECT CONDUIT SIZES AND LOCATIONS WERE DETERMINED FROM A REVIEW OF EXISTING PLANS AND CURSORY FIELD CHECK. THE CONTRACTOR IS RESPONSIBLE FOR DETERMINING THE ACCURACY OF THE INFORMATION TO HIS(HER) SATISFACTION.
2. THE CONTRACTOR, AT HIS(HER) OPTION, MAY CHOOSE TO REMOVE AND REINSTALL EXISTING SIGNAL CABLE FROM CONDUITS TO FACILITATE THE INSTALLATION OF THE FIBER OPTIC CABLE. THIS WORK SHALL BE INCIDENTAL TO THE COST OF THE FIBER OPTIC CABLE.



**LEGEND**

EXISTING	PROPOSED	
☒	■	SERVICE INSTALLATION, SPECIAL
☒	☒	CONTROLLER AND TYPE IV CABINET
---	---	CONDUIT
☒	☒	CONCRETE HANDHOLE
☒	☒	CONCRETE DOUBLE HANDHOLE



**SCHEDULE OF QUANTITIES**

DESCRIPTION	UNIT	TOTAL QUANTITY
TRANSCEIVER-FIBER OPTIC	EACH	1
DRILL EXISTING HANDHOLE	EACH	1
MODIFY EXISTING CONTROLLER	EACH	1
CONDUIT IN TRENCH, 50MM DIA., PVC	METER	9.2
CONDUIT PUSHED, 50MM DIA., PVC	METER	8.2
TRENCH AND BACKFILL FOR ELECTRICAL WORK	METER	9.2
ELECTRIC CABLE IN CONDUIT, TRACER, NO. 14 1C	METER	209.3
FIBER OPTIC CABLE IN CONDUIT, NO. 62.5/125, MM12F SM12F	METER	209.3

REVISIONS	
ARR	1/07

ILLINOIS DEPARTMENT OF TRANSPORTATION  
 TRAFFIC SIGNAL INTERCONNECT PLAN  
 FAP 591 (US 34) AND WEST STREET  
 SECTION (15R) TS-1 & I  
 KENDALL COUNTY  
 DRAWN BY ARR  
 CHECKED BY JLS  
 DATE 11/06

F.A.P. RTE.	SECTION	COUNTY	TOTAL SHEETS	SHEET NO.
*	**	KENDALL	12	8
STA.		TO STA.		
FED. ROAD DIST. NO. _		ILLINOIS FED. AID PROJECT		

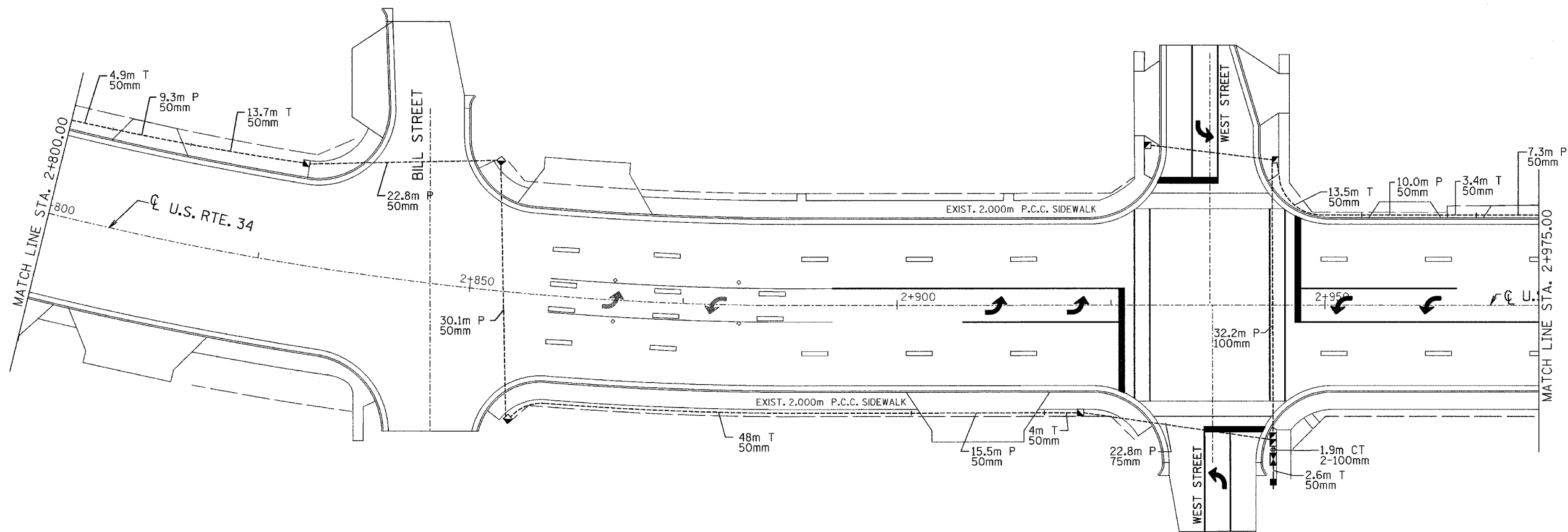
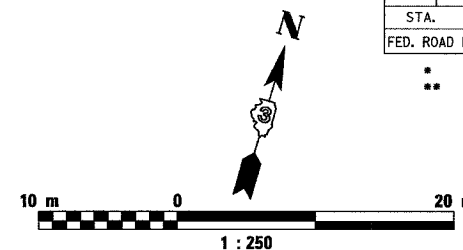
- FAP ROUTE 591 (US 34)
- SECTION (15R) TS-1 & I

**LEGEND**

EXISTING	PROPOSED	
☒	☒	SERVICE INSTALLATION, SPECIAL
☒	☒	CONTROLLER AND TYPE IV CABINET
---	---	CONDUIT
☒	☒	CONCRETE HANDHOLE
☒	☒	CONCRETE DOUBLE HANDHOLE

**CONSTRUCTION NOTES:**

1. THE EXISTING AND PROPOSED INTERCONNECT CONDUIT SIZES AND LOCATIONS WERE DETERMINED FROM A REVIEW OF EXISTING PLANS AND CURSORY FIELD CHECK. THE CONTRACTOR IS RESPONSIBLE FOR DETERMINING THE ACCURACY OF THE INFORMATION TO HIS(HER) SATISFACTION.
2. THE CONTRACTOR, AT HIS(HER) OPTION, MAY CHOOSE TO REMOVE AND REINSTALL EXISTING SIGNAL CABLE FROM CONDUITS TO FACILITATE THE INSTALLATION OF THE FIBER OPTIC CABLE. THIS WORK SHALL BE INCIDENTAL TO THE COST OF THE FIBER OPTIC CABLE.



**SCHEDULE OF QUANTITIES**

DESCRIPTION	UNIT	TOTAL QUANTITY
HANDHOLE, PORTLAND CEMENT CONCRETE	EACH	2
CONDUIT IN TRENCH, 50MM DIA., PVC	METER	18.6
CONDUIT PUSHED, 50MM DIA., PVC	METER	62.2
TRENCH AND BACKFILL FOR ELECTRICAL WORK	METER	18.6
ELECTRIC CABLE IN CONDUIT, TRACER, NO. 14 1C	METER	261
FIBER OPTIC CABLE IN CONDUIT, NO. 62.5/125, MM12F SM12F	METER	261

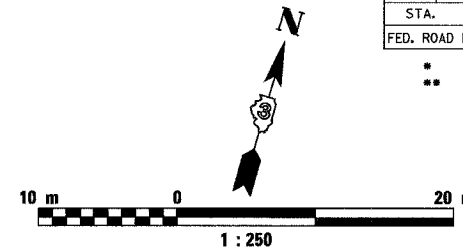
REVISIONS	
ARR	1/07

ILLINOIS DEPARTMENT OF TRANSPORTATION  
 TRAFFIC SIGNAL INTERCONNECT PLAN  
 FAP 591 (US 34) AND WEST STREET  
 SECTION (15R) TS-1 & I  
 KENDALL COUNTY  
 DRAWN BY ARR  
 CHECKED BY JLS  
 DATE 11/06



F.A.P. RTE.	SECTION	COUNTY	TOTAL SHEETS	SHEET NO.
*	**	KENDALL	12	9
STA.		TO STA.		
FED. ROAD DIST. NO. _		ILLINOIS FED. AID PROJECT		

- \* FAP ROUTE 591 (US 34)
- \*\* SECTION (15R) TS-1 & I

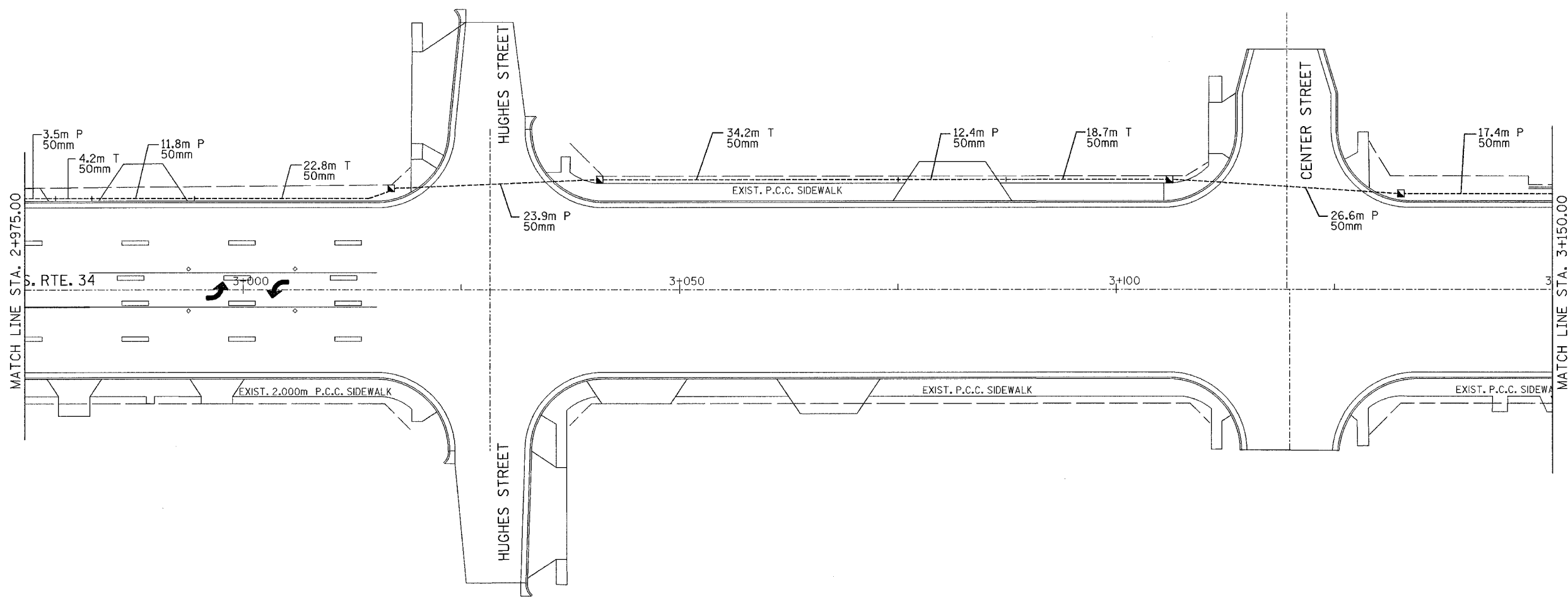


LEGEND

EXISTING	PROPOSED	
	■	SERVICE INSTALLATION, SPECIAL
⊠	⊠	CONTROLLER AND TYPE IV CABINET
----	----	CONDUIT
⊞	⊞	CONCRETE HANDHOLE
⊞⊞	⊞⊞	CONCRETE DOUBLE HANDHOLE

CONSTRUCTION NOTES:

1. THE EXISTING AND PROPOSED INTERCONNECT CONDUIT SIZES AND LOCATIONS WERE DETERMINED FROM A REVIEW OF EXISTING PLANS AND CURSORY FIELD CHECK. THE CONTRACTOR IS RESPONSIBLE FOR DETERMINING THE ACCURACY OF THE INFORMATION TO HIS(HER) SATISFACTION.
2. THE CONTRACTOR, AT HIS(HER) OPTION, MAY CHOOSE TO REMOVE AND REINSTALL EXISTING SIGNAL CABLE FROM CONDUITS TO FACILITATE THE INSTALLATION OF THE FIBER OPTIC CABLE. THIS WORK SHALL BE INCIDENTAL TO THE COST OF THE FIBER OPTIC CABLE.



SCHEDULE OF QUANTITIES

DESCRIPTION	UNIT	TOTAL QUANTITY
HANDHOLE, PORTLAND CEMENT CONCRETE	EACH	3
CONDUIT IN TRENCH, 50MM DIA., PVC	METER	52.9
CONDUIT PUSHED, 50MM DIA., PVC	METER	80.3
TRENCH AND BACKFILL FOR ELECTRICAL WORK	METER	52.9
ELECTRIC CABLE IN CONDUIT, TRACER, NO. 14 1C	METER	183.4
FIBER OPTIC CABLE IN CONDUIT, NO. 62.5/125, MM12F SM12F	METER	183.4

REVISIONS	
ARR	1/07

ILLINOIS DEPARTMENT OF TRANSPORTATION  
 TRAFFIC SIGNAL INTERCONNECT PLAN  
 FAP 591 (US 34) AND WEST STREET  
 SECTION (15R) TS-1 & I  
 KENDALL COUNTY  
 DRAWN BY ARR  
 CHECKED BY JLS  
 DATE 11/06

F.A.P. RTE.	SECTION	COUNTY	TOTAL SHEETS	SHEET NO.
*	**	KENDALL	12	10
STA.		TO STA.		
FED. ROAD DIST. NO. -		ILLINOIS FED. AID PROJECT		

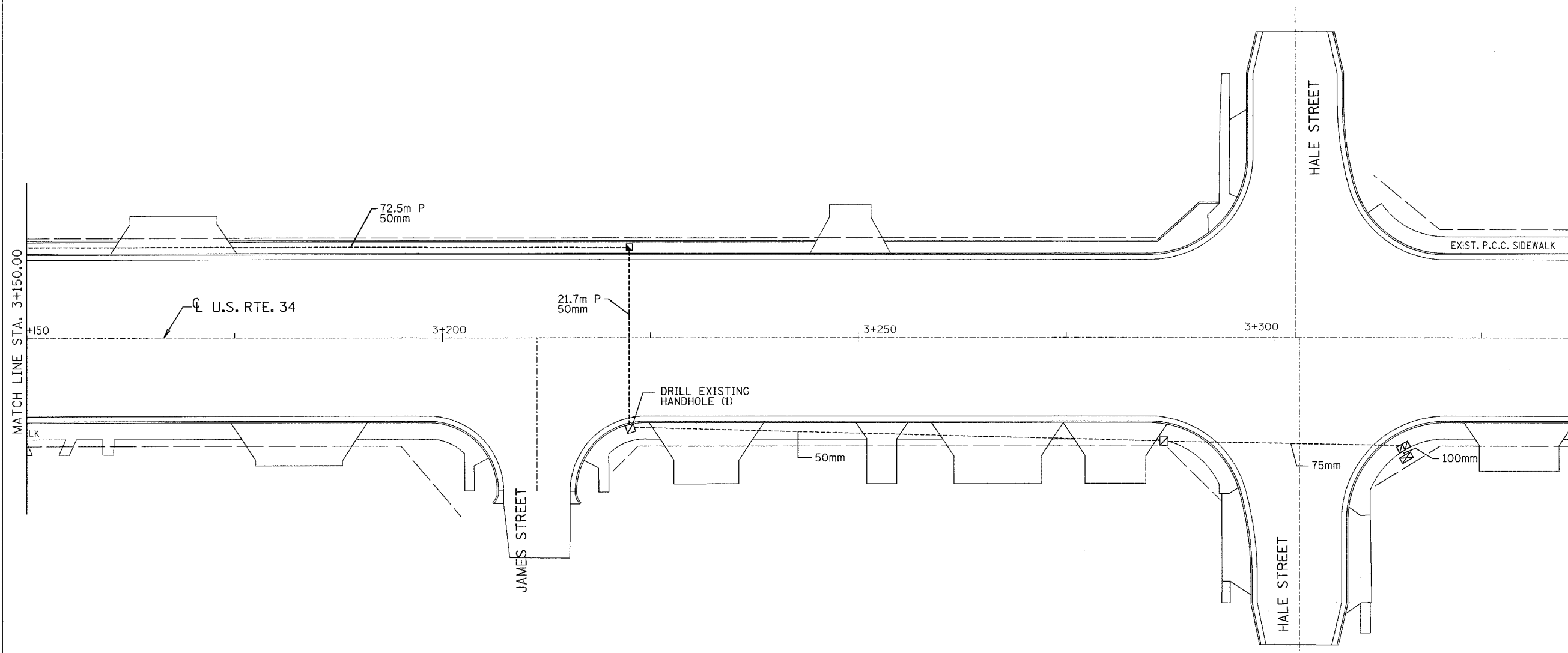
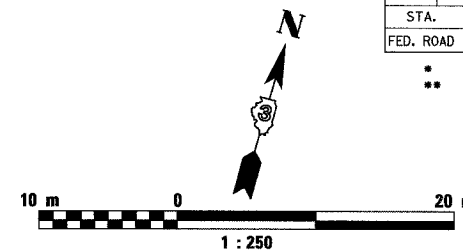
- \* FAP ROUTE 591 (US 34)
- \*\* SECTION (15R) TS-1 & I

**LEGEND**

EXISTING	PROPOSED	
	■	SERVICE INSTALLATION, SPECIAL
☒	☒	CONTROLLER AND TYPE IV CABINET
---	---	CONDUIT
☐	☐	CONCRETE HANDHOLE
☒	☒	CONCRETE DOUBLE HANDHOLE

**CONSTRUCTION NOTES:**

1. THE EXISTING AND PROPOSED INTERCONNECT CONDUIT SIZES AND LOCATIONS WERE DETERMINED FROM A REVIEW OF EXISTING PLANS AND CURSORY FIELD CHECK. THE CONTRACTOR IS RESPONSIBLE FOR DETERMINING THE ACCURACY OF THE INFORMATION TO HIS(HER) SATISFACTION.
2. THE CONTRACTOR, AT HIS(HER) OPTION, MAY CHOOSE TO REMOVE AND REINSTALL EXISTING SIGNAL CABLE FROM CONDUITS TO FACILITATE THE INSTALLATION OF THE FIBER OPTIC CABLE. THIS WORK SHALL BE INCIDENTAL TO THE COST OF THE FIBER OPTIC CABLE.



**SCHEDULE OF QUANTITIES**

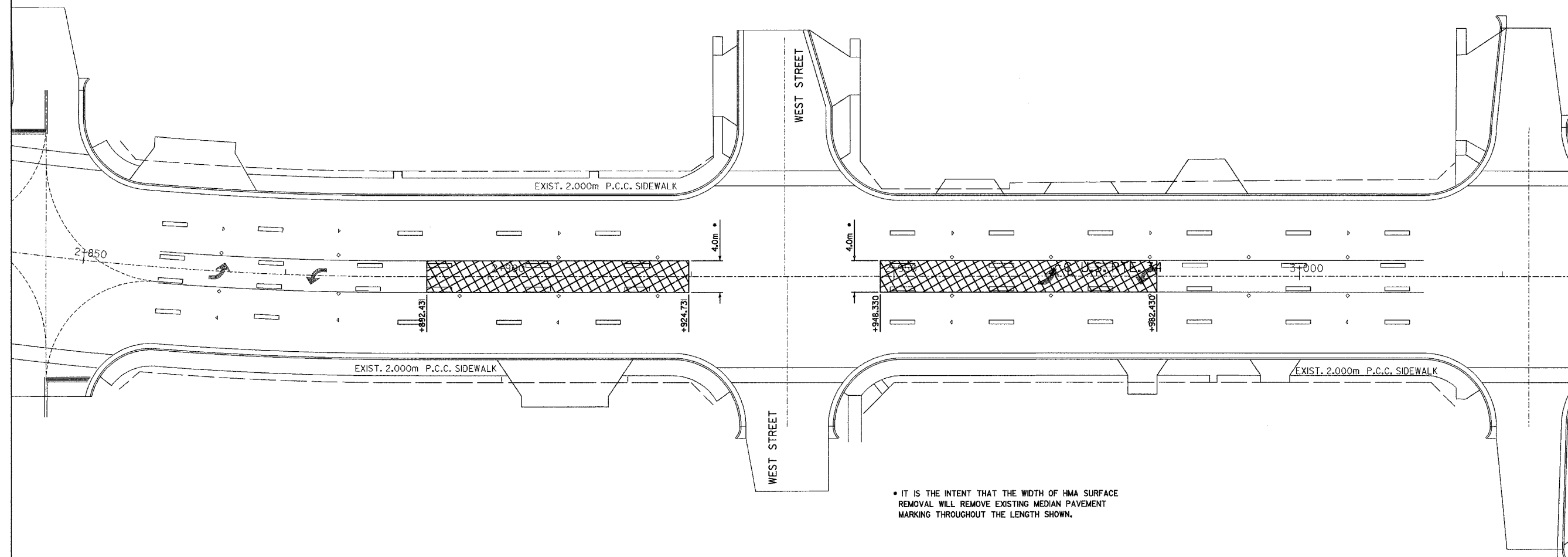
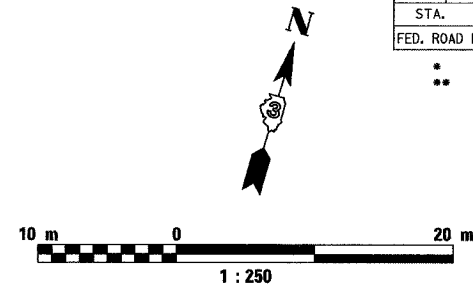
DESCRIPTION	UNIT	TOTAL QUANTITY
HANDHOLE, PORTLAND CEMENT CONCRETE	EACH	1
TRANSCEIVER-FIBER OPTIC	EACH	1
DRILL EXISTING HANDHOLE	EACH	1
MODIFY EXISTING CONTROLLER	EACH	1
CONDUIT PUSHED, 50MM DIA., PVC	METER	94.2
ELECTRIC CABLE IN CONDUIT, TRACER, NO. 14 1C	METER	198
FIBER OPTIC CABLE IN CONDUIT, NO. 62.5/125, MM12F SM12F	METER	198

REVISIONS	
ARR	1/07

ILLINOIS DEPARTMENT OF TRANSPORTATION  
 TRAFFIC SIGNAL INTERCONNECT PLAN  
 FAP 591 (US 34) AND WEST STREET  
 SECTION (15R) TS-1 & I  
 KENDALL COUNTY  
 DRAWN BY ARR  
 CHECKED BY JLS  
 DATE 11/06

F.A.P. RTE.	SECTION	COUNTY	TOTAL SHEETS	SHEET NO.
*	**	KENDALL	12	11
STA.		TO STA.		
FED. ROAD DIST. NO. _		ILLINOIS FED. AID PROJECT		

- \* FAP ROUTE 591 (US 34)
- \*\* SECTION (15R) TS-1 & I



• IT IS THE INTENT THAT THE WIDTH OF HMA SURFACE REMOVAL WILL REMOVE EXISTING MEDIAN PAVEMENT MARKING THROUGHOUT THE LENGTH SHOWN.

M4400740 HOT-MIX ASPHALT SURFACE REMOVAL, 40MM	
LOCATION	SQ. M
STA. 2+892.431 TO STA. 2+924.731	129.2
STA. 2+948.330 TO STA. 2+982.430	136.4
<b>TOTAL</b>	<b>265.6</b>

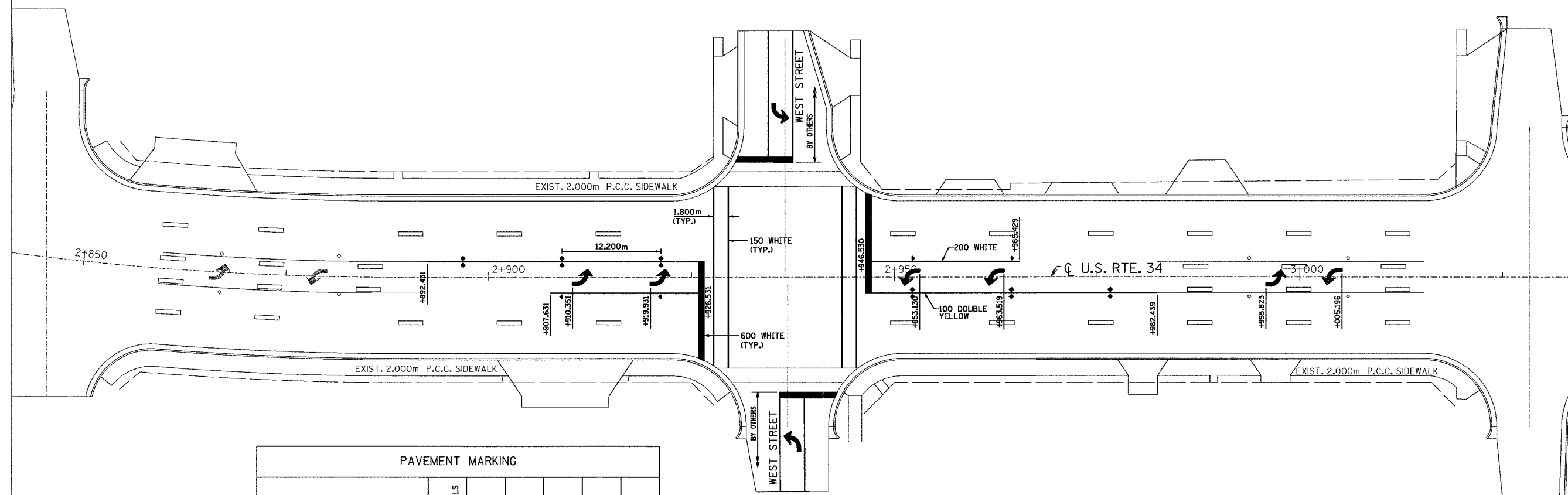
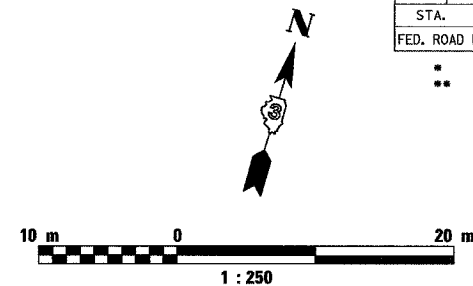
M4063340 HOT-MIX ASPHALT SURFACE COURSE, MIX "D", N70	
LOCATION	MTON
STA. 2+892.431 TO STA. 2+924.731	12.4
STA. 2+948.330 TO STA. 2+982.430	13.1
<b>TOTAL</b>	<b>25.5</b>

REVISIONS	
ARR	1/07

ILLINOIS DEPARTMENT OF TRANSPORTATION  
H.M.A. REMOVAL AND REPLACEMENT PLAN  
FAP 591 (US 34) AND WEST STREET  
SECTION (15R) TS-1 & I  
KENDALL COUNTY  
DRAWN BY ARR  
CHECKED BY JLS  
DATE 11/06

F.A.P. RTE.	SECTION	COUNTY	TOTAL SHEETS	SHEET NO.
*	**	KENDALL	12	12
STA.		TO STA.		
FED. ROAD DIST. NO. ILLINOIS FED. AID PROJECT				

- FAP ROUTE 591 (US 34)
- SECTION (15R) TS-1 & I



PAVEMENT MARKING						
LOCATION	SG. M	METER	METER	METER	METER	EACH
STA. 2+892.431 TO STA. 2+929.531	1,636	67.0	44,392	18.3	12.04	8
STA. 2+943.530 TO STA. 3+005.196	3,272	70.6	44,713	18.3	12.18	8
<b>TOTAL</b>	<b>4,908</b>	<b>137.6</b>	<b>89,105</b>	<b>36.6</b>	<b>24.22</b>	<b>16</b>

REVISIONS	
ARR	1/07

ILLINOIS DEPARTMENT OF TRANSPORTATION  
 PAVEMENT MARKING PLAN  
 FAP 591 (US 34) AND WEST STREET  
 SECTION (15R) TS-1 & I  
 KENDALL COUNTY  
 DRAWN BY ARR  
 CHECKED BY JLS  
 DATE 11/06