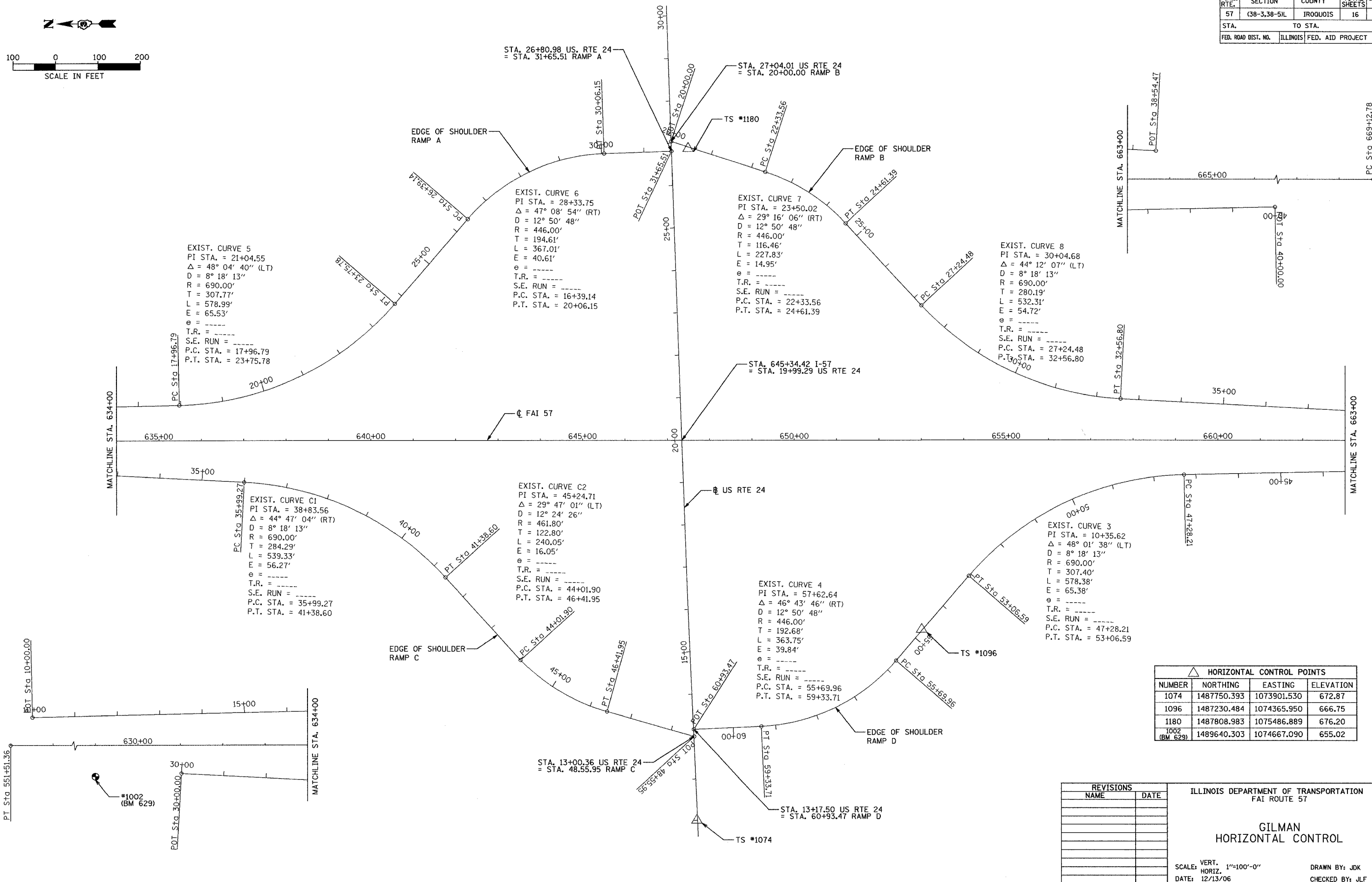
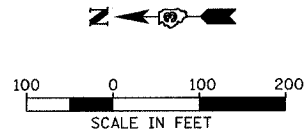


F.A.I. RTE.	SECTION	COUNTY	TOTAL SHEETS	SHEET NO.
57	38-3,38-5H	IROQUOIS	16	4
STA.		TO STA.		
FED. ROAD DIST. NO.		ILLINOIS FED. AID PROJECT		



HORIZONTAL CONTROL POINTS			
NUMBER	NORTHING	EASTING	ELEVATION
1074	1487750.393	1073901.530	672.87
1096	1487230.484	1074365.950	666.75
1180	1487808.983	1075486.889	676.20
1002 (BM 629)	1489640.303	1074667.090	655.02

REVISIONS	
NAME	DATE

ILLINOIS DEPARTMENT OF TRANSPORTATION  
FAI ROUTE 57

**GILMAN  
HORIZONTAL CONTROL**

SCALE: VERT. 1"=100'-0"  
HORIZ. 1"=100'-0"

DATE: 12/13/06

DRAWN BY: JDK  
CHECKED BY: JLF

PLOT TIME = 2:37:43 PM  
 PLOT DATE = 12/13/06  
 PLOT SCALE = 1/8"=100'  
 USER NAME = JLF