

F.A.I. RTE.	SECTION	COUNTY	TOTAL SHEETS	SHEET NO.
57	(38-3,38-5)L	IROQUOIS	16	1

STATE OF ILLINOIS
DEPARTMENT OF TRANSPORTATION
DIVISION OF HIGHWAYS

**PROPOSED
HIGHWAY PLANS**

F.A.I. ROUTE 57 (I-57)
SECTION (38-3,38-5)L
PROJECT HSIP- 057-6 (184) 294
IROQUOIS COUNTY
C-93-116-06

INDEX OF SHEETS

SHEET NO.	DESCRIPTION
1.	COVER SHEET
2.	GENERAL NOTES & SUMMARY OF QUANTITIES
3.	SCHEDULE OF QUANTITIES
4.-5.	HORIZONTAL CONTROL
6.	SURVEY TIES
7.-8.	DEMOLITION PLANS
9.-10.	LIGHTING PLANS
11.	CIRCUIT DIAGRAM
12.	LUMINAIRE PERFORMANCE TABLES
13.	CONTROLLER DETAILS
14.-16.	LIGHTING STANDARDS

HIGHWAY STANDARDS

000001-04	STANDARDS, SYMBOLS, ABBREVIATIONS, AND PATTERNS
701001-01	OFF-ROAD OPERATIONS, 2L, 2W, > 4.5m (15') FROM EDGE OF PAVEMENT
701006-02	OFF-ROAD OPERATIONS, 2L, 2W, 4.5m (15') TO 600mm (24") FROM EDGE OF PAVEMENT
701101-01	OFF-ROAD OPERATIONS, MULTI-LANE, < 4.5m (15') FROM EDGE OF PAVEMENT
701106-01	OFF-ROAD OPERATIONS, MULTI-LANE, > 4.5m (15') FROM EDGE OF PAVEMENT
701201-02	LANE CLOSURE, 2L, 2W, DAY ONLY
701301-02	LANE CLOSURE, 2L, 2W, SHORT TIME OPERATIONS
702001-06	TRAFFIC CONTROL DEVICES

D93-057-06



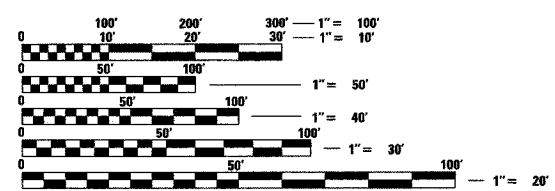
Dirk A. Ranneberger
DIRK A. RANNEBERGER, P.E.
LEAD ELECTRICAL ENGINEER
REGISTERED PROFESSIONAL ENGINEER
ILLINOIS NO. 58019 EXPIRES NOVEMBER 30, 2007

12/13/06
DATE



Thomas L. Overmyer
THOMAS L. OVERMYER, P.E.
REGISTERED PROFESSIONAL ENGINEER
ILLINOIS NO. 49198 EXPIRES NOVEMBER 30, 2007

12/13/06
DATE



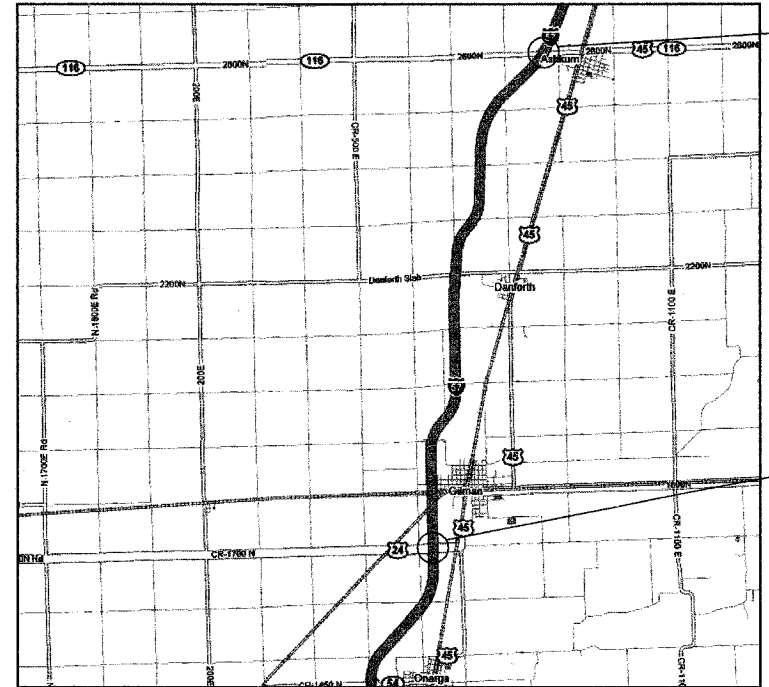
FULL SIZE PLANS HAVE BEEN PREPARED USING STANDARD ENGINEERING SCALES. REDUCED SIZED PLANS WILL NOT CONFORM TO STANDARD SCALES. IN MAKING MEASUREMENTS ON REDUCED PLANS, THE ABOVE SCALES MAY BE USED.

J.U.L.I.E.
JOINT UTILITY LOCATION INFORMATION FOR EXCAVATION
1-800-892-0123 (GILMAN T.26N; R.11E; SEC 6 & 7)
(ASHKUM T.28N; R14W; SEC. 20 & 29)

DISTRICT 3 NO.: (815) 434-6131
PROJECT ENGINEER: JOE KANNEL
UNIT CHIEF: MICHELE LINDEMANN

CONTRACT NO. 66685

INTERCHANGE LIGHTING AT U.S. 24 AND IL 116



ASHKUM, IL
I-57 & IL 116
STA. 659+25.59 RTE 116
= STA. 129+68.38 I-57



GILMAN, IL
I-57 & U.S. RTE. 24
STA. 19+99.29 US RTE 24
= STA. 645+34.42 I-57

**LOCATION MAP
SPOT IMPROVEMENT**

HIGHWAY CLASSIFICATIONS

FAI 57-INTERSTATE
2005 ADT=17,000 SOUTH OF U.S. 24
2005 ADT=15,500 NORTH OF U.S.24/SOUTH OF IL 116
2005 ADT=16,100 NORTH OF IL 116
U.S. 24-PRINCIPAL ARTERIAL
2005 ADT=9,100 EAST OF I-57
2005 ADT=5,500 WEST OF I-57
IL 116-PRINCIPAL ARTERIAL
2005 ADT=2,400 EAST OF I-57
2005 ADT=2,100 WEST OF I-57

STATE OF ILLINOIS
DEPARTMENT OF TRANSPORTATION
DIVISION OF HIGHWAYS
SUBMITTED *December 26* 2006
Don O'Keefe
DEPUTY DIRECTOR OF HIGHWAYS, REGION 2 ENGINEER
February 2, 2006
Eric F. Rasmussen
ENGINEER OF DESIGN AND ENVIRONMENT
February 2, 2006
Milton R. Sosa, P.E.
DIRECTOR OF HIGHWAYS, CHIEF ENGINEER

**PRINTED BY THE AUTHORITY
OF THE STATE OF ILLINOIS**

Prepared By:
Foth & Van Dyke
DAILY DIVISION
1610 BROADMOOR DRIVE
CHAMPAIGN, ILLINOIS 61821
PHONE: (217) 352-4169 FAX: (217) 352-0085
IL DESIGN FIRM REG. NO. 184-003283

F.A.I. RTE.	SECTION	COUNTY	TOTAL SHEETS	SHEET NO.
57	(38-3,38-5)L	IROQUOIS	16	2
STA.		TO STA.		
FED. ROAD DIST. NO.		ILLINOIS	FED. AID PROJECT	

GENERAL NOTES

- ELEVATIONS ARE BASED ON N.G.S. VERTICAL DATUM OF 1929.
- THE CONTRACTOR SHALL PROTECT AND CAREFULLY PRESERVE ALL PROPERTY MARKERS AND MONUMENTS UNTIL THE OWNER, AUTHORIZED AGENT, OR LAND SURVEYOR HAS WITNESSED OR OTHERWISE REFERENCED THEIR LOCATION. WHERE SECTION OR SUB-SECTION MONUMENTS ARE ENCOUNTERED, THE ENGINEER SHALL BE NOTIFIED BEFORE SUCH MONUMENTS ARE REMOVED. THE CONTRACTOR SHALL BE RESPONSIBLE FOR HAVING AN AUTHORIZED SURVEYOR RE-ESTABLISH ANY SECTION OR SUB-SECTION MONUMENTS DESTROYED BY HIS OPERATIONS.
- ALL UNSURFACED AREAS WITHIN THE R.O.W. AND EASEMENTS SHALL BE SEEDED, FERTILIZED, AND MULCHED AS SHOWN IN THE PLANS, SPECIAL PROVISIONS, AND AS DIRECTED BY THE ENGINEER. SEEDING WILL NOT BE PERMITTED AT ANY TIME WHEN THE GROUND IS FROZEN, WET OR IN AN UNTILLABLE CONDITION.
- IN ACCORDANCE WITH THE STATE OF ILLINOIS P.A. 86-0674. THE CONTRACTOR SHALL COORDINATE CONSTRUCTION ACTIVITIES WITH UTILITY COMPANIES AND SHALL NOTIFY ALL UTILITY COMPANIES NOT MORE THAN 14 DAYS NOR LESS THAN 48 HOURS (EXCLUSIVE OF SATURDAYS, SUNDAYS, AND HOLIDAYS) IN ADVANCE OF THE START OF EXCAVATION OR DEMOLITION.
- THE LOCATION OF BURIED AND ABOVE GROUND UTILITIES SHOWN ARE APPROXIMATE, AND ARE SHOWN FOR CONTRACTOR INFORMATIONAL USE ONLY, AND ARE NOT TO BE REFERENCED FOR CONSTRUCTION PURPOSES. THE IMPLIED PRESENCE OR ABSENCE OF UTILITIES IS NOT TO BE CONSTRUED BY THE OWNER, ENGINEER, CONTRACTOR, OR SUB-CONTRACTORS TO BE AN ACCURATE AND COMPLETE REPRESENTATION OF UTILITIES THAT MAY OR MAY NOT EXIST ON THE CONSTRUCTION SITE. BURIED AND ABOVE GROUND UTILITY LOCATIONS, IDENTIFICATION, DISCONNECTION, PROTECTION, ETC. OF ANY UTILITIES MUST BE COORDINATED BETWEEN THE CONTRACTOR, UTILITY COMPANY AND THE OWNER. SITE SAFETY, INCLUDING THE AVOIDANCE OF HAZARDS ASSOCIATED WITH BURIED AND ABOVE GROUND UTILITIES, REMAINS THE SOLE RESPONSIBILITY OF THE CONTRACTOR AS PER ARTICLE 107.31 OF THE STANDARD SPECIFICATIONS.
- UNDERGROUND UTILITIES AND CATS FACILITIES SHALL BE LOCATED BY THEIR OWNER/OPERATORS TO AVOID OR MINIMIZE INTERFERENCE WITH SAID FACILITIES BY EXCAVATION AND/OR DEMOLITION PROCEDURES. APPROXIMATE LOCATIONS SHALL BE DEFINED AS A STRIP OF LAND AT LEAST 3' WIDE, BUT NOT WIDER THAN THE FACILITY PLUS 1-1/2 FEET ON EITHER SIDE AS DEFINED IN THE ILLINOIS UNDERGROUND UTILITIES FACILITIES DAMAGE PREVENTION ACT.
- ABANDONED UNDERGROUND UTILITIES THAT CONFLICT WITH CONSTRUCTION SHALL BE DISPOSED OF OUTSIDE THE LIMITS OF THE RIGHT OF WAY ACCORDING TO ARTICLE 202.03 ON THE STANDARD SPECIFICATIONS AND AS DIRECTED BY THE ENGINEER. THIS WORK WILL NOT BE PAID FOR SEPARATELY BUT SHALL BE INCLUDED IN THE COST OF EARTH EXCAVATION.
- IT IS THE RESPONSIBILITY OF THE CONTRACTOR TO ASCERTAIN EXISTING FIELD CONDITIONS BEFORE BIDDING ON THIS PROJECT, ESPECIALLY AS THEY RELATE TO LUMP SUM ITEMS AND UNIT PRICE ITEMS.
- ALL NEW CONDUIT, UNIT DUCTS, AND APPURTENANCES ARE INDICATED DIAGRAMMATICALLY ON THE DRAWINGS. THE ACTUAL LOCATIONS IN THE FIELD SHALL MEET WITH APPROVAL OF THE ENGINEER.
- CONDUITS AND UNIT DUCTS SHALL BE POSITIONED IN THE FIELD TO AVOID CONFLICT WITH ROADWAY UNDER DRAINS AND OTHER EXISTING AND PROPOSED UTILITIES. THE CONTRACTOR SHALL INCREASE DEPTH OF UNIT DUCT AND CONDUIT AS REQUIRED AT NO ADDITIONAL COST TO THE STATE. THE CONTRACTOR SHALL COORDINATE RACEWAY DEPTH WITH THE ELECTRICAL DETAILS AND THE ENGINEER.
- WHERE MULTIPLE CONDUITS ADJACENT TO EACH OTHER ARE INSTALLED IN A COMMON TRENCH, TRENCH AND BACKFILL WILL NOT BE PAID FOR EACH CONDUIT, BUT WILL BE PAID FOR THE LENGTH OF THE COMMON TRENCH ONLY.
- THE CONTRACTOR SHALL FURNISH AND INSTALL LUMINAIRE LAMPS IN ACCORDANCE WITH THE SUPPLIER'S RECOMMENDATIONS AND IN ACCORDANCE WITH THE SPECIFICATIONS. THE COST OF THIS WORK AND MATERIAL SHALL BE INCLUDED IN THE APPLICABLE LUMINAIRE PAY ITEMS. SEPARATE PAYMENT WILL NOT BE MADE.
- ALL LUMINAIRES SHALL BE ORIENTED WITH THE OPTICS PERPENDICULAR TO THE ROADWAY UNLESS OTHERWISE INDICATED OR DIRECTED BY THE ENGINEER. THIS WORK SHALL BE CONSIDERED INCLUDED IN THE APPLICABLE LUMINAIRE PAY ITEMS. SEPARATE PAYMENT WILL NOT BE MADE.
- THE CONTRACTOR SHALL AVOID ANY UTILITY CONFLICTS IF POSSIBLE. LIGHTING FOUNDATIONS CAN BE SLIGHTLY RELOCATED UNDER THE DISCRETION OF THE ENGINEER.
- THE MINIMUM WALL THICKNESS OF THE LIGHT POLE SHALL BE 0.312 INCHES. IF ALUMINUM LIGHT POLES CANNOT BE PROVIDED TO THIS SPECIFICATION, THE FOLLOWING PAY ITEM MAYBE SUBSTITUTED WITH THE ENGINEERS APPROVAL.
83060550 LIGHT POLE, GALVANIZED STEEL, 50FT. M.H., 15FT. MAST ARM EACH
- THE CONTRACTOR SHALL FURNISH AND INSTALL A LIGHT POLE IDENTIFICATION ON EACH NEW LIGHT POLE IN ACCORDANCE WITH NOTES AND DETAILS SHOWN ON POLE STANDARDS LGT0008.M32. THE CONTRACTOR SHALL USE THE FOLLOWING FOR THEIR POLE IDENTIFICATION:
I-57 & U.S. ROUTE 24 LOCATION NUMBER 27, POLE NUMBERS 1-68
I-57 & IL 116 LOCATION NUMBER 52, POLE NUMBERS 1-29

SUMMARY OF QUANTITIES					
PAY CODE	DESCRIPTION	UNIT	TOTAL QUANTITY	90% FED. 10% STATE	
				Y030-1E (GILMAN) QUANTITY	Y030-1E (ASHKUM) QUANTITY
20100110	TREE REMOVAL (6 TO 15 UNITS DIAMETER)	UNIT	25	25	0
67100100	MOBILIZATION	LSUM	1	0.5	0.5
70100450	TRAFFIC CONTROL AND PROTECTION, STANDARD 701201	LSUM	1	0.5	0.5
80400100	ELECTRIC SERVICE INSTALLATION	EACH	2	1	1
81020700	CONDUIT PUSHED, 3" DIA., INTERMEDIATE METAL	FOOT	1,020	495	525
81603000	UNIT DUCT, 600V, 2-1C NO.8, 1/C NO.8 GROUND, (XLP-TYPE USE), 3/4" DIA. POLYETHYLENE	FOOT	20,770	13,300	7,470
81603035	UNIT DUCT, 600V, 2-1C NO.6, 1/C NO.6 GROUND, (XLP-TYPE USE), 1" DIA. POLYETHYLENE	FOOT	3,576	1,827	1,749
81900200	TRENCH AND BACKFILL FOR ELECTRICAL WORK	FOOT	21,497	13,978	7,519
82102250	LUMINAIRE, SODIUM VAPOR, HORIZONTAL MOUNT, 250 WATT	EACH	97	68	29
82500540	LIGHTING CONTROLLER TYPE CB-RCS 100AMP - 480VOLT	EACH	2	1	1
83010600	LIGHT POLE, ALUMINUM, 50 FT. M.H., 15 FT. MAST ARM	EACH	97	68	29
83600357	LIGHT POLE FOUNDATION METAL, 15" BOLT CIRCLE, 8" X 8"	EACH	97	68	29
83800650	BREAKAWAY DEVICE, COUPLING, WITH STAINLESS STEEL SCREEN	EACH	388	272	116
84200500	REMOVAL OF EXISTING LIGHTING UNIT, SALVAGE	EACH	6	2	4
84200600	REMOVAL OF EXISTING LIGHTING UNIT, NO SALVAGE	EACH	19	14	5
84200700	LIGHTING FOUNDATION REMOVAL	EACH	28	16	12
84500110	REMOVAL OF LIGHTING CONTROLLER	EACH	3	2	1
84500130	REMOVAL OF LIGHTING CONTROLLER FOUNDATION	EACH	3	2	1
X0323710	REMOVE CONDUIT ATTACHED TO STRUCTURE	FOOT	334	0	334
X0324223	MAINTAIN EXISTING LIGHTING SYSTEM	LSUM	1	0.5	0.5
XX004029	SEEDING CLASS 2 SPECIAL	LSUM	1	0.5	0.5
Z0013798	CONSTRUCTION LAYOUT	LSUM	1	0.5	0.5

PREPARED BY: JLF
CHECKED BY: JOK

■ SFTY-3C

summary.x2a

STATE OF ILLINOIS
DEPARTMENT OF TRANSPORTATION
DISTRICT THREE

PREPARED BY: *Rail Powell*
DISTRICT STUDIES & PLANS ENGINEER

DATE: 12-26-06

EXAMINED BY: *Herb Jones*
DISTRICT CONSTRUCTION ENGINEER

Monte Jewell
DISTRICT MATERIALS ENGINEER
Bruce Huchan

REVISIONS	
NAME	DATE
REVISION 1	12/21/06

ILLINOIS DEPARTMENT OF TRANSPORTATION
FAI ROUTE 57

GENERAL NOTES &
SUMMARY OF QUANTITIES

SCALE: VERT. NO SCALE
HORIZ. DATE: 12/13/06
DRAWN BY: JDK
CHECKED BY: JLF

PLOT TIME = 3:09:34 PM
PLOT DATE = 12/21/2006
FILE NAME = X:\CH\VE\2006\06\008\Plans\07-rts\user\general_notes.dgn
PLOT SCALE = 1:80000 / 1"=1/2 MI.
USER NAME = JLF

F.A.I. RTE.	SECTION	COUNTY	TOTAL SHEETS	SHEET NO.
57	(38-3,38-5)L	IROQUOIS	16	3
STA. TO STA.				
FED. ROAD DIST. NO. ILLINOIS FED. AID PROJECT				

CONDUIT SCHEDULE - GILMAN							
LOCATION		CONDUIT PUSHED 3" DIA IM (FOOT)	UNIT DUCT 2#8 #8G XLPUSE 3/4" DIA (FOOT)	UNIT DUCT 2#6 #6G XLPUSE 1" DIA (FOOT)	TRENCH BACKFILL FOR ELECT WK (FOOT)	FROM	TO
FROM	TO						
GILMAN, IL							
CONT	1		116		103	CONT	1
1	2		232		226	1	2
2	3		240		234	2	3
3	4		222		216	3	4
4	5		223		217	4	5
5	6	30	145		109	5	6
6	7		208		202	6	7
7	8		208		202	7	8
8	9		208		202	8	9
9	10		208		202	9	10
5	11		253		247	5	11
11	12		214		208	11	12
12	13		221		215	12	13
13	14		225		219	13	14
CONT	15	35		312	264	CONT	15
15	16		349		343	15	16
16	17	90	240		144	16	17
17	18		239		233	17	18
18	19		350		344	18	19
19	20	30	145		109	19	20
20	21		225		219	20	21
21	22		220		214	21	22
22	23		214		208	22	23
23	24		198		192	23	24
17	25		208		202	17	25
25	26		208		202	25	26
26	27		208		202	26	27
27	28		208		202	27	28
28	29	30	130		94	28	29
29	30		205		199	29	30
30	31		212		206	30	31
31	32		217		211	31	32
CONT	33	100		349	236	CONT	33
33	34			346	340	33	34
34	35	90		408	312	34	35
35	36			83	77	35	36
36	37		346		340	36	37
37	38	30	324		288	37	38
38	39		172		166	38	39
38	40		262		256	38	40
40	41		244		238	40	41
41	42		218		212	41	42
42	43		217		211	42	43
35	44			206	200	35	44
44	45			206	200	44	45
45	46		206		200	45	46
46	47		206		200	46	47
47	48	30	188		152	47	48
48	49		190		184	48	49
49	50		206		200	49	50
50	51		206		200	50	51
51	52		211		205	51	52
CONT	53		61		0	CONT	53
53	54		236		60	53	54
54	55		246		240	54	55
55	56		221		215	55	56
56	57		221		215	56	57
57	58		218		212	57	58
58	59	30	188		152	58	59
59	60		206		200	59	60
60	61		206		200	60	61
61	62		206		200	61	62
62	63		206		200	62	63
58	64		271		265	58	64
64	65		211		205	64	65
65	66		211		205	65	66
66	67		208		202	66	67
67	68		206		200	67	68
TOTAL		495	13,300	1,827	13,978		

CONDUIT SCHEDULE - ASHKUM							
LOCATION		CONDUIT PUSHED 3" DIA IM (FOOT)	UNIT DUCT 2#8 #8G XLPUSE 3/4" DIA (FOOT)	UNIT DUCT 2#6 #6G XLPUSE 1" DIA (FOOT)	TRENCH BACKFILL FOR ELECT WK (FOOT)	FROM	TO
FROM	TO						
ASHKUM, IL							
CONT	1	90		533	430	CONT	1
1	2			1216	1210	1	2
2	3		180		174	2	3
3	4		194		188	3	4
4	5		194		188	4	5
5	6		194		188	5	6
6	7	100	253		147	6	7
7	8		196		190	7	8
8	9		196		190	8	9
9	10		196		190	9	10
7	11		196		190	7	11
11	12		194		188	11	12
CONT	13	50	724		141	CONT	13
13	14		226		220	13	14
14	15		226		220	14	15
15	16	130	448		312	15	16
16	17		221		215	16	17
17	18		221		215	17	18
18	19	40	188		142	18	19
CONT	24		1386		913	CONT	24
24	20	115	276		155	24	20
20	21		196		190	20	21
21	22		196		190	21	22
22	23		197		191	22	23
24	25		197		191	24	25
25	26		194		188	25	26
26	27		194		188	26	27
27	28		193		187	27	28
28	29		194		188	28	29
TOTAL		525	7,470	1,749	7,519		

PREPARED BY: JJK - CHECKED BY: JLF

conduit.x2a

LUMINAIRE LOCATION SCHEDULE					
LUMINAIRE NUMBER	NORTHING	EASTING	LUMINAIRE NUMBER	NORTHING	EASTING
GILMAN INTERCHANGE			GILMAN INTERCHANGE		
1	1487588.7301	1074119.3070	51	1489459.9771	1074842.5420
2	1487377.1036	1074192.9036	52	1489659.9757	1074832.5159
3	1487219.6938	1074353.7468	53	1487716.9037	1074044.4671
4	1487081.7446	1074519.7576	54	1487914.5262	1074125.4213
5	1486916.9364	1074648.8817	55	1488128.0764	1074213.3114
6	1486881.9877	1074745.6228	56	1488280.3907	1074358.5925
7	1487083.9976	1074740.7374	57	1488429.6893	1074506.1745
8	1487286.0095	1074735.8504	58	1488611.0640	1074614.3765
9	1487488.0183	1074730.9634	59	1488716.9828	1074701.2326
10	1487692.0265	1074726.0281	60	1488517.0030	1074706.0704
11	1486682.8713	1074727.0893	61	1488317.9972	1074710.8847
12	1486480.0012	1074739.9936	62	1488117.9675	1074715.7222
13	1486270.0283	1074751.4891	63	1487917.9899	1074720.5616
14	1486057.9523	1074763.0998	64	1488861.9906	1074661.2553
15	1487736.4597	1074343.7413	65	1489061.9836	1074666.4933
16	1487757.3608	1074686.6480	66	1489261.5710	1074672.4571
17	1487692.0276	1074878.0741	67	1489461.9997	1074676.7937
18	1487781.6923	1075084.0014	68	1489661.9890	1074676.4549
19	1487802.2365	1075427.3857	ASHKUM INTERCHANGE		
20	1487697.8279	1075472.4602	1	1536187.0464	1084739.3630
21	1487495.7381	1075389.9421	2	1536921.8567	1085656.7760
22	1487338.3506	1075244.6567	3	1537074.7216	1085738.5852
23	1487191.2197	1075097.7696	4	1537245.2312	1085818.4900
24	1487029.0153	1074994.9715	5	1537415.4152	1085898.0589
25	1487491.0228	1074882.9368	6	1537586.3802	1085977.1370
26	1487289.0199	1074887.8236	7	1537601.8385	1086164.2423
27	1487087.0153	1074892.7089	8	1537779.0053	1086232.9687
28	1486883.0140	1074897.6440	9	1537956.9277	1086300.4100
29	1486791.0000	1074937.3763	10	1538134.8931	1086365.5326
30	1486596.9984	1074932.0693	11	1537424.0932	1086096.8686
31	1486395.9984	1074925.8576	12	1537244.8939	1086039.4363
32	1486189.9984	1074919.8894	13	1536187.9017	1084880.5142
33	1487811.9778	1074168.1890	14	1536192.4034	1085100.5889
34	1487832.8922	1074507.9112	15	1536202.2350	1085319.8780
35	1487921.9866	1074872.5094	16	1536169.7120	1085577.1990
36	1487857.8536	1074909.1366	17	1536179.8140	1085792.2285
37	1487878.2031	1075248.5287	18	1536183.9109	1086007.3139
38	1487982.2679	1075491.6882	19	1536187.8231	1086145.3006
39	1487899.4222	1075605.8994	20	1535065.2688	1084731.3522
40	1488212.2335	1075422.2329	21	1535199.3282	1084865.9950
41	1488385.0000	1075259.0000	22	1535338.9751	1084995.4860
42	1488520.3352	1075096.2917	23	1535483.8586	1085120.4039
43	1488681.4354	1074961.0588	24	1535225.4274	1084626.9531
44	1488121.4923	1074867.6830	25	1535079.0547	1084504.1116
45	1488320.9949	1074862.8567	26	1534943.1146	1084374.4144
46	1488519.5019	1074858.0258	27	1534808.3877	1084242.9667
47	1488718.9827	1074853.2303	28	1534674.3188	1084112.2000
48	1488877.1126	1074882.5461	29	1534539.2409	1083981.0598
49	1489059.9795	1074862.5908			
50	1489260.0266	1074852.5623			

PREPARED BY: JJK - CHECKED BY: JLF

Luminaire.x2a

REVISIONS	
NAME	DATE
REVISION 1	12/21/06

ILLINOIS DEPARTMENT OF TRANSPORTATION
FAI ROUTE 57

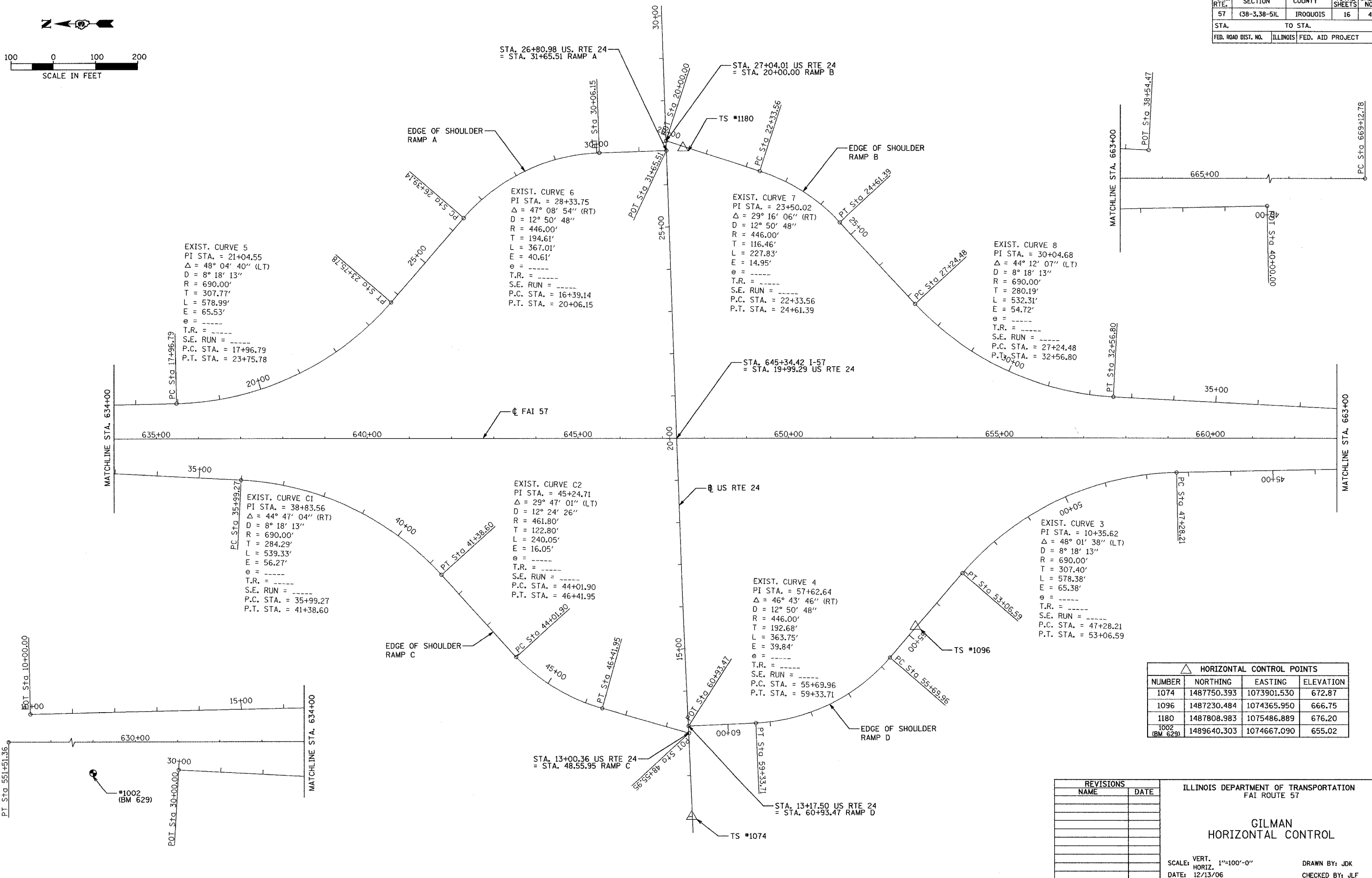
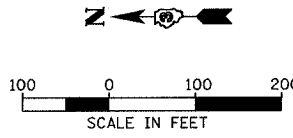
SCHEDULE OF QUANTITIES

SCALE: VERT. 12/13/06
HORIZ. DATE: 12/13/06

DRAWN BY: JJK
CHECKED BY: JLF

PLT TWE = 06/06/06 BY
PLT DVE = 12/21/06
FILE NAME = X:\A\UE\2006\66685\08\PIena\T\T\T\T\T\Schedule of Quantities.dgn
PLT SCALE = 1:8000 / IN.
USER NAME = JLF

F.A.I. RTE.	SECTION	COUNTY	TOTAL SHEETS	SHEET NO.
57	38-3,38-5H	IROQUOIS	16	4
STA.		TO STA.		
FED. ROAD DIST. NO.		ILLINOIS FED. AID PROJECT		



HORIZONTAL CONTROL POINTS			
NUMBER	NORTHING	EASTING	ELEVATION
1074	1487750.393	1073901.530	672.87
1096	1487230.484	1074365.950	666.75
1180	1487808.983	1075486.889	676.20
1002 (BM 629)	1489640.303	1074667.090	655.02

REVISIONS	
NAME	DATE

ILLINOIS DEPARTMENT OF TRANSPORTATION
FAI ROUTE 57

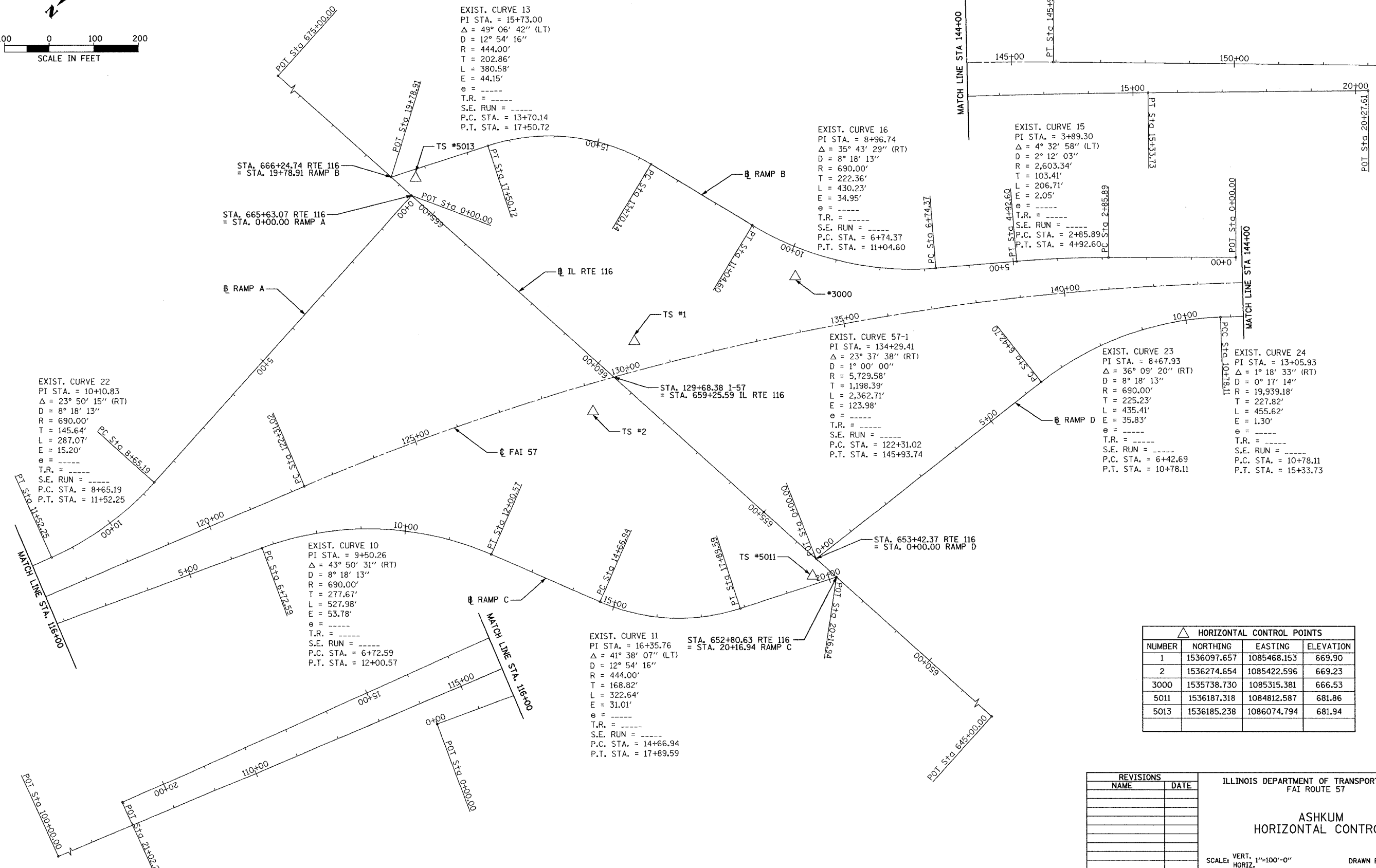
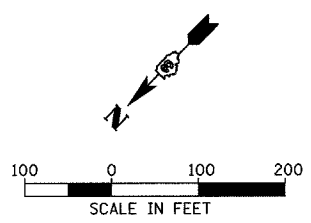
GILMAN
HORIZONTAL CONTROL

SCALE: VERT. 1"=100'-0"
HORIZ. 1"=100'-0"
DATE: 12/13/06
DRAWN BY: JDK
CHECKED BY: JLF

PLOT TIME = 2:37:43 PM
PLOT DATE = 12/13/06
PLOT SCALE = 1/8"=100'
USER NAME = JLF

12/13/06 2:37:43 PM

F.A.I. RTE.	SECTION	COUNTY	TOTAL SHEETS	SHEET NO.
57	(38-3,38-5)L	IROQUOIS	16	5
STA.		TO STA.		
FED. ROAD DIST. NO.		ILLINOIS	FED. AID PROJECT	



EXIST. CURVE 13
 PI STA. = 15+73.00
 $\Delta = 49^\circ 06' 42''$ (LT)
 D = 12° 54' 16"
 R = 444.00'
 T = 202.86'
 L = 380.58'
 E = 44.15'
 e = -----
 T.R. = -----
 S.E. RUN = -----
 P.C. STA. = 13+70.14
 P.T. STA. = 17+50.72

EXIST. CURVE 16
 PI STA. = 8+96.74
 $\Delta = 35^\circ 43' 29''$ (RT)
 D = 8° 18' 13"
 R = 690.00'
 T = 222.36'
 L = 430.23'
 E = 34.95'
 e = -----
 T.R. = -----
 S.E. RUN = -----
 P.C. STA. = 6+74.37
 P.T. STA. = 11+04.60

EXIST. CURVE 15
 PI STA. = 3+89.30
 $\Delta = 4^\circ 32' 58''$ (LT)
 D = 2° 12' 03"
 R = 2,603.34'
 T = 103.41'
 L = 206.71'
 E = 2.05'
 e = -----
 T.R. = -----
 S.E. RUN = -----
 P.C. STA. = 2+85.89
 P.T. STA. = 4+92.60

EXIST. CURVE 22
 PI STA. = 10+10.83
 $\Delta = 23^\circ 50' 15''$ (RT)
 D = 8° 18' 13"
 R = 690.00'
 T = 145.64'
 L = 287.07'
 E = 15.20'
 e = -----
 T.R. = -----
 S.E. RUN = -----
 P.C. STA. = 8+65.19
 P.T. STA. = 11+52.25

EXIST. CURVE 57-1
 PI STA. = 134+29.41
 $\Delta = 23^\circ 37' 38''$ (RT)
 D = 1° 00' 00"
 R = 5,729.58'
 T = 1,198.39'
 L = 2,362.71'
 E = 123.98'
 e = -----
 T.R. = -----
 S.E. RUN = -----
 P.C. STA. = 122+31.02
 P.T. STA. = 145+93.74

EXIST. CURVE 23
 PI STA. = 8+67.93
 $\Delta = 36^\circ 09' 20''$ (RT)
 D = 8° 18' 13"
 R = 690.00'
 T = 225.23'
 L = 435.41'
 E = 35.83'
 e = -----
 T.R. = -----
 S.E. RUN = -----
 P.C. STA. = 6+42.69
 P.T. STA. = 10+78.11

EXIST. CURVE 24
 PI STA. = 13+05.93
 $\Delta = 1^\circ 18' 33''$ (RT)
 D = 0° 17' 14"
 R = 19,939.18'
 T = 227.82'
 L = 455.62'
 E = 1.30'
 e = -----
 T.R. = -----
 S.E. RUN = -----
 P.C. STA. = 10+78.11
 P.T. STA. = 15+33.73

EXIST. CURVE 10
 PI STA. = 9+50.26
 $\Delta = 43^\circ 50' 31''$ (RT)
 D = 8° 18' 13"
 R = 690.00'
 T = 277.67'
 L = 527.98'
 E = 53.78'
 e = -----
 T.R. = -----
 S.E. RUN = -----
 P.C. STA. = 6+72.59
 P.T. STA. = 12+00.57

EXIST. CURVE 11
 PI STA. = 16+35.76
 $\Delta = 41^\circ 38' 07''$ (LT)
 D = 12° 54' 16"
 R = 444.00'
 T = 168.82'
 L = 322.64'
 E = 31.01'
 e = -----
 T.R. = -----
 S.E. RUN = -----
 P.C. STA. = 14+66.94
 P.T. STA. = 17+89.59

△ HORIZONTAL CONTROL POINTS			
NUMBER	NORTHING	EASTING	ELEVATION
1	1536097.657	1085468.153	669.90
2	1536274.654	1085422.596	669.23
3000	1535738.730	1085315.381	666.53
5011	1536187.318	1084812.587	681.86
5013	1536185.238	1086074.794	681.94

REVISIONS	
NAME	DATE

ILLINOIS DEPARTMENT OF TRANSPORTATION
 FAI ROUTE 57
 ASHKUM
 HORIZONTAL CONTROL
 VERT. SCALE: 1"=100'-0"
 HORIZ. SCALE: 1"=100'-0"
 DATE: 12/13/06
 DRAWN BY: JJK
 CHECKED BY: JLF

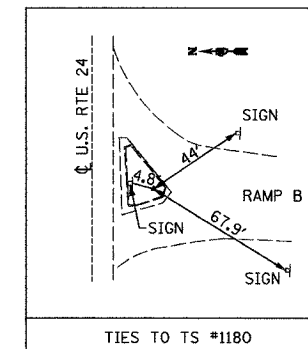
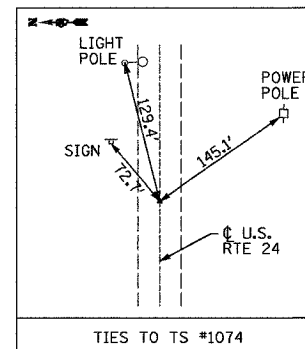
PLOT TIME = 2:06:07 PM
 PLOT DATE = 12/15/2006
 FILE NAME = X:\CHANCE\2006\66685\PI\plan\7\exchange\Plane\baseline.dgn
 PLOT SCALE = 1/8"=100'-0"
 USER NAME = JJK

F.A.I. RTE.	SECTION	COUNTY	TOTAL SHEETS	SHEET NO.
57	(38-3,38-5)L	IRROQUOIS	16	6
STA.		TO STA.		
FED. ROAD DIST. NO.	ILLINOIS	FED. AID PROJECT		

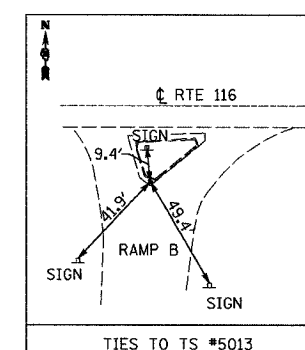
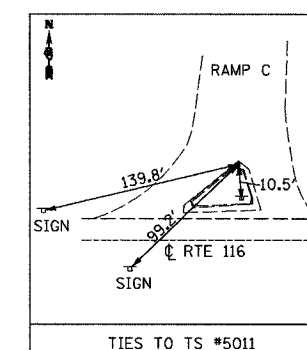
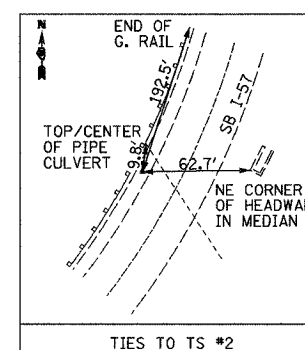
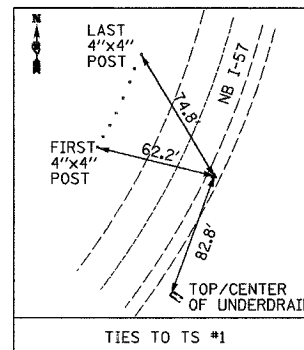
PROPOSED ALIGNMENT DATA				
ALIGNMENT		STATION	NORTHING	EASTING
GILMAN, IL				
RAMP A	BEGIN	10+00.00	1489790.8906	1074817.2944
	PC	17+96.79	1488994.9371	1074853.6985
	PT	23+75.78	1488492.0023	1075104.8396
	PC	26+39.14	1488324.7480	1075308.2715
	PT	30+06.15	1488006.8842	1075470.2209
	END	31+65.51	1487847.8088	1075479.7397
RAMP B	BEGIN	20+00.00	1487849.1845	1075502.7304
	PC	22+33.56	1487625.3303	1075436.1003
	PT	24+61.39	1487432.5854	1075319.3257
	PC	27+24.48	1487249.3130	1075130.5749
	PT	32+56.80	1486774.0467	1074921.5254
	END	38+54.47	1486176.5850	1074905.5140
RAMP C	BEGIN	30+00.00	1489436.6893	1074693.0460
	PC	35+99.27	1488837.6538	1074676.3118
	PT	41+38.60	1488357.3723	1074462.5520
	PC	44+01.90	1488175.7445	1074271.9260
	PT	46+41.95	1487968.7300	1074155.8060
	END	48+55.95	1487761.6517	1074101.8220
RAMP D	BEGIN	40+00.00	1485892.2946	1074779.5697
	PC	47+28.21	1486619.7664	1074746.7113
	PT	53+60.59	1487121.9203	1074495.2541
	PC	55+69.96	1487289.0419	1074291.7004
	PT	59+33.71	1487603.5374	1074129.7343
	END	60+93.47	1487762.9305	1074118.9131
I-57	BEGIN	551+51.86	1497387.3359	1074567.5035
	END	669+12.78	1485629.3560	1074851.9500
ASHKUM, IL				
RAMP A	BEGIN	0+00.00	1536219.0467	1086053.5875
	PC	8+65.19	1537083.0123	1086007.6985
	PT	11+52.25	1537364.6006	1086051.6850
	END	21+02.20	1538252.6549	1086388.9733
RAMP B	BEGIN	0+00.00	1535009.2021	1084645.9434
	PC	2+85.89	1535211.7378	1084847.7338
	PT	4+92.60	1535363.8010	1084987.6602
	PC	6+74.37	1535502.3383	1085105.3364
	PT	11+04.60	1535725.3463	1085465.1195
	PC	13+70.14	1535789.2704	1085722.8499
	PT	17+50.72	1536018.9260	1086011.7163
	END	19+78.91	1536222.3203	1086115.1666
RAMP C	BEGIN	0+00.00	1537627.2664	1086014.1197
	PC	6+72.59	1537016.4705	1085732.5038
	PT	12+00.57	1536662.9697	1085357.7220
	PC	14+66.94	1536565.7547	1085109.7248
	PT	17+89.59	1536353.6729	1084876.0185
	END	20+16.94	1536151.0291	1084772.9466
RAMP D	BEGIN	0+00.00	1536154.3070	1084834.6065
	PC	6+42.70	1535516.3451	1084756.7273
	PCC	10+78.11	1535128.3626	1084575.4978
	PT	15+33.73	1534799.3099	1084260.2787
	END	20+27.61	1534446.6401	1083914.6238
IL 116	BEGIN	645+00.00	1536109.6297	1083993.4191
	END	675+00.00	1536268.7419	1086989.1967
I-57	BEGIN	100+00.00	1538920.7216	1086596.6641
	PC	122+31.02	1536851.3241	1085762.9687
	END	145+93.74	1534900.8363	1084459.3728

CALC BY: JLF - CHECK BY: JJK

Alignment.s2a



GILMAN TIES



ASHKUM TIES

REVISIONS	
NAME	DATE

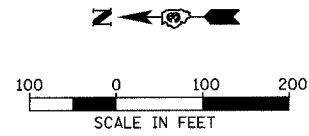
ILLINOIS DEPARTMENT OF TRANSPORTATION
FAI ROUTE 57

SURVEY TIES

SCALE: VERT. NO SCALE
HORIZ. DATE: 12/13/06
DRAWN BY: JJK
CHECKED BY: JLF

PLOT TIME = 4:28:47 PM
PLOT DATE = 12/21/2006
FILE NAME = X:\CH\12\2006\060888\Plans\I-57\exchange Plans\alignment ties\gilman.dgn
USER = JLF
DATE = 12/21/06

F.A.I. RTE.	SECTION	COUNTY	TOTAL SHEETS	SHEET NO.
57	(38-3,38-51L	JROQUOIS	16	7
STA. TO STA.		FED. ROAD DIST. NO. ILLINOIS FED. AID PROJECT		

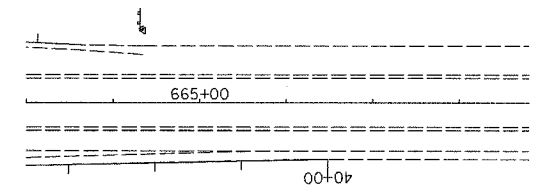
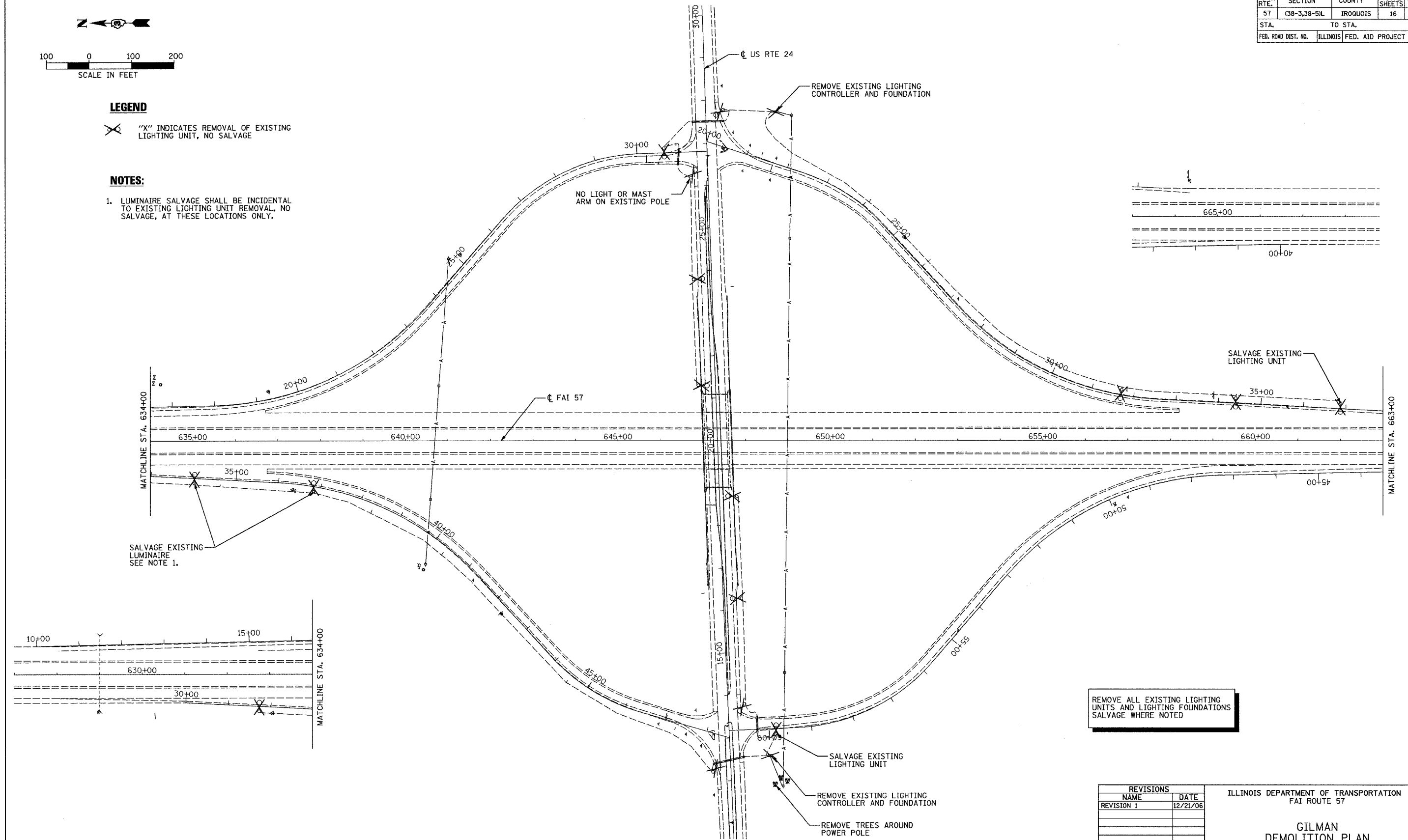


LEGEND

X "X" INDICATES REMOVAL OF EXISTING LIGHTING UNIT, NO SALVAGE

NOTES:

1. LUMINAIRE SALVAGE SHALL BE INCIDENTAL TO EXISTING LIGHTING UNIT REMOVAL, NO SALVAGE, AT THESE LOCATIONS ONLY.



REMOVE ALL EXISTING LIGHTING UNITS AND LIGHTING FOUNDATIONS SALVAGE WHERE NOTED

REVISIONS	
NAME	DATE
REVISION 1	12/21/06

ILLINOIS DEPARTMENT OF TRANSPORTATION
FAI ROUTE 57

**GILMAN
DEMOLITION PLAN**

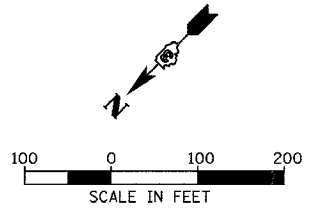
SCALE: VERT. 1"=100'-0"
HORIZ. 1"=100'-0"

DATE: 12/13/06

DRAWN BY: JDK
CHECKED BY: JLF

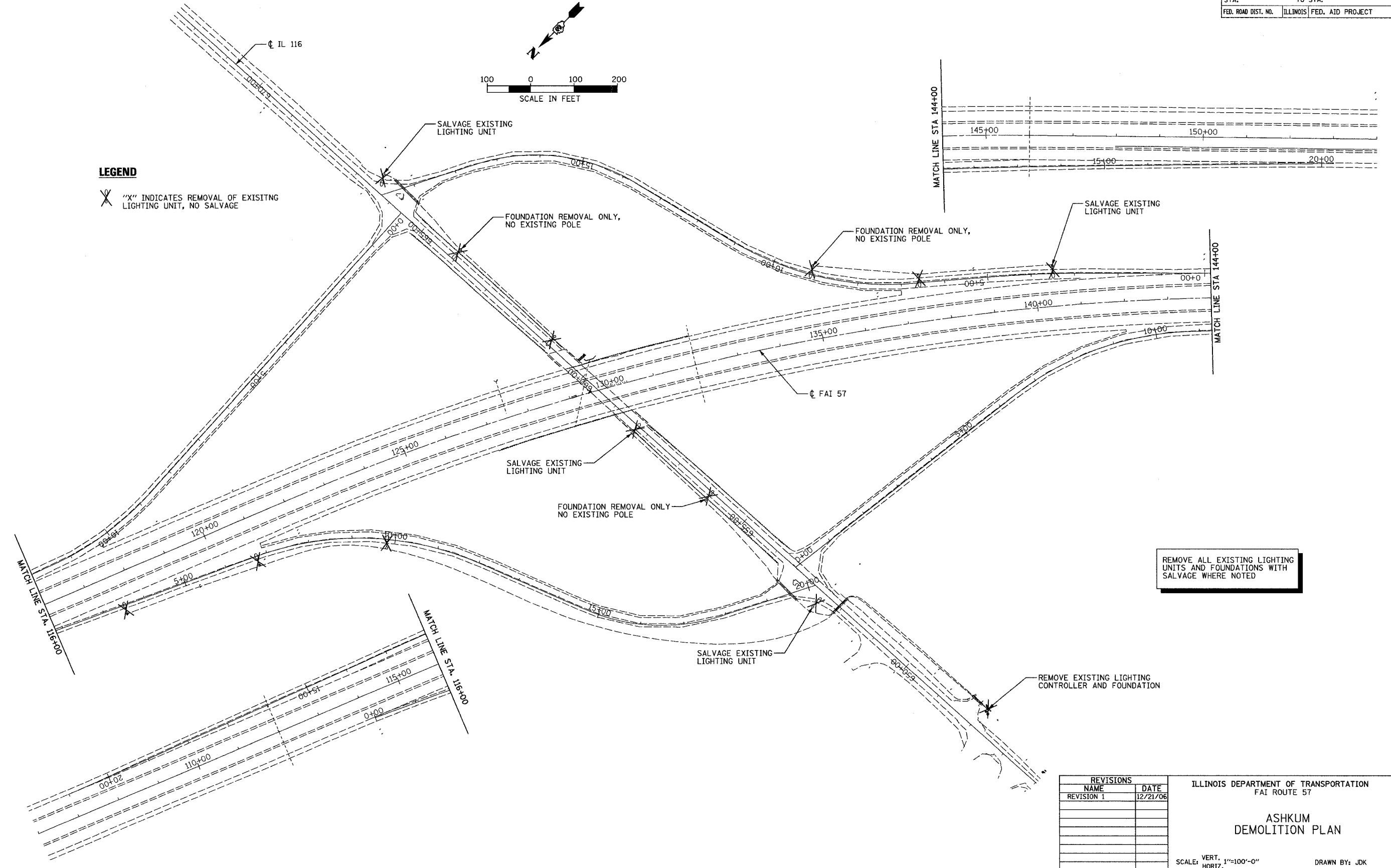
PLOT TIME = 0:05:51 PM
PLOT DATE = 12/21/06
FILE NAME = X:\CHANCE\2006\66685\PI\plan17.dwg
PLOT SCALE = 1/8"=1'-0"
USER NAME = JLF

F.A.I. RTE.	SECTION	COUNTY	TOTAL SHEETS	SHEET NO.
57	(38-3,38-5)L	JROQUOIS	16	8
STA.		TO STA.		
FED. ROAD DIST. NO.		ILLINOIS FED. AID PROJECT		



LEGEND

X "X" INDICATES REMOVAL OF EXISTING LIGHTING UNIT, NO SALVAGE



REVISIONS	
NAME	DATE
REVISION 1	12/21/06

ILLINOIS DEPARTMENT OF TRANSPORTATION
FAI ROUTE 57

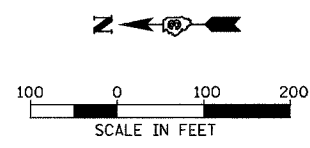
**ASHKUM
DEMOLITION PLAN**

SCALE: VERT. 1"=100'-0"
HORIZ. DATE: 12/13/06

DRAWN BY: JDK
CHECKED BY: JLF

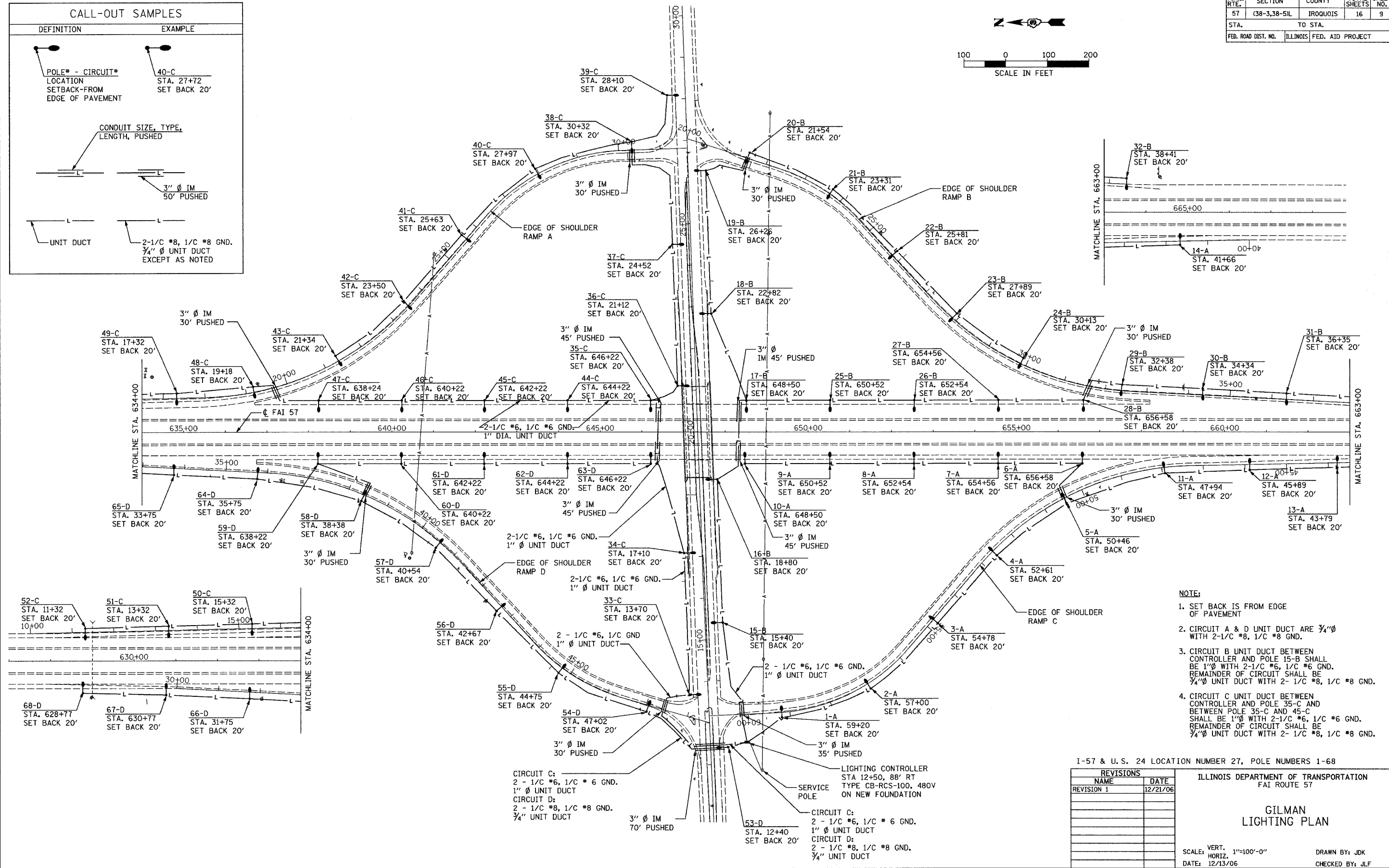
PLOT TIME = 0:00:00 PM
PLOT DATE = 12/21/06
FILE NAME = X:\CH\12\2006\66685\Plan\T\Change Plans\demolition\ashkum.dgn
PLOT SCALE = 1/8"=1'-0"
USER NAME = JLF

F.A.I. RTE.	SECTION	COUNTY	TOTAL SHEETS	SHEET NO.
57	(38-3,38-5)L	IROQUOIS	16	9
STA.		TO STA.		
FED. ROAD DIST. NO.		ILLINOIS FED. AID PROJECT		



CALL-OUT SAMPLES

DEFINITION	EXAMPLE
POLE* - CIRCUIT* LOCATION SETBACK-FROM EDGE OF PAVEMENT	40-C STA. 27+72 SET BACK 20'
CONDUIT SIZE, TYPE, LENGTH, PUSHED	3" Ø IM 50' PUSHED
UNIT DUCT	2-1/8" #8, 1/8" #8 GND. 3/4" Ø UNIT DUCT EXCEPT AS NOTED



- NOTE:**
- SET BACK IS FROM EDGE OF PAVEMENT
 - CIRCUIT A & D UNIT DUCT ARE 3/4" Ø WITH 2-1/8" #8, 1/8" #8 GND.
 - CIRCUIT B UNIT DUCT BETWEEN CONTROLLER AND POLE 15-B SHALL BE 1" Ø WITH 2-1/8" #6, 1/8" #6 GND. REMAINDER OF CIRCUIT SHALL BE 3/4" Ø UNIT DUCT WITH 2-1/8" #8, 1/8" #8 GND.
 - CIRCUIT C UNIT DUCT BETWEEN CONTROLLER AND POLE 35-C AND BETWEEN POLE 35-C AND 45-C SHALL BE 1" Ø WITH 2-1/8" #6, 1/8" #6 GND. REMAINDER OF CIRCUIT SHALL BE 3/4" Ø UNIT DUCT WITH 2-1/8" #8, 1/8" #8 GND.

I-57 & U.S. 24 LOCATION NUMBER 27, POLE NUMBERS 1-68

REVISIONS	
NAME	DATE
REVISION 1	12/21/06

ILLINOIS DEPARTMENT OF TRANSPORTATION
FAI ROUTE 57

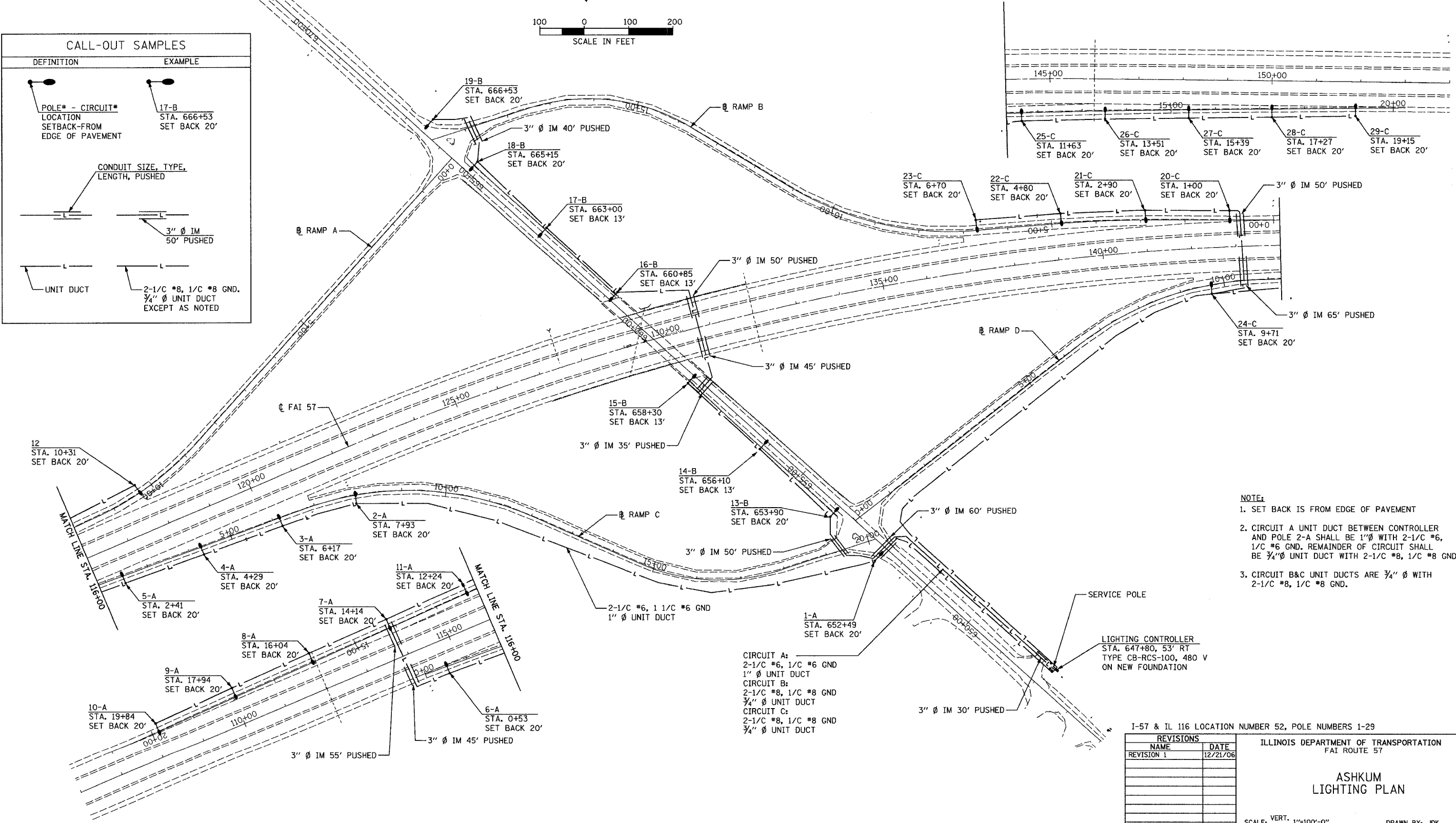
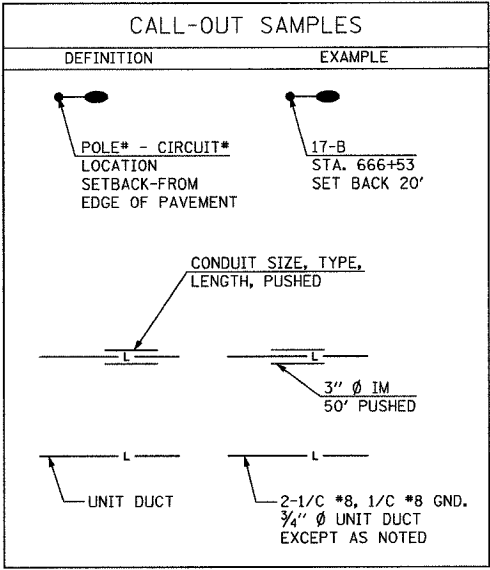
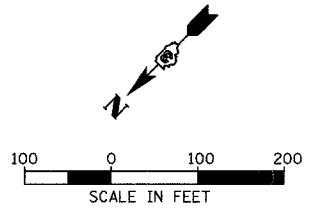
GILMAN LIGHTING PLAN

SCALE: VERT. 1"=100'-0"
HORIZ. DATE: 12/13/06

DRAWN BY: JJK
CHECKED BY: JLF

PLOT TIME = 0:09:48 PM
 PLOT DATE = 12/21/2006
 FILE NAME = X:\CHINA\2006\66685\66685\Lighting\Lighting.dgn
 PLOT SCALE = 1/8"=100' / 1"=1000'
 USER NAME = JLF

F.A.I. RTE.	SECTION	COUNTY	TOTAL SHEETS	SHEET NO.
57	(38-3,38-5)IL	JROQUOIS	16	10
STA.		TO STA.		
FED. ROAD DIST. NO.		ILLINOIS FED. AID PROJECT		



- NOTE:**
- SET BACK IS FROM EDGE OF PAVEMENT
 - CIRCUIT A UNIT DUCT BETWEEN CONTROLLER AND POLE 2-A SHALL BE 1" Ø WITH 2-1/C #6, 1/C #6 GND. REMAINDER OF CIRCUIT SHALL BE 3/4" Ø UNIT DUCT WITH 2-1/C #8, 1/C #8 GND.
 - CIRCUIT B&C UNIT DUCTS ARE 3/4" Ø WITH 2-1/C #8, 1/C #8 GND.

CIRCUIT A:
2-1/C #6, 1/C #6 GND
1" Ø UNIT DUCT
CIRCUIT B:
2-1/C #8, 1/C #8 GND
3/4" Ø UNIT DUCT
CIRCUIT C:
2-1/C #8, 1/C #8 GND
3/4" Ø UNIT DUCT

1-57 & IL 116 LOCATION NUMBER 52, POLE NUMBERS 1-29

REVISIONS	
NAME	DATE
REVISION 1	12/21/06

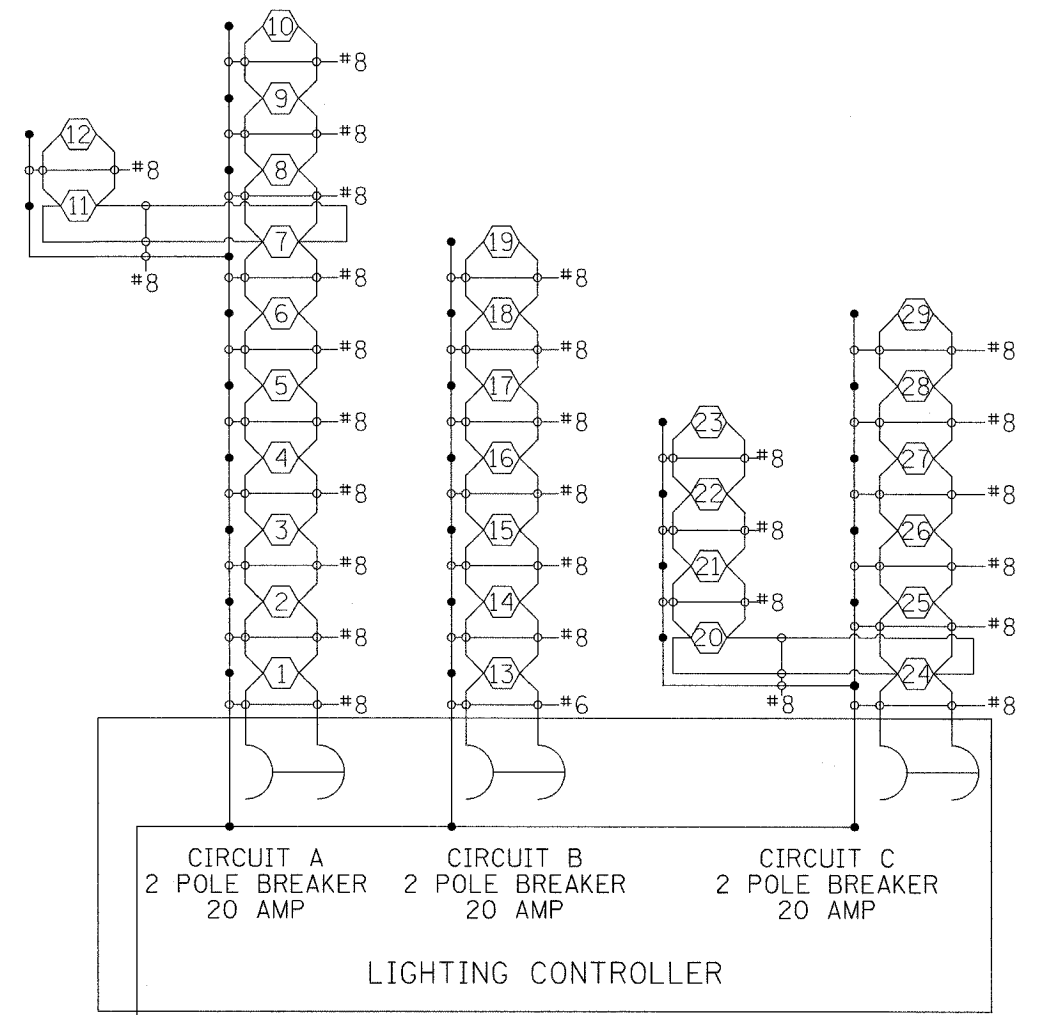
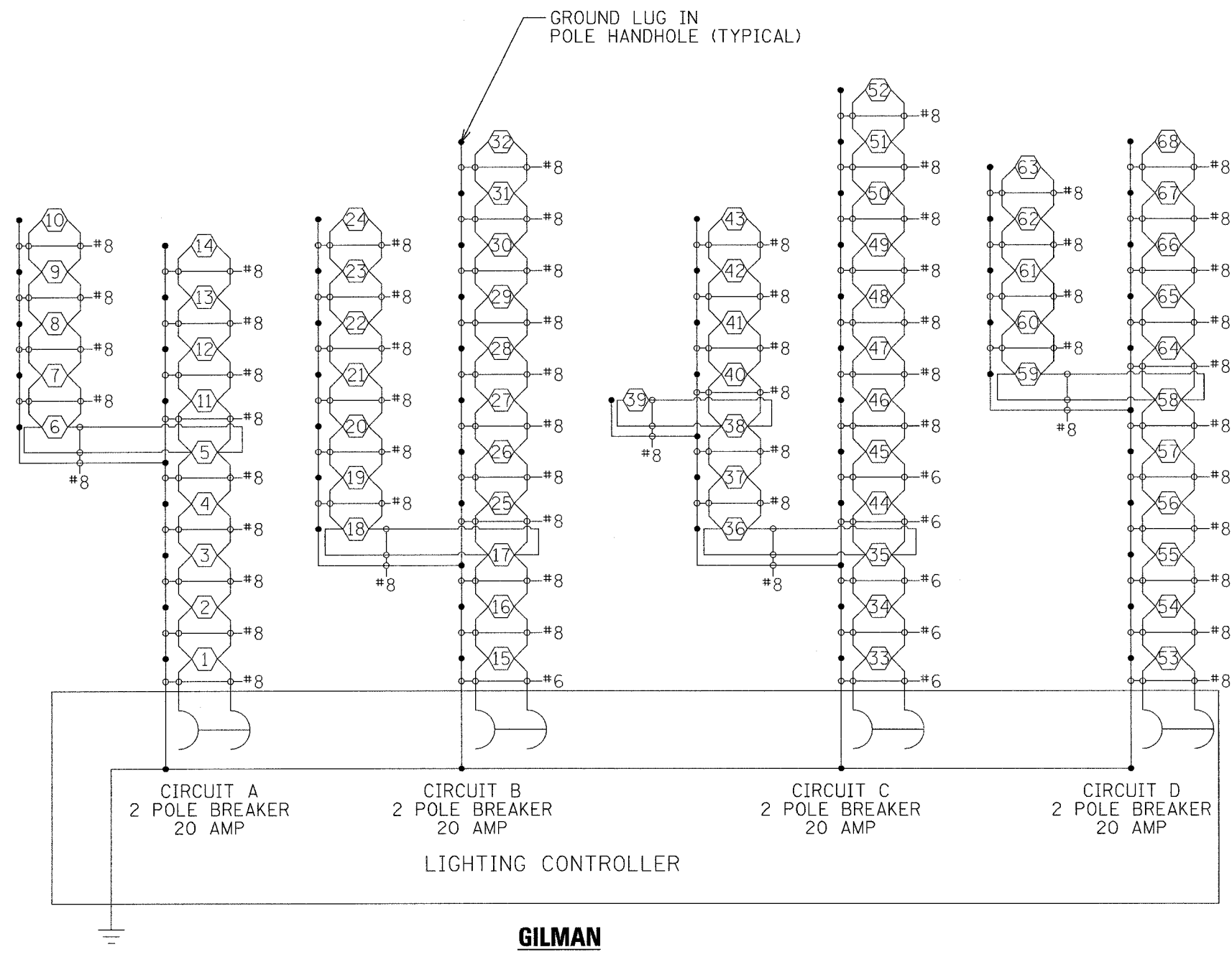
ILLINOIS DEPARTMENT OF TRANSPORTATION
FAI ROUTE 57

ASHKUM LIGHTING PLAN

SCALE: VERT. 1"=100'-0"
HORIZ. DATE: 12/13/06

DRAWN BY: JJK
CHECKED BY: JLF

PLOT TIME = 2:46:09 PM
 PLOT DATE = 12/21/2006
 FILE NAME = X:\CHANCE\2006\06\066\PI\plan17.mxd
 PLOT SCALE = 1/8"=1'-0"
 USER NAME = JLF



REVISIONS	
NAME	DATE
REVISION 1	12/21/06
REVISION 2	12/26/06

ILLINOIS DEPARTMENT OF TRANSPORTATION
FAI ROUTE 57

CIRCUIT DIAGRAM

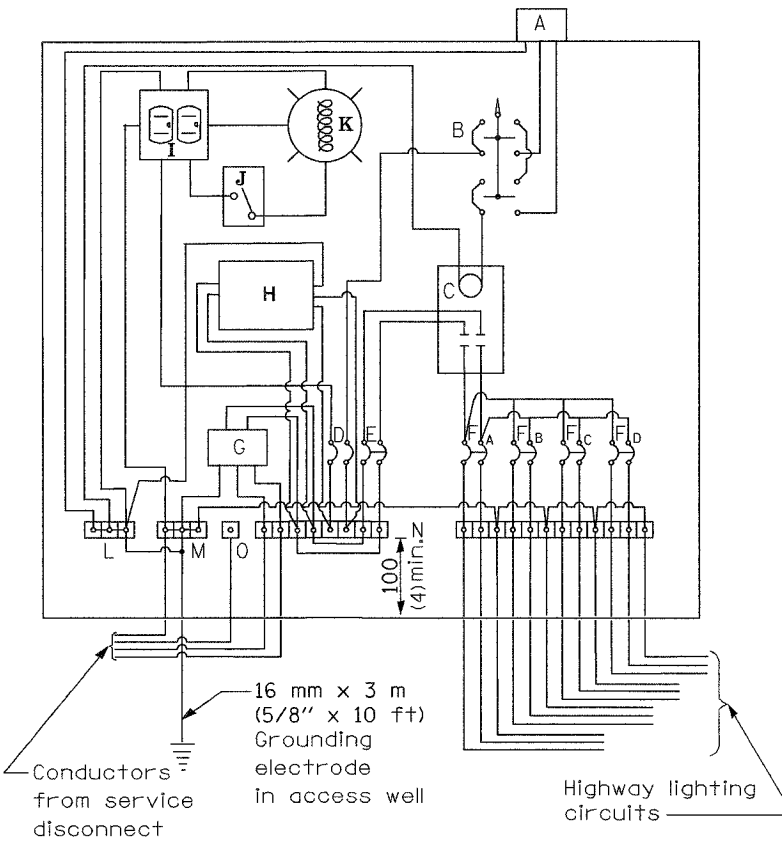
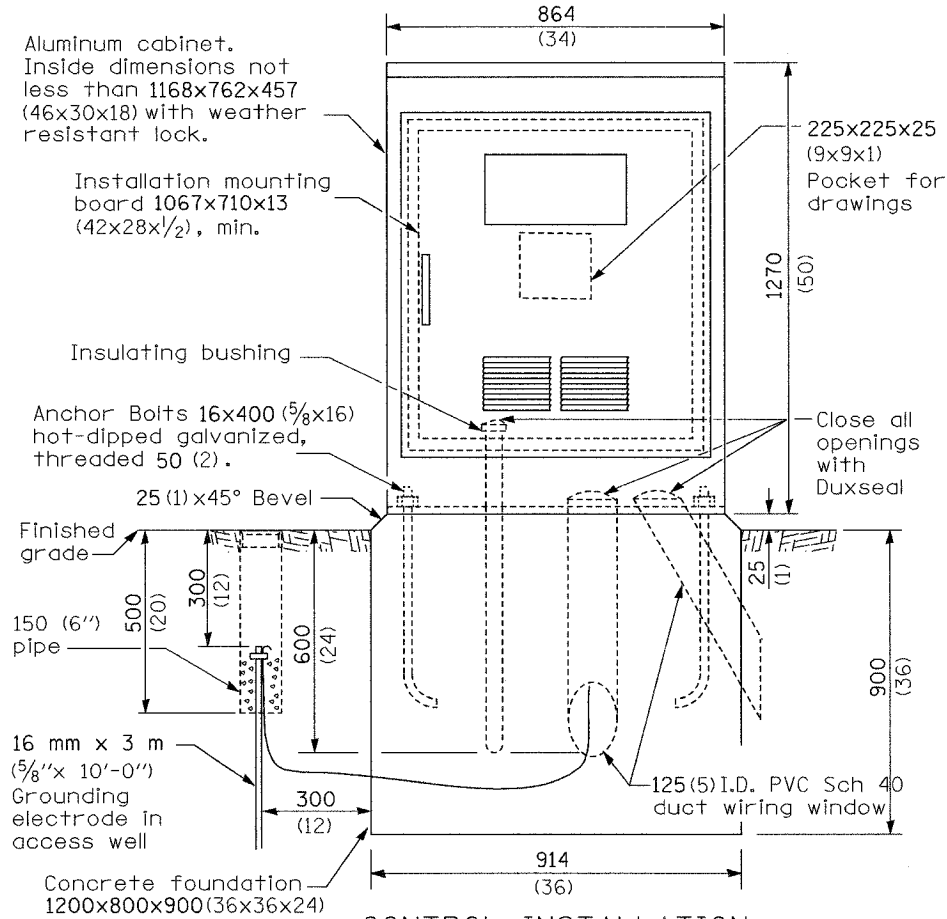
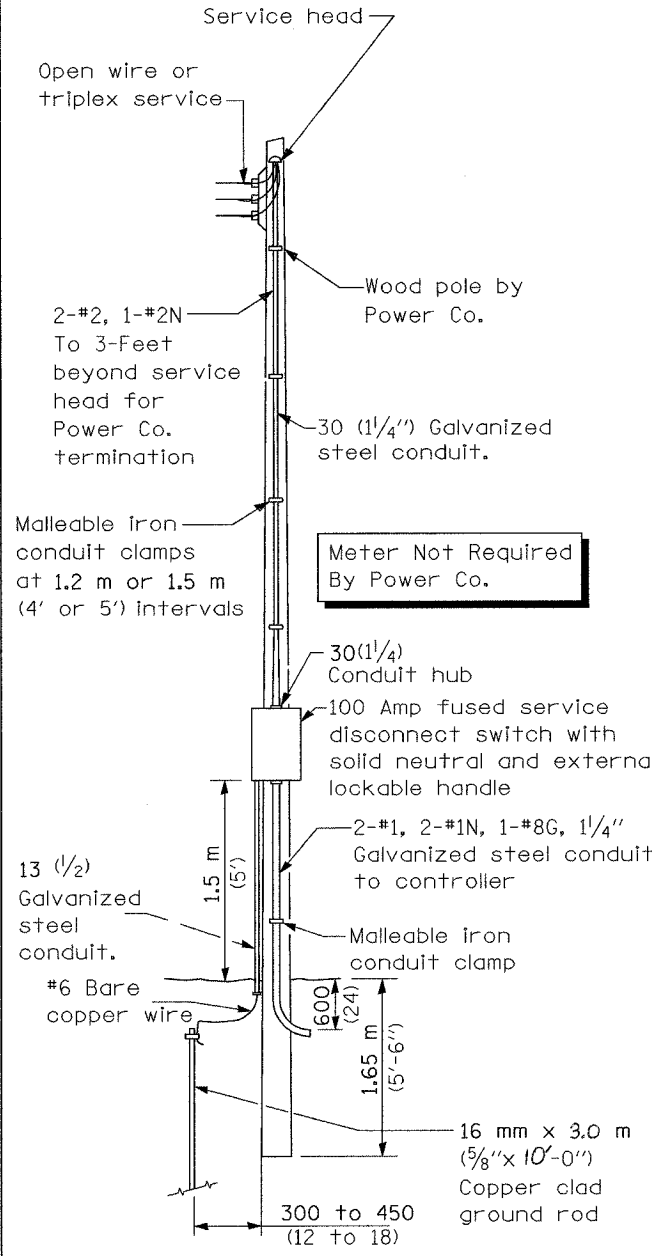
SCALE: VERT. NO SCALE
HORIZ. NO SCALE

DATE: 12/13/06

DRAWN BY: JJK
CHECKED BY: JLF

PLOT TIME = 2:29:53 PM
PLOT DATE = 12/26/06
FILE NAME = K:\CH\122606\061008\Plan\11.dwg
PLOT SCALE = 1:10000 / IN.
USER NAME = JLF

F.A.I. RTE.	SECTION	COUNTY	TOTAL SHEETS	SHEET NO.
57	(38-3,38-5)IL	JROQUOIS	16	13
STA.		TO STA.		
FED. ROAD DIST. NO.		ILLINOIS FED. AID PROJECT		



- MATERIALS**
- A Photocell w/ integral surge arrester
 - B 3 position selector switch HAND-OFF-AUTO
 - C 100 amp electrically held contactor, 120V operating coil
 - D 15 amp 1 pole, circuit breaker
 - E 100 amp, 2 pole, main circuit breaker
 - F 20 amp, 2 pole, branch circuit breaker (typ), 2 spare c.b. required but not shown
 - G Surge arrester
 - H Transformer, 1 KVA*, 240/480V primary, 120/240V sec, single phase with Primary and secondary fuses
 - I GFCI duplex receptacle
 - J Single pole, single throw switch
 - K Shielded security fixture with 100W lamp
 - L Neutral bar
 - M Equipment ground bar
 - N Terminal block (typ)
 - O Isolated (insulated from ground) neutral lug
- (* = Size larger as needed)

GENERAL NOTES

Locate service pole and control installation adjacent to R.O.W. line with a minimum distance of 9 m (30') from the edge of pavement. Locate in close proximity to the utility transformer so the service drop does not exceed 46 m (150ft) and the total distance of overhead and underground cable (utility transformer to lighting controller) does not exceed 76 m (250ft). Exact location shall be established by the Engineer.

Wiring shall be panel board fashion. All bends shall be right angles. All runs shall vertical or parallel to panel board. Wires shall be grouped or laced.

All control installation components shall be U.L. listed.

Raceways shall terminate 75 (3) above top of concrete foundation.

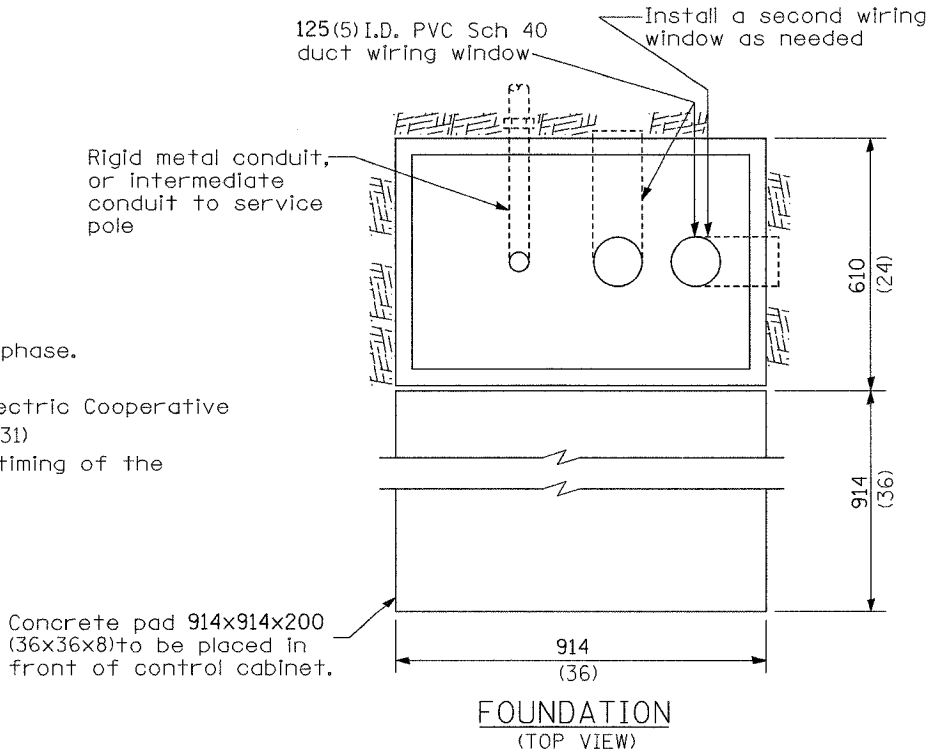
Label equipment ground buss and neutral buss.

All dimensions are in millimeters (Inches) unless otherwise shown.

480 V. SERVICE

- NOTES:**
- The service shall be 100-amp, 480 volt, single phase.
 - The contractor shall contact Eastern Illini Electric Cooperative (Brad Weisenbarn or Mike Anderson, 217-379-2131) and coordinate both the work required and timing of the installation with the electric utility.

SERVICE POLE



REVISIONS		
NAME	DATE	
REVISION 1	12/21/06	
REVISION 2	12/26/06	

ILLINOIS DEPARTMENT OF TRANSPORTATION
FAT ROUTE 57

CONTROLLER DETAILS

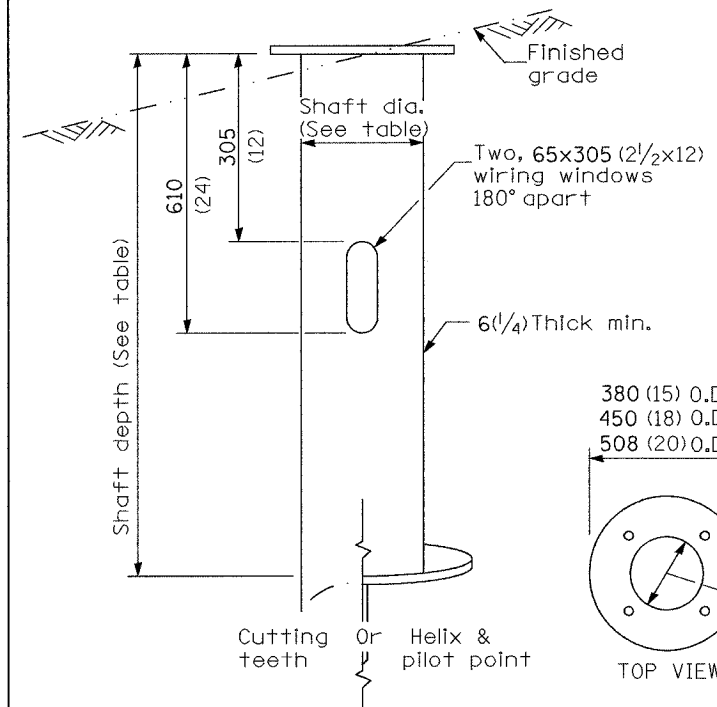
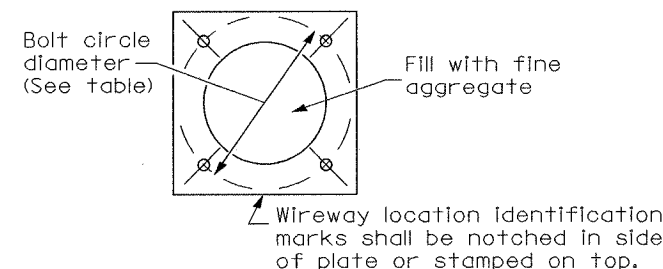
SCALE: VERT. NO SCALE
HORIZ. DATE: 12/13/06
DRAWN BY: JDK
CHECKED BY: DAR

PLOT TIME = 22:06:44 PM
 PLOT DATE = 12/21/06
 FILE NAME = X:\CHIEF\2006\66685\Plan\1\13.dwg
 PLOT SCALE = 80.21928 m / IN.
 USER NAME = JDT

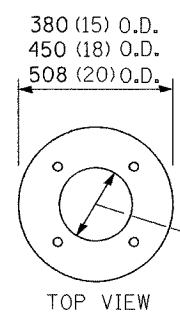
F.A.I. RTE.	SECTION	COUNTY	TOTAL SHEETS	SHEET NO.
57	(38-3,38-5IL)	IROQUOIS	16	14
STA.		TO STA.		
FED. ROAD DIST. NO.		ILLINOIS FED. AID PROJECT		

LIGHT POLE MOUNTING HEIGHT	BOLT CIRCLE DIAMETER	STEEL FOUNDATION			CONCRETE FOUNDATION		
		SHAFT DIAMETER	SHAFT DEPTH	TOP PLATE (min)	SHAFT DIAMETER	SHAFT DEPTH	ANCHOR ROD LENGTH ①
< 9.1 m (30')	292 (11.5)	220 (8 3/4)	1.83 m (6')	300 x 300 x 25 12 x 12 x 1	610 (24)	1.52 m (5'-0")	1.45 m (4'-9")
9.4 m - 10.7 m (31'-35')	292 (11.5)	220 (8 3/4)	1.83 m (6')	300 x 300 x 25 12 x 12 x 1	610 (24)	1.67 m (5'-6")	1.60 m (5'-3")
10.9 m - 12.2 m (36'-40')	381 (15) ③	220 (8 3/4)	1.83 m (6') ②	375 x 375 x 31 15 x 15 x 1 1/4	762 (30)	1.83 m (6'-0")	1.75 m (5'-9")
12.5 m - 13.7 m (41'-45')	381 (15) ③	220 (8 3/4)	1.83 m (6') ②	375 x 375 x 31 15 x 15 x 1 1/4	762 (30)	1.98 m (6'-6")	1.90 m (6'-3")
14.0 m - 15.2 m (46'-50')	381 (15) ③	220 (8 3/4)	2.44 m (8')	375 x 375 x 31 15 x 15 x 1 1/4	762 (30)	2.13m (7'-0")	2.00 m (6'-9")

- ① Length does not include 100(4)hook
- ② 220 mm x 2.44 m (8 3/4" x 8'-0") for Twin luminaires
- ③ Bolt circle diam. shall be 430 (17) when a TB3-17 transformer base is used



STEEL FOUNDATION



RING PLATE DETAIL
(When rock is encountered and foundation is shallower)

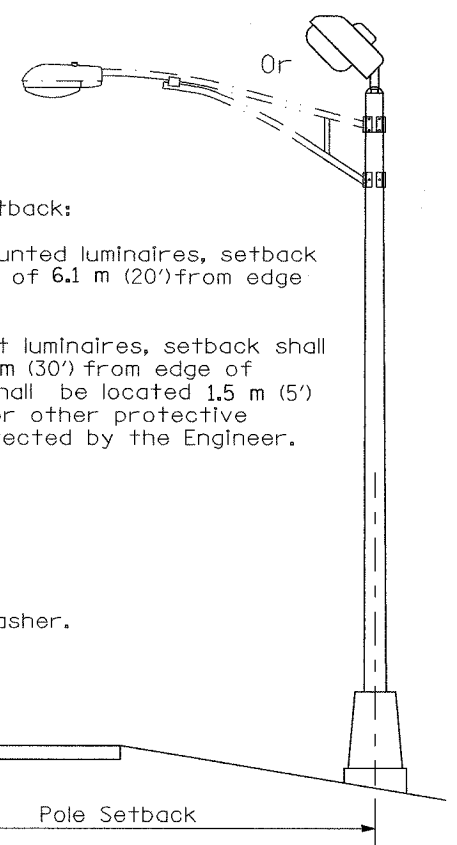
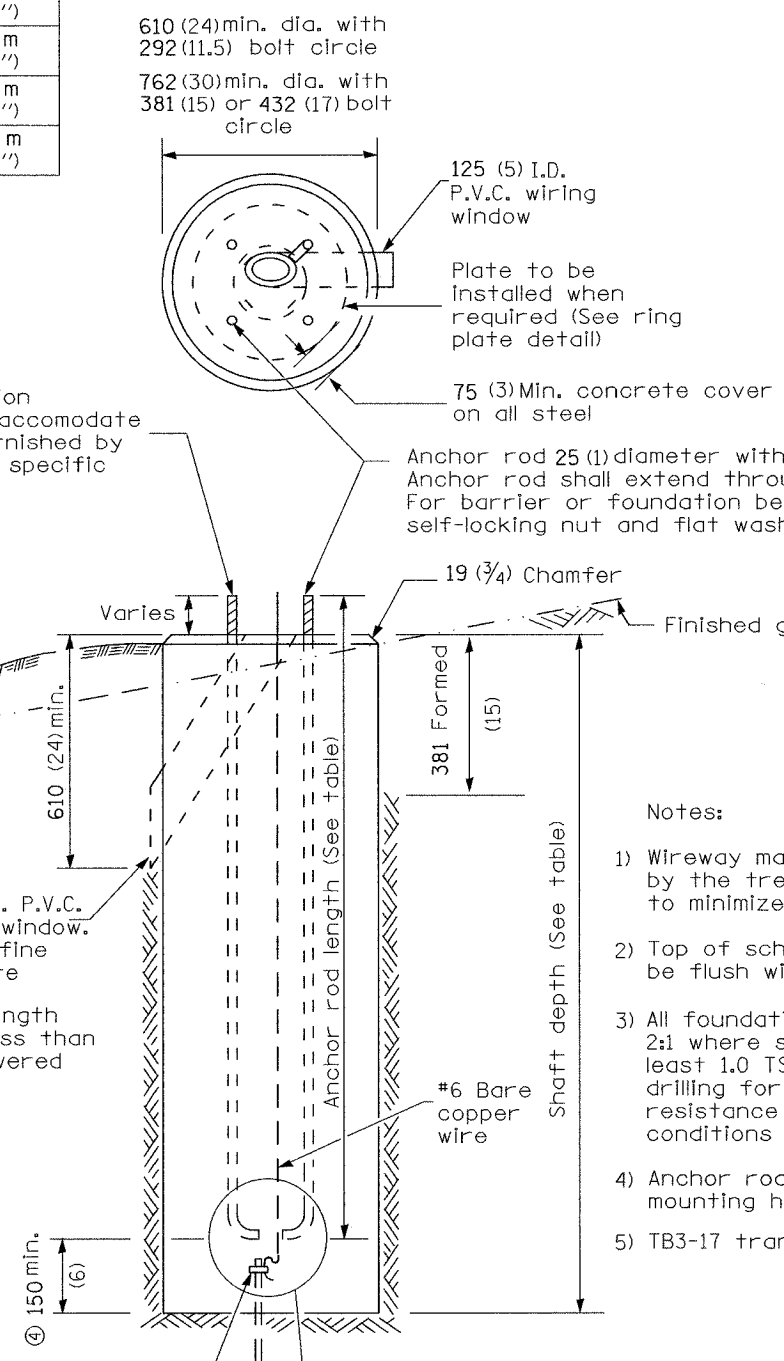
Length above foundation shall be adjusted to accommodate breakaway devices furnished by the contractor for a specific installation.

Use dirt removed from foundation to meet 1.52m (5 ft.) chord fill around foundation top. Grade dirt level with bottom of concrete chamfer.

④ If the required anchor rod length above top of foundation is less than 75 (3), anchor rods may be lowered below 150 (6).

Cast bronze clamp
16 mm x 3 m (5/8" x 10') Copperclad grounding electrode. When foundation is set in rock, install ground electrode in cable trench.

CONCRETE FOUNDATION



Notes:

- 1) Wireway may be on front, back or side of foundation as required by the trenching. Place door of transformer base on wireway side to minimize the number of unit duct bends.
- 2) Top of schedule 40 125 (5) I.D. PVC wiring window, shall be flush with the top of foundation for drainage.
- 3) All foundations are designed to be located on slopes not exceeding 2:1 where soils have an unconfined compressive strength of at least 1.0 TSF. The contractor shall verify the soil strength during drilling for concrete foundations or by monitoring installation resistance on steel foundations and notify the engineer if other conditions are encountered.
- 4) Anchor rod shall be increased to 31 (1 1/4) diameter for 15.24 (50') mounting height or above.
- 5) TB3-17 transformer base is not to be used on metal foundation

All dimensions are in millimeters (inches) unless otherwise shown.

DATE	REVISIONS
10/7/02	Bridge Office depth calc.

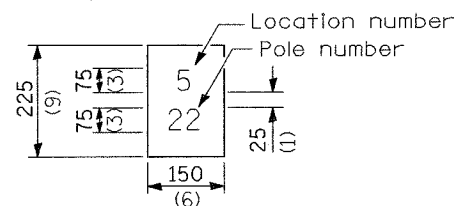
LIGHT POLE FOUNDATION

LGT007-836

F.A.I. RTE.	SECTION	COUNTY	TOTAL SHEETS	SHEET NO.
57	(38-3,38-5L)	IROQUOIS	16	15
STA.		TO STA.		
FED. ROAD DIST. NO.		ILLINOIS FED. AID PROJECT		

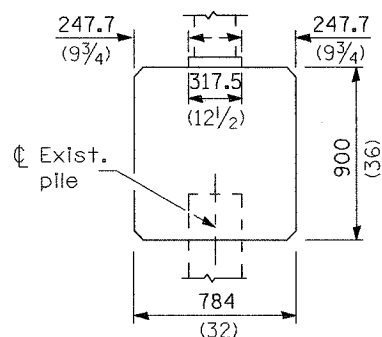
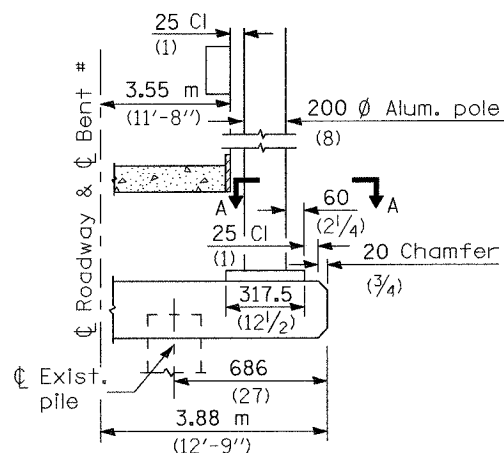
"Install and orient arm bracket over pole tenon and firmly hand tighten the two set screws. Use third hole in arm bracket as a guide to drill a 8.3 (2 3/4) diameter hole through tenon. Install and tighten self-tapping screw. Tighten set screws an additional 1/4 to 3/8 turn with hex key (not provided). Install locknuts on set screws if threaded projection allows."

Pole shall meet AASHTO Standard Specifications for 128.72 km (80 mph) wind loading and 40.82 kg (90 lb.), .37 m² (4.0 sq. ft.) E.P.A. luminaire.

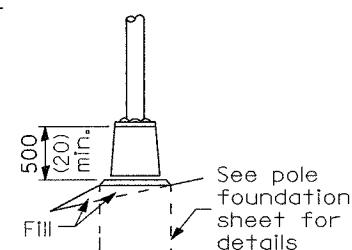
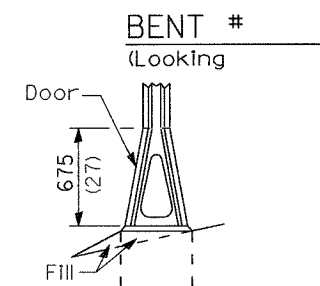


The contractor shall furnish and install a light pole identification of each new light pole, as shown above, incidental to the respective light pole pay item. The numerals shall be 75 (3) series "D", black, screened on silver-white type B pressure sensitive reflective sheeting conforming to the requirements of section T602.01 of the Standard Specifications for Traffic Control Items. The numerals shall conform to the FHWA "Standard Alphabets for Highway Signs".

The light pole identification shall be applied to sign base material as specified in section 1085.05 of the Standard Specifications, approximately 180 (7) above the adjacent pavement grade visible to approaching traffic in accordance with Highway Standard 2319.

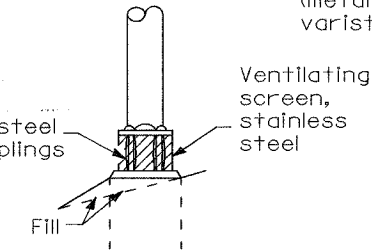


BRIDGE PIER MOUNT

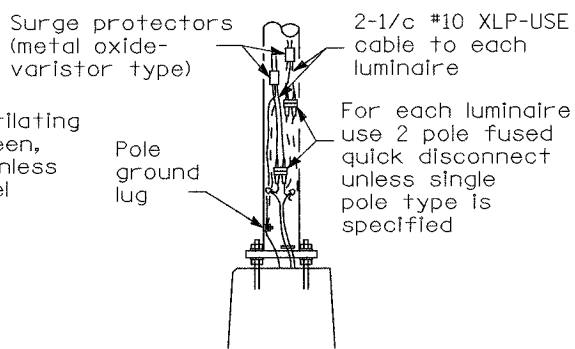


STAINLESS STEEL FLAIR BASE

TRANSFORMER BASE



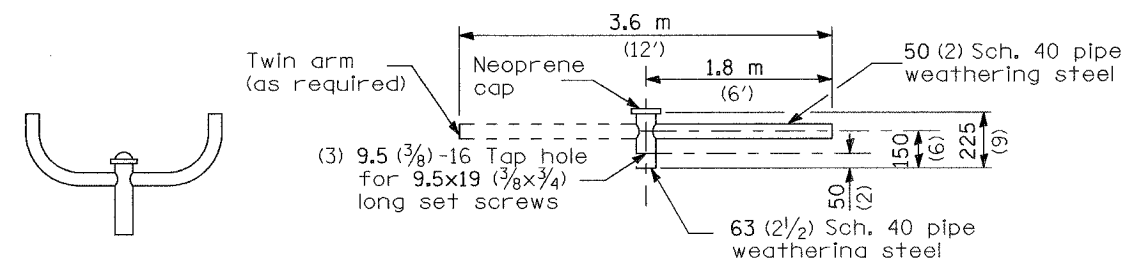
BREAKAWAY COUPLING



ANCHOR

METAL OR CONCRETE

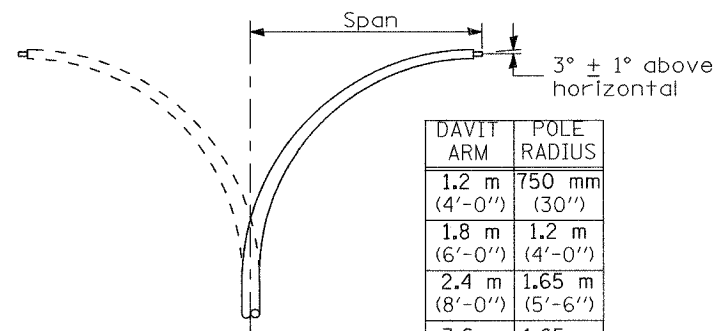
Details for underground distribution if required



TWIN TENON

TENON MOUNT BRACKET ARM

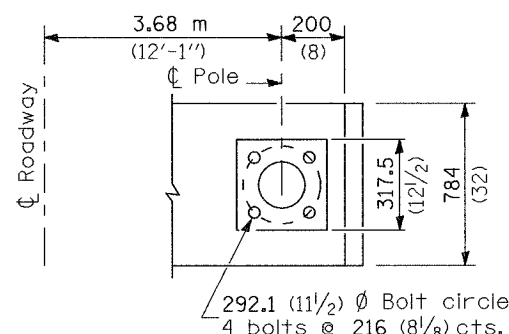
NOTE: Single or twin arm assembly shall be tilted 3° above horizontal.



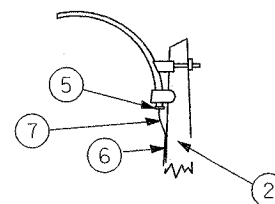
DAVIT ARM

DAVIT ARM-TWIN

DAVIT ARM	POLE RADIUS
1.2 m (4'-0")	750 mm (30")
1.8 m (6'-0")	1.2 m (4'-0")
2.4 m (8'-0")	1.65 m (5'-6")
3.6 m (12'-0")	1.65 m (5'-6")



SECTION A-A

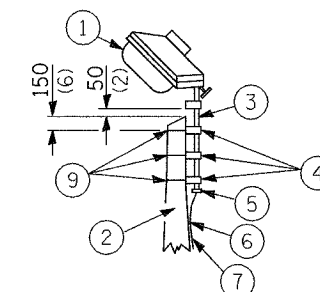


MAST ARM

- ① Luminaire
- ② Wood pole, class 3 or better
- ③ 63 (2 1/2) Galv. steel conduit
- ④ Single offset pole band
- ⑤ Conduit bushing
- ⑥ Cable clamps on 600 (24) centers
- ⑦ 2/c #12 Type use cable
- ⑧ 25 (1) Galv. steel conduit 3.0 m (10') in length

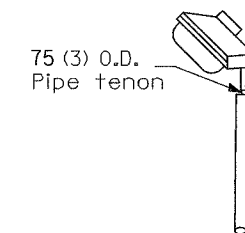
SHORT BRACKET

SHORT BRACKET - TWIN

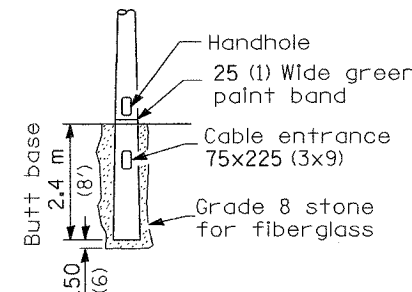


TENON

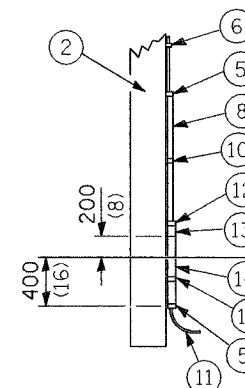
- ⑨ 16 (5/8) Ø hot dipped galvanized bolt with flat washer & locknut (3 req'd)
- ⑩ Conduit clamps on 900 (36) centers
- ⑪ Unit duct
- ⑫ Threaded reducer
- ⑬ "C" Condulet, threaded
- ⑭ 40 (1 1/2) Galv. steel conduit for 1 unit duct or 75 (3) galv. steel conduit for 2 or 3 unit ducts.



TENON



BUTT BASE



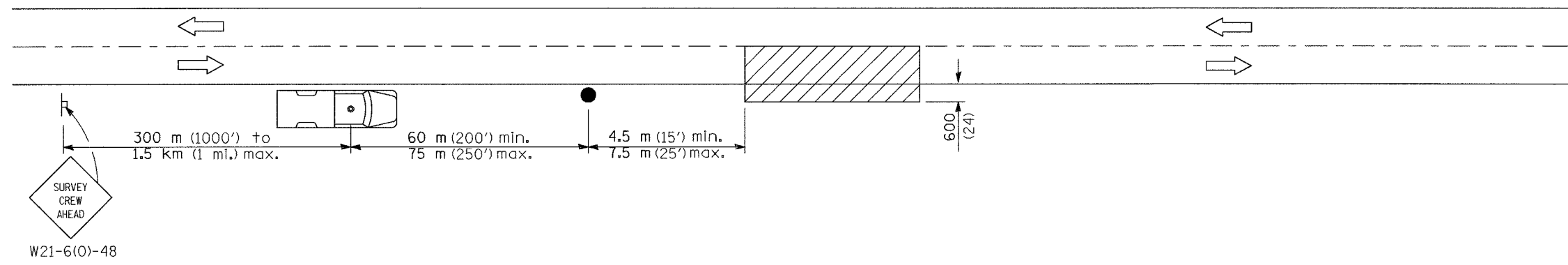
POLE, WOOD

POLE LENGTH	DEPTH IN GROUND
19.8 m (65')	3.6 m (12')
18.0 m (60')	3.0 m (10')
16.8 m (55')	2.7 m (9')
16.0 m (50')	2.4 m (8')
13.7 m (45')	2.1 m (7')
12.0 m (40')	2.0 m (6.5')
10.7 m (35')	1.8 m (6')
9.0 m (30')	1.7 m (5.5')

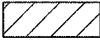

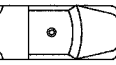

All dimensions are in millimeters (inches) unless otherwise shown.

DATE	REVISIONS

POLE STANDARDS



SYMBOLS

-  Work area
-  Sign on portable or permanent support
-  Truck with flashing amber light and dual emergency flashers
-  Flagger with traffic control sign

TYPICAL APPLICATIONS
Utility operations

All dimensions are in millimeters (inches) unless otherwise shown.

DATE	REVISIONS

DETAIL FOR
NIGHTTIME LIGHTING
INSPECTION