

F.A.P. RTE.	SECTION	COUNTY	TOTAL SHEETS	SHEET NO.
316	(116) I	BUREAU	6	3
STA.		TO STA.		
FED. ROAD DIST. NO. _		ILLINOIS FED. AID PROJECT		



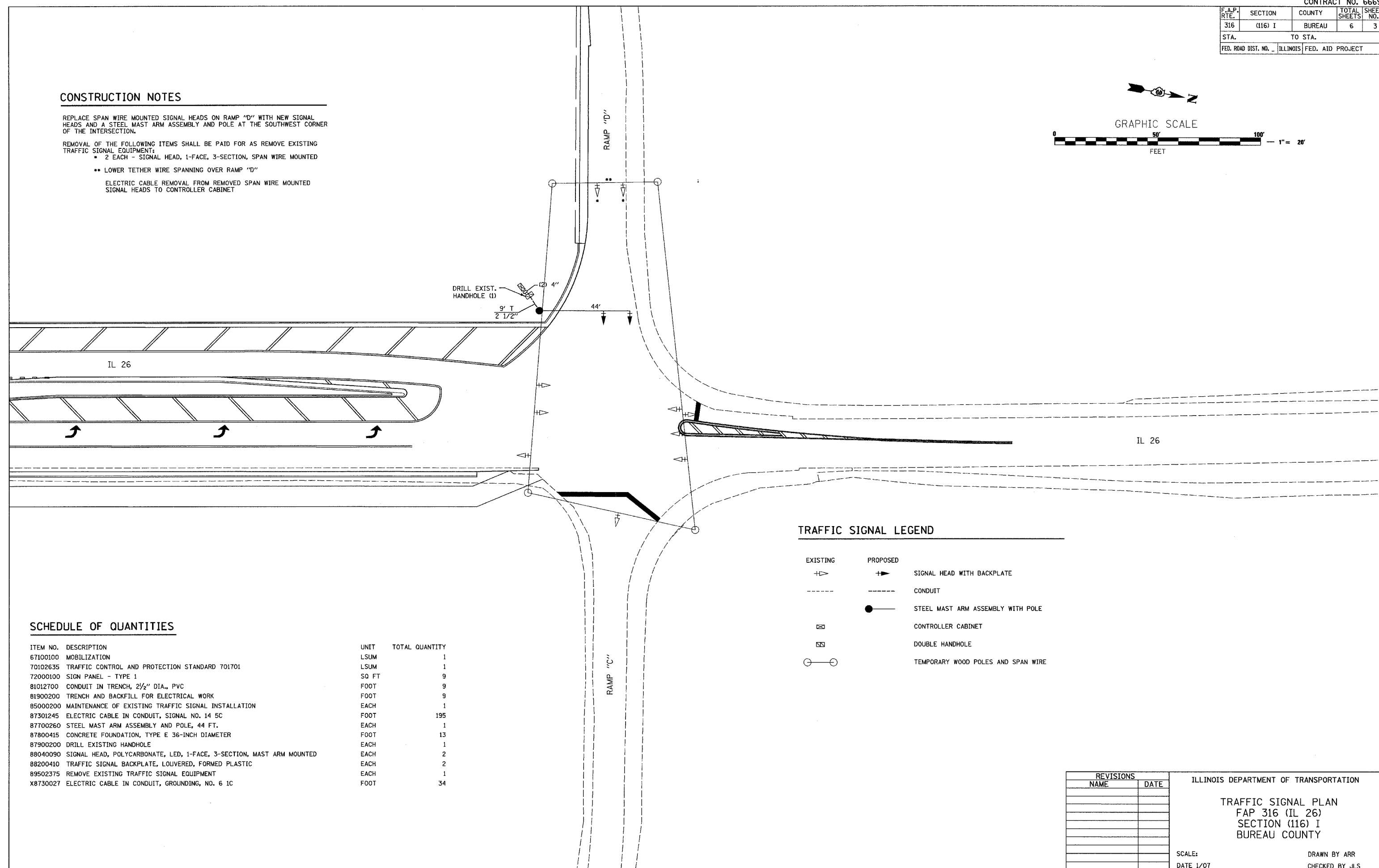
**CONSTRUCTION NOTES**

REPLACE SPAN WIRE MOUNTED SIGNAL HEADS ON RAMP "D" WITH NEW SIGNAL HEADS AND A STEEL MAST ARM ASSEMBLY AND POLE AT THE SOUTHWEST CORNER OF THE INTERSECTION.

REMOVAL OF THE FOLLOWING ITEMS SHALL BE PAID FOR AS REMOVE EXISTING TRAFFIC SIGNAL EQUIPMENT:

- 2 EACH - SIGNAL HEAD, 1-FACE, 3-SECTION, SPAN WIRE MOUNTED
- LOWER TETHER WIRE SPANNING OVER RAMP "D"

ELECTRIC CABLE REMOVAL FROM REMOVED SPAN WIRE MOUNTED SIGNAL HEADS TO CONTROLLER CABINET



**TRAFFIC SIGNAL LEGEND**

<b>EXISTING</b>	<b>PROPOSED</b>	
△	▶	SIGNAL HEAD WITH BACKPLATE
---	---	CONDUIT
⊠	●	STEEL MAST ARM ASSEMBLY WITH POLE
⊠		CONTROLLER CABINET
⊠		DOUBLE HANDHOLE
○	○	TEMPORARY WOOD POLES AND SPAN WIRE

**SCHEDULE OF QUANTITIES**

ITEM NO.	DESCRIPTION	UNIT	TOTAL QUANTITY
67100100	MOBILIZATION	LSUM	1
70102635	TRAFFIC CONTROL AND PROTECTION STANDARD 701701	LSUM	1
72000100	SIGN PANEL - TYPE 1	SQ FT	9
81012700	CONDUIT IN TRENCH, 2 1/2" DIA., PVC	FOOT	9
81900200	TRENCH AND BACKFILL FOR ELECTRICAL WORK	FOOT	9
85000200	MAINTENANCE OF EXISTING TRAFFIC SIGNAL INSTALLATION	EACH	1
87301245	ELECTRIC CABLE IN CONDUIT, SIGNAL NO. 14 5C	FOOT	195
87700260	STEEL MAST ARM ASSEMBLY AND POLE, 44 FT.	EACH	1
87800415	CONCRETE FOUNDATION, TYPE E 36-INCH DIAMETER	FOOT	13
87900200	DRILL EXISTING HANDHOLE	EACH	1
88040090	SIGNAL HEAD, POLYCARBONATE, LED, 1-FACE, 3-SECTION, MAST ARM MOUNTED	EACH	2
88200410	TRAFFIC SIGNAL BACKPLATE, LOUVERED, FORMED PLASTIC	EACH	2
89502375	REMOVE EXISTING TRAFFIC SIGNAL EQUIPMENT	EACH	1
X8730027	ELECTRIC CABLE IN CONDUIT, GROUNDING, NO. 6 1C	FOOT	34

REVISIONS	
NAME	DATE

ILLINOIS DEPARTMENT OF TRANSPORTATION

TRAFFIC SIGNAL PLAN  
 FAP 316 (IL 26)  
 SECTION (116) I  
 BUREAU COUNTY

SCALE: DATE 1/07

DRAWN BY ARR  
 CHECKED BY JLS

PLOT DATE = #DATE#  
 FILE NAME = #FILE#  
 PLOT SCALE = #SCALE#  
 USER NAME = #USER#