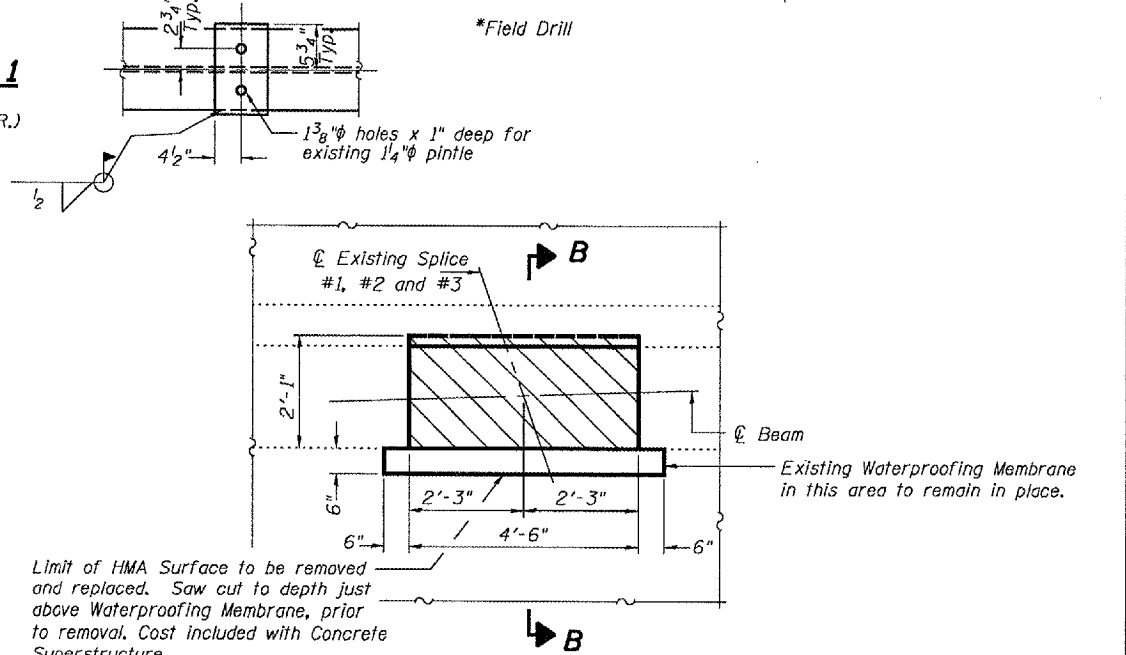
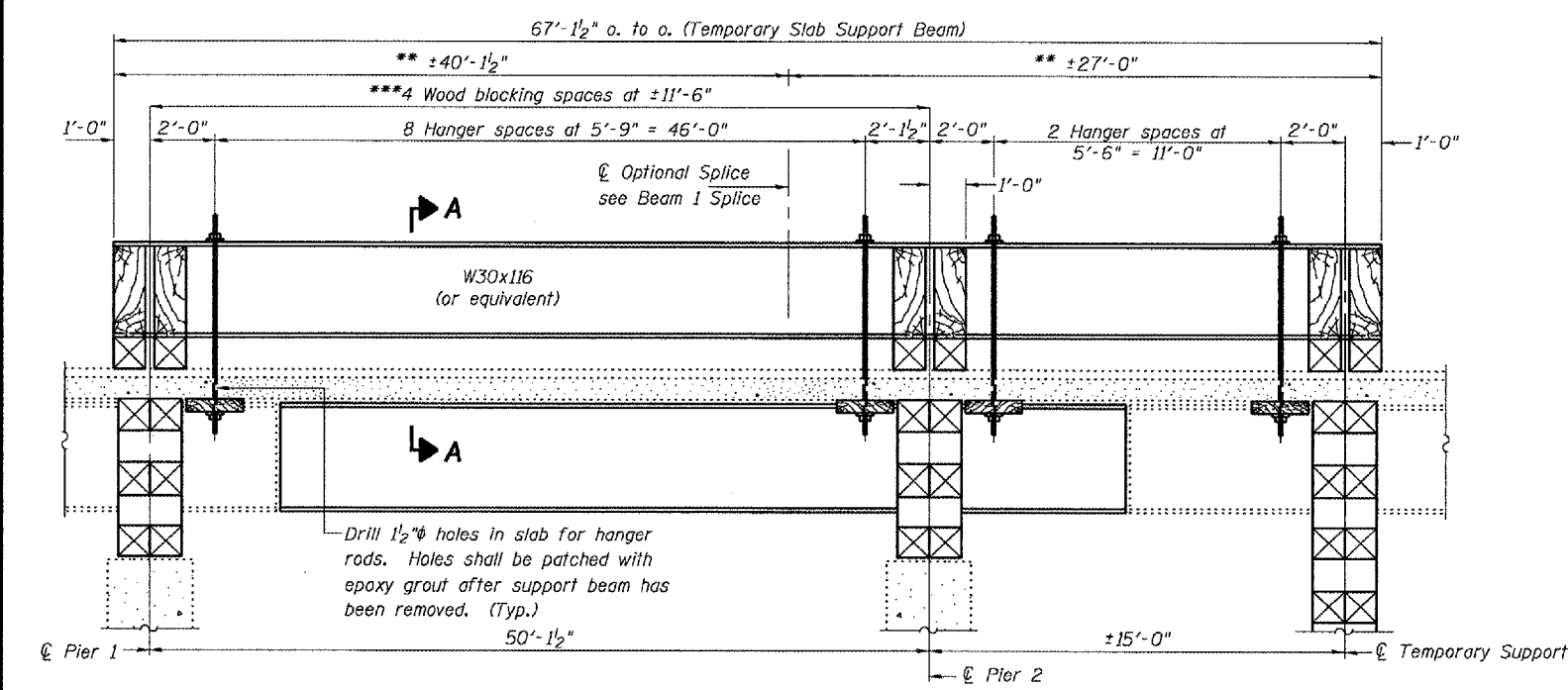
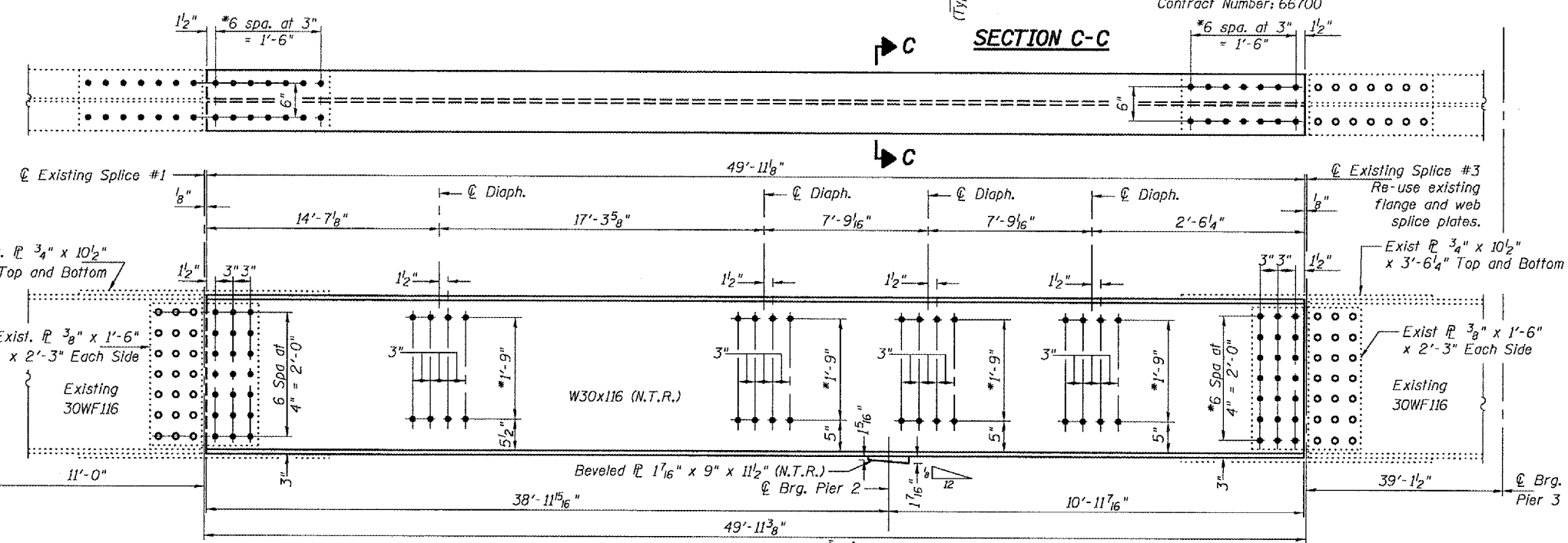
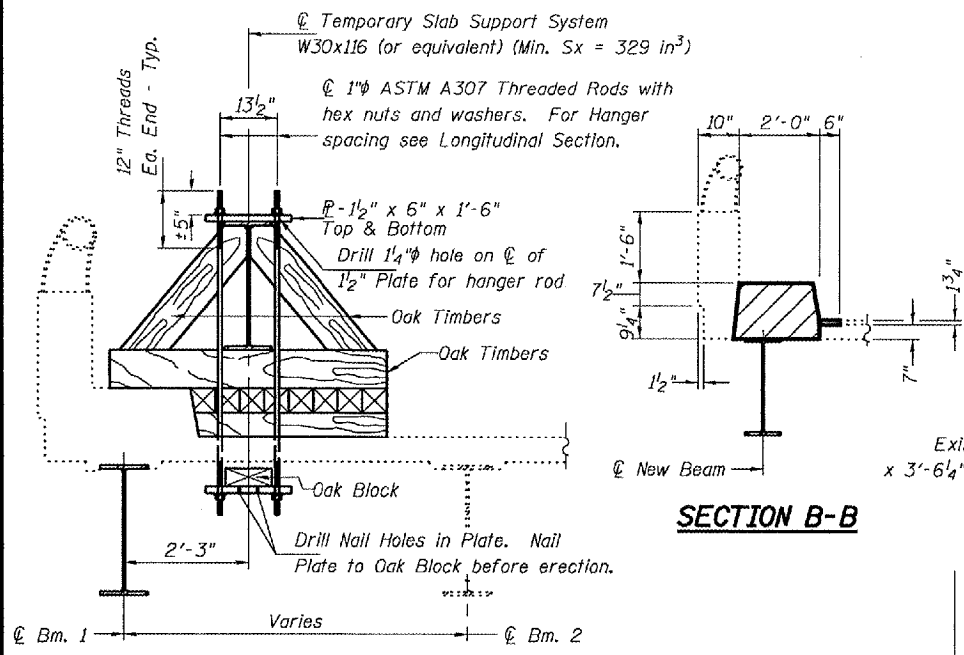


STATE OF ILLINOIS  
DEPARTMENT OF TRANSPORTATION

ROUTE NO.	SECTION	COUNTY	SHEET	SHEET	SHEET NO. 2
		Kankakee	10	10	2 SHEETS
Contract Number: 66700					



Notes:

Existing flange and web splice plates used on splice #1 & #3 shall be cleaned on the contact surface and re-used on the new beam, unless otherwise directed by the Engineer in the field.

Diaphragm connection holes shall be 1 5/16" for 3/4" bolts. Two hardened washers shall be required at diaphragm connections.

The cost of all field drilling required for installation of the steel members is included with Furnishing and Erecting Structural Steel.

Natural camber of new beam shall be placed upward for fabrication.

Existing bolts shall not be re-used.

Fasteners shall be high strength bolts. Flange splice holes shall be 1 5/16" for 7/8" bolts. Web splice holes shall be 1 5/16" for 3/4" bolts.

Load carrying components designated "NTR" shall conform to the Supplemental Requirements for Notch Toughness, Zone 2.

Hatched areas indicate concrete sections to be removed and replaced. Perimeters of concrete removal areas shall be saw cut 3/4" prior to the removal of concrete.

Reinforcement shall be cut only if required for fitting bolts. Cut reinforcement shall be spliced as directed by the Engineer. Cost shall be included with Concrete Removal.

The cost of removing and replacing the existing HMA surface, and saw cutting shall be included with Concrete Superstructures.

SUPPORT AND  
REPAIR DETAILS  
F.A.I. RT. 57 OVER IL 50  
KANKAKEE COUNTY  
SN 046-0014 (S.B.)

DESIGNED	A.J.B.	MARCH 5, 2007
CHECKED	S.J.B.	EXAMINED
DRAWN	Drew Christopher	Ralph E. Anderson
CHECKED	A.J.B. S.J.B.	PASSED
REP-2	1-27-2000	ENGINEER OF BRIDGES AND STRUCTURES