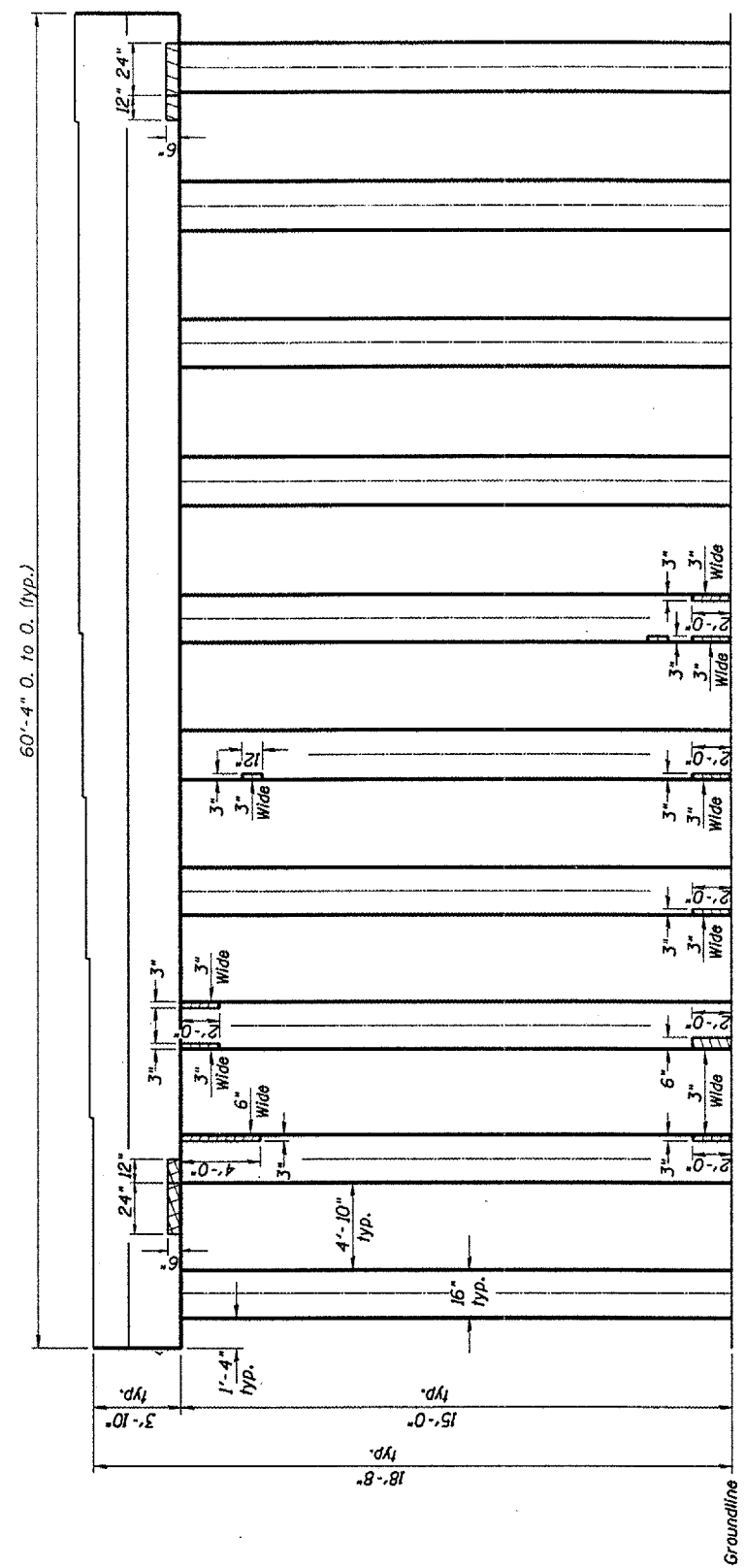


F.A.P. RTE.	SECTION	COUNTY	TOTAL SHEETS	SHEET NO.
64	*	PEORIA	20	6
STA. 211+60.95		TO STA. 219+27.65		
FED. ROAD DIST. NO. 4		ILLINOIS FED. AID PROJECT		
* D4 Bridge Report 2007-2				

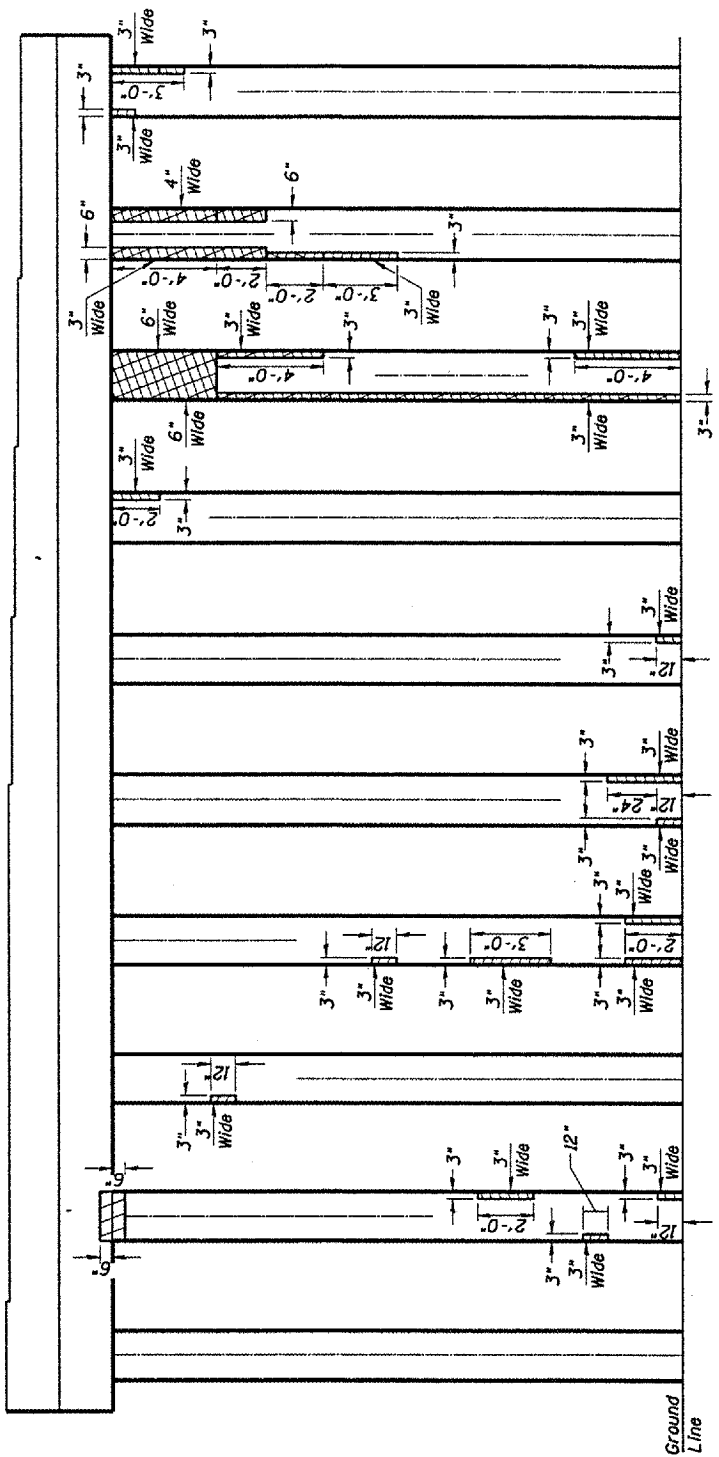


ELEVATION PIER I
(Looking West)

ESTIMATED QUANTITIES

ITEM	UNIT	QUANTITY
Structural Repair of Concrete (DS)	SO.FT.	2.6
Structural Repair of Concrete (ES)	SO.FT.	14.5

Structural Repair of Concrete = < 5"
 Structural Repair of Concrete > 5"



ELEVATION PIER I
(Looking East)

ESTIMATED QUANTITIES

ITEM	UNIT	QUANTITY
Structural Repair of Concrete (DS)	SO.FT.	7.0
Structural Repair of Concrete (ES)	SO.FT.	39.6

Structural Repair of Concrete = < 5"
 Structural Repair of Concrete > 5"

PLOT DATE * DATE
 FILE NAME * FILE
 PLOT SCALE * SCALER
 REFERENCE * SHEET

REVISIONS	
NAME	DATE

SN.072-0012 Adams St. over Clark St. & B.N.R.R.

ILLINOIS DEPARTMENT OF TRANSPORTATION

STRUCTURAL REPAIR DETAILS

SCALE: VERT.
 HORIZ.
 DATE 06-16-2005

DRAWN BY CEJ
 CHECKED BY