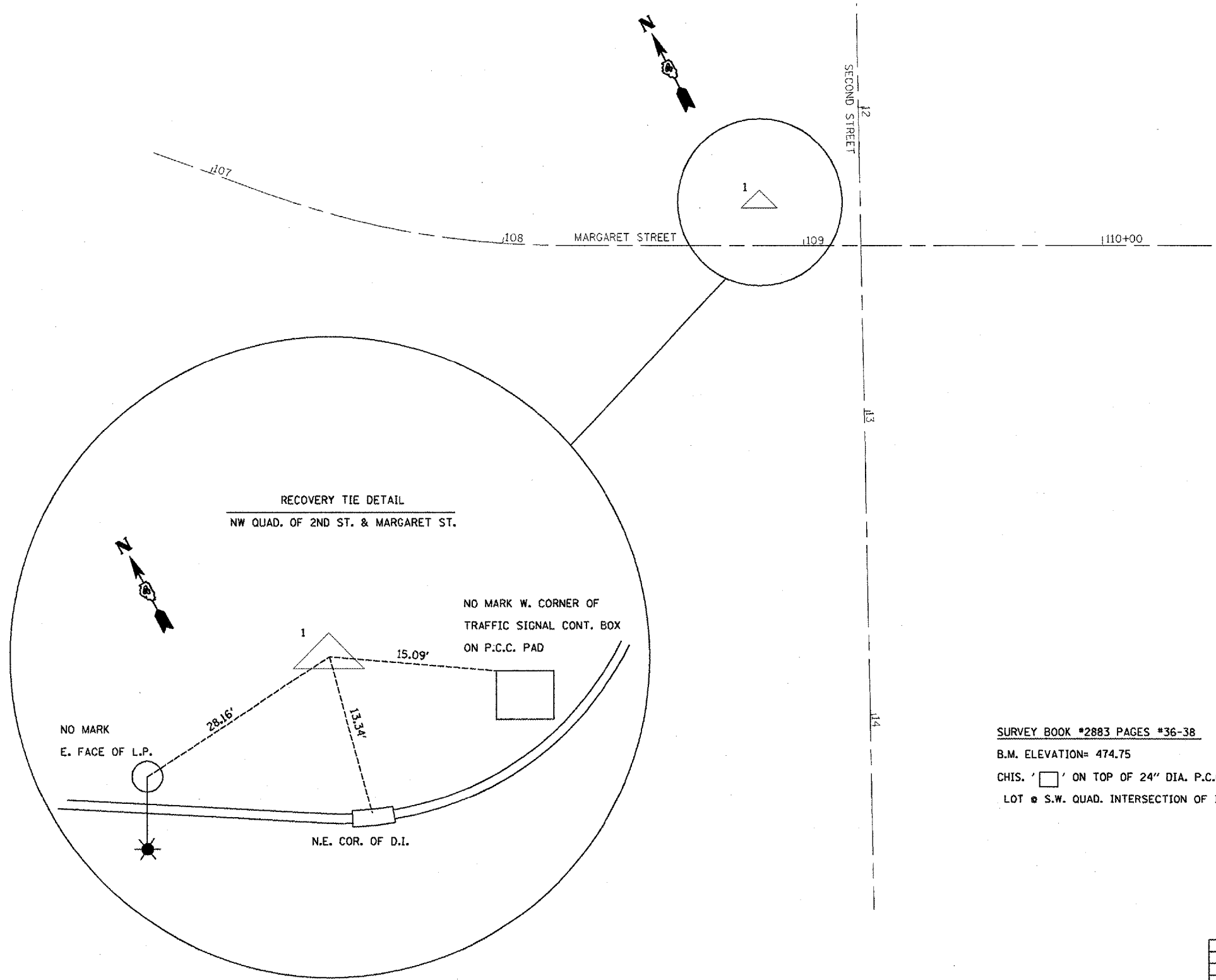


CONTRACT NO. 68649				
F.A.P. RTE.	SECTION	COUNTY	TOTAL SHEETS	SHEET NO.
693	04 RADIUS IMPROV. 2007	TAZEWELL		8
STA.		TO STA.		
FED. ROAD DIST. NO. 4		ILLINOIS FED. AID PROJECT		



SURVEY BOOK #2883 PAGES #36-38
 B.M. ELEVATION= 474.75
 CHIS. ' ' ON TOP OF 24" DIA. P.C.C. LIGHT POLE BASE IN PARKING
 LOT # S.W. QUAD. INTERSECTION OF IL RT. 9 & IL RT. 29

PLOT DATE = 2/15/2007
 FILE NAME = c:\p\proj\04\12\p\p\p\shwest.dgn
 PLOT SCALE = 48.0000' / IN.
 USER NAME = gndmnm

REVISIONS	
NAME	DATE

ILLINOIS DEPARTMENT OF TRANSPORTATION

BENCHMARK AND RECOVERY TIE

SCALE: VERT. _____
 HORIZ. _____

DATE _____

DRAWN BY _____
 CHECKED BY _____