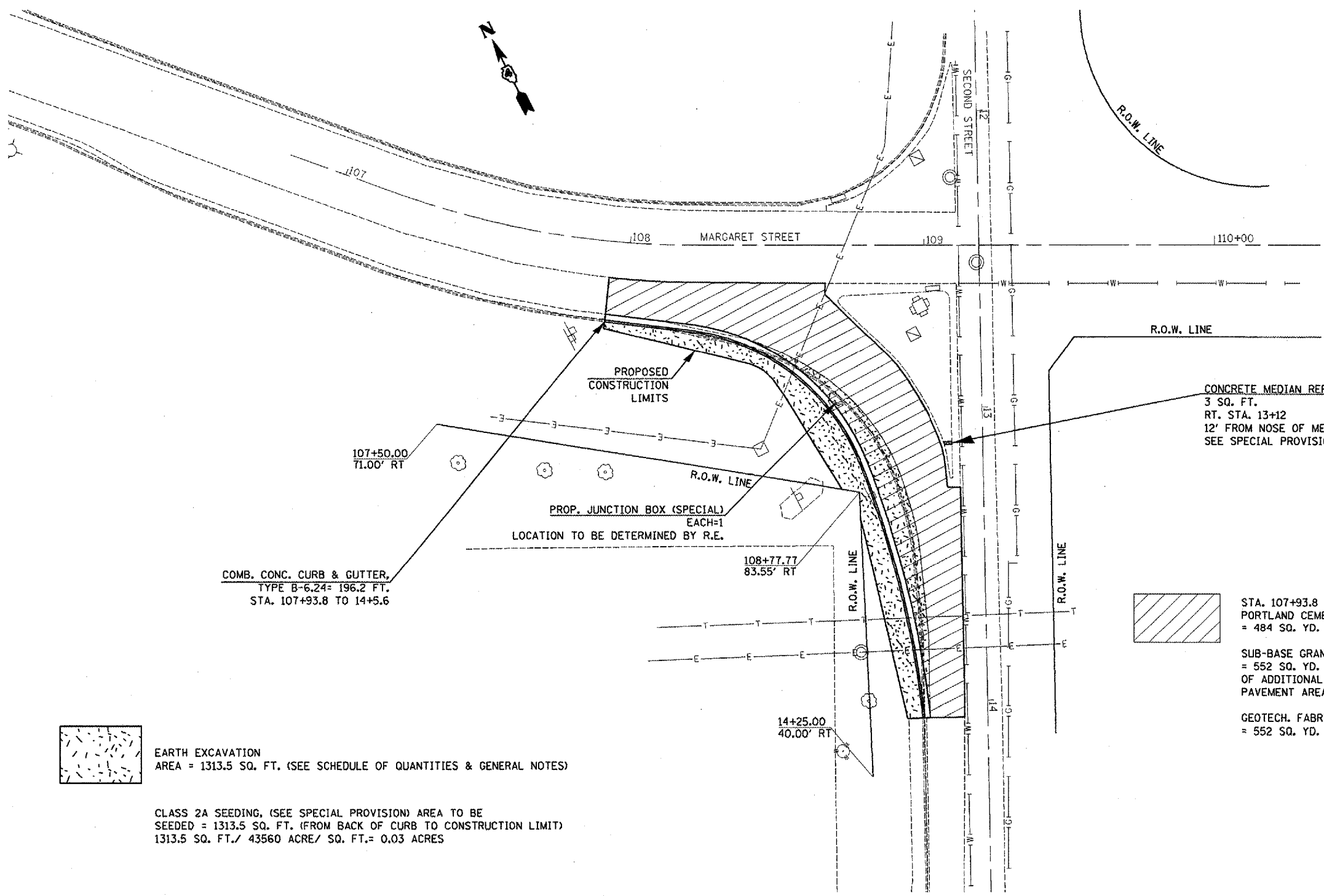


F.A.P. RTE.	SECTION	COUNTY	TOTAL SHEETS	SHEET NO.
693	D4 RADIUS IMPROV. 2007	TAZEWELL		//
STA.		TO STA.		
FED. ROAD DIST. NO. 4		ILLINOIS FED. AID PROJECT		

NOTES

A TYPE A FINAL FINISH SHALL BE USED AS SPECIFIED IN ARTICLE 420.09(EX1) OF THE STANDARD SPECIFICATIONS



EARTH EXCAVATION
 AREA = 1313.5 SQ. FT. (SEE SCHEDULE OF QUANTITIES & GENERAL NOTES)

CLASS 2A SEEDING, (SEE SPECIAL PROVISION) AREA TO BE SEEDED = 1313.5 SQ. FT. (FROM BACK OF CURB TO CONSTRUCTION LIMIT) 1313.5 SQ. FT./ 43560 ACRE/ SQ. FT.= 0.03 ACRES



REVISIONS	
NAME	DATE

ILLINOIS DEPARTMENT OF TRANSPORTATION

PROPOSED IMPROVMENT AND EXISTING UTILITIES

SCALE: VERT. _____
 HORIZ. _____
 DATE _____

DRAWN BY _____
 CHECKED BY _____

PLOT DATE = 2/15/2007
 FILE NAME = c:\projects\112\psun\sheet.dgn
 PLOT SCALE = 40.0000 / IN.
 USER NAME = ghdinham