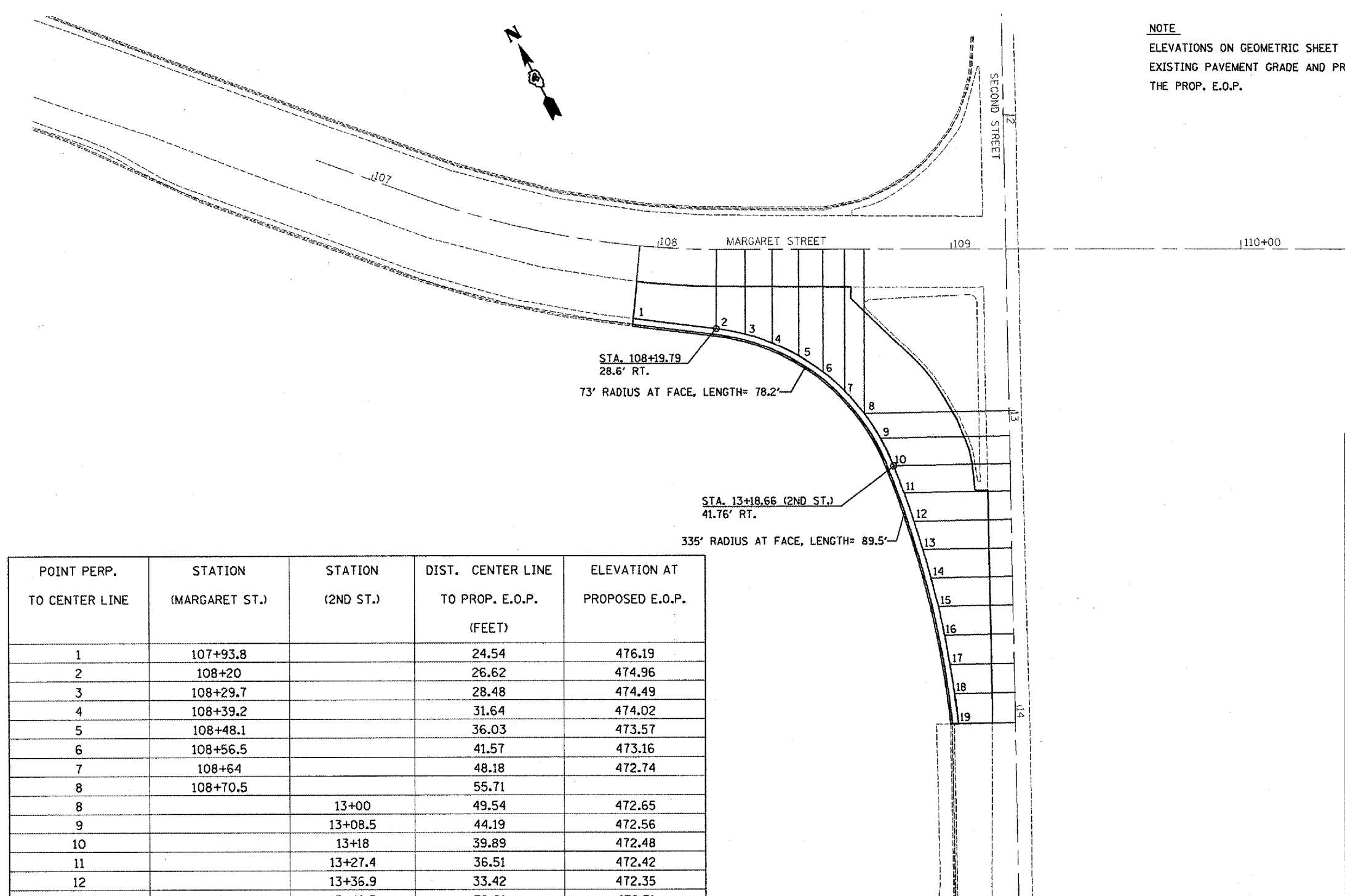


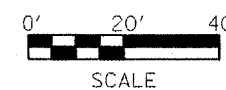
F.A.P. RTE.	SECTION	COUNTY	TOTAL SHEETS	SHEET NO.
693	04 RADIUS IMPROV. 2007	TAZEWELL		12
STA.		TO STA.		
FED. ROAD DIST. NO. 4		ILLINOIS FED. AID PROJECT		

**NOTE**  
 ELEVATIONS ON GEOMETRIC SHEET WERE DEVELOPED BY MATCHING EXISTING PAVEMENT GRADE AND PROJECTING THOSE GRADES TO THE PROP. E.O.P.



POINT PERP. TO CENTER LINE	STATION (MARGARET ST.)	STATION (2ND ST.)	DIST. CENTER LINE TO PROP. E.O.P. (FEET)	ELEVATION AT PROPOSED E.O.P.
1	107+93.8		24.54	476.19
2	108+20		26.62	474.96
3	108+29.7		28.48	474.49
4	108+39.2		31.64	474.02
5	108+48.1		36.03	473.57
6	108+56.5		41.57	473.16
7	108+64		48.18	472.74
8	108+70.5		55.71	
8		13+00	49.54	472.65
9		13+08.5	44.19	472.56
10		13+18	39.89	472.48
11		13+27.4	36.51	472.42
12		13+36.9	33.42	472.35
13		13+46.5	30.61	472.31
14		13+56.2	28.08	472.28
15		13+65.9	25.84	472.25
16		13+75.7	23.89	472.19
17		13+85.6	22.24	472.13
18		13+95.5	20.87	472.06
19		14+05.6	19.79	472.00

POINT PERP. TO CENTER LINE	STATION/OFFSET PROP. B.O.C.	ELEVATION AT PROP. TOP B.O.C.
1	107+93.77 ( 27.12')	476.57
2	108+19.67 (29.18')	475.34
3	108+28.90 (30.98')	474.87
4	108+37.99 (34.03')	474.4
5	108+46.60 (38.27')	473.95
6	108+54.57 (43.62')	473.54
7	108+61.77 (50.00')	473.12
8		
8	13+01.91(51.62')	473.03
9	13+10.01 (46.46')	472.95
10	13+19.05 (42.31')	472.86
11	13+28.37 (38.96')	472.80
12	13+37.79 (35.88')	472.73
13	13+47.30 (33.09')	472.69
14	13+56.89 (30.59')	472.67
15	13+66.55 (28.37')	472.63
16	13+76.27 (26.43')	472.57
17	13+86.04 (24.79')	472.51
18	13+95.85 (23.44')	472.45
19	14+05.59 (22.38')	472.38



REVISIONS	
NAME	DATE

ILLINOIS DEPARTMENT OF TRANSPORTATION

PROPOSED GEOMETRICS

SCALE: VERT. HORIZ. DATE

DRAWN BY CHECKED BY