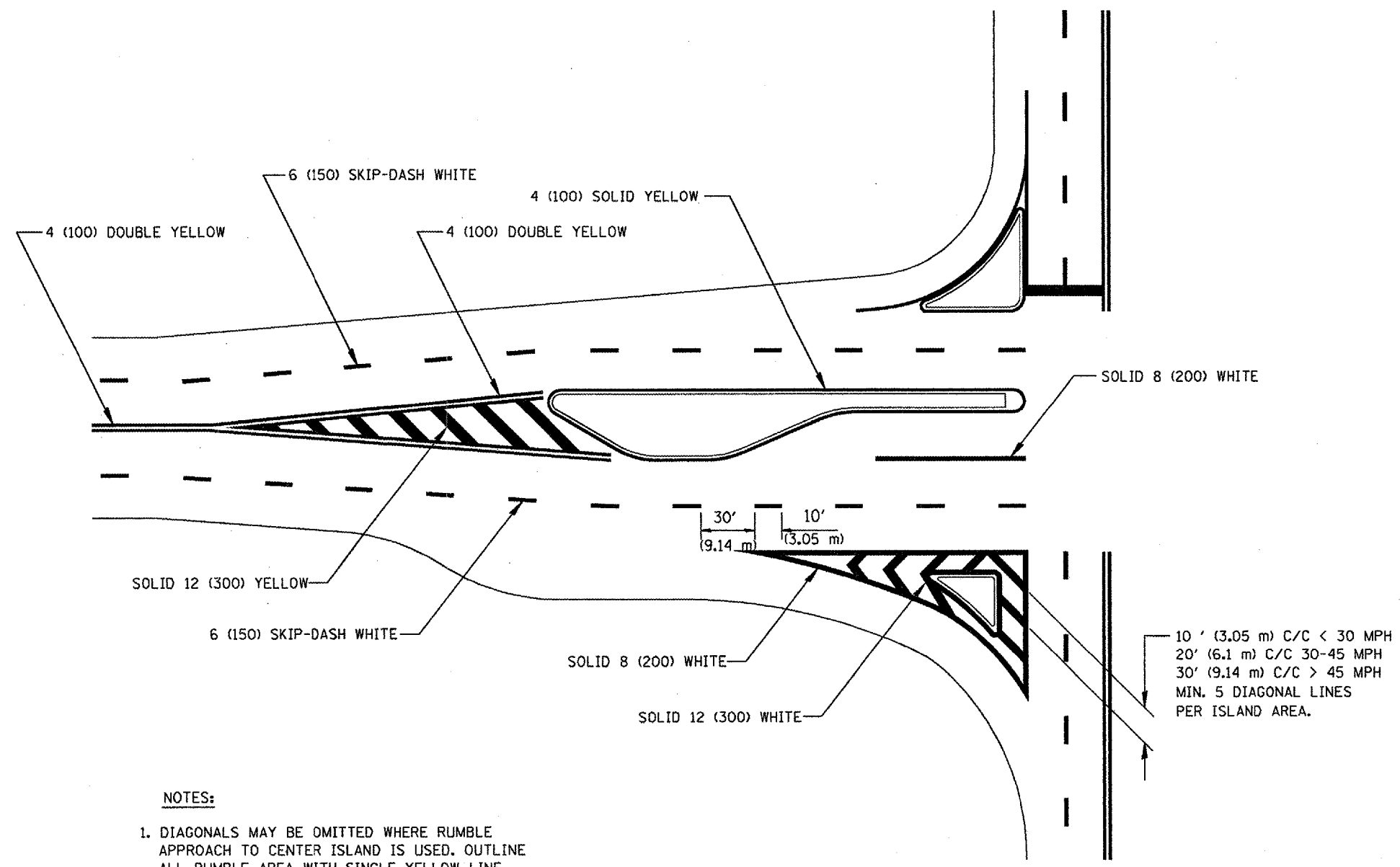


CONTRACT NO. 68649				
F.A.P. RTE.	SECTION	COUNTY	TOTAL SHEETS	SHEET NO.
693	D4 RAD. IMPROV. 2007	TAZEWELL		110
STA.	TO STA.			
FED. ROAD DIST. NO.	ILLINOIS	FED. AID PROJECT		



NOTES:

1. DIAGONALS MAY BE OMITTED WHERE RUMBLE APPROACH TO CENTER ISLAND IS USED. OUTLINE ALL RUMBLE AREA WITH SINGLE YELLOW LINE.
2. SEE FIGURE 3B-13 OF THE MUTCD FOR RECOMMENDED TAPER LENGTHS.

**OFF-SET ISLANDS
AND
ISLAND APPROACH MARKINGS**

REVISIONS	
NAME	DATE

ILLINOIS DEPARTMENT OF TRANSPORTATION
ILLINOIS DEPARTMENT OF TRANSPORTATION
DISTRICT 4 PAVEMENT MARKING DETAILS
SCALE: NOT TO SCALE
DATE 11 - 05
DRAWN BY
CHECKED BY

All dimensions are in inches (millimeters) unless otherwise noted.

PLOT DATE = 2/15/2007
FILE NAME = c:\projects\112\pavement\details\adgn
PLOT SCALE = 1/8" = 1'-0"
USER NAME = gtdunham