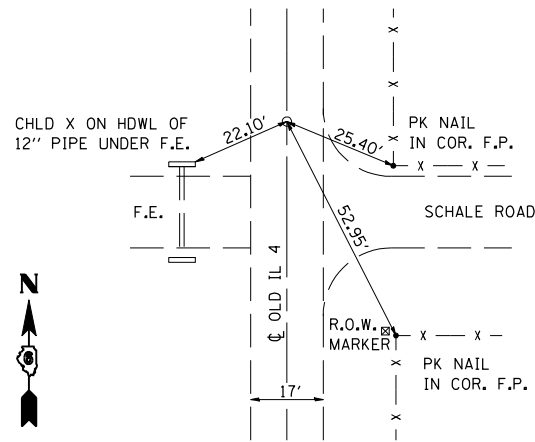
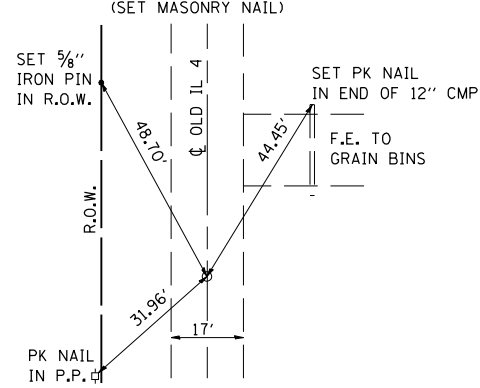


STA. 2119+80 (P.O.T. #5)
(SET MASONRY NAIL)



STA. 2136+51.32 (BK.) =
STA. 2137+36.64 (AH.)
(P.O.T. #6)
(SET MASONRY NAIL)



TBM #1 CHISELED SQUARE ON TOP N.E. HEADWALL OF 4' x 3" BOX CULVERT, 500'± SOUTH OF STR. #059-0030, STA. 2134+29.69 OFFSET = 15.39' LT., ELEV. = 627.95

TBM #2 R.R. SPIKE IN THIRD P.P. NORTH OF CURVE ON W. SIDE OF OLD RTE. #4
STA. 2141+22.63 OFFSET = 31.13' RT., ELEV. = 630.90
STATION EQUATION: STA. 2136+51.32 (BK.) = STA. 2137+36.64 (AH.)

F.A.D. RTE.	SECTION	COUNTY	TOTAL SHEETS	SHEET NO.
SBI-4	F(B-3)	MACOUPIN	27	10
STA.		TO STA.		
FED. ROAD DIST. NO.	ILLINOIS	FED. AID PROJECT		
CONTRACT #72407				

REVISIONS	
NAME	DATE

ILLINOIS DEPARTMENT OF TRANSPORTATION

HORIZONTAL TIES

SCALE: NONE
DATE: 08/2004

DRAWN BY: FML
CHECKED BY: JH