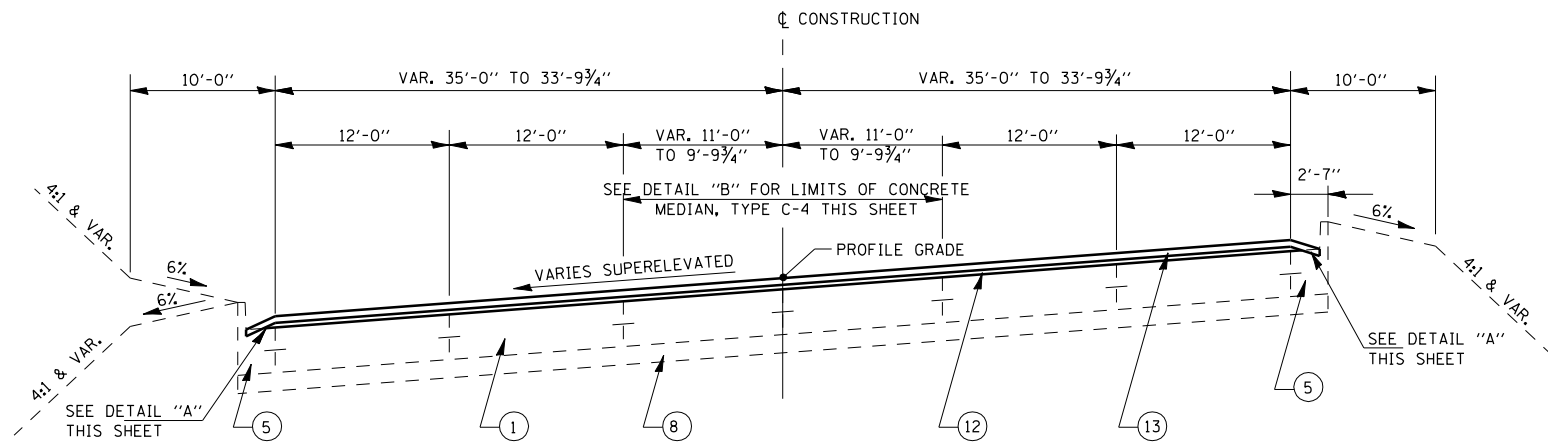
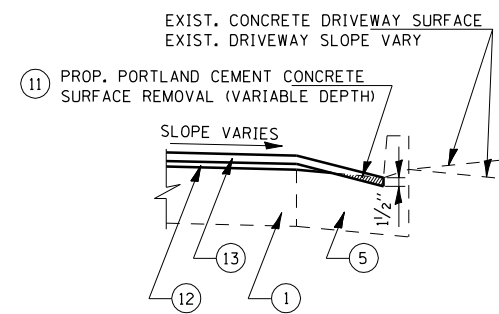


F.A.P. RTE.	SECTION	COUNTY	TOTAL SHEETS	SHEET NO.
67	S(RS-5, TS-7), L	SANGAMON	78	20
STA.		TO STA.		
FED. ROAD DIST. NO.		ILLINOIS FED. AID PROJECT		



**TYPICAL SECTION # 4**  
STA. 141+43.08 TO STA. 149+76.00

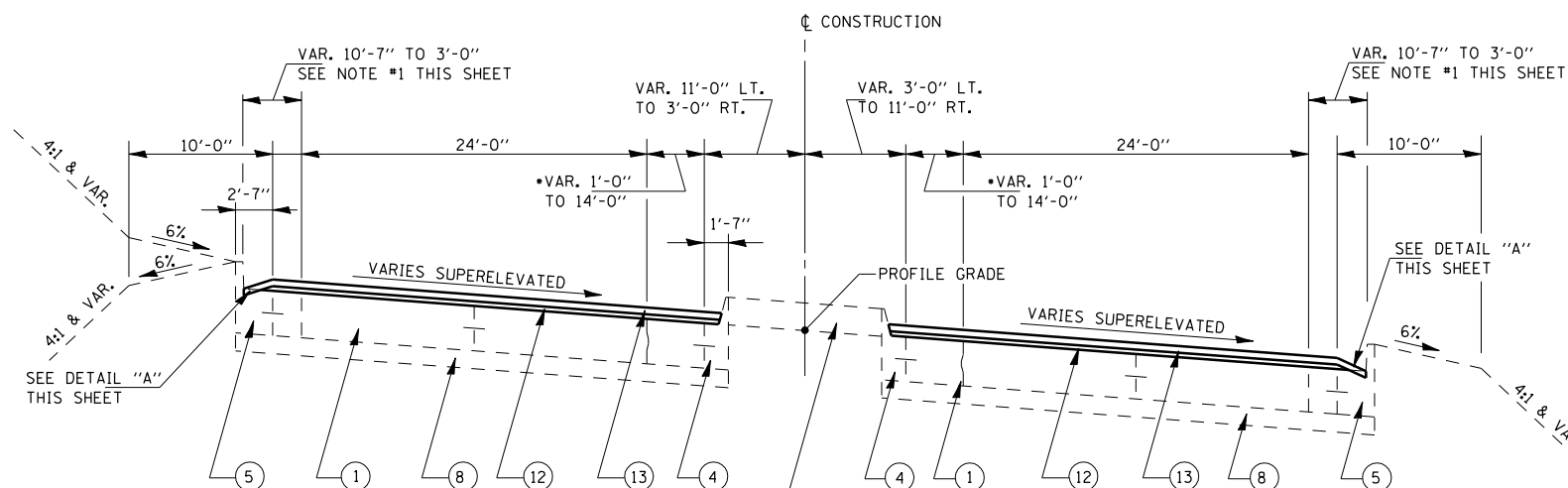
**NOTE:**  
•LT. TURN LANE STA. 141+43.08 TO STA. 142+66.47  
•LT. TURN LANE STA. 143+74.07 TO STA. 149+09.20  
SLOPE SAME AS THROUGH PAVEMENT



**DETAIL "A"**

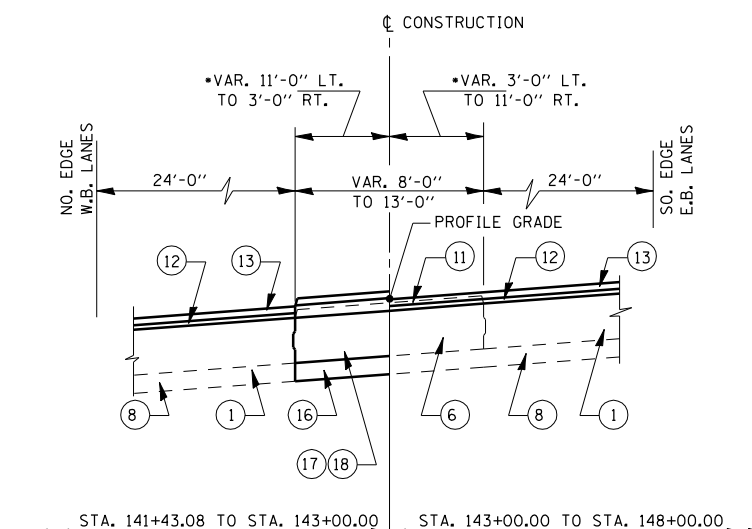
**LEGEND FOR TYPICAL SECTIONS**

- ① EXIST. PCC PAVEMENT 10"
- ② EXIST. BITUMINOUS SHOULDER 10"
- ③ EXIST. AGGREGATE SHOULDER, TYPE B
- ④ EXIST. COMBINATION CONCRETE CURB AND GUTTER TYPE M-6.12
- ⑤ EXIST. COMBINATION CONCRETE CURB AND GUTTER TYPE B-6.24
- ⑥ EXIST. CONCRETE MEDIAN TYPE-C4
- ⑦ EXIST. CONCRETE MEDIAN SURFACE 4"
- ⑧ EXIST. STABILIZED SUB-BASE 4"
- ⑨ EXIST. SUB SURFACE DRAINS
- ⑩ PROP. HOT-MIX ASPHALT SURFACE REMOVAL (VARIABLE DEPTH)
- ⑪ PROP. PORTLAND CEMENT CONCRETE SURFACE REMOVAL (VARIABLE DEPTH)
- ⑫ PROP. LEVELING BINDER (MACHINE METHOD) (1") N90
- ⑬ PROP. POLYMERIZED HOT-MIX ASPHALT SURFACE COURSE, MIX "D" N90 (1/2")
- ⑭ PROP. HOT-MIX ASPHALT SHOULDERS
- ⑮ PROP. AGGREGATE SHOULDERS, TYPE B
- ⑯ PROP. STABILIZED SUB-BASE 4"
- ⑰ PROP. MEDIAN REMOVAL (STANDARD 2122)
- ⑱ PROP. CORRUGATED MEDIAN (STANDARD 606306)

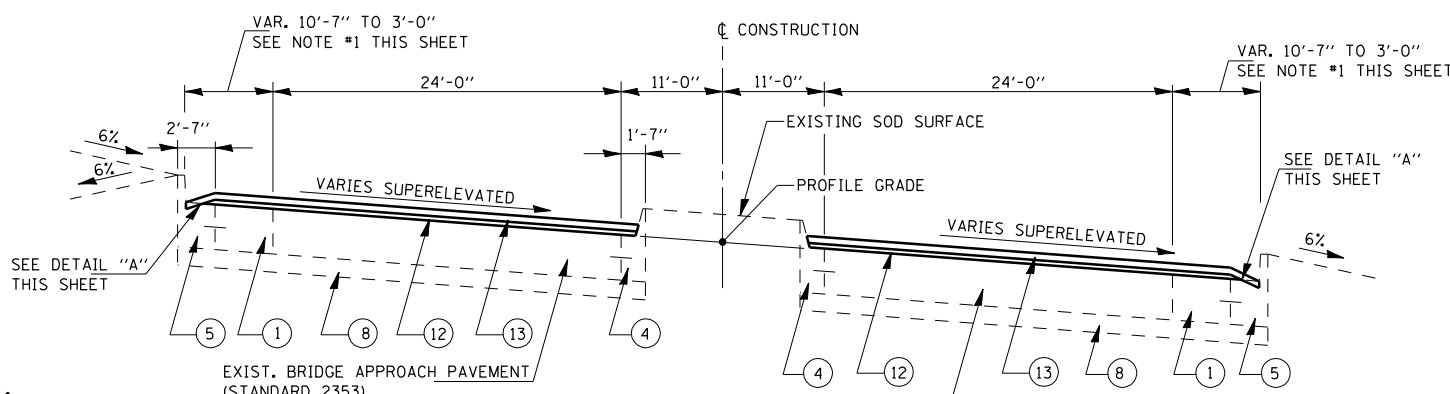


**TYPICAL SECTION # 3**  
STA. 127+44.10 TO STA. 141+43.08 (EASTBOUND) &  
STA. 127+60.84 TO STA. 141+43.08 (WESTBOUND)

**NOTE:**  
•LT. TURN LANE-STA. 131+06.57 TO STA. 133+43.51  
•LT. TURN LANE-STA. 138+79.09 TO STA. 141+43.08  
•LT. TURN LANE-STA. 139+53.08 TO STA. 141+43.08  
SAME SLOPE AS THROUGH PAVEMENTS



**DETAIL "B"**  
**DETAILS FOR CONCRETE MEDIAN, TYPE C-4**  
STA. 141+43.08 TO STA. 148+00.00



**TYPICAL SECTION # 2**  
STA. 126+44.10 TO STA. 127+44.10 (EASTBOUND) &  
STA. 126+60.84 TO STA. 127+60.84 (WESTBOUND)

**NOTE #1:**  
FROM END OF BRIDGE APPROACH SHOULDER PAVEMENT  
EXIST. PCC PAVEMENT 10"  
RT. STA. 126+48.31 TO RT. STA. 127+84.00  
LT. STA. 126+81.49 TO LT. STA. 128+17.00

**NOTE:**  
THE FLAG OF ALL EXISTING COMBINATION CONCRETE CURB & GUTTER LOCATED ON THE HIGH SIDE OF THE PAVEMENT SLOPES THE SAME AS THE ADJACENT PAVEMENT.

REVISIONS	
NAME	DATE

ILLINOIS DEPARTMENT OF TRANSPORTATION  
**TYPICAL SECTIONS**  
FAP 67 (IL 97/ JEFFERSON ST)  
SECTION S(RS-5, TS-7), L  
SANGAMON COUNTY

SCALE: VERT. \_\_\_\_\_  
HORIZ. \_\_\_\_\_  
DATE \_\_\_\_\_ DRAWN BY \_\_\_\_\_  
CHECKED BY \_\_\_\_\_