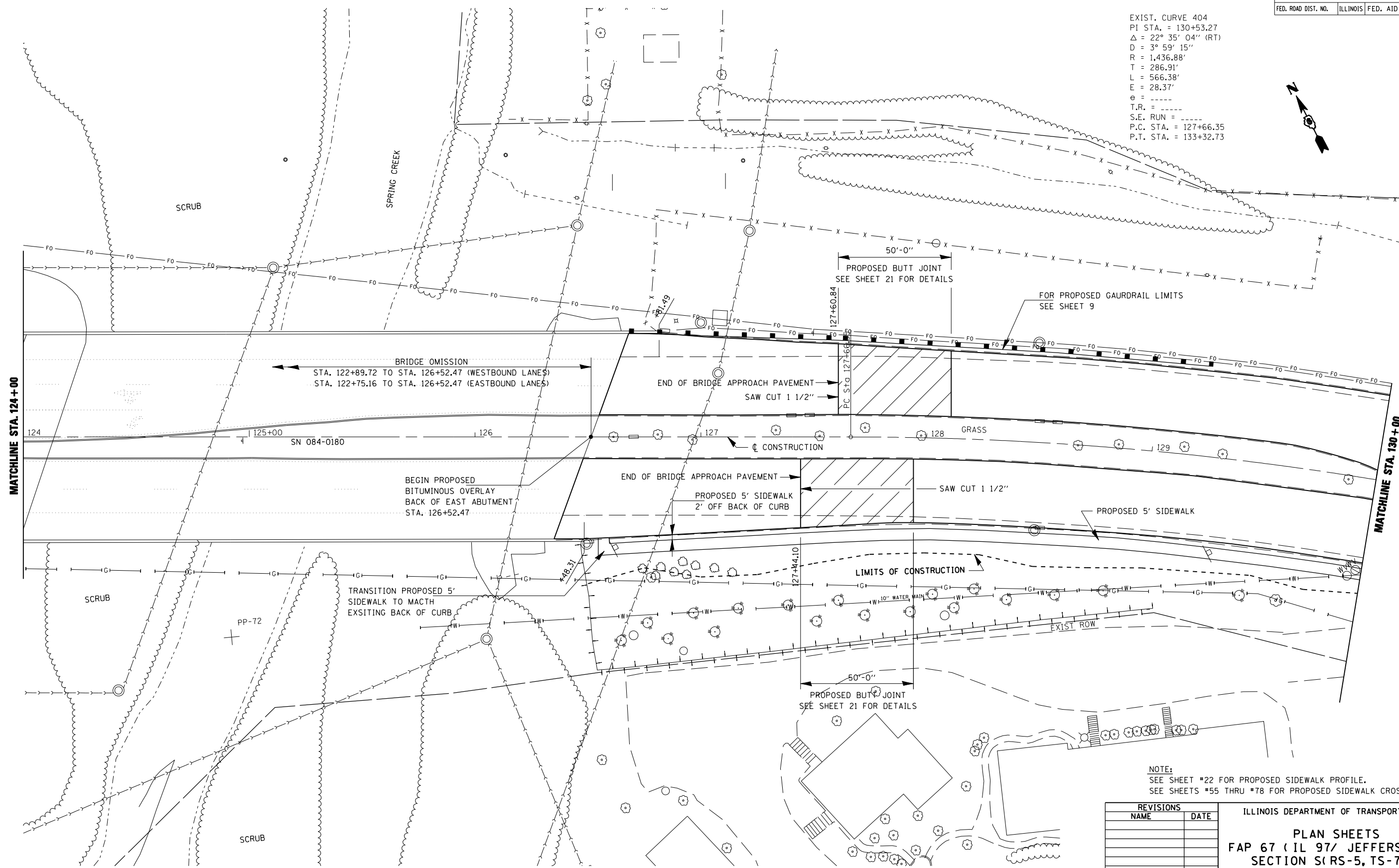
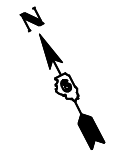


F.A.P. RTE.	SECTION	COUNTY	TOTAL SHEETS	SHEET NO.
67	S(RS-5,TS-7),L	SANGAMON	78	28
STA.		TO STA.		
FED. ROAD DIST. NO.	ILLINOIS	FED. AID PROJECT		

EXIST. CURVE 404
 PI STA. = 130+53.27
 $\Delta = 22^\circ 35' 04''$ (RT)
 $D = 3^\circ 59' 15''$
 $R = 1,436.88'$
 $T = 286.91'$
 $L = 566.38'$
 $E = 28.37'$
 $e = \text{---}$
 $T.R. = \text{---}$
 $S.E. RUN = \text{---}$
 $P.C. STA. = 127+66.35$
 $P.T. STA. = 133+32.73$



NOTE:
 SEE SHEET #22 FOR PROPOSED SIDEWALK PROFILE.
 SEE SHEETS #55 THRU #78 FOR PROPOSED SIDEWALK CROSS SECTION

REVISIONS	
NAME	DATE

ILLINOIS DEPARTMENT OF TRANSPORTATION
PLAN SHEETS
FAP 67 (IL 97/ JEFFERSON ST)
SECTION S(RS-5, TS-7), L
SANGAMON COUNTY
 SCALE: VERT. _____
 HORIZ. _____
 DATE _____
 DRAWN BY _____
 CHECKED BY _____

PLOT DATE = #DATES
 FILE NAME = #FILE#
 USER NAME = #USER#