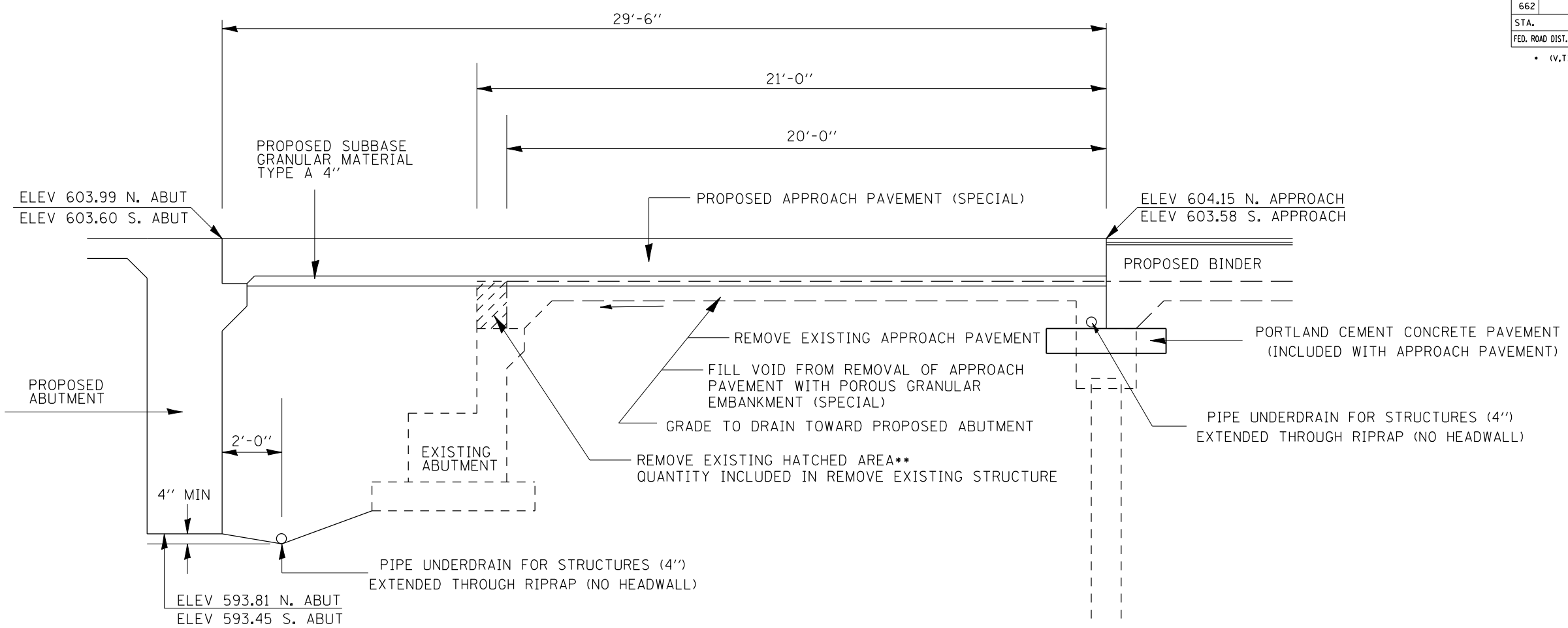
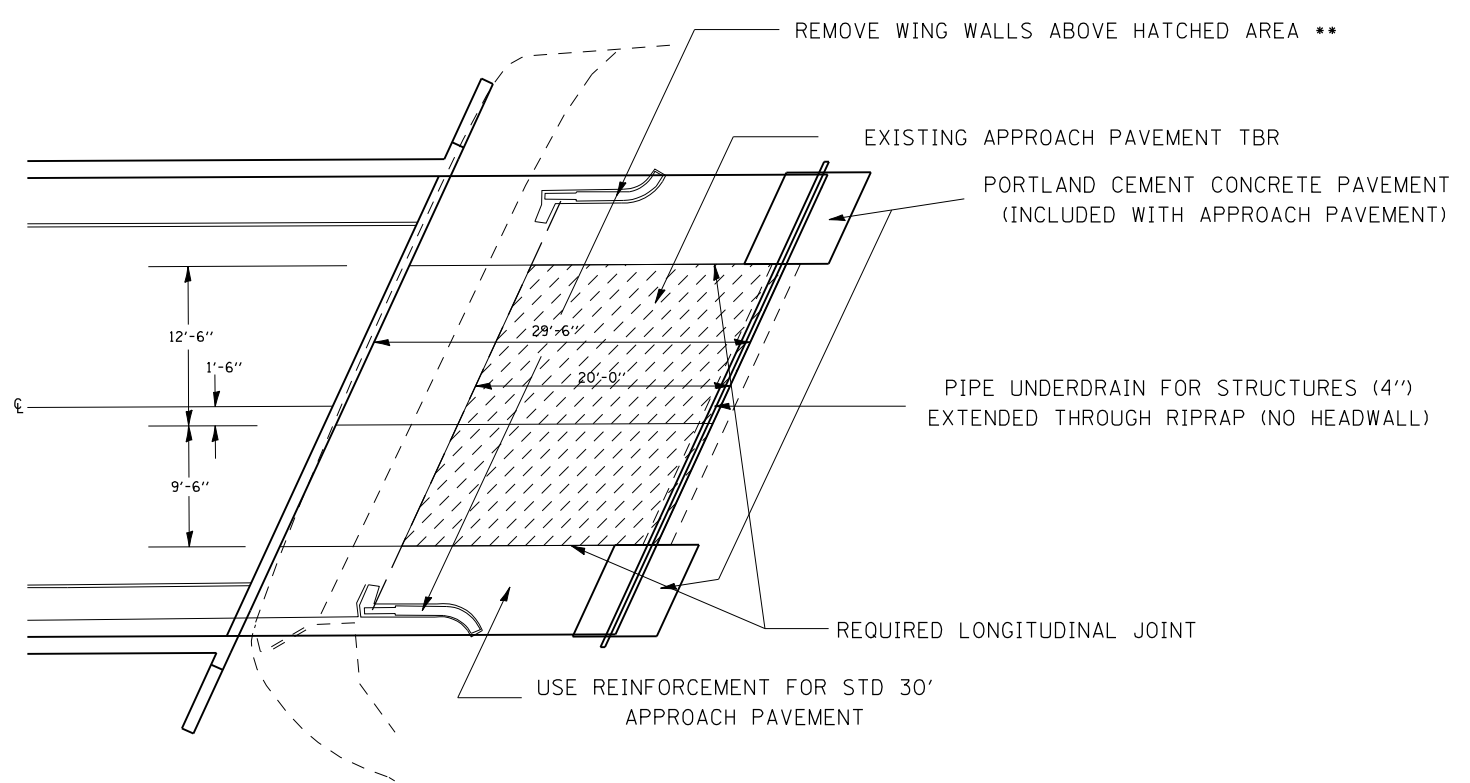


F.A.P. RTE.	SECTION	COUNTY	TOTAL SHEETS	SHEET NO.
662	•	MACOUPIN	68	26
STA.		TO STA.		
FED. ROAD DIST. NO.	ILLINOIS	FED. AID PROJECT		
• (V.1)B-2				



** EXISTING WINGWALLS ABOVE THE BOTTOM OF THE HATCHED AREA TO BE REMOVED. QUANTITY INCLUDED IN REMOVE EXISTING STRUCTURE



REVISIONS	
NAME	DATE

ILLINOIS DEPARTMENT OF TRANSPORTATION
 BRIDGE APPROACH
 PAVEMENT SPECIAL
 HONEY CREEK
 FAP 662 (IL 4)

SCALE: VERT. DRAWN BY KPG
 HORIZ. CHECKED BY JGM
 DATE 03-06-07

ct:\projects\0652605\sh\de\ta\ls.dgn
 3/13/2007
 *REF01