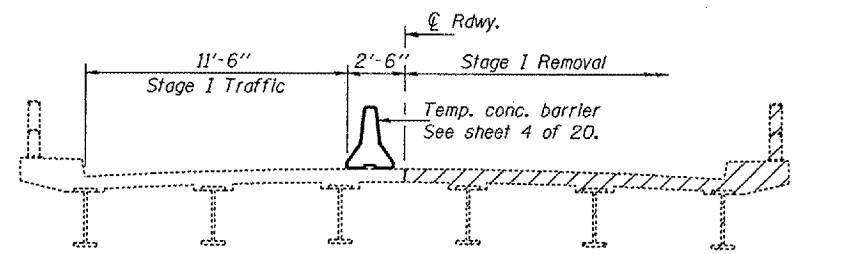


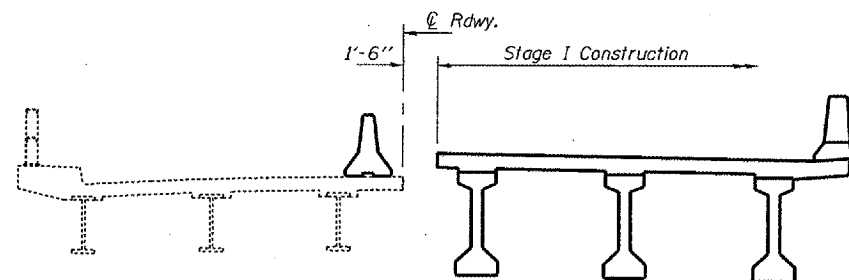
STATE OF ILLINOIS
DEPARTMENT OF TRANSPORTATION

ROUTE NO.	SECTION	COUNTY	SHEETS	DATE	SHEET NO. 2
FAP 662	(V.T)B-2	MACOUPIN	68	33	20 SHEETS
FED. ROAD DIST. NO. 7	ILLINOIS	FED. AID PROJECT-			

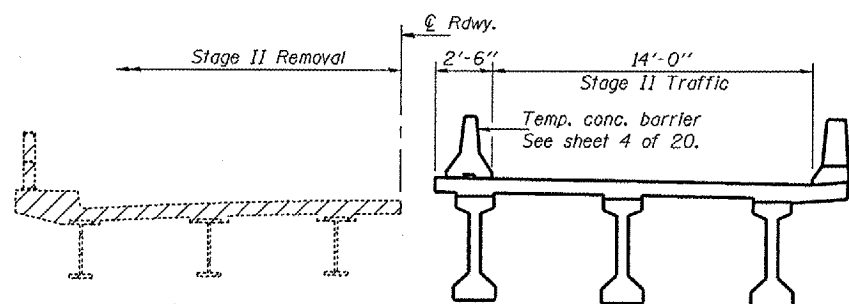
Contract #72993



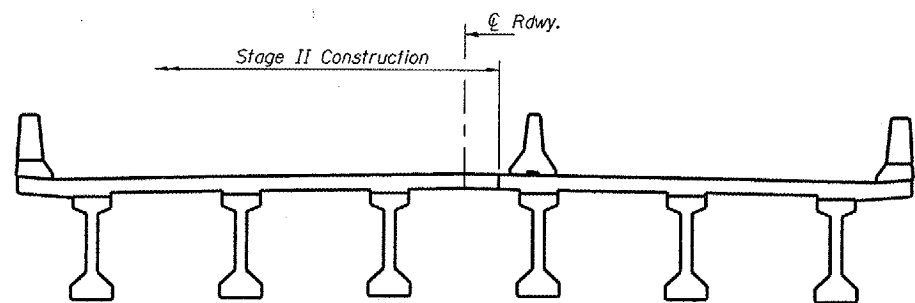
***STAGE I REMOVAL



STAGE I CONSTRUCTION



***STAGE II REMOVAL



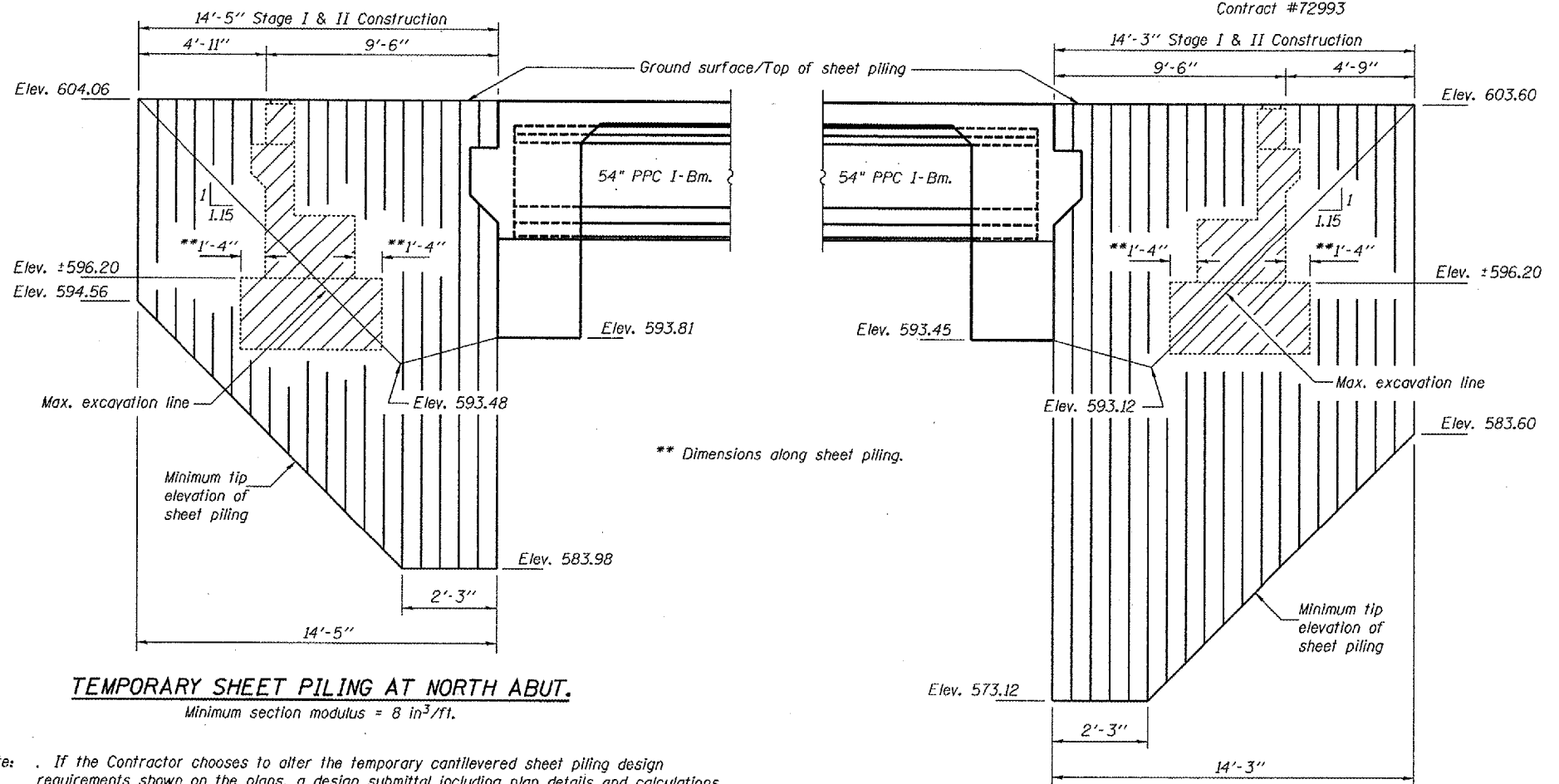
STAGE II CONSTRUCTION

*** Stage removal lines shown are for superstructure and abutments.
Stage removal lines for existing piers are different, see sheet 3 of 20.

Notes: Hatched area indicates Removal of Existing Structures.
For quantity of Temporary Concrete Barrier, see Roadway Plans.
All staging cross sections are looking south.

DESIGNED	DPN
CHECKED	AJB
DRAWN	h.t. duong
CHECKED	AJB/DPN

Jan 23, 2007
EXAMINED *Thomas J. Damagala*
PASSED *Ralph E. Anderson*
ENGINEER OF BRIDGES AND STRUCTURES



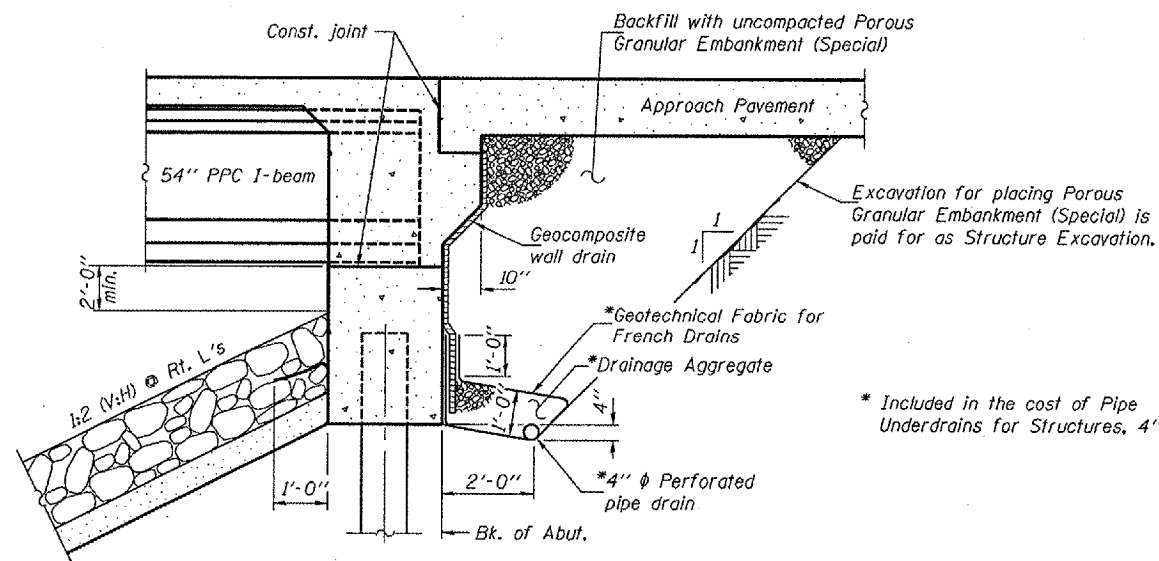
TEMPORARY SHEET PILING AT NORTH ABUT.

Minimum section modulus = 8 in³/ft.

TEMPORARY SHEET PILING AT SOUTH ABUT.

Minimum section modulus = 24 in³/ft.

Note: If the Contractor chooses to alter the temporary cantilevered sheet piling design requirements shown on the plans, a design submittal including plan details and calculations will be required for review and acceptance by the Engineer.



SECTION THRU INTEGRAL ABUTMENT

(Horiz. dim. @ Rt. L's)

All drainage system components shall extend to 2'-0" from the end of each wingwall except an outlet pipe shall extend until intersecting with the side slopes. The pipes shall drain into concrete headwalls. (See Article 601.05 of the Std. Spec's. and Highway Standard 60110).

STAGE CONSTRUCTION DETAILS
F.A.P. RT. 662 SECTION (V.T)B-2
MACOUPIN COUNTY
STATION 447+03.80
STRUCTURE NO. 059-0504