

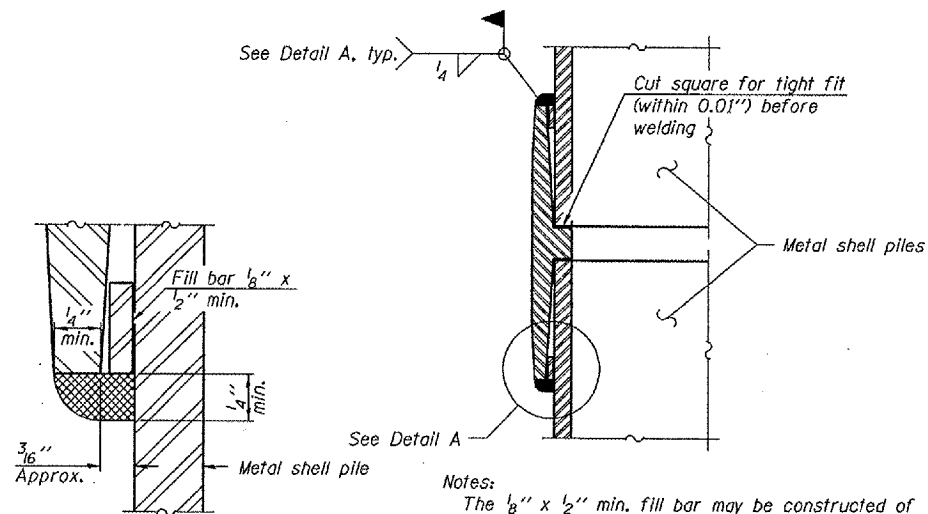
STATE OF ILLINOIS
DEPARTMENT OF TRANSPORTATION

ROUTE NO.	SECTION	COUNTY	TOTAL SHEETS	SHEET NO.	SHEET NO. 16
FAP 662	(V.T)B-2	MACOUPIN	68	47	20 SHEETS
FED. ROAD DIST. NO. 7	ILLINOIS	FED. AID PROJECT			

Contract #72993

METAL SHELL PILE TABLE

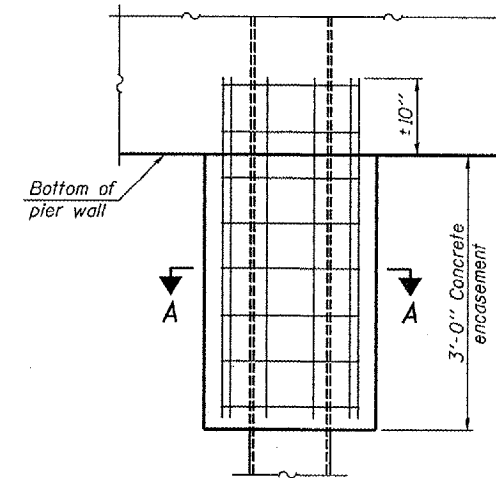
Designation	Wall thickness t	Weight per foot (Lbs./ft.)	Inside volume (yd. ³ /ft.)	Encasement diameter A
PP12	0.179"	22.60	0.0274	30"
PP12	0.250"	31.37	0.0267	30"
PP14	0.250"	36.71	0.0368	30"
PP14	0.312"	45.61	0.0361	30"



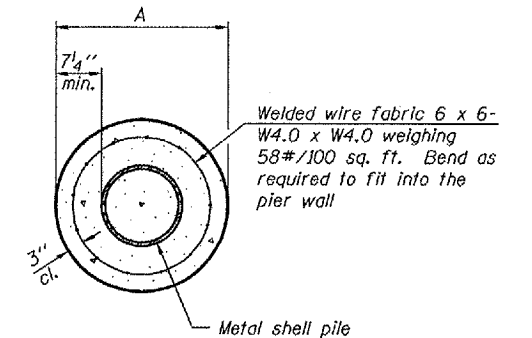
DETAIL A

Notes:
The 1/8" x 1/2" min. fill bar may be constructed of 2 bars with a 1/8" max. gap between them.
Pile segments shall be driven to solid contact with splicer before welding.

WELDED COMMERCIAL SPLICE



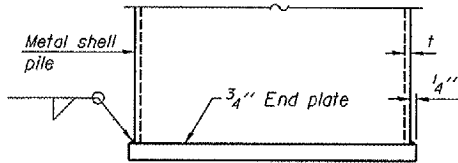
ELEVATION



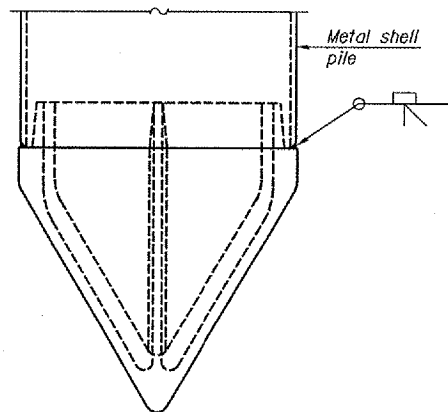
SECTION A-A

Notes:
See Metal Shell Pile Table for dimension "A".
Forms for encasement may be omitted when soil conditions permit.

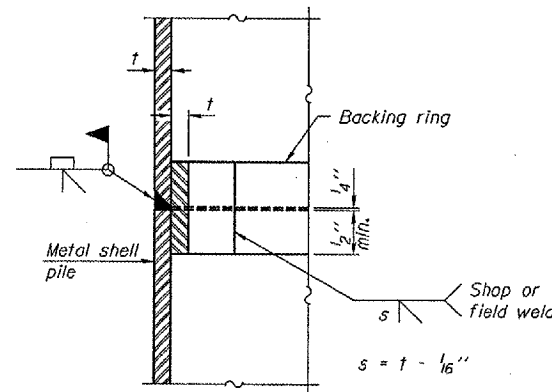
CONCRETE ENCASEMENT AT PIERS



END PLATE ATTACHMENT

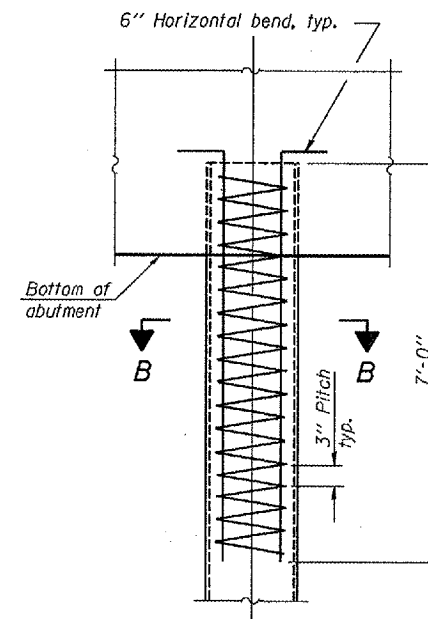


METAL SHELL PILE SHOE ATTACHMENT

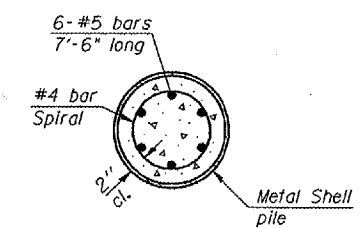


COMPLETE PENETRATION WELD SPLICE

Backing ring made from pile shell. Remove segment to allow reducing circumference and vertically rejoin with partial joint penetration weld.



ELEVATION



SECTION B-B

METAL SHELL REINFORCEMENT AT ABUTMENTS

DESIGNED	DPN
CHECKED	AJB
DRAWN	h.t. duong
CHECKED	FT/AJB/DPN

Jan 23, 2007
EXAMINED *Thomas J. Donagale*
PASSED *Ralph E. Anderson*

F-MS 11-1-06

Note:
The metal shell piles shall be according to ASTM A 252 Grade 3.

METAL SHELL PILE DETAILS
F.A.P. RT. 662 SECTION (V.T)B-2
MACOUPIN COUNTY
STATION 447+03.80
STRUCTURE NO. 059-0504