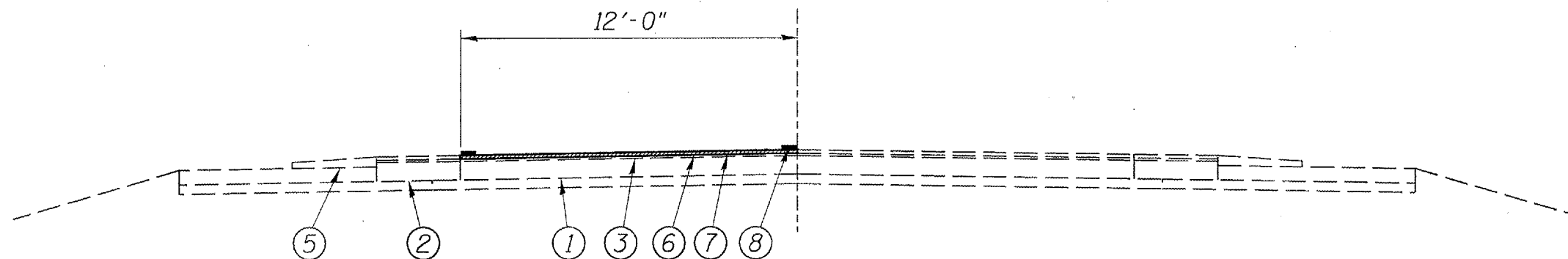
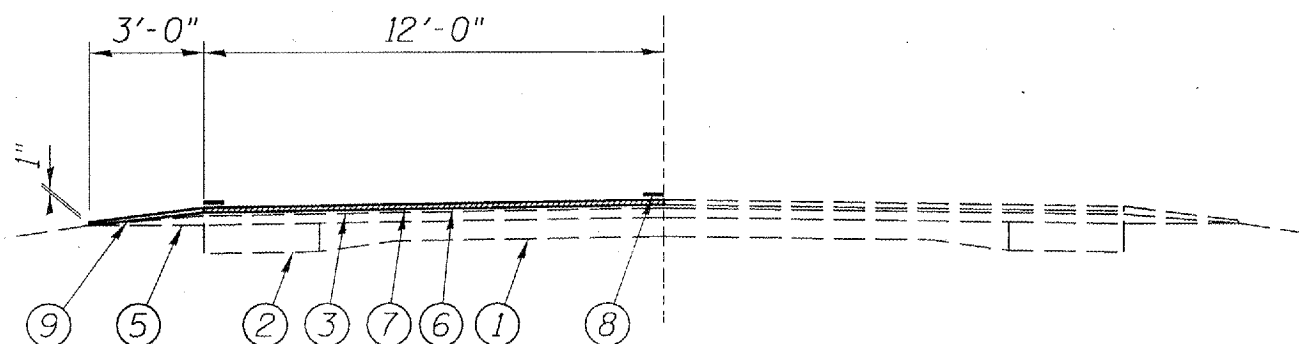


LOCATION #1
STA. 160+61 TO 168+11



LOCATION #2
STA. 270+18.75 TO 277+68.75
STA. 279+62.83 TO 281+12.83



LOCATION #3
STA. 403+06 TO 421+56

LEGEND

- 1 - EXIST. P.C.C. PAVEMENT
- 2 - EXIST. H.M.A. BASE COURSE WIDENING
- 3 - EXIST. H.M.A. SURFACE
- 4 - EXIST. BRICK PAVEMENT WITH WIDENING
- 5 - EXIST. AGGREGATE SHOULDER
- 6 - PROP. H.M.A. SURFACE REMOVAL 1½"
- 7 - PROP. POLY. H.M.A. SURFACE COURSE, MIX D, N70 1½"
- 8 - PROP. PAINT PAVEMENT MARKING - LINE 5"
- 9 - PROP. AGG. SHOULDER, TYPE B

TYPICAL SECTIONS
FAP 325 (IL 16)
SECTION (21)I-5
MONTGOMERY COUNTY