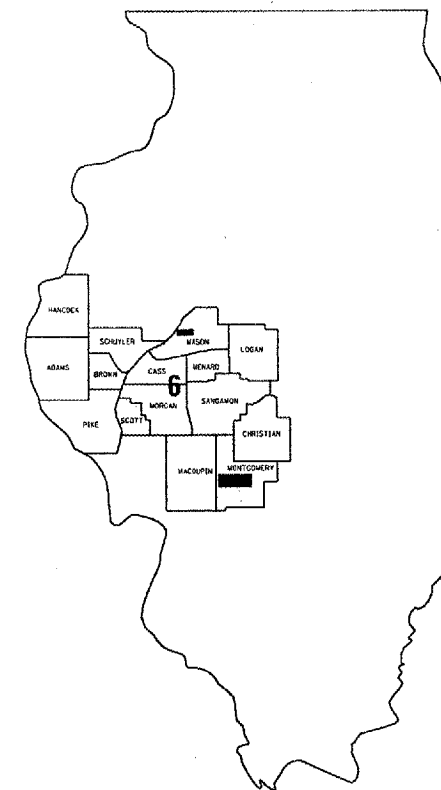


FOR INDEX OF SHEETS AND HIGHWAY  
STANDARDS, SEE SHEET 2.

ADT = 9,000

STATE OF ILLINOIS  
DEPARTMENT OF TRANSPORTATION  
DIVISION OF HIGHWAYS  
**PLANS FOR PROPOSED  
CONTRACT MAINTENANCE**  
**FAP ROUTE 325 (IL 16)**  
**SECTION (21)I-5**  
**MONTGOMERY COUNTY**  
**C96-018-07 / D96-007-07**



LOCATION OF SECTION INDICATED THUS: ■

LOCATION #1  
STRUCT. 068-0007

LOCATION #2  
STRUCT. 068-0008

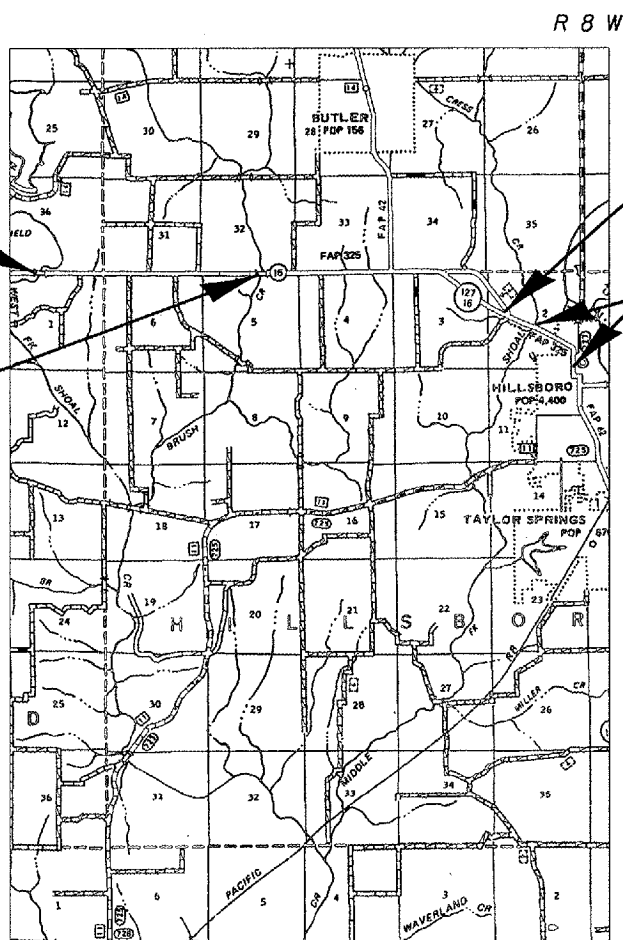
LOCATION #3  
CRESS CIRCLE RD.

LOCATION #4  
STRUCT. 068-0055  
TO WEST WOOD ST.

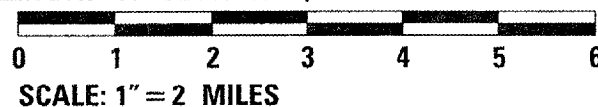
NOTE:  
SEE LOCATION MAP  
SHEET 7 OF 11 FOR  
STATIONS

**J.U.L.I.E.**  
**JOINT UTILITY LOCATION INFORMATION FOR EXCAVATION**  
1-800-892-0123

PLANS & CONTRACT TECHNICIAN: TIMOTHY SHARP  
PHONE: (217) 782-7743



GROSS LENGTH OF SECTION 31,441.00 FT = 5.955 MILES  
NET LENGTH OF SECTION 7,298.75 FT = 1.382 MILES



**CONTRACT NO. 72A83**

STATE OF ILLINOIS  
DEPARTMENT OF TRANSPORTATION  
DIVISION OF HIGHWAYS  
SUBMITTED FEB. 1, 20 07  
*Christ H Reed*  
DEPUTY DIRECTOR OF HIGHWAYS, REGION FOUR ENGINEER  
March 23, 20 07  
*Erin E. Harms*  
Interim ENGINEER OF DESIGN AND ENVIRONMENT  
March 23, 20 07  
*Milton R. See, P.E.*  
DIRECTOR, DIVISION OF HIGHWAYS

INDEX

1 COVER  
2 INDEX/STANDARDS/SIGNATURES  
3-4 QUANTITIES  
5-6 TYPICAL SECTIONS  
7 LOCATION MAP  
8 SCHEDULES  
9-12 BUTT JOINT DETAILS

STANDARDS

- 442201-02
- 701001-01
- 701006-02
- 701011-01
- 701201-02
- 701306-01
- 701501-03
- 702001-06
- 780001-01

NOTES:

SIZE AND LOCATION OF PATCHES TO BE DETERMINED IN THE FIELD BY THE RESIDENT ENGINEER.

NO PASSING ZONES TO BE FIELD VERIFIED BY THE BUREAU OF OPERATIONS. THE RESIDENT ENGINEER SHALL NOTIFY THE BUREAU OF OPERATIONS 14 DAYS PRIOR TO PERMANENT PAVEMENT MARKING.

<b>STATE OF ILLINOIS DEPARTMENT OF TRANSPORTATION DIVISION OF HIGHWAYS DISTRICT 6</b>	
EXAMINED	<u>Jan 31</u> 20 <u>07</u> <i>[Signature]</i> ENGINEER OF OPERATIONS
EXAMINED	<u>Jan 23</u> 20 <u>07</u> <i>[Signature]</i> ENGINEER OF PROGRAM IMPLEMENTATION
EXAMINED	<u>Jan 30</u> 20 <u>07</u> <i>[Signature]</i> ENGINEER OF PROGRAM DEVELOPMENT

INDEX/STANDARDS/SIGNATURES  
FAP 325 (IL 16)  
SECTION (2)I-5  
MONTGOMERY COUNTY

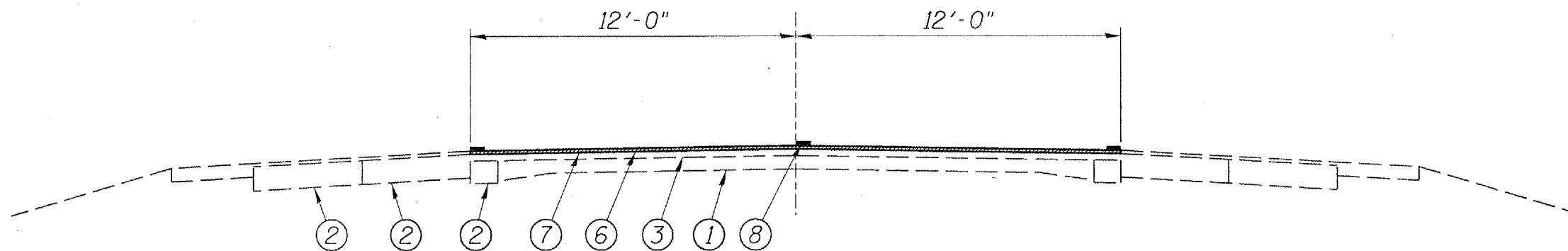
Rev.

S U M M A R Y O F Q U A N T I T I E S

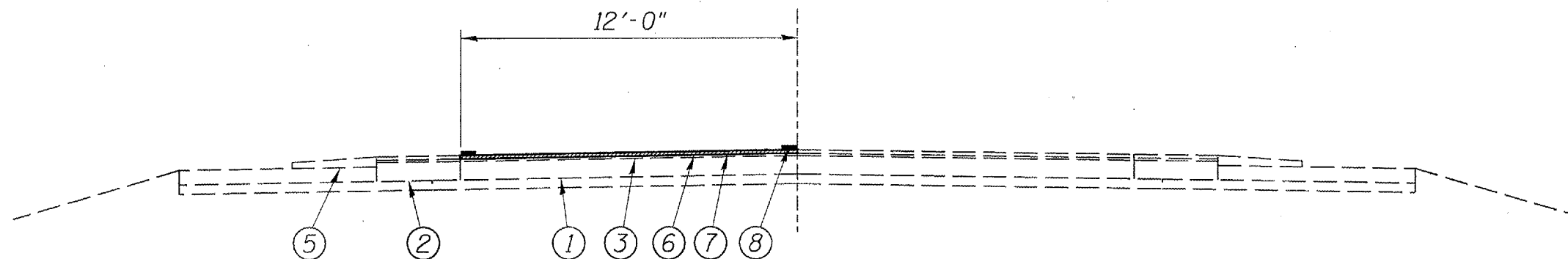
CODE NO.	ITEM	LOCATION #1	LOCATION #2	LOCATION #3	LOCATION #4	UNIT	100% STATE
							I000
							TOTAL QTY
40600200	BITUMINOUS MATERIALS (PRIME COAT)	0.8	0.8	0.9	3.3	TON	5.8
40600300	AGGREGATE (PRIME COAT)	4.0	4.0	4.9	17.1	TON	30.0
40600895	CONSTRUCTING TEST STRIP	0.25	0.25	0.25	0.25	EACH	1
40600990	TEMPORARY RAMP	27	27	13	27	SQ YD	94
40603540	POLYMERIZED HOT-MIX ASPHALT SURFACE COURSE, MIX D, N70	168	168	207.2	716.4	TON	1,259.6
44000155	HOT-MIX ASPHALT SURFACE REMOVAL 1 1/2"	2,000	2,000	2,467	8,528	SQ YD	14,995
48101200	AGGREGATE SHOULDERS, TYPE B			43.9	18.3	TON	62.2
67100100	MOBILIZATION	0.25	0.25	0.25	0.25	L SUM	1
70100450	TRAFFIC CONTROL AND PROTECTION, STANDARD 701201	0.25	0.25	0.25	0.25	L SUM	1
70100460	TRAFFIC CONTROL AND PROTECTION, STANDARD 701306	0.25	0.25	0.25	0.25	L SUM	1
70102620	TRAFFIC CONTROL AND PROTECTION, STANDARD 701501				1	L SUM	1
70300100	SHORT-TERM PAVEMENT MARKING	75	150	99	320	FOOT	644
70300230	TEMPORARY PAVEMENT MARKING - LINE 5"	1,688	3,232	3,066	10,127	FOOT	18,113

QUANTITIES  
FAP 325 (IL 16)  
SECTION (2)I-5  
MONTGOMERY COUNTY

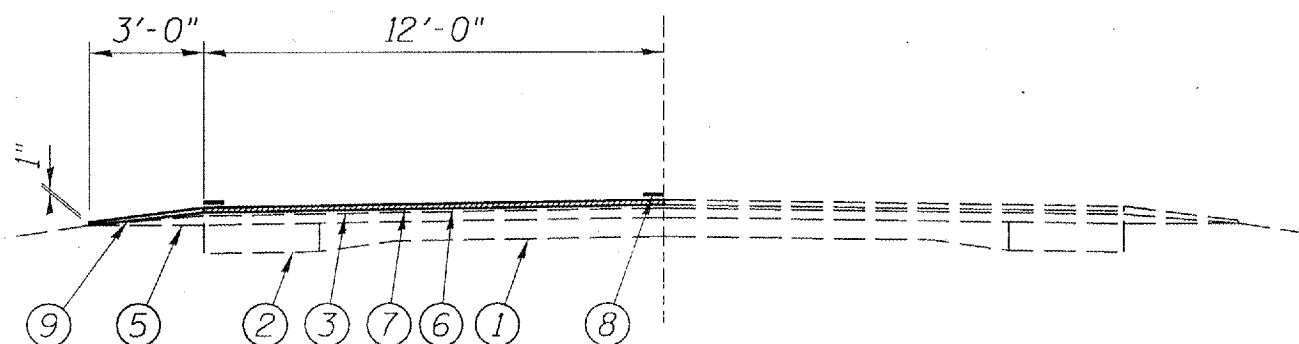




LOCATION #1  
STA. 160+61 TO 168+11



LOCATION #2  
STA. 270+18.75 TO 277+68.75  
STA. 279+62.83 TO 281+12.83

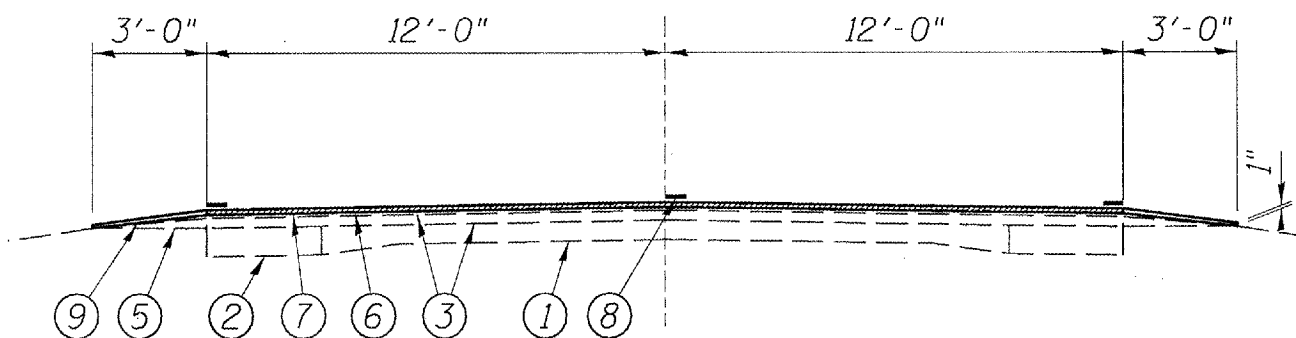


LOCATION #3  
STA. 403+06 TO 421+56

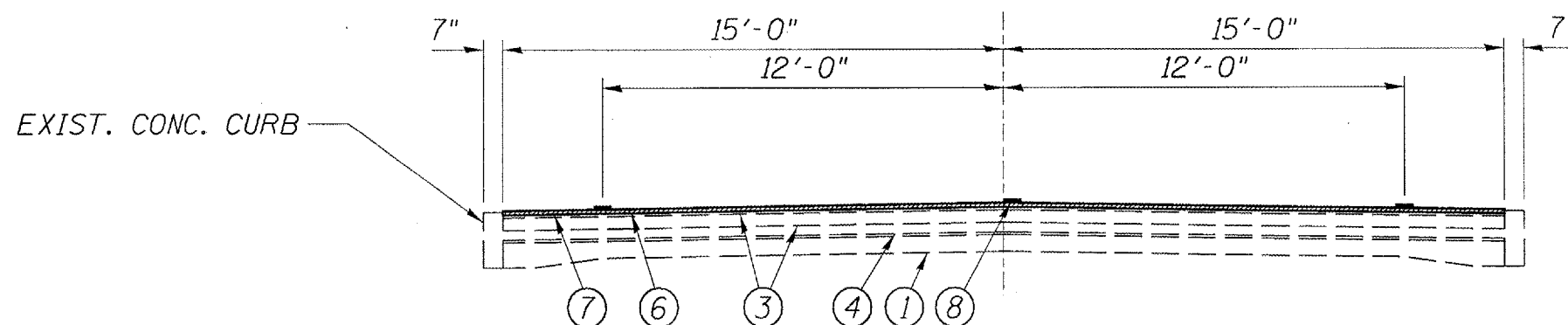
LEGEND

- 1 - EXIST. P.C.C. PAVEMENT
- 2 - EXIST. H.M.A. BASE COURSE WIDENING
- 3 - EXIST. H.M.A. SURFACE
- 4 - EXIST. BRICK PAVEMENT WITH WIDENING
- 5 - EXIST. AGGREGATE SHOULDER
- 6 - PROP. H.M.A. SURFACE REMOVAL 1 1/2"
- 7 - PROP. POLY. H.M.A. SURFACE COURSE, MIX D, N70 1 1/2"
- 8 - PROP. PAINT PAVEMENT MARKING - LINE 5"
- 9 - PROP. AGG. SHOULDER, TYPE B

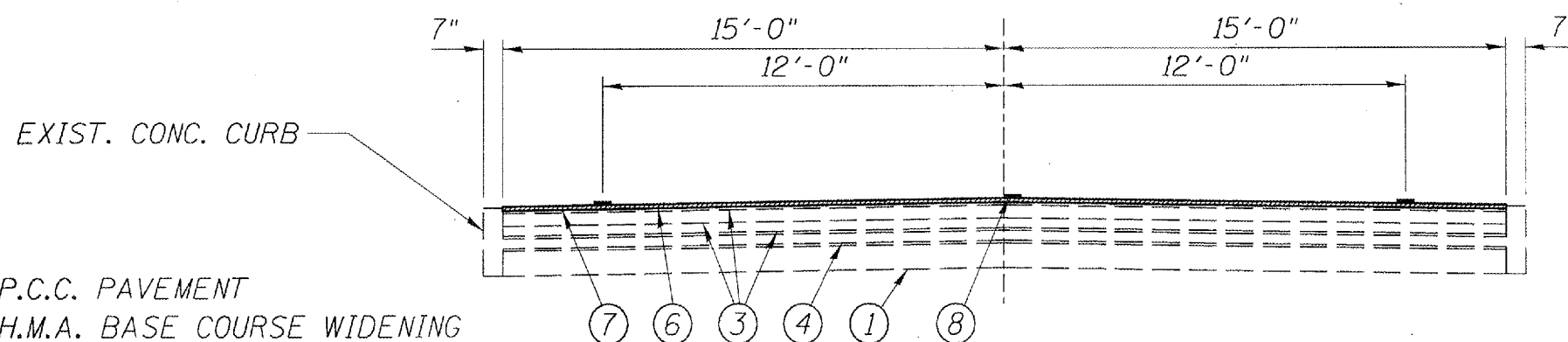
TYPICAL SECTIONS  
FAP 325 (IL 16)  
SECTION (21)I-5  
MONTGOMERY COUNTY



LOCATION #4  
STA. 15+89.5 TO 20+00  
STA. 447+14.5 TO 454+13



LOCATION #4  
STA. 10+00 TO 10+50  
STA. 18+09 TO 28+74



LOCATION #4  
STA. 10+50 TO 18+09

LEGEND

- 1 - EXIST. P.C.C. PAVEMENT
- 2 - EXIST. H.M.A. BASE COURSE WIDENING
- 3 - EXIST. H.M.A. SURFACE
- 4 - EXIST. BRICK PAVEMENT WITH WIDENING
- 5 - EXIST. AGGREGATE SHOULDER
- 6 - PROP. H.M.A. SURFACE REMOVAL 1 1/2"
- 7 - PROP. POLY. H.M.A. SURFACE COURSE, MIX D, N70 1 1/2"
- 8 - PROP. PAINT PAVEMENT MARKING - LINE 5"
- 9 - PROP. AGG. SHOULDER, TYPE B

TYPICAL SECTIONS  
FAP 325 (IL 16)  
SECTION (2)I-5  
MONTGOMERY COUNTY

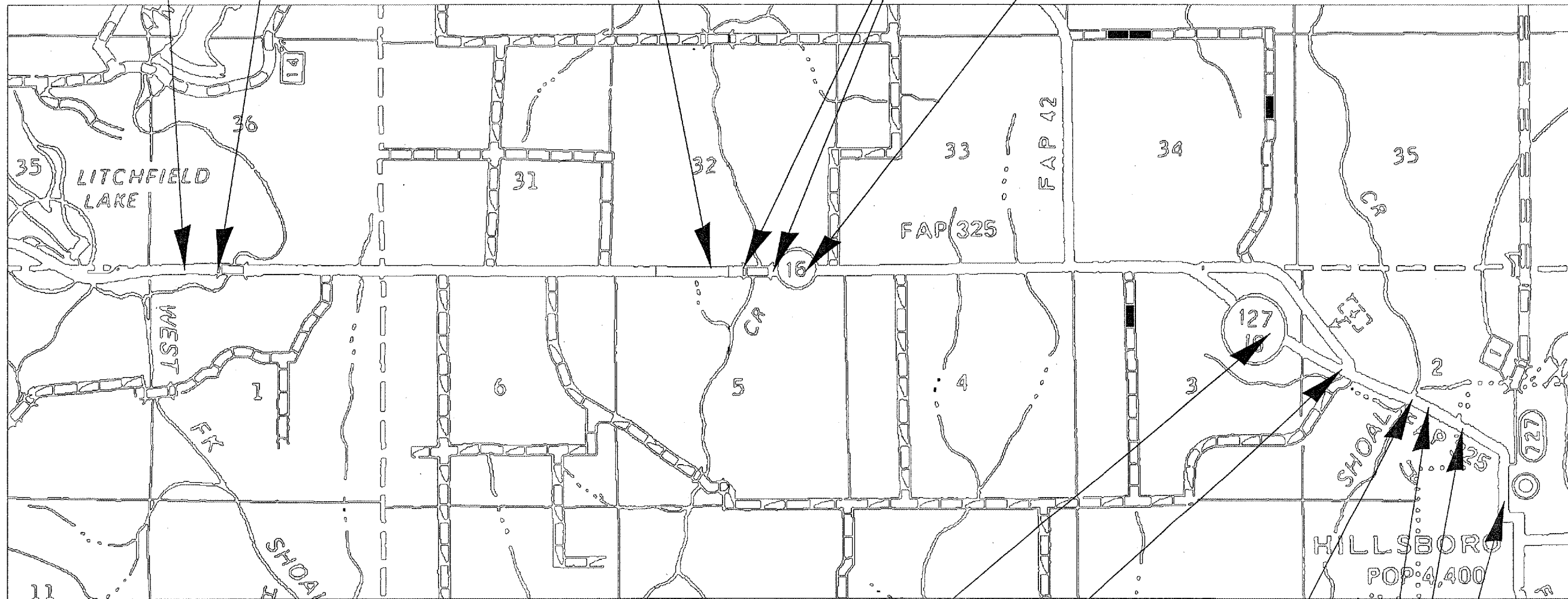
LOCATION #1  
BEGIN STA. 160+61

LOCATION #1  
END STA. 168+11

LOCATION #2  
BEGIN STA. 270+18.75

BRIDGE OMMISION  
STA. 277+68.75 TO  
279+62.83

LOCATION #2  
END STA. 281+12.83



LOCATION #3  
BEGIN STA. 403+06

LOCATION #3  
END STA. 421+56

LOCATION #4  
BEGIN STA. 15+89.5

STA. EQ. - 20+00bk  
= 447+14.15ah

STA. EQ. - 456+28  
= 10+00

LOCATION #4  
END STA. 28+74

LOCATION MAP  
FAP 325 (IL 16)  
SECTION (2)I-5  
MONTGOMERY COUNTY

PAVEMENT MARKING SCHEDULE			
STATION	TYPE	PAINT PVT MKG - LINE 5"	
		WHITE	YELLOW
LOCATION #1			
LT & RT 160+61 TO 168+11	EDGE LINE	1,500 FT	
160+61 TO 168+11	SKIP DASH		188 FT
LOCATION #2			
LT 270+18.75 TO 277+68.75	EDGE LINE	750 FT	
LT 279+62.83 TO 287+12.83	EDGE LINE	750 FT	
270+18.75 TO 272+26.75	SKIP DASH		52 FT
RT 272+26.75 TO 277+68.75	SKIP DASH		136 FT
LT 272+26.75 TO 277+68.75	NO PASS		542 FT
LT 279+62.83 TO 284+15.75	NO PASS		453 FT
RT 279+62.83 TO 283+29.75	SKIP DASH		92 FT
RT 283+29.75 TO 287+12.83	NO PASS		383 FT
LT 284+15.75 TO 287+12.83	SKIP DASH		74 FT
LOCATION #3			
LT 403+06 TO 421+56	EDGE LINE	1,850 FT	
LT 403+06 TO 413+11	NO PASS		1,005 FT
LT 413+11 TO 421+56	SKIP DASH		211 FT
LOCATION #4			
LT & RT 15+89.5 TO 20+00	EDGE LINE	821 FT	
15+89.5 TO 20+00	SKIP DASH		103 FT
STA. EQ. 20+00bk=447+14.5ah			
447+14.5 TO 456+28	EDGE LINE	1,827 FT	
447+14.5 TO 455+81	SKIP DASH		216 FT
LT & RT 455+81 TO 456+28	NO PASS		94 FT
STA. EQ. 456+28bk=10+00ah			
LT & RT 10+00 TO 28+74	EDGE LINE	3,748 FT	
LT & RT 10+00 TO 28+74	NO PASS		3,748 FT
DEDUCT FOR S.R.	SKIP DASH	(430)	
TOTALS		10,816 FT	7,297 FT

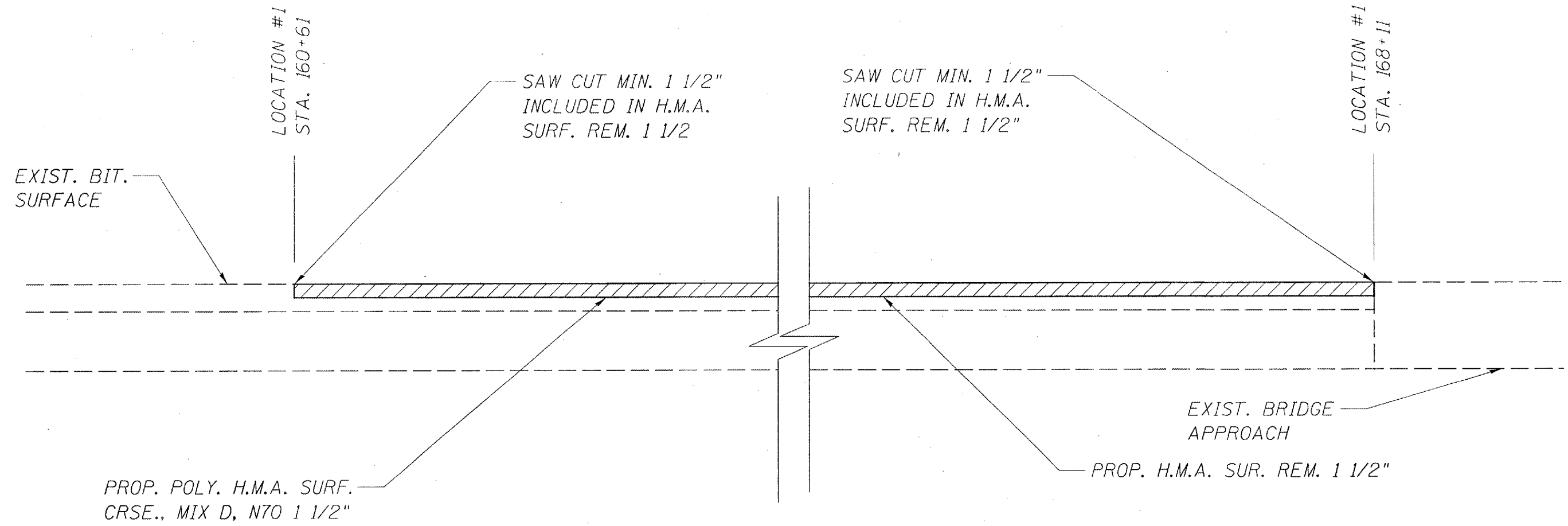
MIXTURE REQUIREMENTS	
THE FOLLOWING MIXTURE REQUIREMENTS ARE APPLICABLE FOR THIS PROJECT	
MIXTURE USE(S):	POLY. H.M.A. SURF. CRSE., MIX D, N70
AC/PG	SBS PG 70-22
DESIGN AIR VOIDS:	4.0% @ N DESIGN = 70
MIXTURE COMP:	IL 9.5 OR 12.5
FRICITION AGG:	MIX "D"

NOTES:

1. STATIONS ARE APPROXIMATE.
2. SEE SHEET 7 FOR STATION EQUATIONS.

SCHEDULES  
FAP 325 (IL 16)  
SECTION (2)I-5  
MONTGOMERY COUNTY

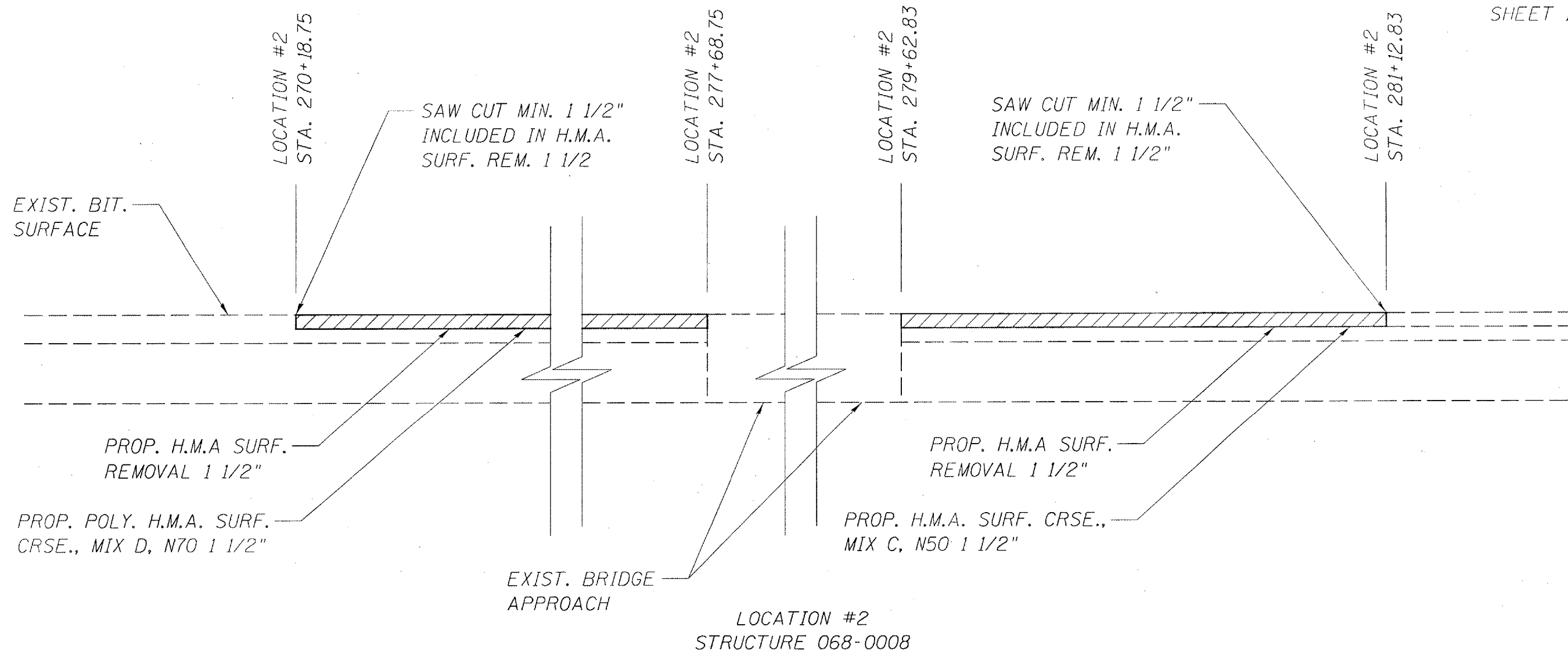




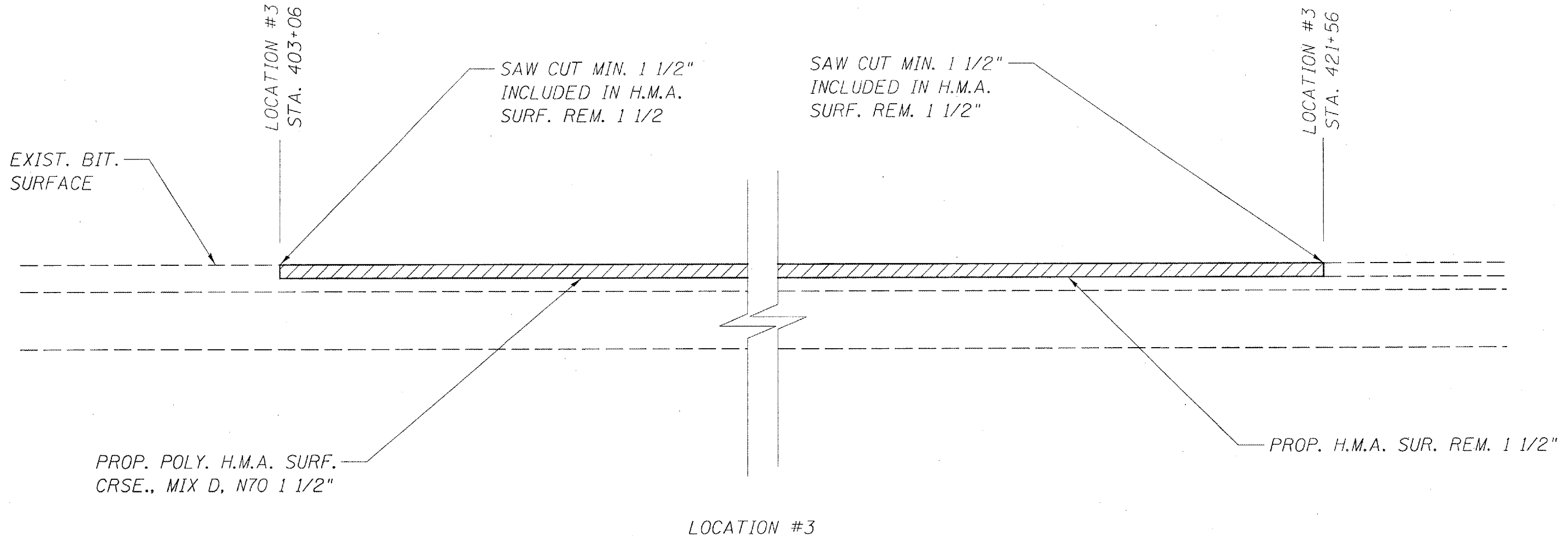
LOCATION #1

STRUCTURE 068-0007

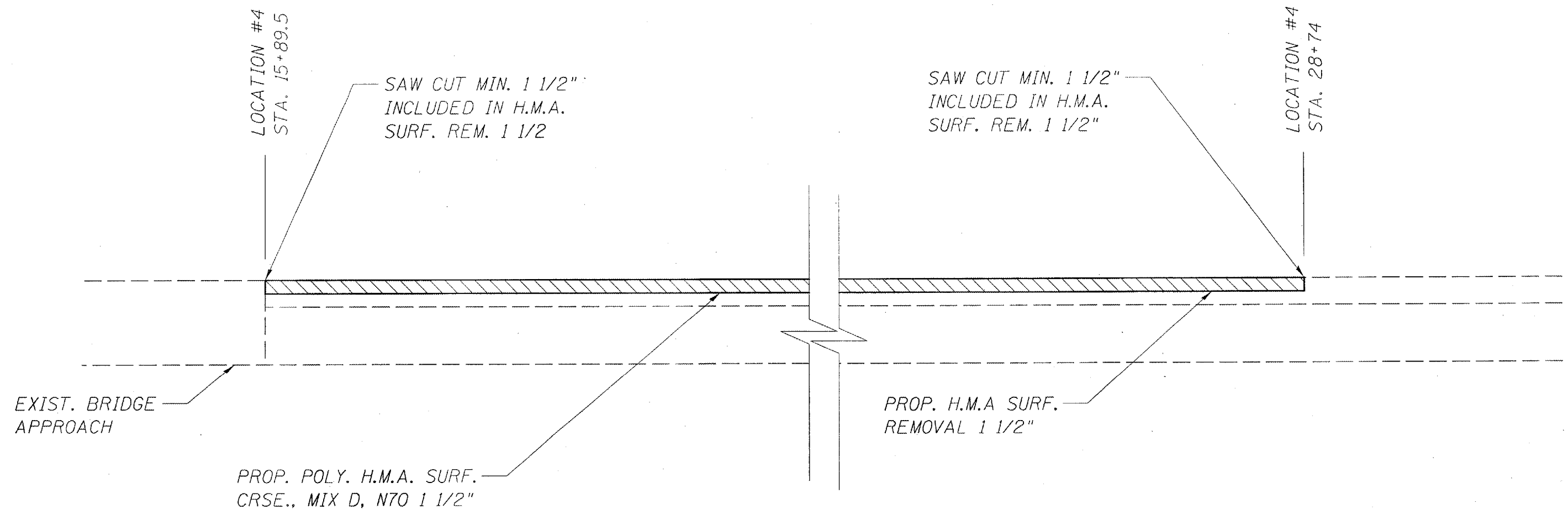
BUTT JOINT  
FAP 325 (IL 16)  
SECTION (2)I-5  
MONTGOMERY COUNTY



BUTT JOINT  
FAP 325 (IL 16)  
SECTION (2)I-5  
MONTGOMERY COUNTY



BUTT JOINT  
FAP 325 (IL 16)  
SECTION 1RS-3  
MONTGOMERY COUNTY



STRUCTURE 068-0055

LOCATION #4

BUTT JOINT  
FAP 325 (IL 16)  
SECTION (12)I-5  
MONTGOMERY COUNTY