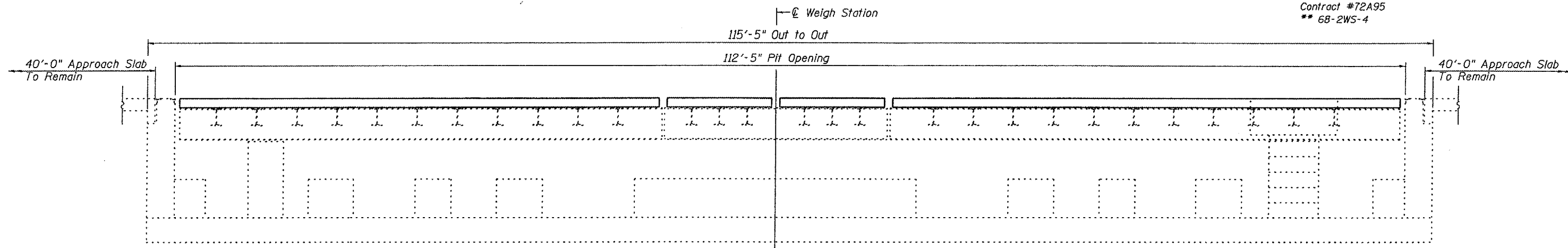


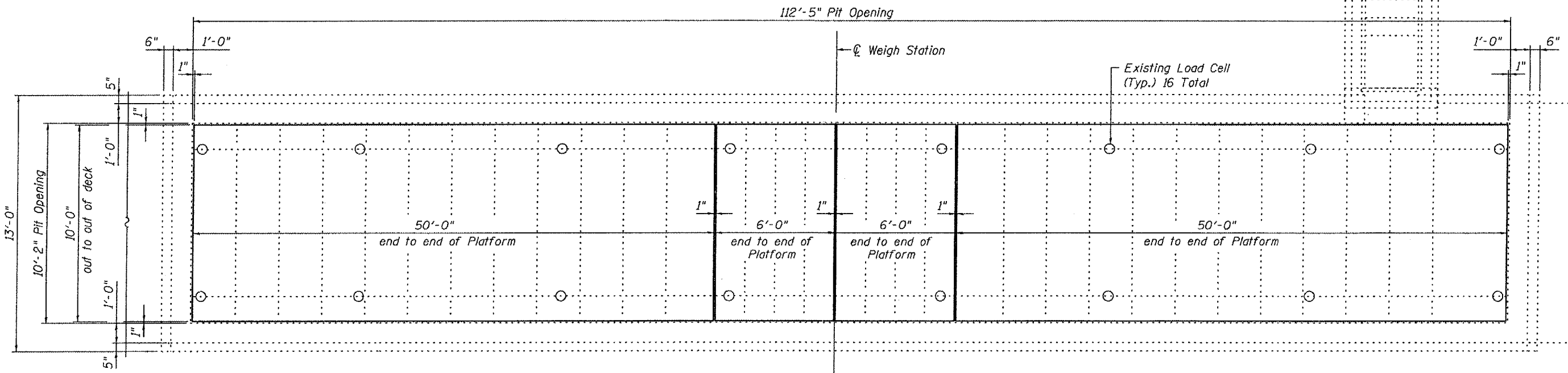
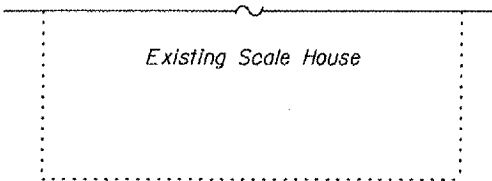
STATE OF ILLINOIS  
DEPARTMENT OF TRANSPORTATION

ROUTE NO.	SECTION	COUNTY	SHEETS	SHEET	SHEET NO.
F.A.I. 55	##	MONTGOMERY	7	5	2
FED. ROAD DIST. NO. 7	ILLINOIS	FED. AID PROJECT			

Contract #72A95  
\*\* 68-2WS-4



**LONGITUDINAL SECTION**



**PLAN**

DESIGNED	S.D.S.
CHECKED	C.W.C.
DRAWN	D.L.H.
CHECKED	S.D.S.

**WHKS & CO.**

ENGINEERS PLANNERS LAND SURVEYORS

MASON CITY, IA    DUBUQUE, IA    AMES, IA    SPRINGFIELD, IL    ROCHESTER, MN

**PLAN & ELEVATION**  
**LITCHFIELD WEIGH STATION**  
**F.A.I. ROUTE 55 SECTION 68-2WS-4**  
**MONTGOMERY COUNTY**  
**STA. 1836+54.94 (N.B. ONLY)**