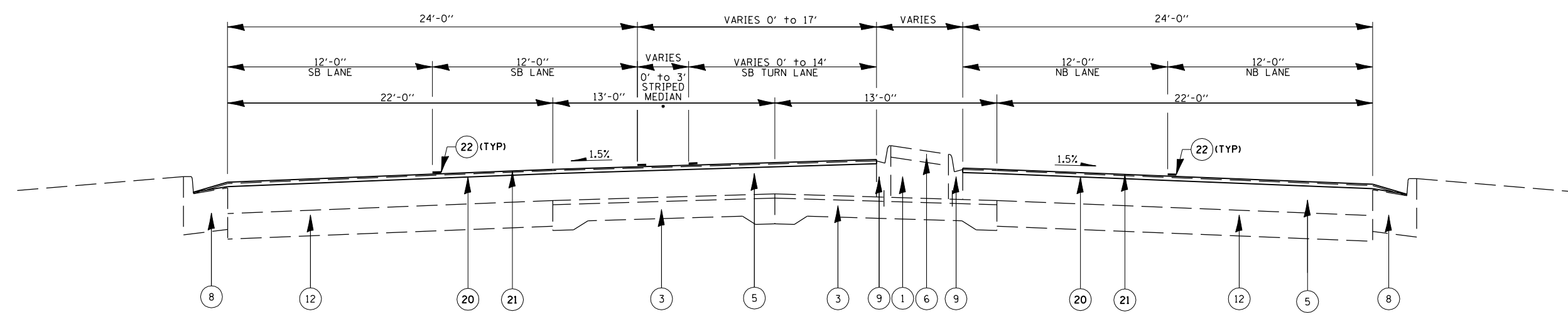


FAP RTE.	SECTION	COUNTY	TOTAL SHEETS	SHEET NO.
**	*	SANGAMON	14	7
STA.		TO STA.		
FED. ROAD DIST. NO.	ILLINOIS	FED. AID PROJECT		

* D6 DIRKSEN/CLEARLAKE RES 2007
 ** FAP 67 - CLEAR LAKE
 FAP 75, 668 - DIRKSEN



DIRKSEN PARKWAY
STA. 165 + 26.00 TO STA. 170 + 35.00 (NB)
STA. 166 + 30.00 TO STA. 170 + 35.00 (SB)
(ENDING OF THIS PROJECT = 167 + 35)

EXISTING LEGEND

- ① EXISTING SAND FILL
- ② EXISTING PCC BASE COURSE, 9"
- ③ EXISTING PAVEMENT, VARIABLE COMPOSITION
- ④ EXISTING STANDARD REINFORCED PCC PAVEMENT, 10"
- ⑤ EXISTING BITUMINOUS CONCRETE PAVEMENT
- ⑥ EXISTING PCC MEDIAN SURFACE, 4"
- ⑦ EXISTING COMBINATION CONCRETE CURB & GUTTER, TY. M-6.06
- ⑧ EXISTING COMBINATION CONCRETE CURB & GUTTER, TY. B-6.24
- ⑨ EXISTING CONCRETE CURB (DOWELLED)
- ⑩ EXISTING LONGITUDINAL JOINT
- ⑪ EXISTING PAVEMENT FABRIC
- ⑫ EXISTING BASE COURSE WIDENING, 9"

PROPOSED LEGEND

- ⑳ PROPOSED HOT MIX ASHALT SURFACE REMOVAL, 2"
- ㉑ PROPOSED POLYMERIZED HOT-MIX ASPHALT SURFACE COURSE, MIX "D", N90, 2"
- ㉒ PROPOSED THERMOPLASTIC PAVEMENT MARKING, 5" OR 6"

ILLINOIS DEPARTMENT OF TRANSPORTATION
TYPICAL CROSS SECTIONS
DIRKSEN PARKWAY
SECTION: D6 DIRKSEN/CLEARLAKE
RES 2007
SANGAMON COUNTY