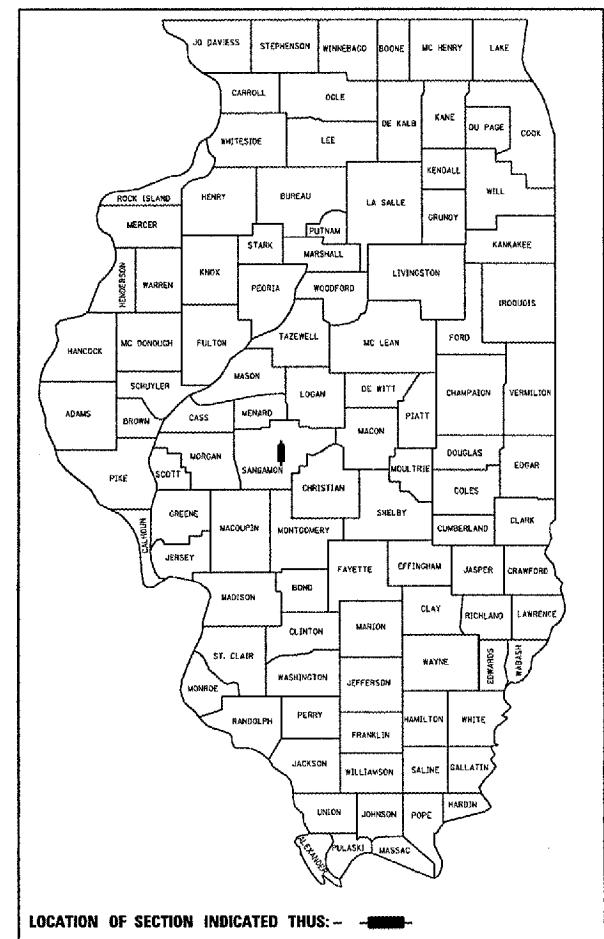


F.A.P. RTE.	SECTION	COUNTY	TOTAL SHEETS	SHEET NO.
.	..	SANGAMON	14	1

- FAP 668, 75 (DIRKSEN PKWY.) & FAP 67 (CLEAR LAKE AVE.)
- D-6 DIRKSEN/CLEARLAKE RES 2007

D-96-526-07



LOCATION OF SECTION INDICATED THUS: - [Symbol] -

STATE OF ILLINOIS
DEPARTMENT OF TRANSPORTATION

DIVISION OF HIGHWAYS

**PROPOSED
HIGHWAY PLANS**

FAP 668, 75 (DIRKSEN PKWY.) & FAP 67 (CLEAR LAKE AVE.)
SECTION D-6 DIRKSEN/CLEARLAKE RES 2007
PROJECT

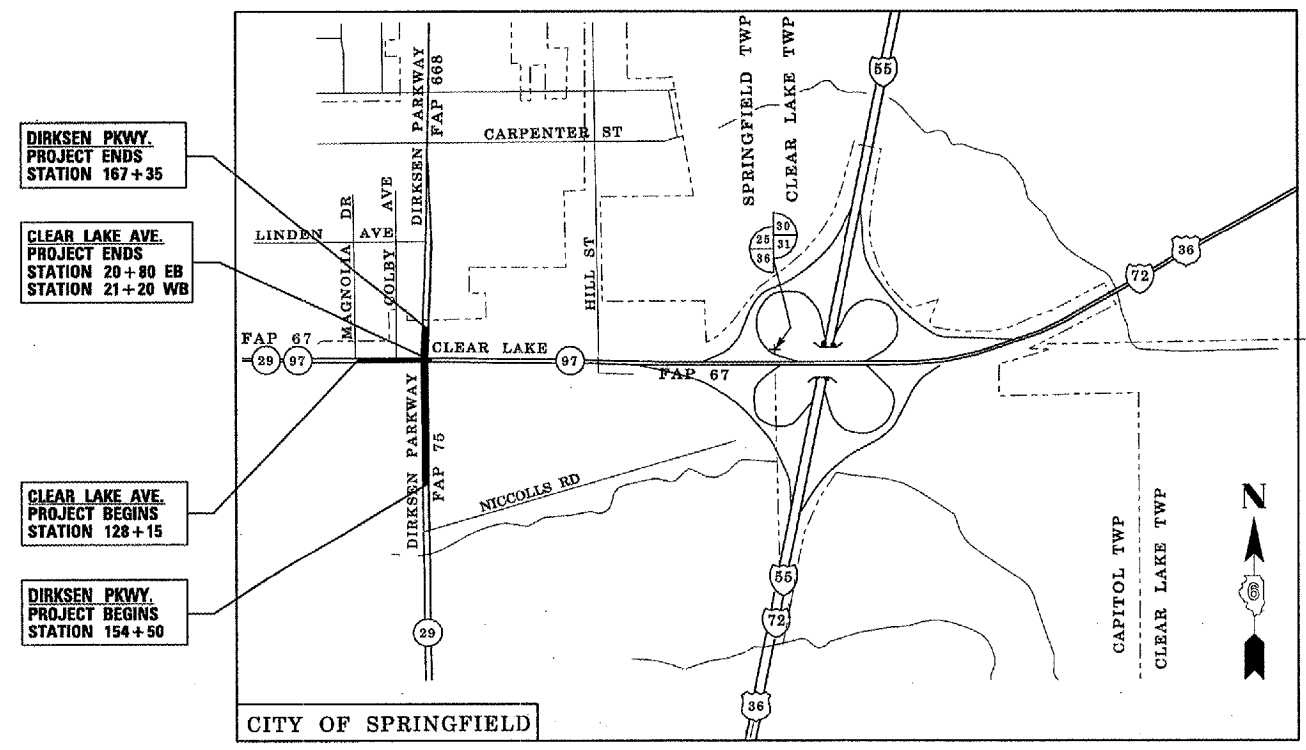
INTERSECTION OF DIRKSEN PKWY. & CLEAR LAKE AVE.
RESURFACING
SANGAMON COUNTY
C-96-550-07

INDEX OF SHEETS

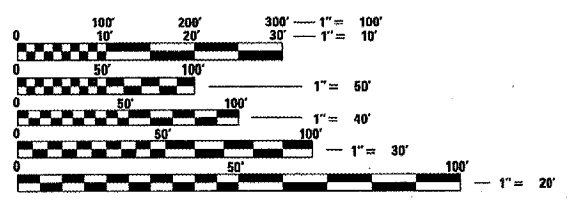
- 1 COVER SHEET
- 2 GENERAL NOTES
- 3 SUMMARY OF QUANTITIES
- 4-7 TYPICAL SECTIONS
- 8-9 SCHEDULE OF QUANTITIES
- 10-11 CLEAR LAKE AVE. PLAN SHEETS AND PAVEMENT MARKING DETAILS
- 12-14 DIRKSEN PKWY. PLAN PLAN SHEETS AND PAVEMENT MARKING DETAILS

HIGHWAY STANDARDS

- | | |
|-----------|-----------|
| 442201-02 | 702001-06 |
| 606001-03 | 780001-01 |
| 701101-01 | 781001-02 |
| 701106-01 | 000001-04 |
| 701601-04 | 001006 |
| 701701-04 | |
| 701426-02 | |



- DIRKSEN PKWY. PROJECT ENDS STATION 167+35
- CLEAR LAKE AVE. PROJECT ENDS STATION 20+80 EB STATION 21+20 WB
- CLEAR LAKE AVE. PROJECT BEGINS STATION 128+15
- DIRKSEN PKWY. PROJECT BEGINS STATION 154+50



FULL SIZE PLANS HAVE BEEN PREPARED USING STANDARD ENGINEERING SCALES. REDUCED SIZED PLANS WILL NOT CONFORM TO STANDARD SCALES. IN MAKING MEASUREMENTS ON REDUCED PLANS, THE ABOVE SCALES MAY BE USED.

J.U.L.I.E.
JOINT UTILITY LOCATION INFORMATION FOR EXCAVATION
1-800-892-0123

CONTRACT NO. 72A98

PROJECT ENGINEER: SAL MADONIA (217) 782-4761
SQUAD LEADER: MARCUS BRUCE (217) 524-0946

TOTAL LENGTH OF PROJECT = 1245 FEET = 0.236 MILES
HIGHWAY CLASSIFICATION = OTHER PRINCIPAL ARTERIAL
DIRKSEN PKWY. ADT = 21,000
CLEAR LAKE AVE. ADT = 23,200

STATE OF ILLINOIS
DEPARTMENT OF TRANSPORTATION
DIVISION OF HIGHWAYS

SUBMITTED FEB. 9, 2007
Christy M. Reed
DEPUTY DIRECTOR OF HIGHWAYS, REGION ENGINEER

March 23, 2007
Eric E. Harsh
ENGINEER OF DESIGN AND ENVIRONMENT

March 23, 2007
Milton R. Sees, P.E.
DIRECTOR OF HIGHWAYS, CHIEF ENGINEER

PRINTED BY THE AUTHORITY
OF THE STATE OF ILLINOIS

FAP RTE.	SECTION	COUNTY	TOTAL SHEETS	SHEET NO.
**	*	SANGAMON	14	2
STA. _____		TO STA. _____		
FED. ROAD DIST. NO. _____		ILLINOIS FED. AID PROJECT		

GENERAL NOTES

1. THICKNESS OF RESURFACING: THE THICKNESS OF THE REINFORCED CONCRETE OVERLAY SHOWN ON THE PLANS IS THE NOMINAL THICKNESS. DEVIATIONS FROM THE NOMINAL THICKNESS WILL BE PERMITTED WHEN SUCH DEVIATIONS OCCUR DUE TO IRREGULARITIES IN THE EXISTING BRIDGE DECK SURFACE ON WHICH THE OVERLAY IS PLACED.
2. ALL ELEVATIONS SHOWN ON THE PLANS ARE ESTABLISHED FROM U.S.G.S. MEAN SEA LEVEL DATUM.
3. ALL STATIONS AND OFFSET REFERENCES ARE TO THE ROADWAY CENTERLINE UNLESS OTHERWISE NOTED. THE STATE PLANE COORDINATE SYSTEM HAS BEEN USED FOR THE HORIZONTAL CONTROL.
4. THE LOCATIONS OF EXISTING WATER MAINS, GAS MAINS, SEWERS, ELECTRIC POWER LINES, TELEPHONE LINES AND OTHER UTILITIES AS SHOWN ON THE PLANS ARE BASED ON CAREFUL FIELD INVESTIGATION AND THE BEST INFORMATION AVAILABLE, BUT THEY ARE NOT GUARANTEED. IT SHALL BE THE RESPONSIBILITY OF THE CONTRACTOR TO ASCERTAIN THEIR EXACT LOCATION FROM THE UTILITY COMPANIES AND BY FIELD INSPECTION.
5. WHERE SECTION OR SUBSECTION MONUMENTS ARE ENCOUNTERED, THE ENGINEER SHALL BE NOTIFIED BEFORE SUCH MONUMENTS ARE REMOVED. THE CONTRACTOR SHALL PROTECT AND CAREFULLY PRESERVE ALL PROPERTY MARKERS AND MONUMENTS UNTIL THE OWNER, AN AUTHORIZED SURVEYOR, OR AGENT, HAS WITNESSED OR OTHERWISE REFERENCED THEIR LOCATION.
6. EXISTING ROAD SIGNS THAT CONFLICT WITH STAGE CONSTRUCTION TRAFFIC PATTERNS SHALL BE COVERED OR REMOVED UNTIL NORMAL TRAFFIC PATTERNS ARE RE-ESTABLISHED.
7. ACCESS TO ALL ENTRANCES AND SIDE ROADS SHALL BE MAINTAINED AT ALL TIMES.
8. ANY REFERENCE TO A STANDARD IN THESE PLANS SHALL BE INTERPRETED TO MEAN THE EDITION AS INDICATED BY THE SUB-NUMBERS LISTED IN THE INDEX OF SHEETS, OR THE COPY OF THE STANDARD INCLUDED IN THESE PLANS.
9. IN ADDITION TO FIELD SURVEYS AND AERIAL SURVEYS, PLAN DIMENSIONS AND DETAILS RELATIVE TO THE EXISTING FACILITIES HAVE BEEN TAKEN FROM EXISTING PLANS AND ARE SUBJECT TO CONSTRUCTION VARIATIONS. IT SHALL BE THE RESPONSIBILITY OF THE CONTRACTOR TO VERIFY SUCH DIMENSIONS AND DETAILS IN THE FIELD. SUCH VARIATIONS SHALL NOT BE A CAUSE FOR ADDITIONAL COMPENSATION DUE TO A CHANGE IN THE SCOPE OF WORK. HOWEVER, THE CONTRACTOR WILL BE PAID FOR THE QUANTITY ACTUALLY FURNISHED AT THE UNIT PRICE BID FOR THE WORK
10. ALL ENTRANCES AND SIDE ROAD BUTT JOINTS SHOWN IN THE PLANS ARE TO BE APPROVED BY THE ENGINEER PRIOR TO PLACEMENT.
11. THE CONTRACTOR SHALL USE A STREET SWEEPER MEETING THE SATISFACTION OF THE ENGINEER FOR CLEANING MILLED SURFACES PRIOR TO BITUMINOUS OVERLAY OPERATIONS - TRADITIONAL BROOMING WILL NOT BE ACCEPTABLE.
12. THE CONTRACTOR SHALL BE RESPONSIBLE FOR PROTECTING UTILITY PROPERTY FROM CONSTRUCTION OPERATIONS AS OUTLINED IN ARTICLE 107.31 OF THE STANDARD SPECIFICATIONS. THE J.U.L.I.E. NUMBER IS 1-800-892-0123. A MINIMUM OF FORTY-EIGHT HOURS ADVANCE NOTICE IS REQUIRED.

APPLICATION RATES

BITUMINOUS MATERIALS (PRIME COAT)	0.00057 tons/sq. yd.
AGGREGATE (PRIME COAT)	0.002 tons/sq. yd.
POLY HMA SURFACE COURSE, MIX "D", N90	112 lbs/sq. yd. inch

MIXTURE REQUIREMENTS

MIXTURE USE(S):	DIRKSEN PKWY. & CLEAR LAKE AVE.	(SIDEROADS, ENTRANCES)
	HMA SURF CSE	INCIDENTAL BITUMINOUS SURFACING
AC/PG	SBS PG 70-22	PG 64-22
DESIGN AIR VOIDS	4.0% @ N DESIGN = 90	4.0% @ N DESIGN = 50
MIXTURE COMPOSITION (GRADATION MIXTURE)	IL 9.5 OR IL 12.5	IL 9.5 OR IL 12.5
FRICTION AGGREGATE	MIXTURE "D"	MIXTURE "C"

DISTRICT SIX	
EXAMINED <u>Feb 9</u> 20 <u>07</u>	<i>[Signature]</i>
OPERATIONS ENGINEER	
EXAMINED <u>FEB 9</u> 20 <u>07</u>	<i>[Signature]</i>
PROGRAM IMPLEMENTATION ENGINEER	
EXAMINED <u>Feb 9</u> 20 <u>07</u>	<i>[Signature]</i>
PROGRAM DEVELOPMENT ENGINEER	

ILLINOIS DEPARTMENT OF TRANSPORTATION

GENERAL NOTES

**SECTION: D6 DIRKSEN/CLEARLAKE
RES 2007
SANGAMON COUNTY**

CONTRACT # 72A98

FAP RTE.	SECTION	COUNTY	TOTAL SHEETS	SHEET NO.
**	*	SANGAMON	14	3
STA.		TO STA.		
FED. ROAD DIST. NO.	ILLINOIS	FED. AID PROJECT		

* D6 DIRKSEN/CLEARLAKE RES 2007
 ** FAP 67 - CLEAR LAKE
 FAP 75, 668 - DIRKSEN

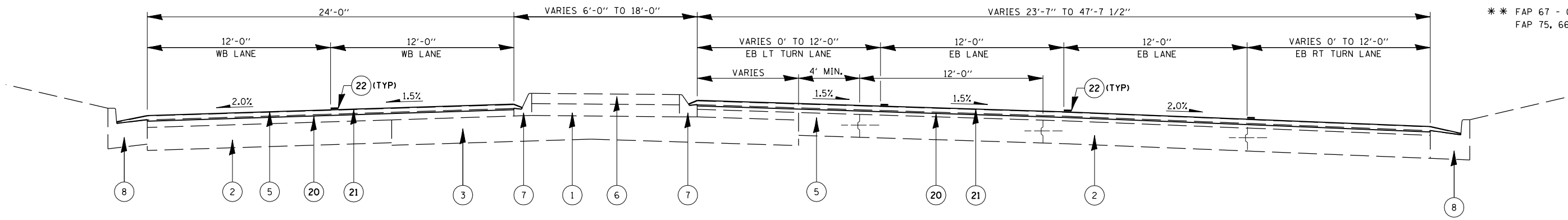
SUMMARY OF QUANTITIES			URBAN
CODE NO	PAY ITEM	UNIT	100% STATE 1000 QUANTITY
40600200	BITUMINOUS MATERIALS (PRIME COAT)	TON	8.7
40600300	AGGREGATE (PRIME COAT)	TON	30.4
40600895	CONSTRUCTING TEST STRIP	EACH	1
40600982	HOT-MIX ASPHALT SURFACE REMOVAL - BUTT JOINT	SO YD	378
40600990	TEMPORARY RAMP	SO YD	175
40603545	POLYMERIZED HOT-MIX ASPHALT SURFACE COURSE, MIX "D", N90	TON	1669
40800050	INCIDENTAL HOT-MIX ASPHALT SURFACING	TON	32
44001700	COMBINATION CONCRETE CURB AND GUTTER REMOVAL AND REPLACEMENT	FOOT	500
44000157	HOT-MIX ASPHALT SURFACE REMOVAL, 2"	SO YD	15178
44200156	PAVEMENT PATCHING, TYPE II, 13 INCH	SO YD	75
60255500	MANHOLES TO BE ADJUSTED	EACH	9
60266600	VALVE BOXES TO BE ADJUSTED	EACH	3
67100100	MOBILIZATION	L SUM	1
70102630	TRAFFIC CONTROL AND PROTECTION, STANDARD 701601	L SUM	1
70102635	TRAFFIC CONTROL AND PROTECTION, STANDARD 701701	L SUM	1
70103815	TRAFFIC CONTROL SURVEILLANCE	CAL DA	5
70300100	SHORT-TERM PAVEMENT MARKING	FOOT	1050
70301000	WORK ZONE PAVEMENT MARKING REMOVAL	SO FT	175
* 78000300	THERMOPLASTIC PAVEMENT MARKING - LINE 5"	FOOT	6440
* 78000400	THERMOPLASTIC PAVMENT MARKING - LINE 6"	FOOT	774
* 78000500	THERMOPLASTIC PAVEMENT MARKING - LINE 8"	FOOT	2754
* 78000600	THERMOPLASTIC PAVEMENT MARKING - LINE 12"	FOOT	603
78003100	PREFORMED PLASTIC PAVEMENT MARKING, TYPE B - LETTERS AND SYMBOLS	SO FT	280.8
78003180	PREFORMED PLASTIC PAVEMENT MARKING, TYPE B - LINE 24"	FOOT	216
* 78100100	RAISED REFLECTIVE PAVEMENT MARKER	EACH	103
78300200	RAISED REFLECTIVE PAVEMENT MARKER REMOVAL	EACH	103

* SPECIALTY ITEMS

ILLINOIS DEPARTMENT OF TRANSPORTATION
SUMMARY OF QUANTITIES
 SECTION: D6 DIRKSEN/CLEARLAKE
 RES 2007
 SANGAMON COUNTY

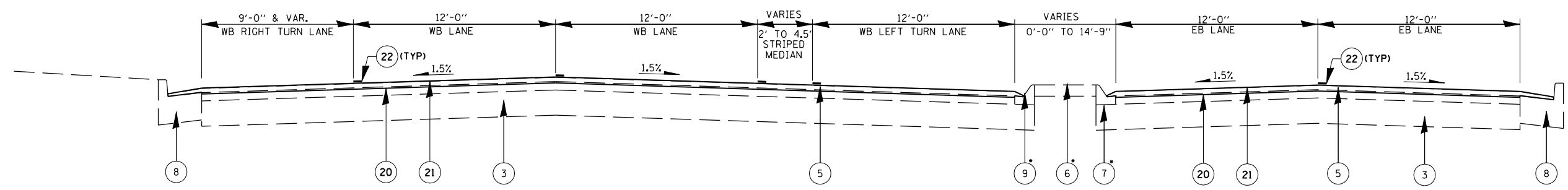
FAP RTE.	SECTION	COUNTY	TOTAL SHEETS	SHEET NO.
**	*	SANGAMON	14	4
STA.		TO STA.		
FED. ROAD DIST. NO.	ILLINOIS	FED. AID PROJECT		

* D6 DIRKSEN/CLEARLAKE RES 2007
 ** FAP 67 - CLEAR LAKE
 FAP 75, 668 - DIRKSEN



CLEAR LAKE AVENUE

**STA. 127+00.0 TO DIRKSEN PARKWAY
 (BEGINNING OF THIS PROJECT = STA. 128+15)**



CLEAR LAKE AVENUE

**DIRKSEN PARKWAY TO STA. 22+03.00
 (ENDING OF THIS PROJECT = STA. 20+80 EB & 21+20 WB)**

* EXIST. PCC CORRUGATED MEDIAN
 STA. 20+15.00 TO STA. 20+35.00

EXISTING LEGEND

- ① EXISTING SAND FILL
- ② EXISTING PCC BASE COURSE, 9"
- ③ EXISTING PAVEMENT, VARIABLE COMPOSITION
- ④ EXISTING STANDARD REINFORCED PCC PAVEMENT, 10"
- ⑤ EXISTING BITUMINOUS CONCRETE PAVEMENT
- ⑥ EXISTING PCC MEDIAN SURFACE, 4"
- ⑦ EXISTING COMBINATION CONCRETE CURB & GUTTER, TY. M-6.06
- ⑧ EXISTING COMBINATION CONCRETE CURB & GUTTER, TY. B-6.24
- ⑨ EXISTING CONCRETE CURB (DOWELLED)
- ⑩ EXISTING LONGITUDINAL JOINT
- ⑪ EXISTING PAVEMENT FABRIC
- ⑫ EXISTING BASE COURSE WIDENING, 9"

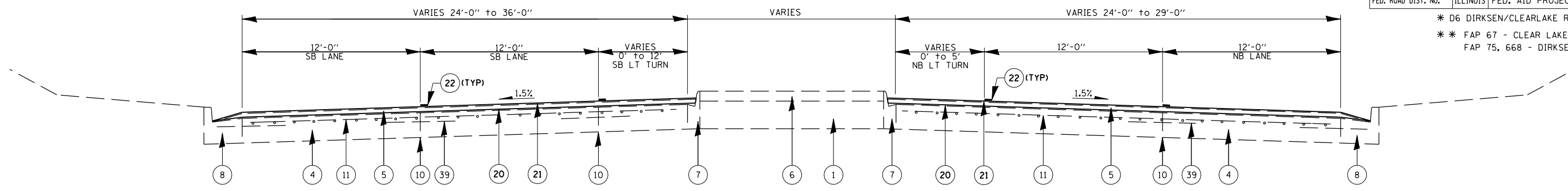
PROPOSED LEGEND

- ⑳ PROPOSED HOT MIX ASHALT SURFACE REMOVAL, 2"
- ㉑ PROPOSED POLYMERIZED HOT-MIX ASPHALT SURFACE COURSE, MIX "D", N90, 2"
- ㉒ PROPOSED THERMOPLASTIC PAVEMENT MARKING, 5" OR 6"

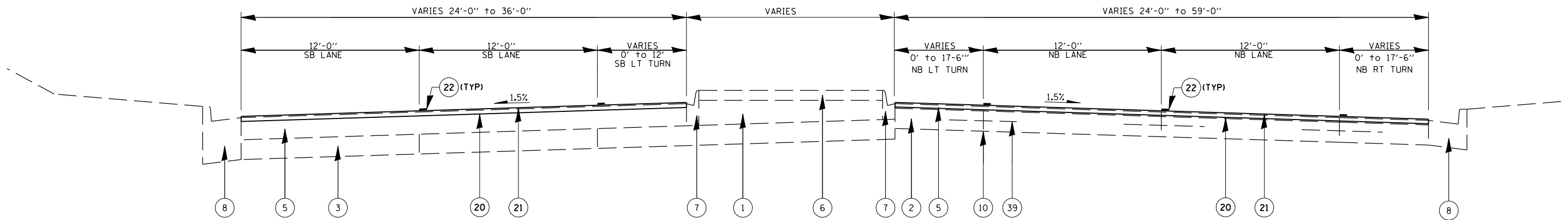
ILLINOIS DEPARTMENT OF TRANSPORTATION
**TYPICAL CROSS SECTIONS
 CLEAR LAKE AVENUE
 SECTION: D6 DIRKSEN/CLEARLAKE
 RES 2007
 SANGAMON COUNTY**

FAP RTE.	SECTION	COUNTY	TOTAL SHEETS	SHEET NO.
**	*	SANGAMON	14	5
STA.		TO STA.		
FED. ROAD DIST. NO.	ILLINOIS	FED. AID PROJECT		

* D6 DIRKSEN/CLEARLAKE RES 2007
 ** FAP 67 - CLEAR LAKE
 FAP 75, 668 - DIRKSEN



DIRKSEN PARKWAY
STA. 152+00.00 to STA. 154+90.00
(BEGINNING OF THIS PROJECT = 154+50)



DIRKSEN PARKWAY
STA. 154+90.00 to STA. 161+18.00 (NB)
STA. 154+90.00 to STA. 162+81.00 (SB)

EXISTING LEGEND

- ① EXISTING SAND FILL
- ② EXISTING PCC BASE COURSE, 9"
- ③ EXISTING PAVEMENT, VARIABLE COMPOSITION
- ④ EXISTING STANDARD REINFORCED PCC PAVEMENT, 10"
- ⑤ EXISTING BITUMINOUS CONCRETE PAVEMENT
- ⑥ EXISTING PCC MEDIAN SURFACE, 4"
- ⑦ EXISTING COMBINATION CONCRETE CURB & GUTTER, TY. M-6.06
- ⑧ EXISTING COMBINATION CONCRETE CURB & GUTTER, TY. B-6.24
- ⑨ EXISTING CONCRETE CURB (DOWELLED)
- ⑩ EXISTING LONGITUDINAL JOINT
- ⑪ EXISTING PAVEMENT FABRIC
- ⑫ EXISTING BASE COURSE WIDENING, 9"

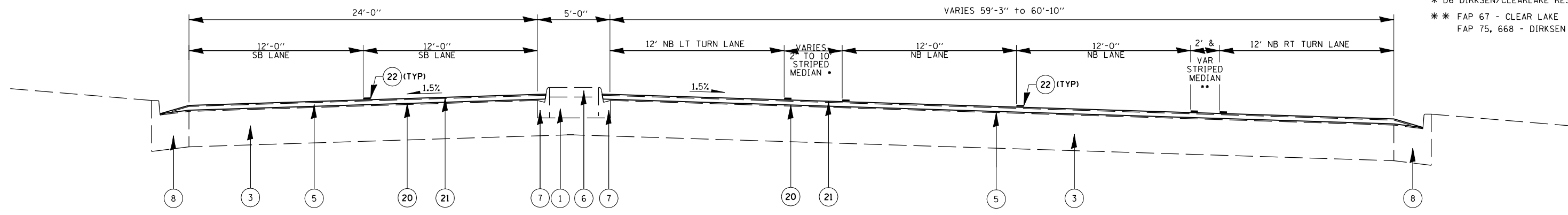
PROPOSED LEGEND

- ⑳ PROPOSED HOT MIX ASHALT SURFACE REMOVAL, 2"
- ㉑ PROPOSED POLYMERIZED HOT-MIX ASPHALT SURFACE COURSE, MIX "D", N90, 2"
- ㉒ PROPOSED THERMOPLASTIC PAVEMENT MARKING, 5" OR 6"

ILLINOIS DEPARTMENT OF TRANSPORTATION
TYPICAL CROSS SECTIONS
DIRKSEN PARKWAY
SECTION: D6 DIRKSEN/CLEARLAKE
RES 2007
SANGAMON COUNTY

FAP RTE.	SECTION	COUNTY	TOTAL SHEETS	SHEET NO.
**	*	SANGAMON	14	6
STA.		TO STA.		
FED. ROAD DIST. NO.	ILLINOIS	FED. AID PROJECT		

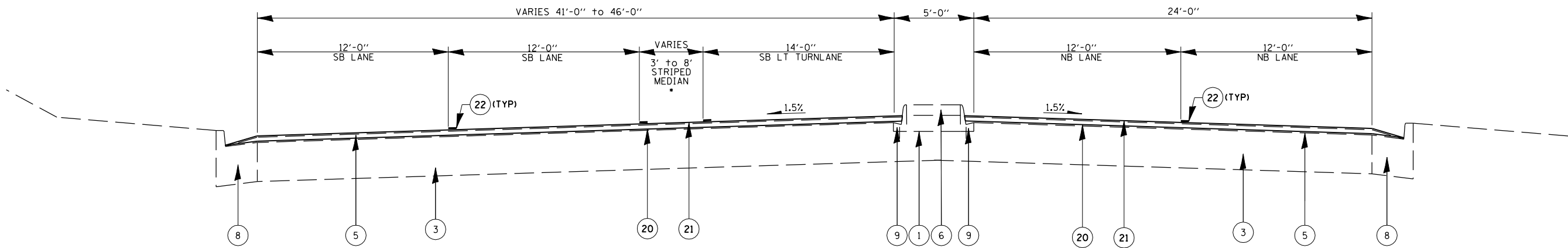
* D6 DIRKSEN/CLEARLAKE RES 2007
 ** FAP 67 - CLEAR LAKE
 FAP 75, 668 - DIRKSEN



• STA. 161+18.00 TO STA. 163+40.00

•• STA. 161+80.00 TO STA. 163+40.00

DIRKSEN PARKWAY
STA. 161+18.00 to CLEAR LAKE AVENUE (NB)
STA. 162+81.00 to CLEAR LAKE AVENUE (SB)



• STA. 164+16.00 TO STA. 166+30.00

DIRKSEN PARKWAY
CLEAR LAKE AVENUE to STA. 165+26.00 (NB)
CLEAR LAKE AVENUE to STA. 166+30.00 (SB)

EXISTING LEGEND

- ① EXISTING SAND FILL
- ② EXISTING PCC BASE COURSE, 9"
- ③ EXISTING PAVEMENT, VARIABLE COMPOSITION
- ④ EXISTING STANDARD REINFORCED PCC PAVEMENT, 10"
- ⑤ EXISTING BITUMINOUS CONCRETE PAVEMENT
- ⑥ EXISTING PCC MEDIAN SURFACE, 4"
- ⑦ EXISTING COMBINATION CONCRETE CURB & GUTTER, TY. M-6.06
- ⑧ EXISTING COMBINATION CONCRETE CURB & GUTTER, TY. B-6.24
- ⑨ EXISTING CONCRETE CURB (DOWELLED)
- ⑩ EXISTING LONGITUDINAL JOINT
- ⑪ EXISTING PAVEMENT FABRIC
- ⑫ EXISTING BASE COURSE WIDENING, 9"

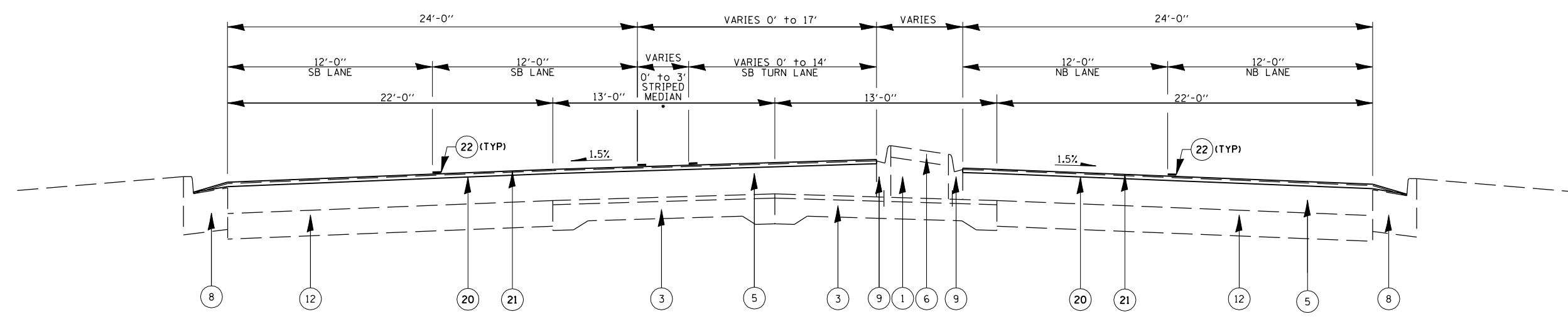
PROPOSED LEGEND

- ⑳ PROPOSED HOT MIX ASHALT SURFACE REMOVAL, 2"
- ㉑ PROPOSED POLYMERIZED HOT-MIX ASPHALT SURFACE COURSE, MIX "D", N90, 2"
- ㉒ PROPOSED THERMOPLASTIC PAVEMENT MARKING, 5" OR 6"

ILLINOIS DEPARTMENT OF TRANSPORTATION
TYPICAL CROSS SECTIONS
DIRKSEN PARKWAY
SECTION: D6 DIRKSEN/CLEARLAKE
RES 2007
SANGAMON COUNTY

FAP RTE.	SECTION	COUNTY	TOTAL SHEETS	SHEET NO.
**	*	SANGAMON	14	7
STA.		TO STA.		
FED. ROAD DIST. NO.	ILLINOIS	FED. AID PROJECT		

* D6 DIRKSEN/CLEARLAKE RES 2007
 ** FAP 67 - CLEAR LAKE
 FAP 75, 668 - DIRKSEN



DIRKSEN PARKWAY
STA. 165 + 26.00 TO STA. 170 + 35.00 (NB)
STA. 166 + 30.00 TO STA. 170 + 35.00 (SB)
(ENDING OF THIS PROJECT = 167 + 35)

EXISTING LEGEND

- ① EXISTING SAND FILL
- ② EXISTING PCC BASE COURSE, 9"
- ③ EXISTING PAVEMENT, VARIABLE COMPOSITION
- ④ EXISTING STANDARD REINFORCED PCC PAVEMENT, 10"
- ⑤ EXISTING BITUMINOUS CONCRETE PAVEMENT
- ⑥ EXISTING PCC MEDIAN SURFACE, 4"
- ⑦ EXISTING COMBINATION CONCRETE CURB & GUTTER, TY. M-6.06
- ⑧ EXISTING COMBINATION CONCRETE CURB & GUTTER, TY. B-6.24
- ⑨ EXISTING CONCRETE CURB (DOWELLED)
- ⑩ EXISTING LONGITUDINAL JOINT
- ⑪ EXISTING PAVEMENT FABRIC
- ⑫ EXISTING BASE COURSE WIDENING, 9"

PROPOSED LEGEND

- ⑳ PROPOSED HOT MIX ASHALT SURFACE REMOVAL, 2"
- ㉑ PROPOSED POLYMERIZED HOT-MIX ASPHALT SURFACE COURSE, MIX "D", N90, 2"
- ㉒ PROPOSED THERMOPLASTIC PAVEMENT MARKING, 5" OR 6"

ILLINOIS DEPARTMENT OF TRANSPORTATION
TYPICAL CROSS SECTIONS
DIRKSEN PARKWAY
SECTION: D6 DIRKSEN/CLEARLAKE
RES 2007
SANGAMON COUNTY

FAP RTE.	SECTION	COUNTY	TOTAL SHEETS	SHEET NO.
**	*	SANGAMON	14	8

STA.	TO STA.
FED. ROAD DIST. NO.	ILLINOIS FED. AID PROJECT

* D6 DIRKSEN/CLEARLAKE RES 2007
 ** FAP 67 - CLEAR LAKE
 FAP 75, 668 - DIRKSEN

PAVING SCHEDULE						
LOCATION	STATION RANGE	PRIME COAT		POLY. HOT-MIX ASPHALT SURFACE COURSE MIX "D", N90 TONS	INCIDENTAL HOT-MIX ASPHALT RESURFACING TONS	HOT-MIX ASPHALT SURFACE REMOVAL - TWO INCHES SQUARE YARDS
		BIT. MAT. TONS	AGGREGATE TONS			
CLEARLAKE/ DIRKSEN	INTERSECTION	0.89	3.13	175.2		1,564.0
CLEARLAKE, W. B.	128+15 TO 132+02	0.68	2.39	133.8		1,195.0
CLEARLAKE, W. B.	20+19 TO 21+20	0.38	1.34	75.0		669.6
CLEARLAKE, E. B.	128+15 TO 132+02	1.05	3.70	207.2		1,850.4
CLEARLAKE, E. B.	20+19 TO 20+80	0.19	0.66	37.0		330.8
DIRKSEN, S. B.	154+50 TO 163+02	1.55	5.44	304.8		2,721.0
DIRKSEN, S. B.	164+38 TO 167+35	0.81	2.84	159.1		1,420.8
DIRKSEN, N. B.	154+50 TO 163+02	2.35	8.24	461.2		4,117.6
DIRKSEN, N. B.	164+38 TO 167+35	0.59	2.06	115.4		1,030.4
SIDEROADS		0.08	0.28		15.6	138.9
ENTRANCES		0.08	0.28		15.6	138.9
TOTALS		8.7	30.4	1669	32	15178

RAISED REFLECTIVE PAVEMENT MARKER		
LOCATION	RAISED REFL. ECTIVE PAYMENT MARKER (EACH)	RAISED REFL. ECTIVE PAYMENT MARKER REMOVAL (EACH)
S. LEG DIRKSEN PARKWAY	49	49
N. LEG DIRKSEN PARKWAY	19	19
W. LEG CLEAR LAKE AVENUE	23	23
E. LEG CLEAR LAKE AVENUE	12	12
TOTALS	103	103

HMA SURFACE REMOVAL - BUTT JOINT			
STATION	ROADWAY	DIRECTION	UNITS - SQ YD
154+50	DIRKSEN	NORTHBOUND	28
	DIRKSEN	SOUTHBOUND	30
167+35	DIRKSEN	NORTHBOUND	30
	DIRKSEN	SOUTHBOUND	30
128+15	CLEARLAKE	EASTBOUND	27
	CLEARLAKE	WESTBOUND	27
20+80	CLEARLAKE	EASTBOUND	36
	CLEARLAKE	WESTBOUND	56
SIDEROADS			57
ENTRANCES			57
TOTAL			378

ADJUSTMENTS			
ROADWAY	QUADRANT	WATER VALVES TBA - EACH	MANHOLES TBA - EACH
CLEARLAKE	WEST LEG	3	4
CLEARLAKE	EAST LEG		5
TOTALS		3	9

ILLINOIS DEPARTMENT OF TRANSPORTATION
SCHEDULE OF QUANTITIES
**SECTION: D6 DIRKSEN/CLEARLAKE
 RES 2007
 SANGAMON COUNTY**

FAP RTE.	SECTION	COUNTY	TOTAL SHEETS	SHEET NO.
**	*	SANGAMON	14	9
STA.		TO STA.		
FED. ROAD DIST. NO.	ILLINOIS	FED. AID PROJECT		

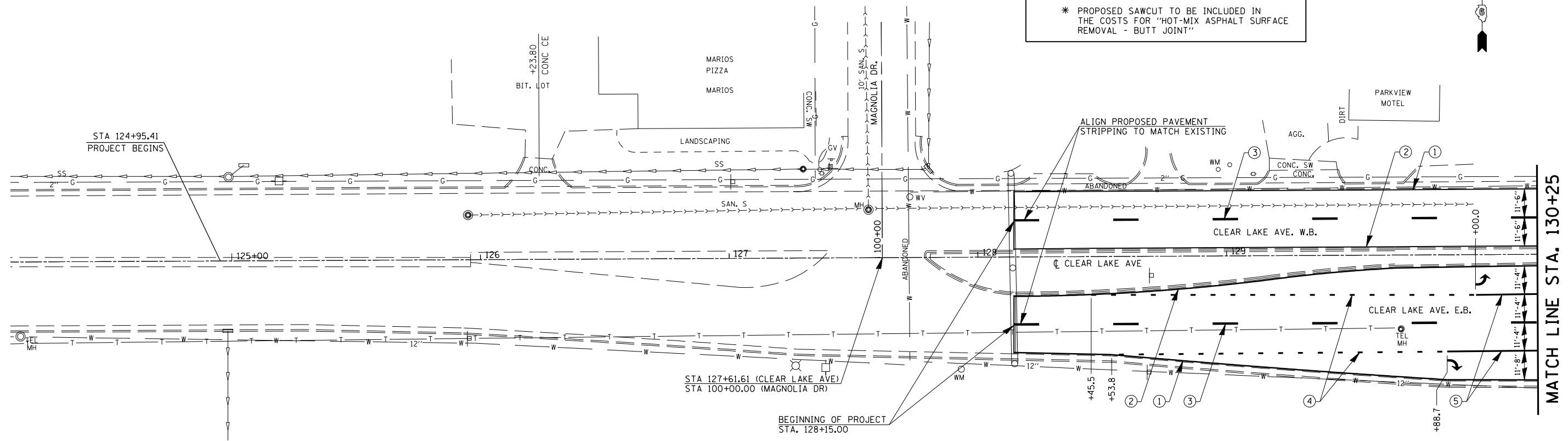
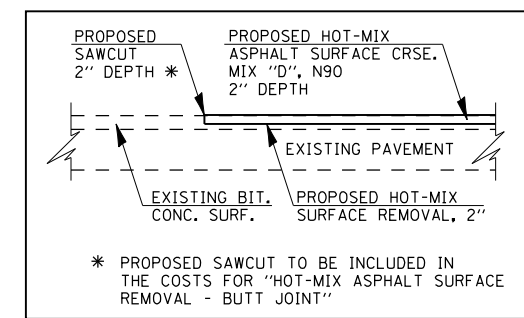
* D6 DIRKSEN/CLEARLAKE RES 2007
 ** FAP 67 - CLEAR LAKE
 FAP 75, 668 - DIRKSEN

STRIPING SCHEDULE										
ROADWAY	LOCATION	THERMOPLASTIC - LINE 5" - FOOT	THERMOPLASTIC PAVMENT MARKING -					PERFORMED PAVEMENT MARKING -		
			LINE 5" - CL FOOT	LINE 6" (SKIP-DASH) FOOT	LINE 6" (SOLID) FOOT	LINE 8" FOOT	LINE 12" FOOT	LINE 24" FOOT	L & S SQ FT	
	NW QUAD (OUTSIDE EDGE)	696							54	46.8
	SW QUAD (OUTSIDE EDGE)	1253							54	124.8
	NE QUAD (OUTSIDE EDGE)	384							54	15.6
	SE QUAD (OUTSIDE EDGE)	912							54	93.6
CLEARLAKE	WEST MEDIAN	775								
CLEARLAKE	EAST MEDIAN	175								
DIRKSEN	NORTH MEDIAN	620								
DIRKSEN	SOUTH MEDIANS	786								
INTERSECTION	NW ISLAND					82		5		
INTERSECTION	SW ISLAND					157		31		
INTERSECTION	NE ISLAND					170		26		
INTERSECTION	SE ISLAND					509		65		
CLEARLAKE	EAST LEG PAINTED MEDIAN					233		17		
DIRKSEN	NORTH LEG PAINTED MEDIAN					430		56		
DIRKSEN	SOUTH LEG PAINTED MEDIAN					453		57		
CLEARLAKE	WEST LEG		194	39	385					
CLEARLAKE	EAST LEG		42		59					
DIRKSEN	NORTH LEG		157	25						
DIRKSEN	SOUTH LEG		446	139	127	720		346		
TOTALS		5601	839	203	571	2754	603	216	280.8	

ILLINOIS DEPARTMENT OF TRANSPORTATION
SCHEDULE OF QUANTITIES
SECTION: D6 DIRKSEN/CLEARLAKE
RES 2007
SANGAMON COUNTY

FAP RTE.	SECTION	COUNTY	TOTAL SHEETS	SHEET NO.
**	*	SANGAMON	14	10
STA.		TO STA.		
FED. ROAD DIST. NO.		ILLINOIS	FED. AID PROJECT	

* D6 DIRKSEN/CLEARLAKE RES 2007
 ** FAP 67 - CLEAR LAKE
 FAP 75, 668 - DIRKSEN



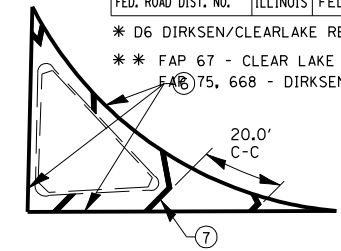
LEGEND	
①	5" SOLID THERMOPLASTIC LINE, WHITE
②	5" SOLID THERMOPLASTIC LINE, YELLOW
③	5" SKIP-DASH (30' SKIP, 10' LINE) THERMOPLASTIC LINE, WHITE
④	6" SKIP-DASH (6' SKIP, 2' LINE) THERMOPLASTIC LINE, WHITE
⑤	6" SOLID THERMOPLASTIC LINE, WHITE
⑥	8" SOLID THERMOPLASTIC LINE, WHITE
⑦	12" SOLID THERMOPLASTIC DIAGONAL LINE, WHITE
⑧	24" PREFORMED PLASTIC, TYPE B STOP BARS
↪	PREFORMED PLASTIC, TYPE B, L&S (15.6 sq ft)

NOTE:
 ALL STATION AND OFFSET CALLOUTS ON THIS SHEET ARE REFERENCED OFF OF THE CENTERLINE FOR CLEARLAKE AVENUE.

ILLINOIS DEPARTMENT OF TRANSPORTATION
PLAN & PAVEMENT MARKING DETAILS
CLEAR LAKE AVENUE
SECTION: D6 DIRKSEN/CLEARLAKE
RES 2007
SANGAMON COUNTY

FAP RTE.	SECTION	COUNTY	TOTAL SHEETS	SHEET NO.
**	*	SANGAMON	14	11
STA.		TO STA.		
FED. ROAD DIST. NO.	ILLINOIS	FED. AID PROJECT		

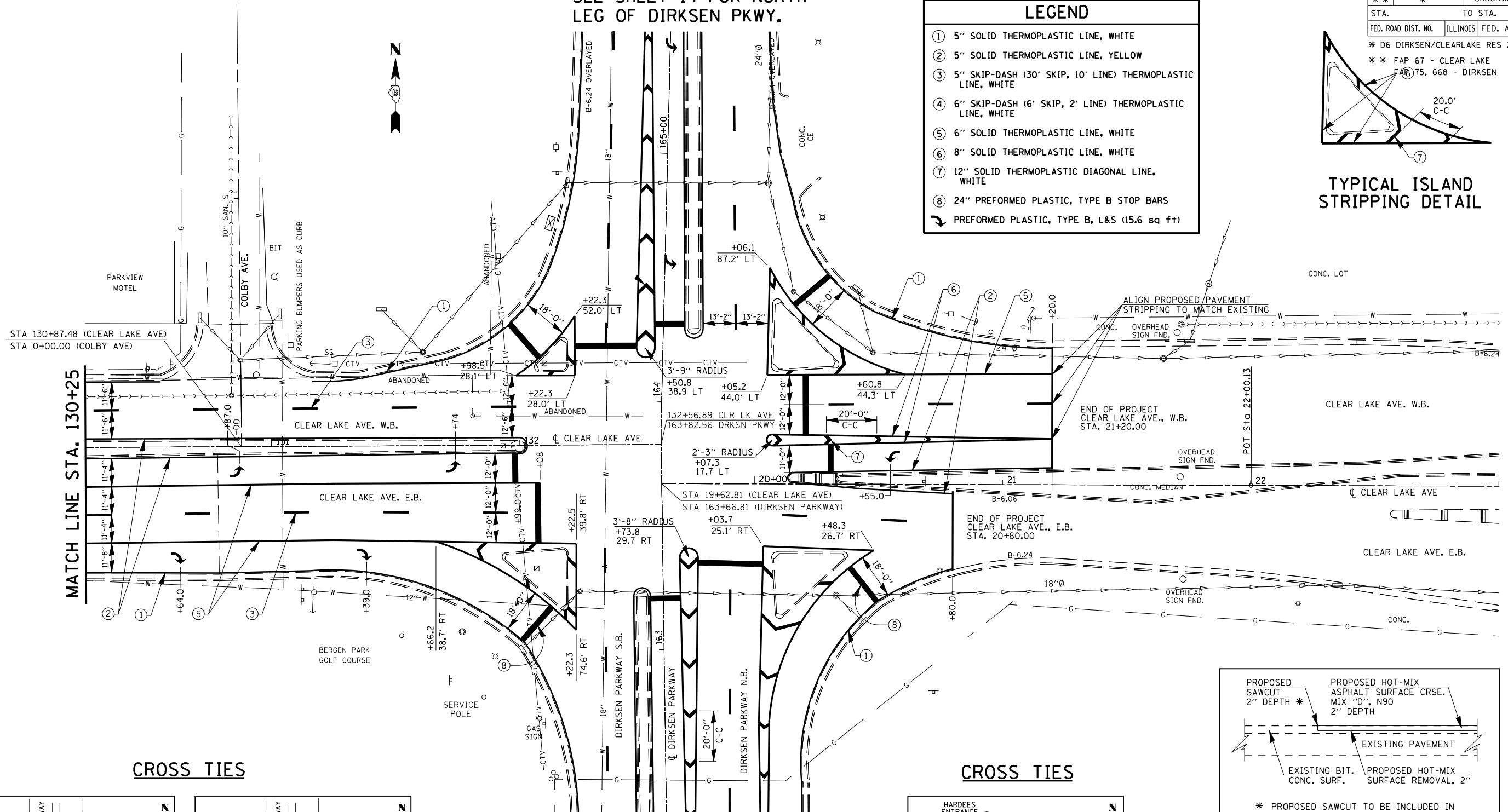
* D6 DIRKSEN/CLEARLAKE RES 2007
 ** FAP 67 - CLEAR LAKE
 F&B 75, 668 - DIRKSEN



TYPICAL ISLAND STRIPPING DETAIL

LEGEND	
①	5" SOLID THERMOPLASTIC LINE, WHITE
②	5" SOLID THERMOPLASTIC LINE, YELLOW
③	5" SKIP-DASH (30' SKIP, 10' LINE) THERMOPLASTIC LINE, WHITE
④	6" SKIP-DASH (6' SKIP, 2' LINE) THERMOPLASTIC LINE, WHITE
⑤	6" SOLID THERMOPLASTIC LINE, WHITE
⑥	8" SOLID THERMOPLASTIC LINE, WHITE
⑦	12" SOLID THERMOPLASTIC DIAGONAL LINE, WHITE
⑧	24" PREFORMED PLASTIC, TYPE B STOP BARS
↪	PREFORMED PLASTIC, TYPE B, L&S (15.6 sq ft)

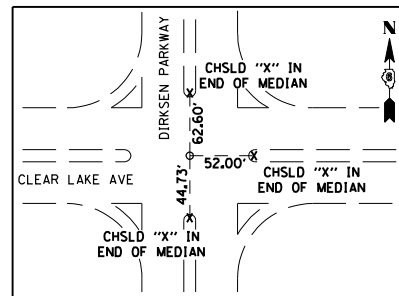
SEE SHEET 14 FOR NORTH LEG OF DIRKSEN PKWY.



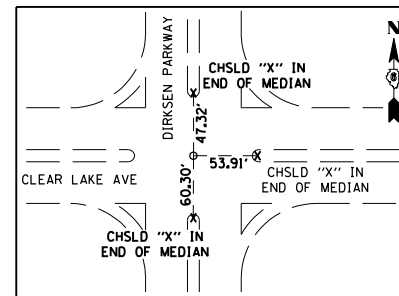
MATCH LINE STA. 130+25

CROSS TIES

CROSS TIES



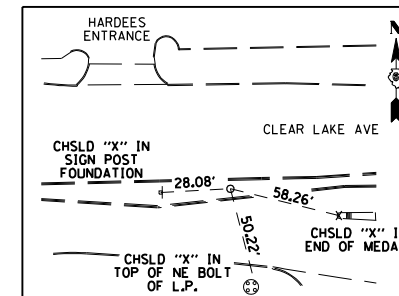
POT STA. 163+66.81 (DIRKSEN PARKWAY)
 POT STA. 19+62.81 (CLEAR LAKE AVE)
 (PK IN CHSLD "X")



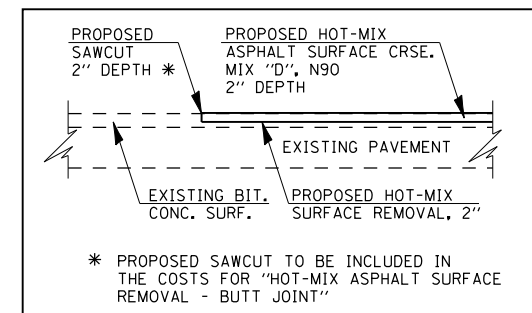
POT STA. 163+82.56 (DIRKSEN PARKWAY)
 POT STA. 132+56.89 (CLEAR LAKE AVE)
 (ALUM DISK (SECTION CORNER))

SEE SHEETS 12 & 13 FOR SOUTH LEG OF DIRKSEN PKWY.

NOTE:
 ALL STATION AND OFFSET CALLOUTS ON THIS SHEET ARE REFERENCED OFF OF THE CENTERLINE FOR CLEARLAKE AVENUE.



POT STA. 22+00.13 (CLEAR LAKE AVE)
 (STAR DRILL IN CHSLD "X")



* PROPOSED SAWCUT TO BE INCLUDED IN THE COSTS FOR "HOT-MIX ASPHALT SURFACE REMOVAL - BUTT JOINT"

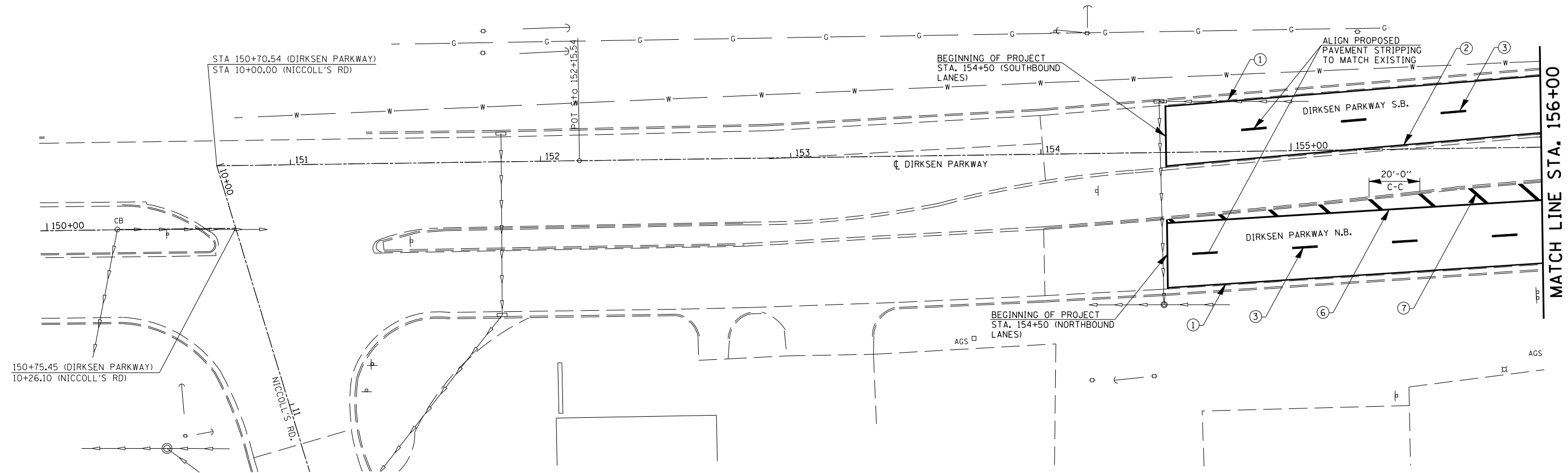
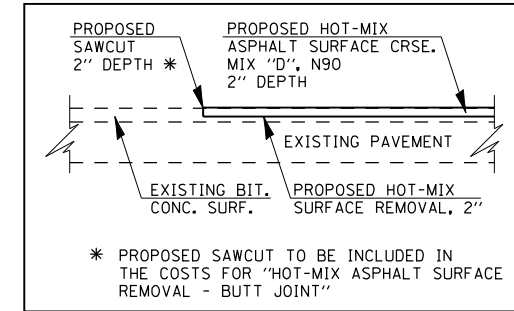
ILLINOIS DEPARTMENT OF TRANSPORTATION
PLAN & PAVEMENT MARKING DETAILS
CLEAR LAKE AVENUE
SECTION: D6 DIRKSEN/CLEARLAKE RES 2007
SANGAMON COUNTY

FAP RTE.	SECTION	COUNTY	TOTAL SHEETS	SHEET NO.
**	*	SANGAMON	14	12

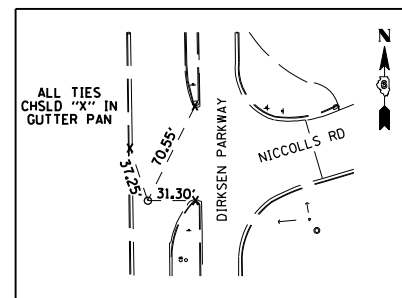
STA.	TO STA.
FED. ROAD DIST. NO.	ILLINOIS FED. AID PROJECT

* D6 DIRKSEN/CLEARLAKE RES 2007
 ** FAP 67 - CLEAR LAKE
 FAP 75, 668 - DIRKSEN

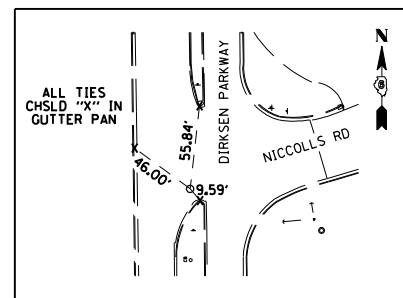
LEGEND	
①	5" SOLID THERMOPLASTIC LINE, WHITE
②	5" SOLID THERMOPLASTIC LINE, YELLOW
③	5" SKIP-DASH (30' SKIP, 10' LINE) THERMOPLASTIC LINE, WHITE
④	6" SKIP-DASH (6' SKIP, 2' LINE) THERMOPLASTIC LINE, WHITE
⑤	6" SOLID THERMOPLASTIC LINE, WHITE
⑥	8" SOLID THERMOPLASTIC LINE, WHITE
⑦	12" SOLID THERMOPLASTIC DIAGONAL LINE, WHITE
⑧	24" PREFORMED PLASTIC, TYPE B STOP BARS
↪	PREFORMED PLASTIC, TYPE B, L&S (15.6 sq ft)



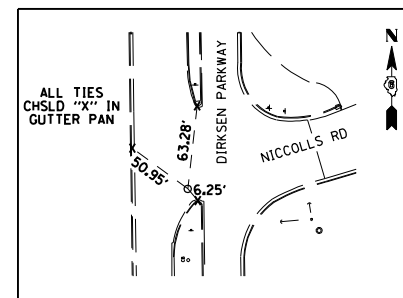
CROSS TIES



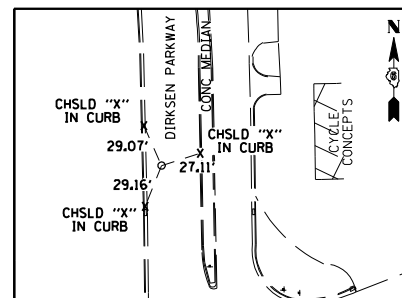
POT STA. 150+70.54 (DIRKSEN PARKWAY) = STA 10+00.00 NICCOLL'S RD (STAR DRILL W/ CHSLD "X")



POT STA. 150+75.45 (DIRKSEN PARKWAY) = STA 10+26.10 NICCOLL'S RD (60D SPIKE NAIL IN CRACK)



POT STA. 150+67.91 (DIRKSEN PARKWAY) = (*3 REBAR IN CRACK 1" BELOW PAVEMENT)



POT STA. 152+15.54 (DIRKSEN PARKWAY) (DRILLHOLE IN CHSLD "X")

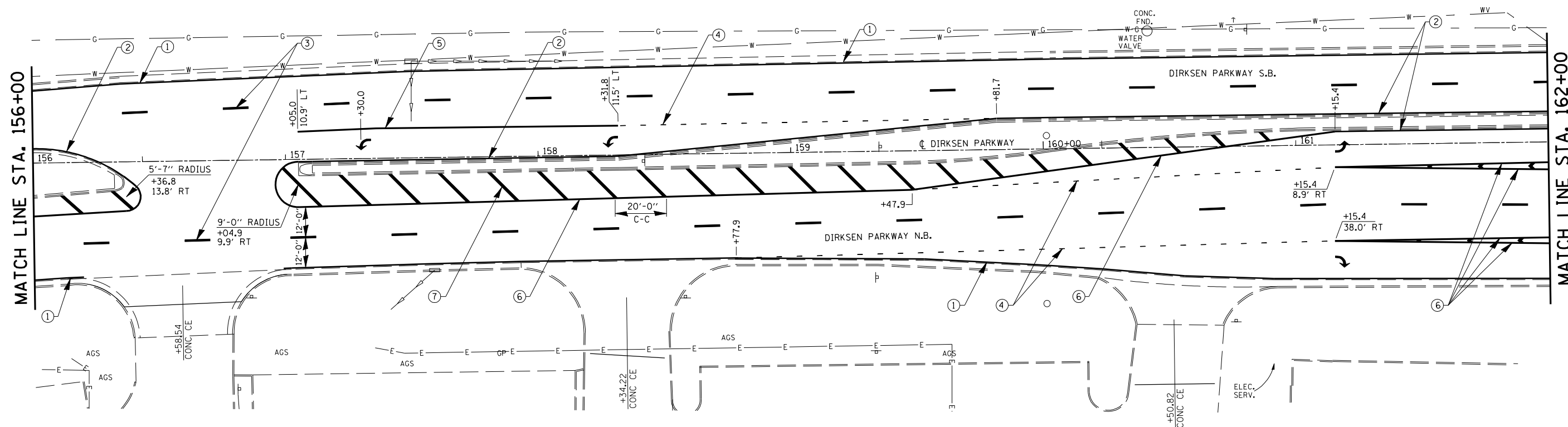
NOTE:

ALL STATION AND OFFSET CALLOUTS ON THIS SHEET ARE REFERENCED OFF OF THE CENTERLINE FOR DIRKSEN PARKWAY.

ILLINOIS DEPARTMENT OF TRANSPORTATION
PLAN & PAVEMENT MARKING DETAILS
DIRKSEN PARKWAY
SECTION: D6 DIRKSEN/CLEARLAKE RES 2007
SANGAMON COUNTY

FAP RTE.	SECTION	COUNTY	TOTAL SHEETS	SHEET NO.
**	*	SANGAMON	14	13
STA.		TO STA.		
FED. ROAD DIST. NO.	ILLINOIS	FED. AID PROJECT		

* D6 DIRKSEN/CLEARLAKE RES 2007
 ** FAP 67 - CLEAR LAKE
 FAP 75, 668 - DIRKSEN



LEGEND

- ① 5" SOLID THERMOPLASTIC LINE, WHITE
- ② 5" SOLID THERMOPLASTIC LINE, YELLOW
- ③ 5" SKIP-DASH (30' SKIP, 10' LINE) THERMOPLASTIC LINE, WHITE
- ④ 6" SKIP-DASH (6' SKIP, 2' LINE) THERMOPLASTIC LINE, WHITE
- ⑤ 6" SOLID THERMOPLASTIC LINE, WHITE
- ⑥ 8" SOLID THERMOPLASTIC LINE, WHITE
- ⑦ 12" SOLID THERMOPLASTIC DIAGONAL LINE, WHITE
- ⑧ 24" PREFORMED PLASTIC, TYPE B STOP BARS
- ↪ PREFORMED PLASTIC, TYPE B, L&S (15.6 sq ft)

NOTE:

ALL STATION AND OFFSET CALLOUTS ON THIS SHEET ARE REFERENCED OFF OF THE CENTERLINE FOR DIRKSEN PARKWAY.

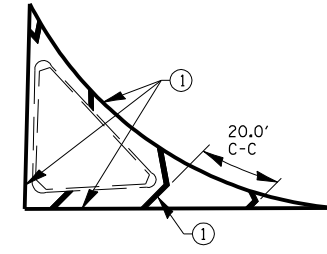
ILLINOIS DEPARTMENT OF TRANSPORTATION
PLAN & PAVEMENT MARKING DETAILS
DIRKSEN PARKWAY
SECTION: D6 DIRKSEN/CLEARLAKE
RES 2007
SANGAMON COUNTY

FAP RTE.	SECTION	COUNTY	TOTAL SHEETS	SHEET NO.
**	*	SANGAMON	14	14
STA.		TO STA.		
FED. ROAD DIST. NO.	ILLINOIS	FED. AID PROJECT		

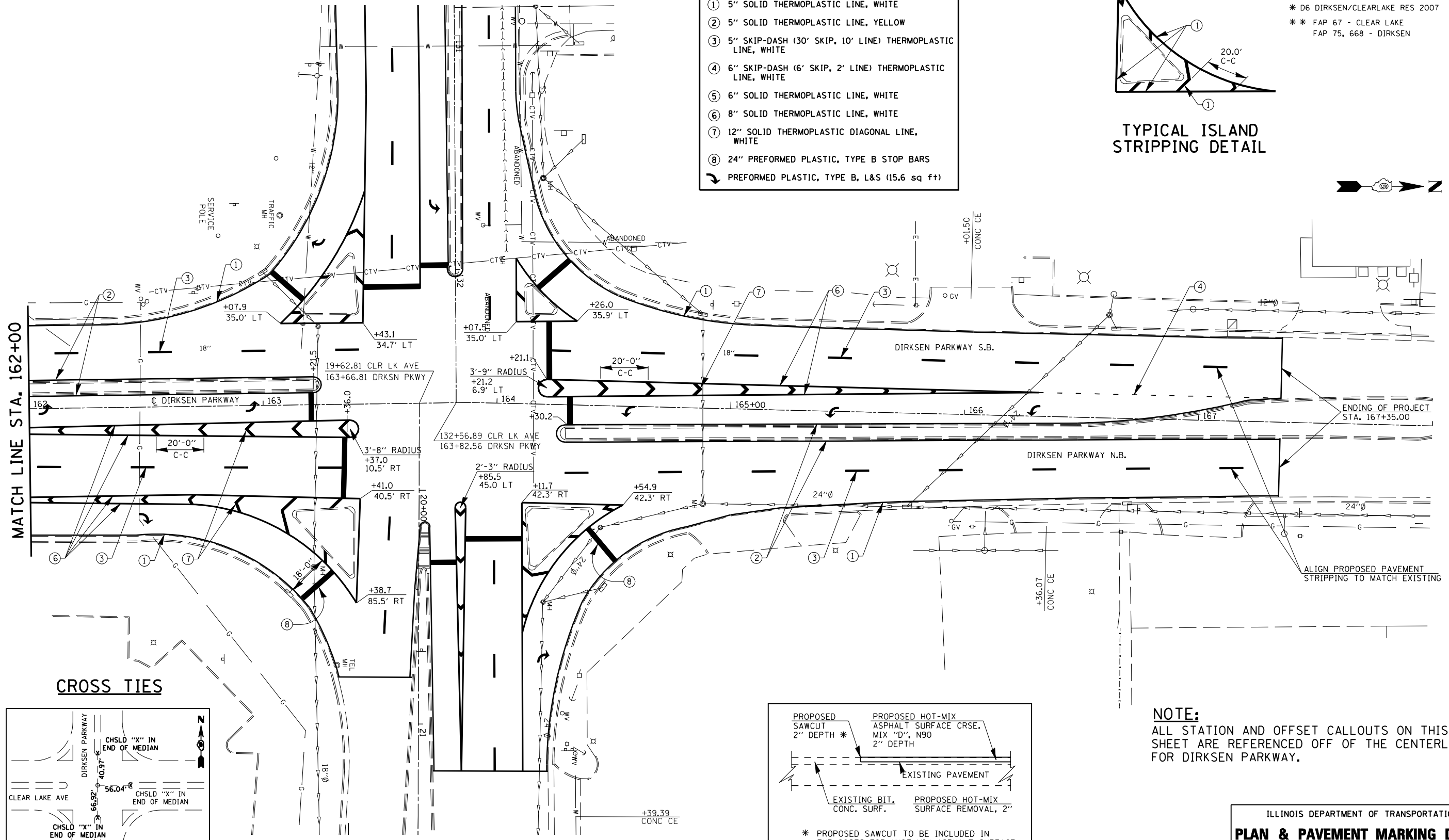
* D6 DIRKSEN/CLEARLAKE RES 2007
 ** FAP 67 - CLEAR LAKE
 FAP 75, 668 - DIRKSEN

SEE SHEETS 10 & 11 FOR WEST LEG OF CLEAR LAKE AVE.

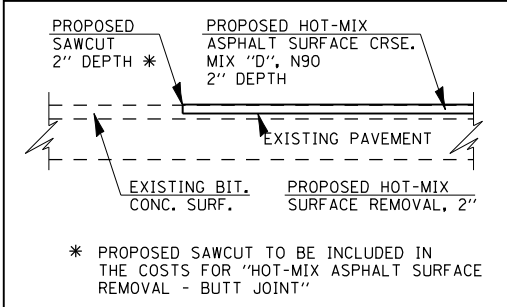
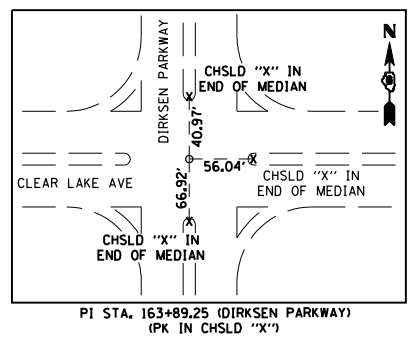
LEGEND	
①	5" SOLID THERMOPLASTIC LINE, WHITE
②	5" SOLID THERMOPLASTIC LINE, YELLOW
③	5" SKIP-DASH (30' SKIP, 10' LINE) THERMOPLASTIC LINE, WHITE
④	6" SKIP-DASH (6' SKIP, 2' LINE) THERMOPLASTIC LINE, WHITE
⑤	6" SOLID THERMOPLASTIC LINE, WHITE
⑥	8" SOLID THERMOPLASTIC LINE, WHITE
⑦	12" SOLID THERMOPLASTIC DIAGONAL LINE, WHITE
⑧	24" PREFORMED PLASTIC, TYPE B STOP BARS
↔	PREFORMED PLASTIC, TYPE B, L&S (15.6 sq ft)



TYPICAL ISLAND STRIPPING DETAIL



CROSS TIES



NOTE:
 ALL STATION AND OFFSET CALLOUTS ON THIS SHEET ARE REFERENCED OFF OF THE CENTERLINE FOR DIRKSEN PARKWAY.

ILLINOIS DEPARTMENT OF TRANSPORTATION
PLAN & PAVEMENT MARKING DETAILS
DIRKSEN PARKWAY
SECTION: D6 DIRKSEN/CLEARLAKE RES 2007
SANGAMON COUNTY