

F.A.P. RTE.	SECTION	COUNTY	TOTAL SHEETS	SHEET NO.
91/820		COLES	5	1

• D7 SIGNAL MODERNIZATION 2007-4

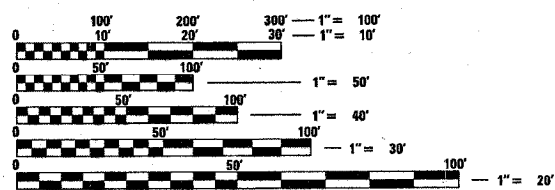
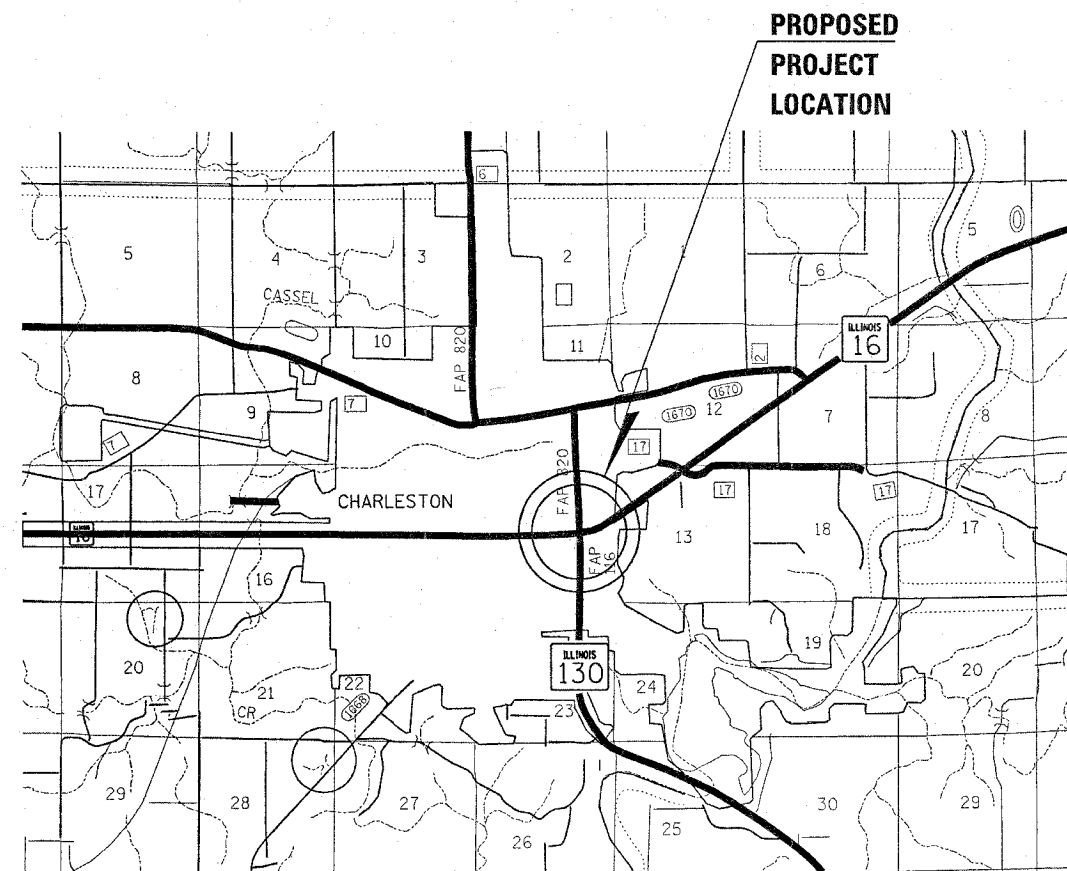
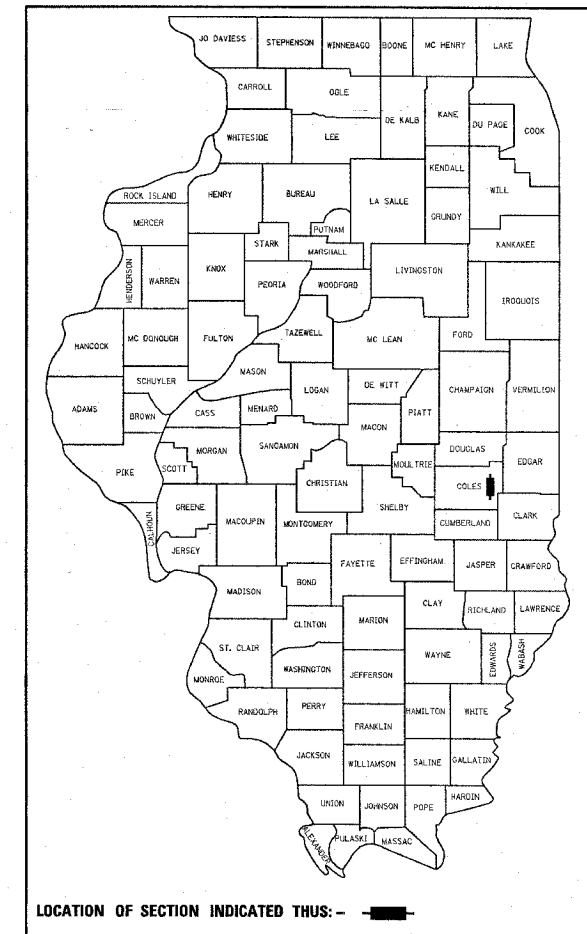
STATE OF ILLINOIS
DEPARTMENT OF TRANSPORTATION
DIVISION OF HIGHWAYS

PLANS FOR PROPOSED FEDERAL HIGHWAY PROJECT

F.A.P. ROUTE 91/F.A.P. 820-116 (IL 16 & IL 130)
SECTION D7 SIGNAL MODERNIZATION 2007-4
PROJECT HSIP-0091(067)
COLES COUNTY
C-97-126-06

FOR INDEX OF SHEETS, SEE SHEET NO. 2

D-97-080-06



FULL SIZE PLANS HAVE BEEN PREPARED USING STANDARD ENGINEERING SCALES. REDUCED SIZED PLANS WILL NOT CONFORM TO STANDARD SCALES. IN MAKING MEASUREMENTS ON REDUCED PLANS, THE ABOVE SCALES MAY BE USED.

J.U.L.I.E.
JOINT UTILITY LOCATION INFORMATION FOR EXCAVATION
1-800-892-0123

STATE OF ILLINOIS
DEPARTMENT OF TRANSPORTATION
DIVISION OF HIGHWAYS

SUBMITTED 2-2-2007

Christina M. Reed
DEPUTY DIRECTOR OF HIGHWAYS, REGION ENGINEER

March 23, 2007
Eric E. Harnett
ENGINEER OF DESIGN AND ENVIRONMENT

March 23, 2007
Milton R. See, P.E.
DIRECTOR, DIVISION OF HIGHWAYS

PRINTED BY THE AUTHORITY
OF THE STATE OF ILLINOIS

PROJECT ENGINEER: ROB MACKLIN
SQUAD LEADER: LYNN MCCLELLAN
PHONE: 217-342-3951 EXT. 245383

CONTRACT NO. 74208

F.A.P. RTE.	SECTION	COUNTY	TOTAL SHEETS	SHEET NO.
91	*	COLES	5	2
STA.		TO STA.		
FED. ROAD DIST. NO.		ILLINOIS	FED. AID PROJECT	
• DT SIGNAL MODERNIZATION 2007-4				

GENERAL NOTES

THIS SECTION SHALL BE CONSTRUCTED IN ACCORDANCE WITH THE PLANS, THE "STANDARD SPECIFICATIONS FOR ROAD AND BRIDGE CONSTRUCTION", ADOPTED JANUARY 1, 2007; THE "SUPPLEMENTAL SPECIFICATIONS AND RECURRING SPECIAL PROVISIONS" ADOPTED JANUARY 1, 2007; AND "THE SPECIAL PROVISIONS" INCLUDED IN THE PROPOSAL.

THIS PROJECT IS LOCATED AT THE INTERSECTION OF IL 16 & IL 130 IN THE CITY OF CHARLESTON, IN COLES COUNTY. THE WORK INCLUDED IN THIS SECTION CONSISTS OF INSTALLING PEDESTRIAN SIGNALS, PUSH BUTTONS, SIDEWALK RAMP AND ALL OTHER WORK NECESSARY TO COMPLETE THIS SECTION.

THE EXISTING UTILITY LINES ARE SHOWN ON THE PLANS TO INDICATE THEIR PRESENCE AND APPROXIMATE LOCATION. THE CONTRACTOR SHALL VERIFY THE EXACT LOCATION OF ALL UNDERGROUND UTILITIES PRIOR TO BEGINNING CONSTRUCTION. CALL J.U.L.I.E. AT 1-800-892-0123.

ALL HANDICAP RAMPS SHALL BE IN STRICT ACCORDANCE WITH THE STANDARDS SHOWN IN THE PLANS. AVERAGING OF DIMENSIONS TO MEET THE STANDARDS WILL NOT BE ALLOWED. FINAL PLACEMENT OF RAMPS WILL BE DETERMINED IN THE FIELD BY THE ENGINEER.

ALL HARDWARE SHALL BE TIGHTENED AND WELL SECURED. CABLES SHALL BE NEATLY WOUND IN HANDHOLES. CABLES SHALL BE NEATLY TRAINED IN THE CONTROLLER CABINET.

ALL THREADS OF BOLTS USED IN ASSEMBLY OF TRAFFIC SIGNAL COMPONENTS SHALL BE COATED WITH A NON-LEAD BASED ANTI-SEIZE COMPOUND, SIMILAR TO LEAD PLATE, PRIOR TO ASSEMBLY.

THE NUMBER OF CONDUCTORS FOR ELECTRIC CABLES AS SHOWN ON THE PLANS SHALL BE THE MINIMUM NUMBER OF CONDUCTORS FURNISHED FOR EACH LOCATION. THE CONTRACTOR MAY SUBSTITUTE AN ELECTRIC CABLE WITH MORE CONDUCTORS THAN SPECIFIED BUT NO ADDITIONAL COMPENSATION WILL BE MADE FOR THE EXTRA CONDUCTORS.

ALL NEW TRAFFIC AND PEDESTRIAN SIGNAL WIRING SHALL EXTEND FROM CONTROLLER TO SIGNAL. SPLICES IN HANDHOLES WILL NOT BE ALLOWED.

THE CONTRACTOR SHALL SAVE HARMLESS THE EXISTING SIGNS ON THE TRAFFIC SIGNAL POSTS AND MAST ARM POLES. THE SIGNS SHALL BE REMOVED AND REPLACED ON THE PROPOSED SIGNAL POST OR MAST ARM POLES.

THERE ARE 2 ADDITIONAL LOAD SWITCHES REQUIRED AT THE INTERSECTION OF IL 16 & IL 130 THAT WILL NEED TO BE INSTALLED. THIS WILL BE INCLUDED WITH THE MODIFY CONTROLLER CABINET PAY ITEM.

ALL EXISTING EQUIPMENT THAT IS TO BE REMOVED UNDER THIS CONTRACT SHALL BECOME THE PROPERTY OF THE CITY OF CHARLESTON. THE CONTRACTOR SHALL CONTACT THE CITY AND MAKE ARRANGEMENTS FOR THE DELIVERY OF THE EQUIPMENT.

CITY OF CHARLESTON CONTACT:
CURT BUESCHER
DEPARTMENT OF PUBLIC WORKS
CHARLESTON, IL 61920
PHONE: (217) 345-8455

INDEX OF SHEETS

- 1 COVER SHEET
- 2 INDEX OF SHEETS AND GENERAL NOTES
- 3 SUMMARY OF QUANTITIES
- 4 CABLE LAYOUT
- 5 PAVEMENT MARKINGS AND PCC SIDEWALK

THE FOLLOWING STANDARDS ARE A PART OF THESE PLANS AND ARE INCLUDED AFTER SHEET NO. 5:

- 000001-04 STANDARD SYMBOLS, ABBREVIATIONS AND PATTERNS
- 424001-04 CURB RAMPS FOR SIDEWALKS
- 701101-01 OFF-RD OPERATIONS, MULTILANE, 15' TO 2' FROM EDGE OF PAVEMENT
- 701701-04 URBAN LANE CLOSURE, MULTILANE INTERSECTION
- 702001-06 TRAFFIC CONTROL DEVICES
- 720001 SIGN PANEL MOUNTING DETAILS
- 720006-01 SIGN PANEL ERECTION DETAILS
- 857001 STANDARD PHASE DESIGNATION DIAGRAMS AND PHASE SEQUENCES
- 878001-05 CONCRETE FOUNDATION DETAILS
- 880006 TRAFFIC SIGNAL MOUNTING DETAILS

PLOT DATE = *DATE*
PLOT SCALE = *SCALE*
PLOT USER = *USER*

REVISIONS	
NAME	DATE

ILLINOIS DEPARTMENT OF TRANSPORTATION
**INDEX OF SHEETS
AND
GENERAL NOTES**
SCALE: VERT. DRAWN BY
DATE CHECKED BY

F.A.P. RTE.	SECTION	COUNTY	TOTAL SHEETS	SHEET NO.
91	•	COLES	5	3
STA.		TO STA.		
FED. ROAD DIST. NO.		ILLINOIS FED. AID PROJECT		
• D7 SIGNAL MODERNIZATION 2007-4				

SUMMARY OF QUANTITIES			CONSTRUCTION TYPE CODE		
CODE NO	ITEM	UNIT	TOTAL QUANTITIES	YO31-1F 90% FED. 10% STATE URBAN	
42400100	PORTLAND CEMENT CONCRETE SIDEWALK 4 INCH	SQ FT	84	84	
42400800	DETECTABLE WARNINGS	SQ FT	10	10	
44000500	COMBINATION CURB AND GUTTER REMOVAL	FOOT	6	6	
60605100	COMBINATION CONCRETE CURB AND GUTTER, TYPE B-6.24 (ABUTTING EXISTING PAVEMENT)	FOOT	6	6	
67100100	MOBILIZATION	L SUM	1	1	
70102635	TRAFFIC CONTROL AND PROTECTION, STANDARD 701701	L SUM	1	1	
* 78000400	THERMOPLASTIC PAVEMENT MARKING - LINE 6"	FOOT	441	441	
* 78000650	THERMOPLASTIC PAVEMENT MARKING - LINE 24"	FOOT	54	54	
78300100	PAVEMENT MARKING REMOVAL	SQ FT	118	118	
81012600	CONDUIT IN TRENCH, 2" DIA., PVC	FOOT	25	25	
87301245	ELECTRIC CABLE IN CONDUIT, SIGNAL NO. 14 5C	FOOT	1835	1835	
87301255	ELECTRIC CABLE IN CONDUIT, SIGNAL NO. 14 7C	FOOT	737	737	
87502720	TRAFFIC SIGNAL POST, ALUMINUM 18 FT.	EACH	2	2	
87800100	CONCRETE FOUNDATION, TYPE A	FOOT	3	3	
87900200	DRILL EXISTING HANDHOLE	EACH	1	1	
88102810	PEDESTRIAN SIGNAL HEAD, POLYCARBONATE, LED, 1-FACE, BRACKET MOUNTED	EACH	4	4	
88800100	PEDESTRIAN PUSH-BUTTON	EACH	8	8	
89500100	RELOCATE EXISTING SIGNAL HEAD	EACH	4	4	
89500200	RELOCATE EXISTING PEDESTRIAN SIGNAL HEAD	EACH	1	1	
89502210	MODIFY EXISTING CONTROLLER CABINET	EACH	1	1	
89502300	REMOVE ELECTRIC CABLE FROM CONDUIT	FOOT	1509	1509	
89502385	REMOVE EXISTING CONCRETE FOUNDATION	EACH	1	1	

* SPECIALTY ITEMS

REVISIONS	
NAME	DATE

ILLINOIS DEPARTMENT OF TRANSPORTATION

SUMMARY OF QUANTITIES

SCALE: VERT.
HORIZ.
DATE

DRAWN BY
CHECKED BY

PLT DATE * * * * *
PLT SCALE * * * * *
USER NAME * * * * *

F.A.P. RTE.	SECTION	COUNTY	TOTAL SHEETS	SHEET NO.
91	*	COLES	5	4
STA.		TO STA.		
FED. ROAD DIST. NO.		ILLINOIS	FED. AID PROJECT	
* D7 SIGNAL MODERNIZATION 2007-4				



STATION 564+16.8 (F.A.P. 91 / IL. 16)
STATION 46+70.4 (F.A.P. 116 / IL 130)

EX. 45'-2 1/2" CONDUIT
PULL 1 NO. 14 5c, 1 NO. 14 7c
ADD 3 NO. 14 5c

EX. 5'-2" CONDUIT
ADD 1 NO. 14 5c

EX. 22'-2" CONDUIT
TO BE ABANDONED
PULL 1 NO. 14 5c, 1 NO. 14 7c

25' PVC 2" T
ADD 3 NO. 14 5c, 1 NO. 14 7c

EX. 92'-3" CONDUIT
PULL 1 NO. 14 5c, 1 NO. 14 7c
ADD 3 NO. 14 5c

Sta. 564+93.4 58' LT.
CONCRETE FOUNDATION TO BE REMOVED
EX. TRAFFIC SIGNAL HEADS
TO BE RELOCATED

Sta. 564+96.7 56' LT.
CONCRETE FOUNDATION TYPE A
18' POST
INSTALL RELOCATED TRAFFIC
SIGNAL HEADS

EX. 18' CONDUIT
PULL 1 NO. 14 4c
ADD 1 NO. 14 7c

EX. 7' CONDUIT
PULL 1 NO. 14 2c
ADD 1 NO. 14 5c

EX. 84'-3" CONDUIT
PULL 1 NO. 14 2c, 1 NO. 14 4c
ADD 1 NO. 14 5c, 1 NO. 14 7c

EX. 7' CONDUIT
PULL 1 NO. 14 2c, 1 NO. 14 4c
ADD 1 NO. 14 5c, 1 NO. 14 7c

Sta. 564+54.7 57' RT.
18' POST
UTILIZE EXISTING FOUNDATION
RELOCATE 2 EXISTING SIGNAL HEADS

EX. 34' CONDUIT
PULL 1 NO. 14 2c, 1 NO. 14 4c
ADD 1 NO. 14 5c, 1 NO. 14 7c

EX. 106'-3" CONDUIT
PULL 1 NO. 14 2c, 1 NO. 14 4c
1 NO. 14 5c, 1 NO. 14 7c
ADD 5 NO. 14 5c, 2 NO. 14 7c

EX. 27'-3" CONDUIT
PULL 1 NO. 14 2c, 1 NO. 14 4c
1 NO. 14 5c, 1 NO. 14 7c
ADD 5 NO. 14 5c, 2 NO. 14 7c

EX. 14'-2" CONDUIT
PULL 1 NO. 14 3c
ADD 1 NO. 14 5c

EX. 6'-6" CONDUIT
PULL 2 NO. 14 2c, 1 NO. 14 3c,
2 NO. 14 4c, 1 NO. 14 5c, 1 NO. 14 7c
ADD 7 NO. 14 5c, 3 NO. 14 7c

LEGEND

- Existing
- Proposed
- Pedestrian Push Button
- Pedestrian Signal Head
- +▽ Traffic Signal Head w/ Backplate
- ▽ Traffic Signal Head w/o Backplate
- Traffic Signal Post
- ⊙ Foundation & Mast Arm

PLOT DATE = #DATE#
FILE NAME = #FILE#
PLOT SCALE = #SCALE#
USER NAME = #USER#

REVISIONS	
NAME	DATE

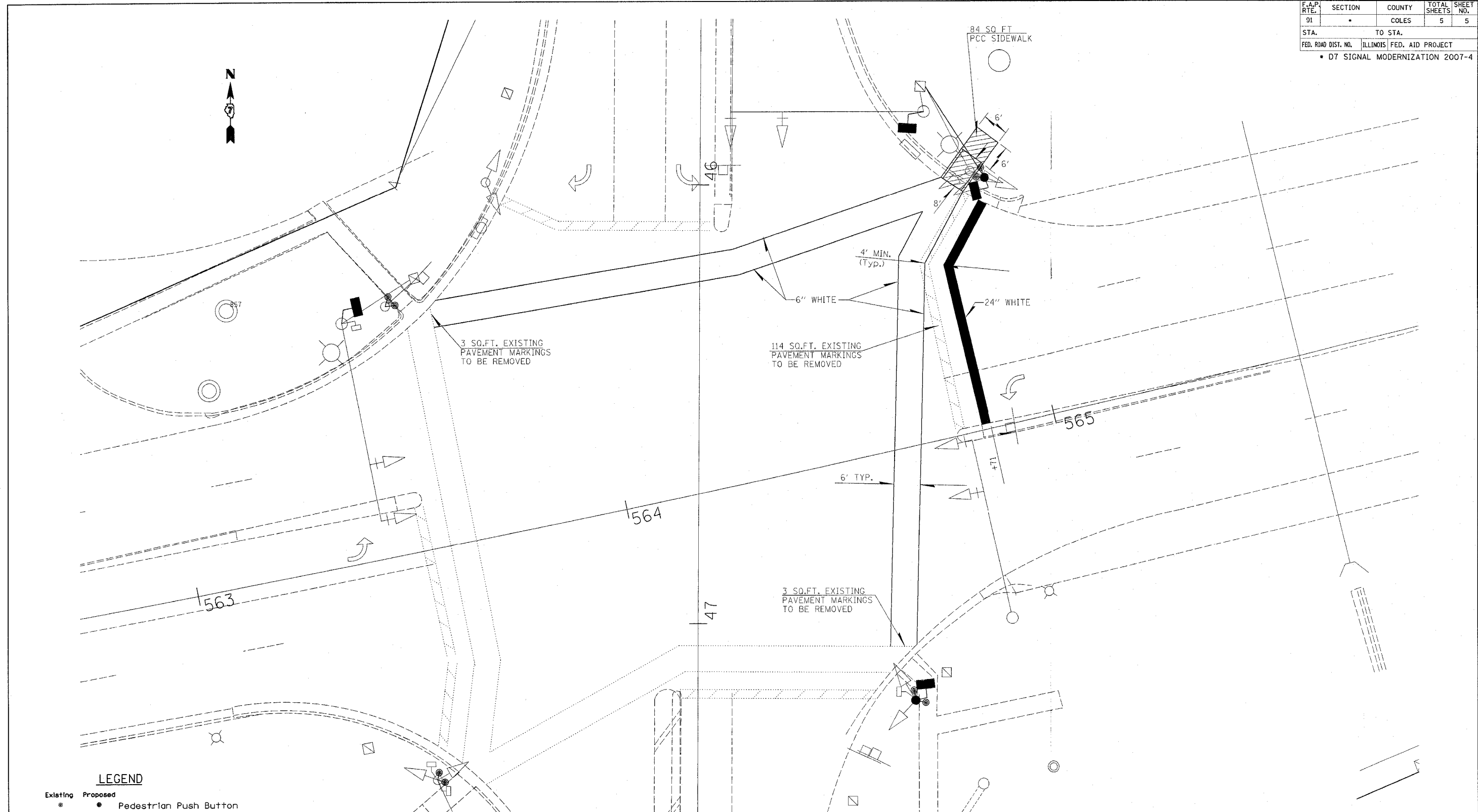
ILLINOIS DEPARTMENT OF TRANSPORTATION

CABLE LAYOUT

SCALE: VERT.
HORIZ.
DATE

DRAWN BY
CHECKED BY

CONTRACT NO. 74208				
F.A.P. RTE.	SECTION	COUNTY	TOTAL SHEETS	SHEET NO.
91		COLES	5	5
STA.		TO STA.		
FED. ROAD DIST. NO.		ILLINOIS FED. AID PROJECT		
• D7 SIGNAL MODERNIZATION 2007-4				



LEGEND

- | | | | |
|---|----------|---|-----------------------------------|
| ● | Existing | ● | Proposed |
| ● | | ● | Pedestrian Push Button |
| ■ | | ■ | Pedestrian Signal Head |
| ⊕ | | ⊕ | Traffic Signal Head w/ Backplate |
| ⊖ | | ⊖ | Traffic Signal Head w/o Backplate |
| ○ | | ○ | Traffic Signal Post |
| ⊙ | | ⊙ | Foundation & Mast Arm |

REVISIONS	
NAME	DATE

ILLINOIS DEPARTMENT OF TRANSPORTATION
**PAVEMENT MARKINGS
AND
PCC SIDEWALK**

SCALE: VERT. _____
HORIZ. _____
DATE _____

DRAWN BY _____
CHECKED BY _____

PLOT DATE = #DATE#
FILE NAME = #FILE#
PLOT SCALE = #SCALE#
USER NAME = #USER#