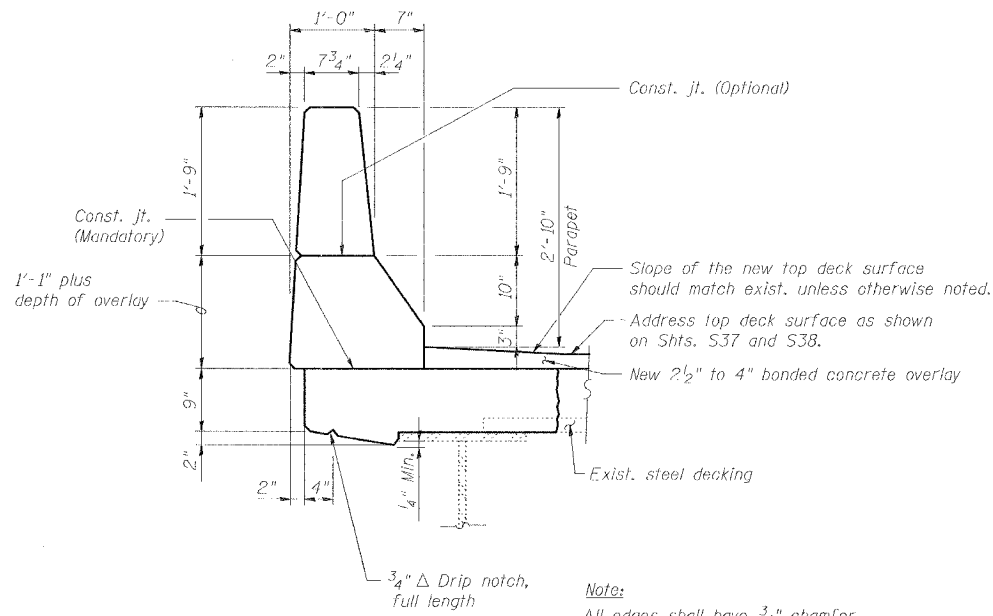
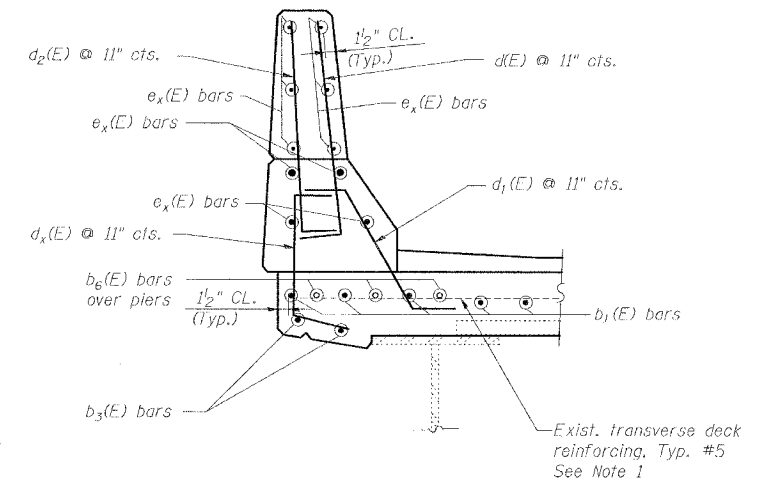


Note:
Existing deck reinforcing bars extending into the removal area shall be cleaned, straightened, and incorporated into the new construction. Any reinforcing bars that are damaged during concrete removal shall be replaced with an approved bar splicer or anchorage system. Cost included with concrete removal.

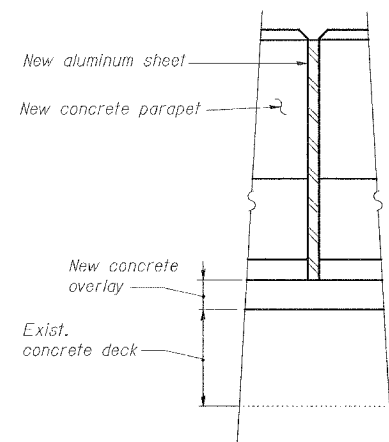
1 PARAPET DEMOLITION PLAN
S33



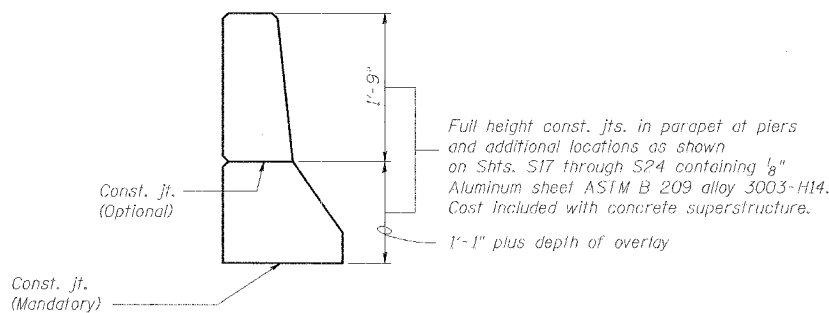
2 TYPICAL NEW PARAPET CROSS SECTION
S33



3 TYPICAL REINFORCEMENT FOR NEW PARAPET
S33
Note 1. Existing transverse reinforcement terminates at locations of existing floor drains and does not extend across the full width of the deck at those locations. It is not necessary to extend these bars via mechanical Splices.



4 PARAPET CONSTRUCTION JOINT
S33



5 PARAPET JOINT DETAILS
S33

Note:
ex(E) bars shall not pass thru aluminum sheets.

REVISIONS	
NAME	DATE

TYPICAL PARAPET DETAILS
STATE OF ILLINOIS
DEPARTMENT OF TRANSPORTATION
REHABILITATION AND RETROFIT REPAIRS
FAI ROUTE 70
POPLAR STREET BRIDGE APPROACHES
ST. CLAIR COUNTY
STRUCTURE NO. 082-0141 (ROADWAY A)
SCALE: N.T.S.
DATE: 02/01/2007

DATE: 1/24/2007
FILENAME: P:\2001\1201-1300\2001.1240\Drafting\RoadwayRehab_AT\RampA\para_A_PARA01.dgn

DESIGNED	JPD
CHECKED	CSD
DRAWN	CLK
CHECKED	JPD