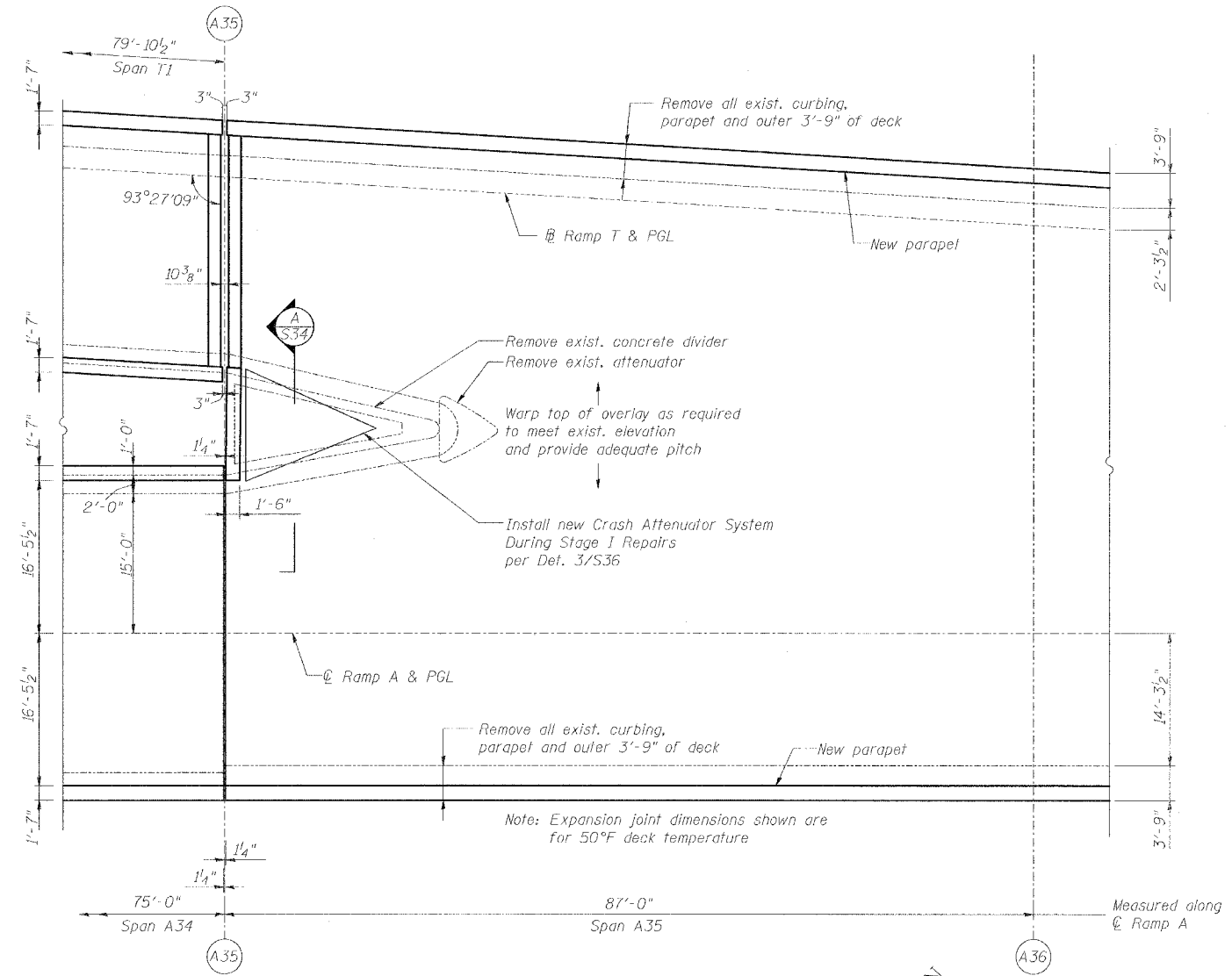


ROUTE NO.	SECTION	COUNTY	TOTAL SHEETS	SHEET NO.
F.A.I. 70	*	ST. CLAIR	99	55
FED. ROAD DIST. NO. 7	ILLINOIS	FED. AID PROJECT: 14-70	SHEET S-34 OF S-56	
CONTRACT NO. 76985				

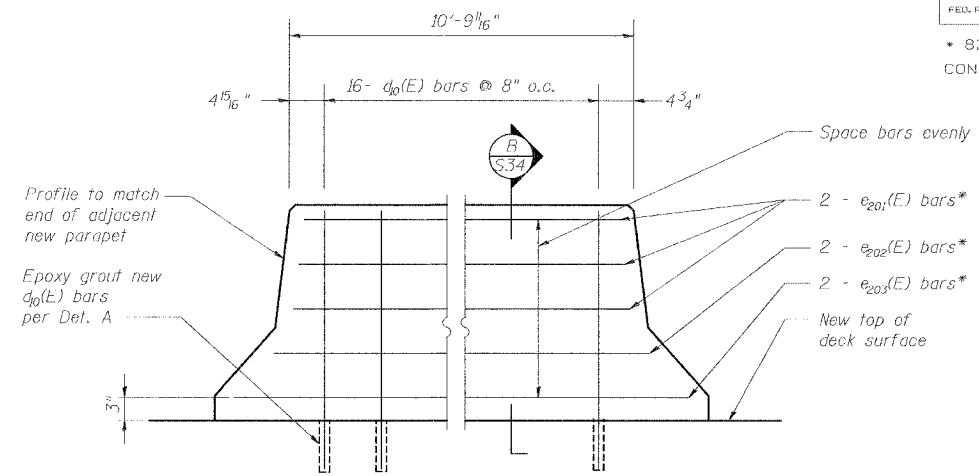


PLAN OF NEW PARAPET AT RAMP A/RAMP T SPLIT

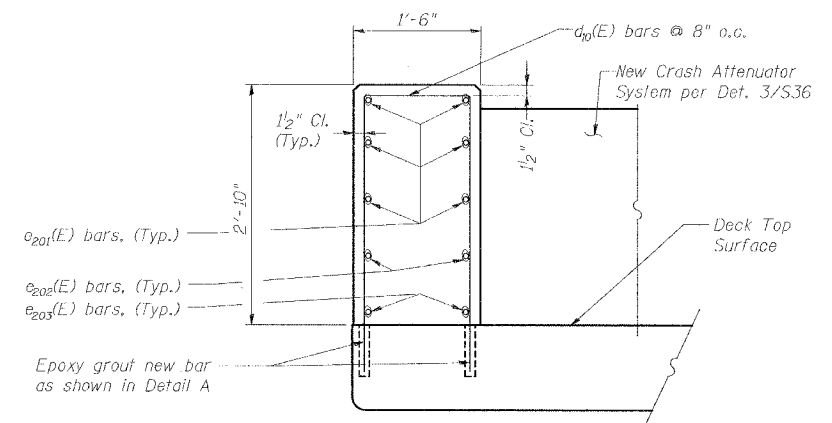
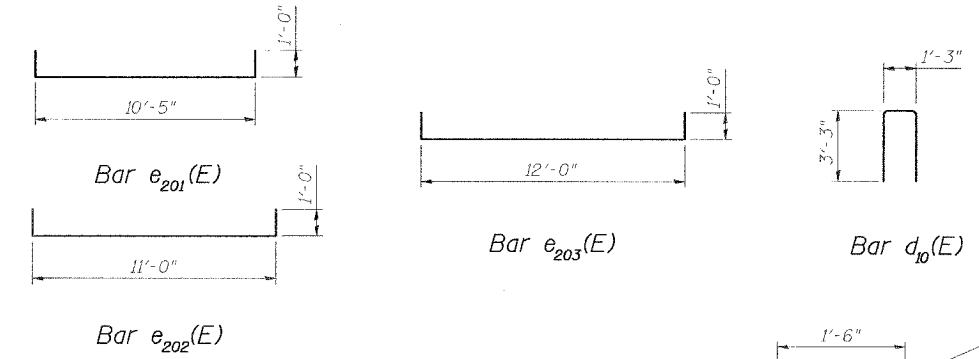
BILL OF MATERIAL

Bar List - End Wall @ A/T Split				
Bar	No.	Size	Length	Shape
e ₂₀₁ (E)	6	#5	12'-5"	U
e ₂₀₂ (E)	2	#5	13'-8"	U
e ₂₀₃ (E)	2	#5	14'-0"	U
d ₁₀ (E)	16	#5	7'-8"	U
Concrete Superstructure		Cu. Yd.	1.8	
Reinforcement Bars (Epoxy Coated)		Pound	270	
Concrete Removal		Cu. Yd.	13.1	
Protective Coat		Sq. Yd.	3.6	

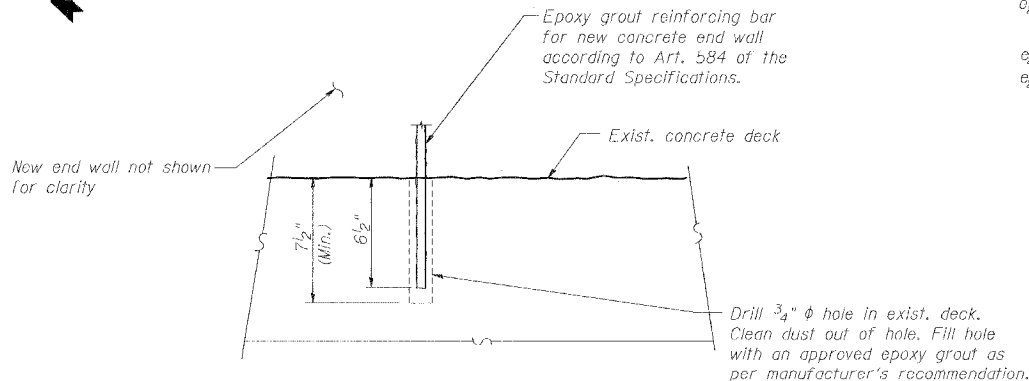
Reinforcement bars designated (E) shall be epoxy coated.



SECTION A
END WALL AT RAMP A/RAMP T SPLIT



SECTION B
END WALL AT RAMP A/RAMP T SPLIT



DETAIL A - EPOXY GROUTING OF REINFORCING BARS

Note:
The Contractor shall test 10% of the embedded No. 5 bars to meet a minimum certified pull out load of 23.25 kips. For every bar that fails to meet the pull out load of 23.25 kips, the Contractor shall test two additional bars and regrout an additional No. 5 bar +4" either side of the failed bar. The cost of testing and furnishing and installing additional bars shall be included with "Reinforcing Bars (Epoxy-Coated)".

REVISIONS	
NAME	DATE

SPECIAL PARAPET DETAILS
STATE OF ILLINOIS
DEPARTMENT OF TRANSPORTATION
REHABILITATION AND RETROFIT REPAIRS
FAI ROUTE 70
POPLAR STREET BRIDGE APPROACHES
ST. CLAIR COUNTY
STRUCTURE NO. 082-0141 (ROADWAY A)
SCALE: N.T.S.
DATE: 02/01/2007

DATE: 1/24/2007 FILENAME: P:\2001\1201-1300\20011240\Drafting\Roadway\Rehab_A\T\ReampA\para\A-PARA04.dgn

DESIGNED	JPD
CHECKED	CSD
DRAWN	CLK
CHECKED	JPD