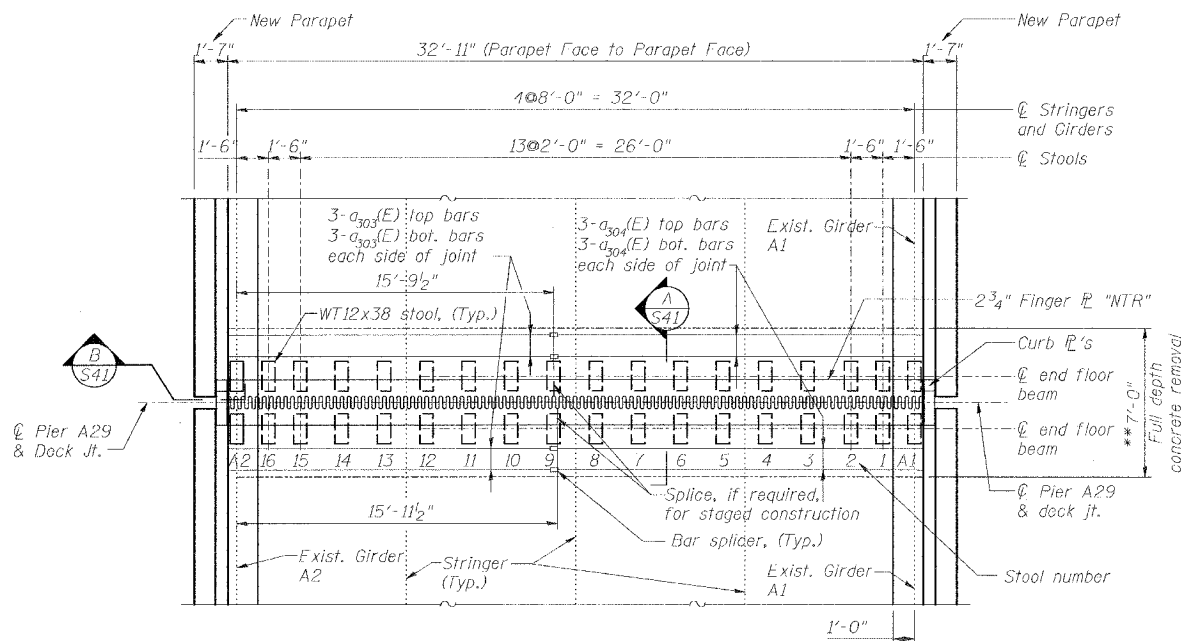


ROUTE NO.	SECTION	COUNTY	TOTAL SHEETS	SHEET NO.
F.A.I. 70	*	ST. CLAIR	99	62
FED. ROAD DIST. NO. 7		ILLINOIS	FED. AID PROJECT- IM-78	
* 82-3HV8-3R-5		SHEET S-41 OF S-56		
CONTRACT NO. 76985				



**PLAN**  
**FINGER JT. @ PIER A29**  
 8.0% Cross Slope Towards Girder A2

\*\* -At 50° F

**Notes:**

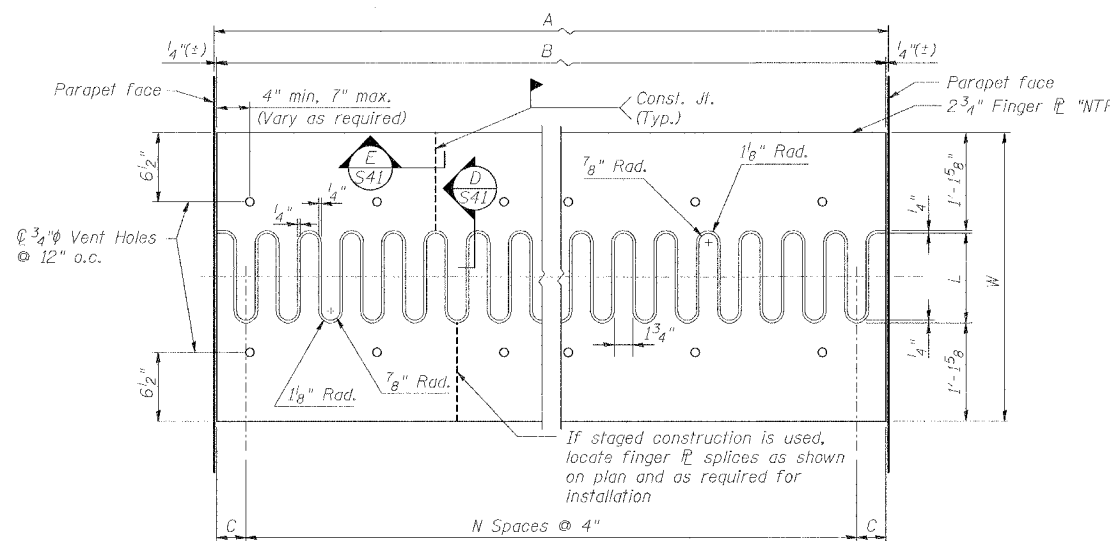
All steel for finger plate joint shall be M270 Grade 50.  
 Curb plates and parapet not shown for clarity.  
 Slope trough 1"/ft towards **GIRDER A2**  
 Details of trough per Sht. S47

Adjust height of stool as required by shimming.  
 Shims to be 1/8", 1/4", 1/2", or 3/4" as required.  
 Standard shim pack to include 1/2", 1/4", 3/8" and (2) 1/8" shims

Load carrying components designated "NTR" shall conform to the Supplemental Requirements for Notch Toughness, Zone 2.

Min Bar Laps	d			f		
	#4	1'-8"				
	30°F	50°F	130°F	30°F	50°F	130°F
	22 1/4"	17 5/8"	13"	7 3/8"	5"	2 5/8"

A (Roadway Width)	B (Finger Pl Length)	C	L (Finger Length)	N	W (Finger Pl Width)
32'-11"	32'-10 1/2"	3 1/4"	11 1/2"	97	3'-3"

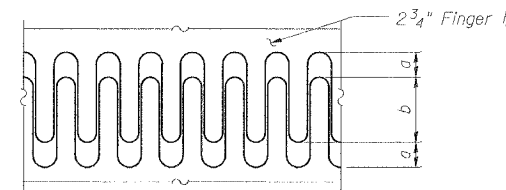


Note: Finger Plate shall be flame cut as provided in article 505.04(k) of IDOT Standard Specifications using a 1/4" wide cut.

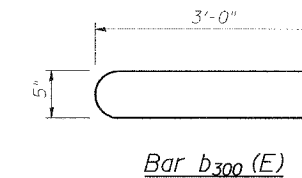
**FINGER PLATE CUTTING DETAIL**

a		b	
-30°F	50°F	130°F	-30°F
10"	5 3/8"	3 3/4"	1 1/2"
			6 1/8"
			10 3/4"

Note: For deck temperatures between those shown, interpolate between dimensions given above.

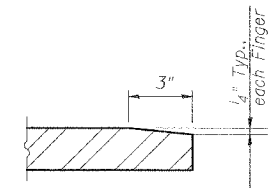


**FINGER PLATE SETTING DIAGRAM**

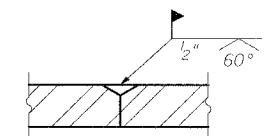


**BILL OF MATERIAL**

Bar	No.	Size	Length	Shape
a303(E)	12	#5	17'-8"	—
a304(E)	12	#5	18'-0"	—
b300(E)	66	#4	6'-5"	U
Reinforcing Bars, Epoxy Coated			Pound	730
Bar Splicers			Ea.	12
Fabric Reinforced Elastomeric Trough			Foot	40
Concrete Removal			Cu. Yd.	7.0
Concrete Superstructure			Cu. Yd.	7.0
Finger Plate Expansion Joint, 5"			Foot	33



**SECTION D**

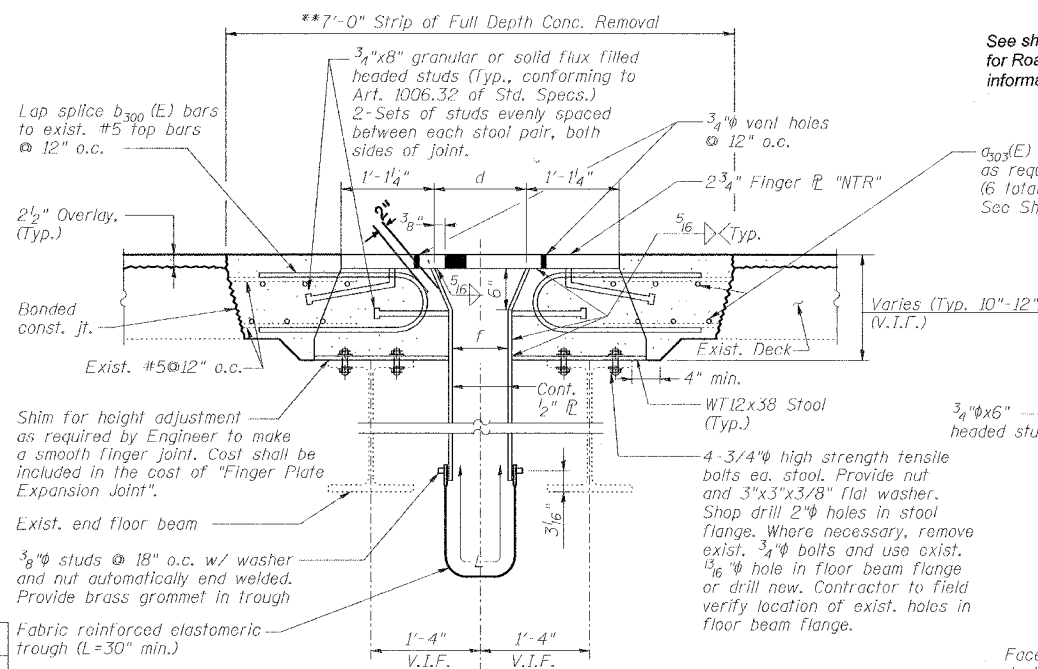


**SECTION E**

**THEORETICAL STOOL HEIGHTS\***

Stools	Span A28	Span A29
1-16	8 7/8"	8 3/4"
A1	8 1/8"	8 1/4"
A2	10 3/8"	10 1/2"

\*Must be field verified prior to fabrication.

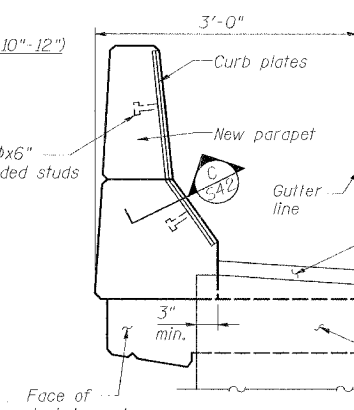


**SECTION A**

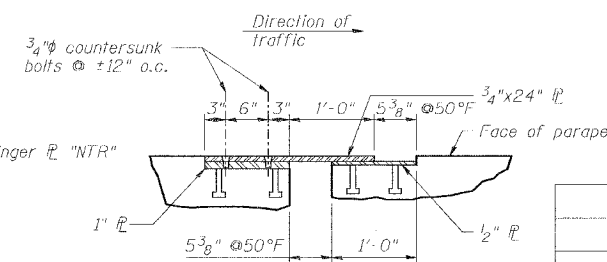
\*\* -At 50° F

See sheet S37 of 56 (variable width) for Roadway crown and cross-slope information.

a303(E) spliced to a304(E) as required for staged construction. (6 total each side of jt., Typ.) See Sht. S32 for bar splicer details.



**SECTION B**



**SECTION C**

REVISIONS	
NAME	DATE

**SPECIAL JOINT DETAILS**

STATE OF ILLINOIS  
 DEPARTMENT OF TRANSPORTATION  
 REHABILITATION AND RETROFIT REPAIRS  
 FAI ROUTE 70  
 POPLAR STREET BRIDGE APPROACHES  
 ST. CLAIR COUNTY

STRUCTURE NO. 082-0141 (ROADWAY A1)  
 SCALE: N.T.S.  
 DATE: 02/01/2007

DATE: 1/24/2007  
 FILENAME: p:\2001\1201-1800\2001.1240\Drafting\Roadway\Rehab\_AT\_RampA\join\_A-JOIN05.dgn

DESIGNED	JPD
CHECKED	CSD
DRAWN	CLK
CHECKED	JPD