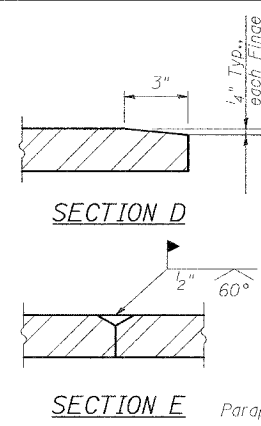
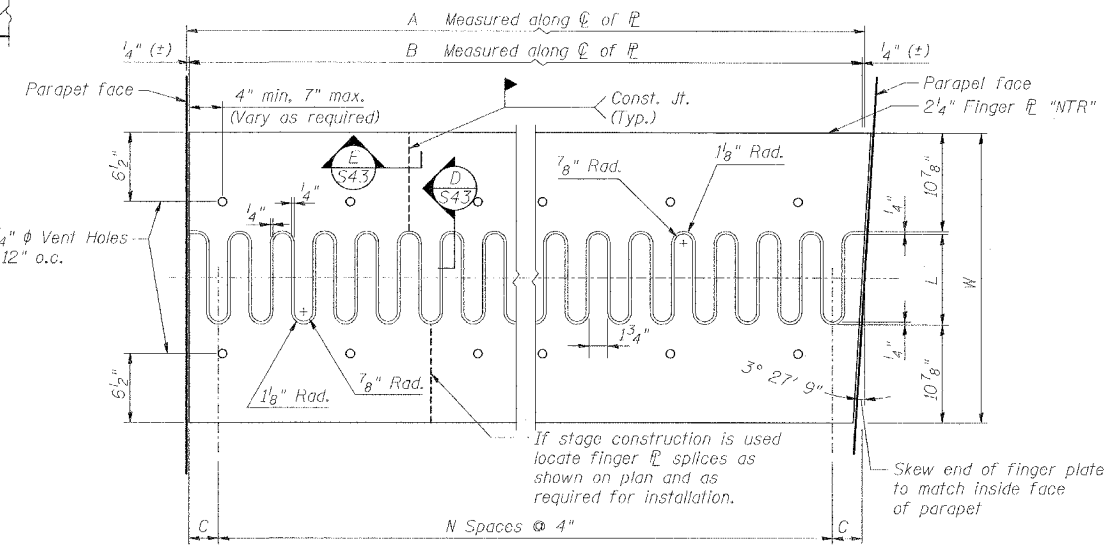


PLAN
FINGER JT. @ PIER A38
See Sheet S-37 For Cross Slope at Finger Joint



A (Roadway Width)	B (Finger L Length)	C	L (Finger Length)	N (Finger W Width)	W (Finger L Width)
52'-10 ³ / ₄ "	52'-10 ¹ / ₄ "	3 ¹ / ₈ "	7 ¹ / ₄ "	157	2'-5 ¹ / ₈ "



Note: Finger Plate shall be flame cut as provided in article 505.04(k) of IDOT Standard Specifications using a 1/4" wide cut.

THEORETICAL STOOL HEIGHTS*

Stool	Span A37	Span A38
1	8 ¹ / ₂	8 ³ / ₈
2	8 ⁵ / ₈	8 ⁵ / ₈
3	8 ⁷ / ₈	8 ³ / ₄
4	9 ¹ / ₈	9
5	9 ³ / ₈	9 ¹ / ₄
6	8 ³ / ₈	9 ³ / ₈
7	8 ¹ / ₂	9 ¹ / ₈
8	8 ³ / ₄	9 ³ / ₈
9	9	9 ¹ / ₂
10	9 ¹ / ₄	9 ³ / ₄
11	9 ¹ / ₂	10
12	9 ³ / ₄	10 ¹ / ₈
13	10	10 ³ / ₈
14	10 ¹ / ₄	10 ⁵ / ₈
15	10 ¹ / ₂	10 ³ / ₄
16	10 ³ / ₄	11
17	11	11 ¹ / ₄
18	11 ¹ / ₈	11 ³ / ₈
19	10 ⁵ / ₈	11 ⁵ / ₈
20	10 ¹ / ₂	11 ¹ / ₈
21	9 ⁵ / ₈	11 ³ / ₈
22	10 ³ / ₈	10 ⁵ / ₈
23	10	10 ¹ / ₈
24	9 ¹ / ₂	9 ¹ / ₂
25	9	9
26	8 ⁵ / ₈	8 ⁵ / ₈
A1	10 ¹ / ₈	10 ¹ / ₈
A2	10 ¹ / ₈	10 ¹ / ₈

* Must be Field Verified Prior to Fabrication*

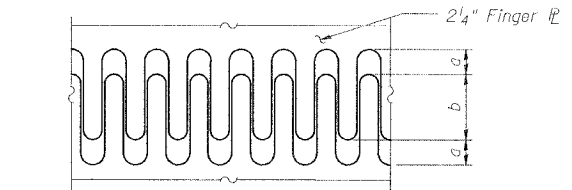
BILL OF MATERIAL

Bar	No.	Size	Length	Shape
a ₃₀₁ (E)	12	#5	38'-3"	---
a ₃₀₂ (E)	12	#5	17'-8"	---
b ₃₀₀ (E)	106	#4	6'-5"	C
Reinforcing Bars, Epoxy Coated		Pound	1150	
Bar Splicers		Ea.	12	
Fabric Reinforced Elastomeric Trough		Foot	60	
Concrete Removal		Cu. Yd.	13.2	
Concrete Superstructure		Cu. Yd.	13.2	
Finger Plate Expansion Joint, 3"		Foot	53	

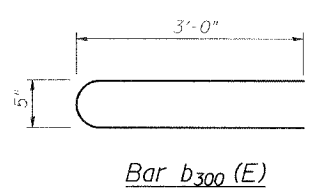
FINGER PLATE CUTTING DETAIL

a			b		
-30°F	50°F	130°F	-30°F	50°F	130°F
5 ³ / ₄ "	3 ¹ / ₄ "	3 ¹ / ₄ "	1 ¹ / ₂ "	4"	6 ¹ / ₂ "

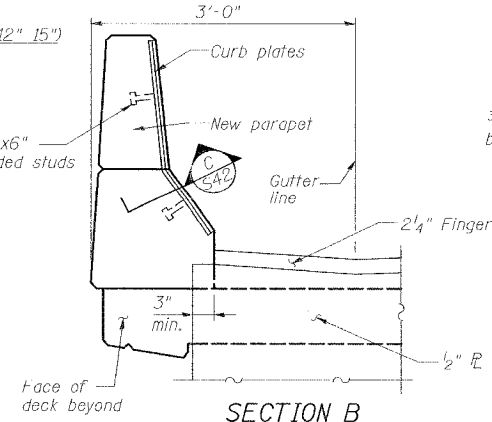
Note: For deck temperatures between those shown, interpolate between dimensions given above.



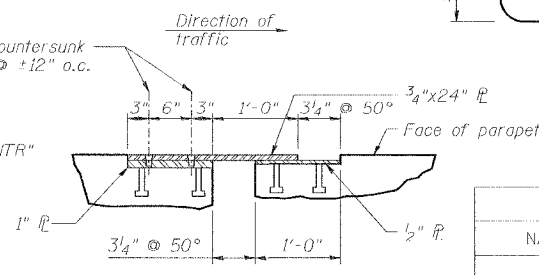
FINGER PLATE SETTING DIAGRAM



Bar b₃₀₀ (E)



SECTION B



SECTION C

Notes:

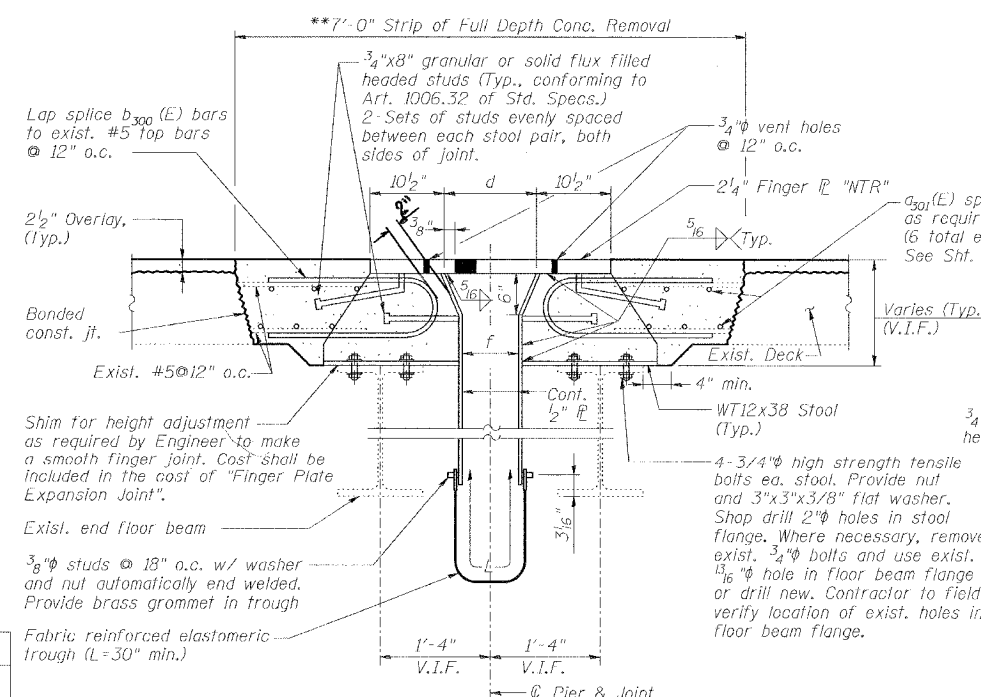
All steel for finger plate joint shall be M270 Grade 50. Curb plates and parapet not shown for clarity.

Slope trough 1"/ft towards outside from center of ramp cross-section. Details of trough at center splice and at both ends per Sht. S47

Adjust height of stool as required by shimming. Shims to be 1/8", 1/4", or 1/2" as required. Standard shim pack to include 1/2", 1/4", 1/8" and (2) 1/16" shims

Load carrying components designated "NTR" shall conform to the Supplemental Requirements for Notch Toughness, Zone 2.

Min Bar Laps	d			f		
	@ -30°F	@ 50°F	@ 130°F	@ -30°F	@ 50°F	@ 130°F
#4	13 ³ / ₄ "	11 ¹ / ₄ "	8 ³ / ₄ "	7 ³ / ₈ "	5"	2 ⁵ / ₈ "



SECTION A
** -At 50° F

REVISIONS	
NAME	DATE

SPECIAL JOINT DETAILS

STATE OF ILLINOIS
DEPARTMENT OF TRANSPORTATION
REHABILITATION AND RETROFIT REPAIRS
FAI ROUTE TO
POPLAR STREET BRIDGE APPROACHES
ST. CLAIR COUNTY

STRUCTURE NO. 082-0141 (ROADWAY A)
SCALE: N.T.S.
DATE: 02/01/2007

DATE: 1/25/2007
FILENAME: p:\2001\1201-1800\2001.1240\Drafting\RoadwayRehab_AT_RampA\join\A-JOIN04.dgn

DESIGNED	JPD
CHECKED	CSD
DRAWN	CLK
CHECKED	JPD