

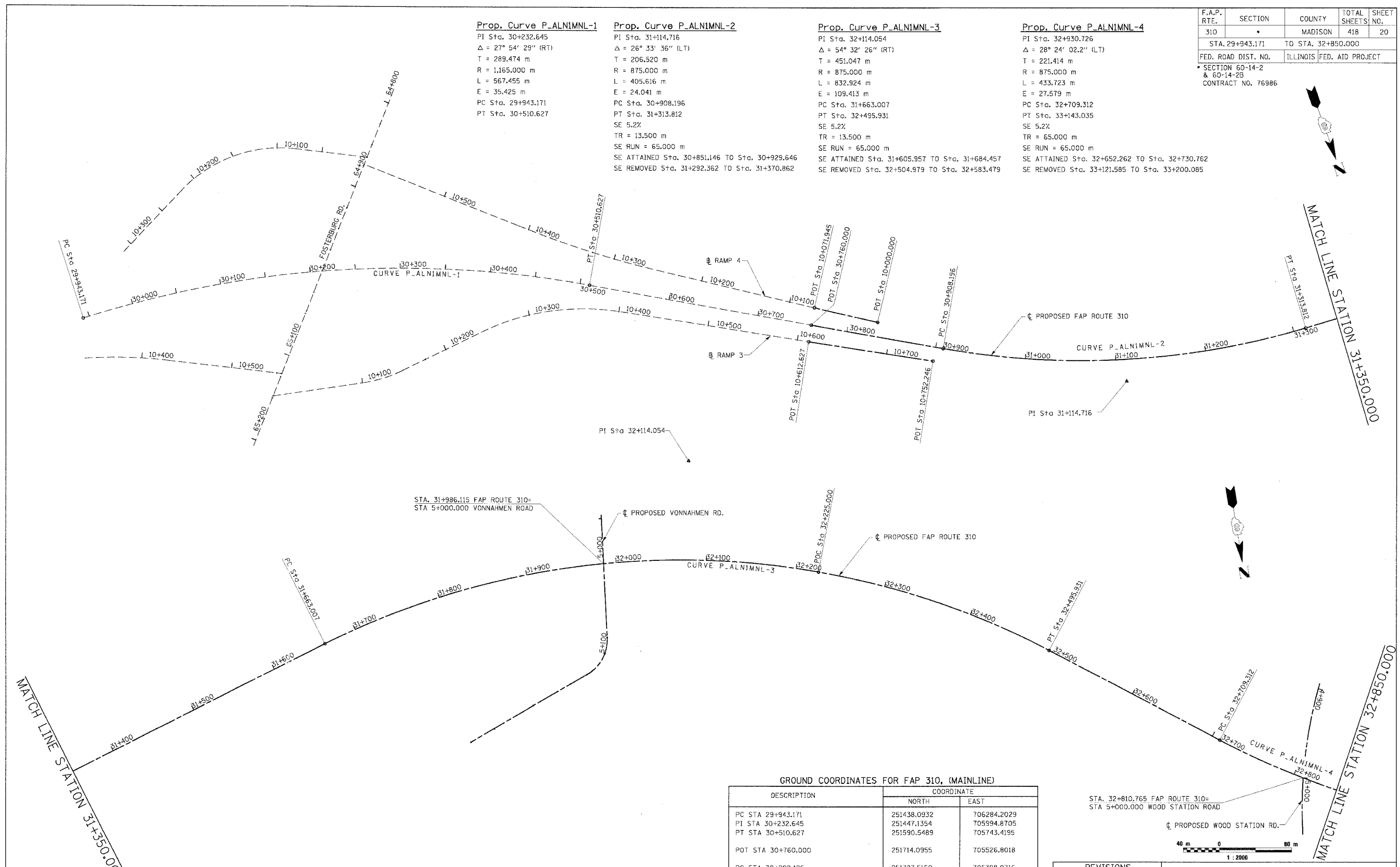
F.A.P. RTE.	SECTION	COUNTY	TOTAL SHEETS	SHEET NO.
310	*	MADISON	418	20
STA. 29+943.171		TO STA. 32+850.000		
FED. ROAD DIST. NO.		ILLINOIS FED. AID PROJECT		
SECTION 60-14-2 & 60-14-2B CONTRACT NO. 76986				

Prop. Curve P-ALNIMNL-1
 PI Sta. 30+232.645
 $\Delta = 27^\circ 54' 29''$ (RT)
 T = 289.474 m
 R = 1,165.000 m
 L = 567.455 m
 E = 35.425 m
 PC Sta. 29+943.171
 PT Sta. 30+510.627

Prop. Curve P-ALNIMNL-2
 PI Sta. 31+114.716
 $\Delta = 26^\circ 33' 36''$ (LT)
 T = 206.520 m
 R = 875.000 m
 L = 405.616 m
 E = 24.041 m
 PC Sta. 30+908.196
 PT Sta. 31+313.812
 SE 5.2%
 TR = 13.500 m
 SE RUN = 65.000 m
 SE ATTAINED Sta. 30+851.146 TO Sta. 30+929.646
 SE REMOVED Sta. 31+292.362 TO Sta. 31+370.862

Prop. Curve P-ALNIMNL-3
 PI Sta. 32+114.054
 $\Delta = 54^\circ 32' 26''$ (RT)
 T = 451.047 m
 R = 875.000 m
 L = 832.924 m
 E = 109.413 m
 PC Sta. 31+663.007
 PT Sta. 32+495.931
 SE 5.2%
 TR = 13.500 m
 SE RUN = 65.000 m
 SE ATTAINED Sta. 31+605.957 TO Sta. 31+684.457
 SE REMOVED Sta. 32+504.979 TO Sta. 32+583.479

Prop. Curve P-ALNIMNL-4
 PI Sta. 32+930.726
 $\Delta = 28^\circ 24' 02.2''$ (LT)
 T = 221.414 m
 R = 875.000 m
 L = 433.723 m
 E = 27.579 m
 PC Sta. 32+709.312
 PT Sta. 33+143.035
 SE 5.2%
 TR = 65.000 m
 SE RUN = 65.000 m
 SE ATTAINED Sta. 32+652.262 TO Sta. 32+730.762
 SE REMOVED Sta. 33+121.585 TO Sta. 33+200.085



GROUND COORDINATES FOR FAP 310, (RAMP 4)

DESCRIPTION	COORDINATE	
	NORTH	EAST
POT STA 10+071.945	251697.0814	705517.0976
POT STA 10+000.000	251736.0530	705456.6220

GROUND COORDINATES FOR FAP 310, (RAMP 3)

DESCRIPTION	COORDINATE	
	NORTH	EAST
POT STA 10+612.627	251730.1199	705535.9410
POT STA 10+752.246	251796.8940	705413.3250

GROUND COORDINATES FOR FAP 310, (MAINLINE)

DESCRIPTION	COORDINATE	
	NORTH	EAST
PC STA 29+943.171	251438.0932	706284.2029
PI STA 30+232.645	251447.1354	705994.8705
PT STA 30+510.627	251590.5489	705743.4195
POT STA 30+760.000	251714.0955	705526.8018
PC STA 30+908.196	251787.5160	705398.0716
PI STA 31+114.716	251889.8318	705218.6785
PT STA 31+313.812	251901.1365	705012.4684
PC STA 31+663.007	251920.2511	704663.7977
PI STA 32+114.054	251944.9410	704213.4270
POC STA 32+225.000	252123.0393	704149.9842
PT STA 32+495.931	252326.1033	703972.2659
PC STA 32+709.312	252506.4237	703856.1773

REVISIONS

NAME	DATE

ILLINOIS DEPARTMENT OF TRANSPORTATION
HORIZONTAL CONTROL
 FAP ROUTE 310
 FAP ROUTE 310 SECTION 60-14-2, 60-14-2B
 MADISON COUNTY
 DRAWN BY BANDY
 CHECKED BY STEUART
 DATE