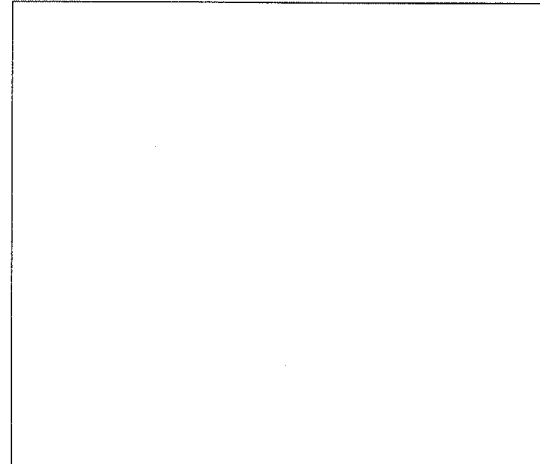
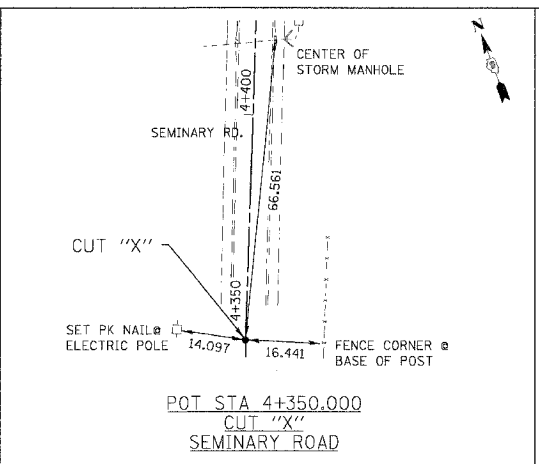


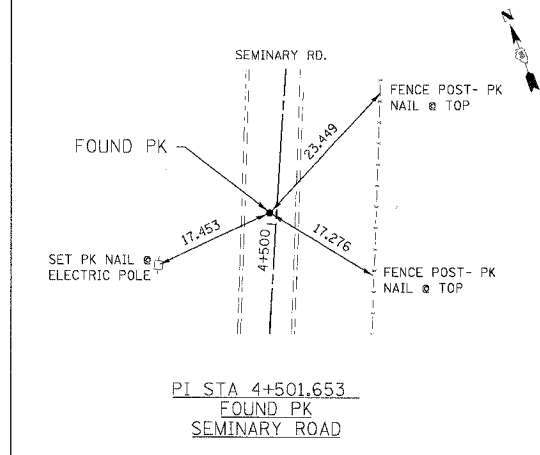
F.A.P. RTE.	SECTION	COUNTY	TOTAL SHEETS	SHEET NO.
310		MADISON	418	26
STA.	TO STA.			
FED. ROAD DIST. NO.	ILLINOIS FED. AID PROJECT			
SECTION 60-14-2 & 60-14-2B				
CONTRACT NO. 76986				



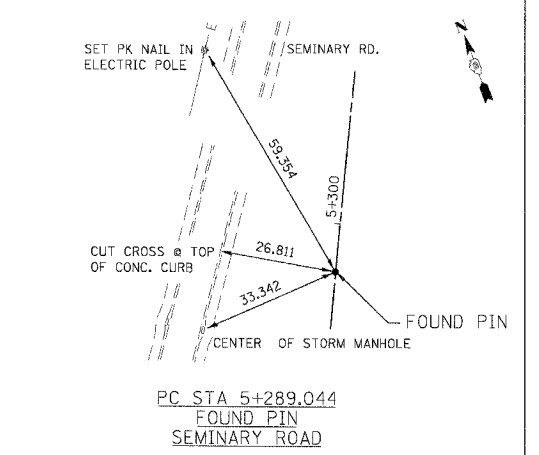
POT STA 4+215.000  
CUT "X"  
SEMINARY ROAD



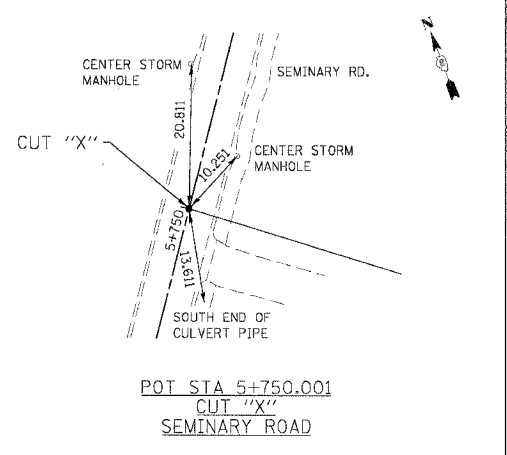
POT STA 4+350.000  
CUT "X"  
SEMINARY ROAD



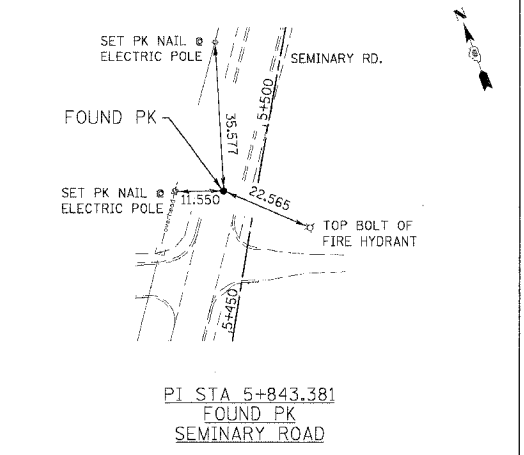
PI STA 4+501.653  
FOUND PK  
SEMINARY ROAD



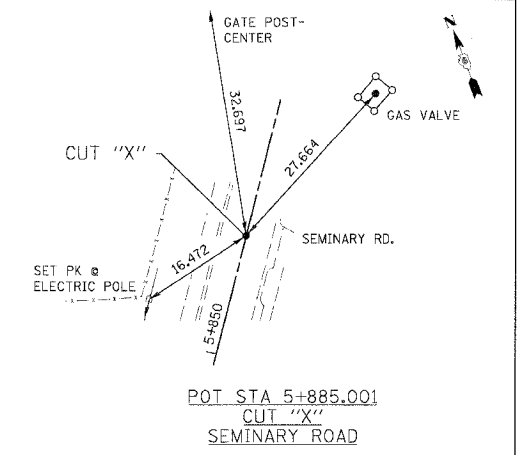
PC STA 5+289.044  
FOUND PIN  
SEMINARY ROAD



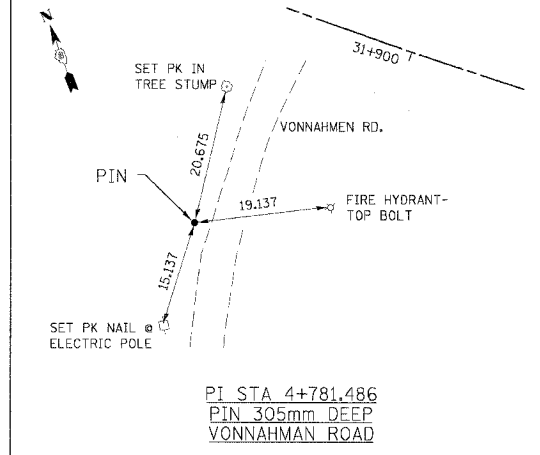
POT STA 5+750.001  
CUT "X"  
SEMINARY ROAD



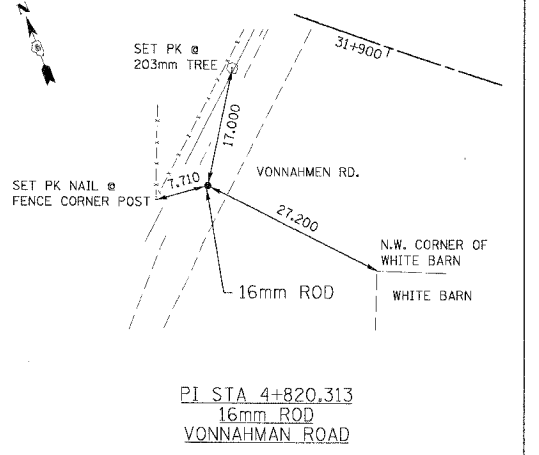
PI STA 5+843.381  
FOUND PK  
SEMINARY ROAD



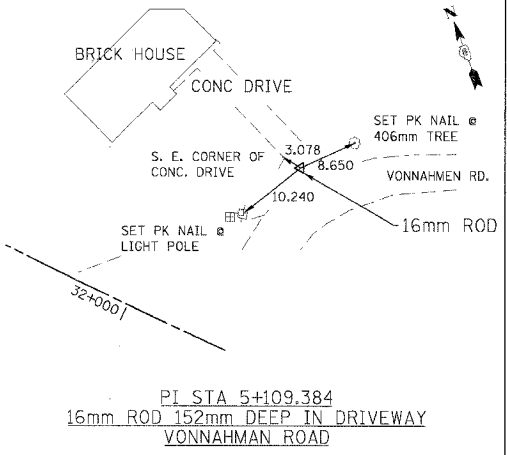
POT STA 5+885.001  
CUT "X"  
SEMINARY ROAD



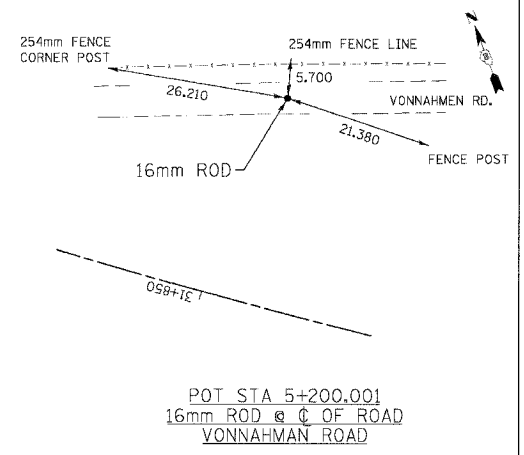
PI STA 4+781.486  
PIN 305mm DEEP  
VONNAHMAN ROAD



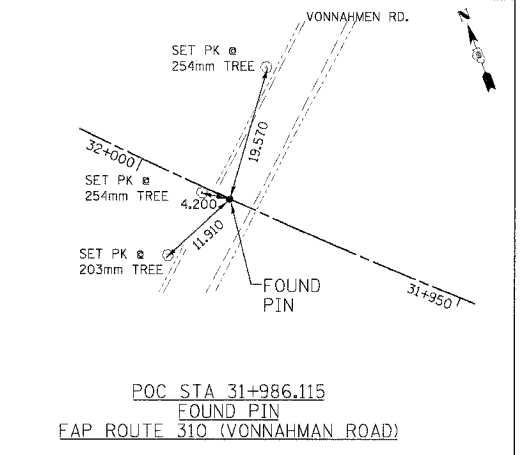
PI STA 4+820.313  
16mm ROD  
VONNAHMAN ROAD



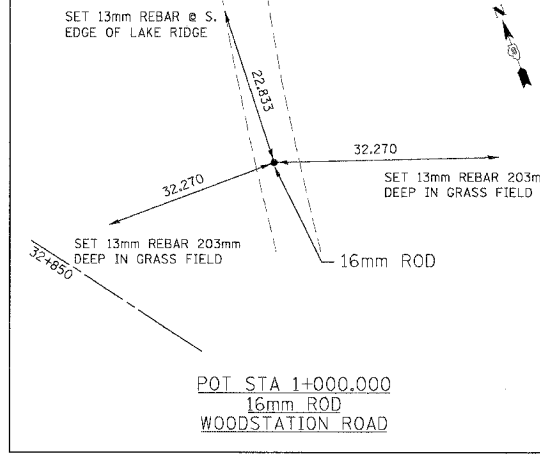
PI STA 5+109.384  
16mm ROD 152mm DEEP IN DRIVEWAY  
VONNAHMAN ROAD



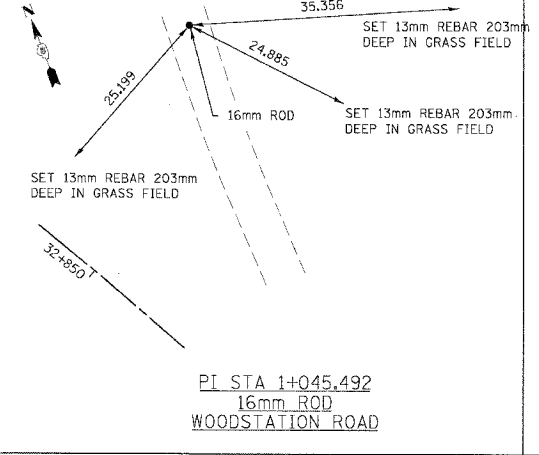
POT STA 5+200.001  
16mm ROD @ C OF ROAD  
VONNAHMAN ROAD



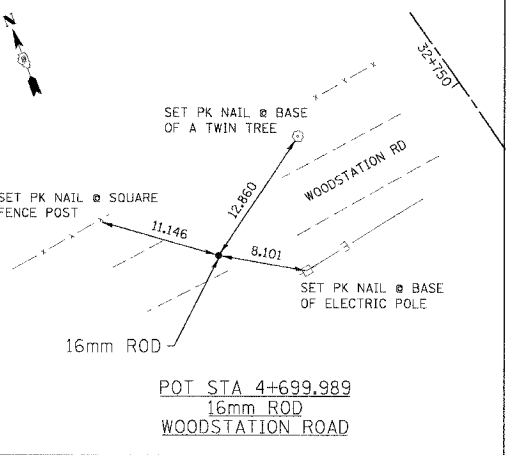
POC STA 31+986.115  
FOUND PIN  
FAP ROUTE 310 (VONNAHMAN ROAD)



POT STA 1+000.000  
16mm ROD  
WOODSTATION ROAD



PI STA 1+045.492  
16mm ROD  
WOODSTATION ROAD



POT STA 4+699.989  
16mm ROD  
WOODSTATION ROAD

REVISIONS	
NAME	DATE

ILLINOIS DEPARTMENT OF TRANSPORTATION  
**TIE POINTS**  
FAP ROUTE 310  
FAP ROUTE 310 SECTION 60-14-2, 60-14-2B  
MADISON COUNTY  
DRAWN BY CLARK  
CHECKED BY STEUART  
DATE