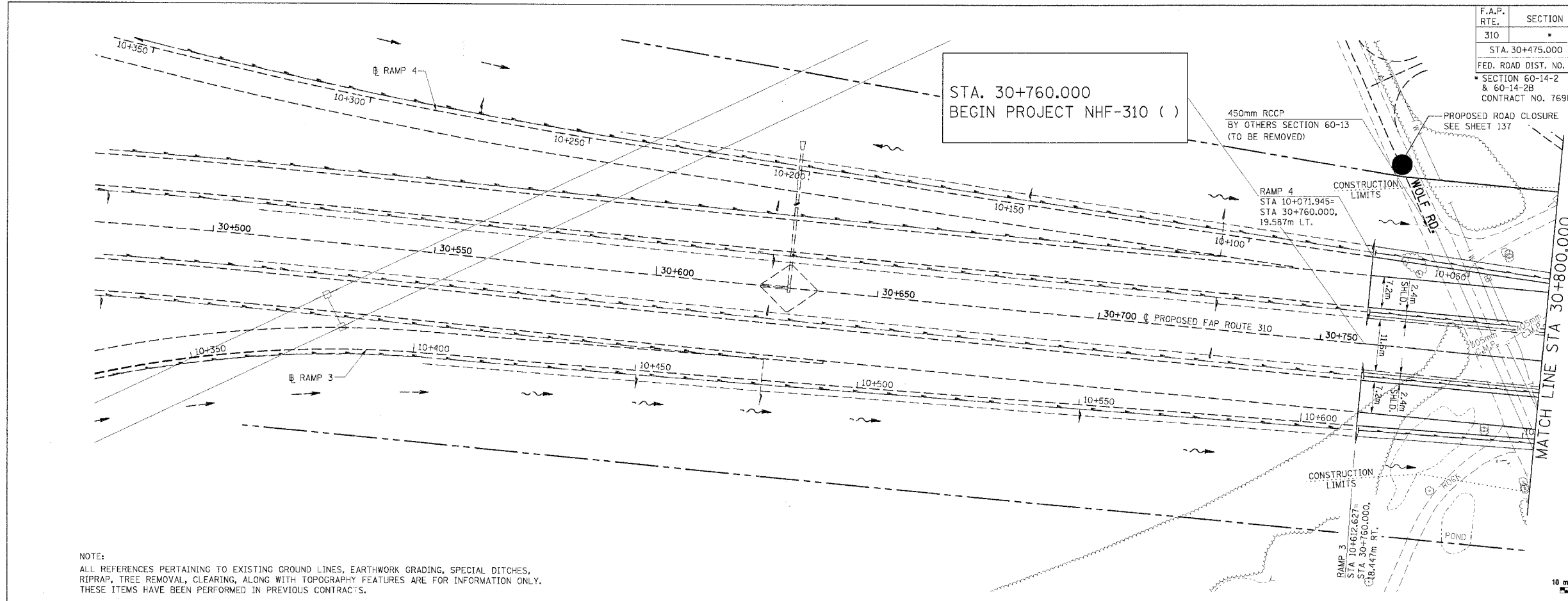
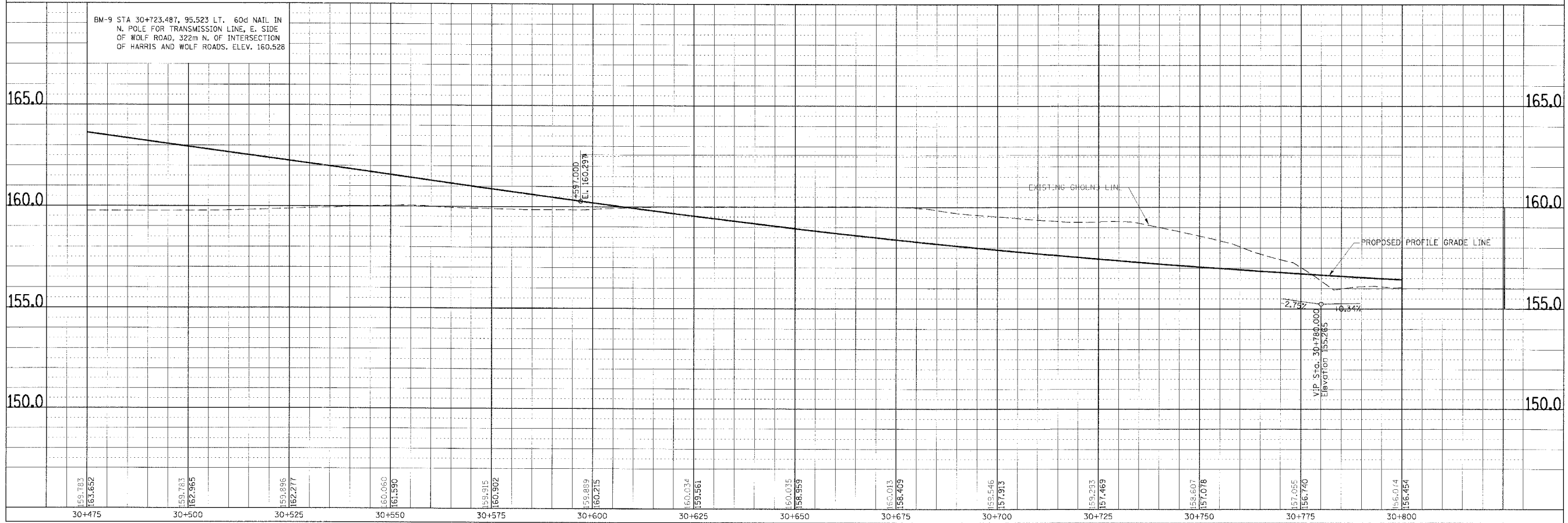


F.A.P. RTE.	SECTION	COUNTY	TOTAL SHEETS	SHEET NO.
310		MADISON	418	28
STA. 30+475.000		TO STA. 30+800.000		
FED. ROAD DIST. NO.	ILLINOIS FED. AID PROJECT			
SECTION 60-14-2 & 60-14-2B	CONTRACT NO. 76986			



NOTE:
 ALL REFERENCES PERTAINING TO EXISTING GROUND LINES, EARTHWORK GRADING, SPECIAL DITCHES, RIPRAP, TREE REMOVAL, CLEARING, ALONG WITH TOPOGRAPHY FEATURES ARE FOR INFORMATION ONLY. THESE ITEMS HAVE BEEN PERFORMED IN PREVIOUS CONTRACTS.

FINAL SURVEY	BY	DATE
SURVEY PLOTTED		
NOTE BOOK TEMPLATE AREAS CHECKED		
NO.		



ORIGINAL SURVEY	BY	DATE
SURVEY PLOTTED		
NOTE BOOK TEMPLATE AREAS CHECKED		
NO.		

PLAN & PROFILE, FAP ROUTE 310, STA. 30+475.000 TO STA. 30+800.000