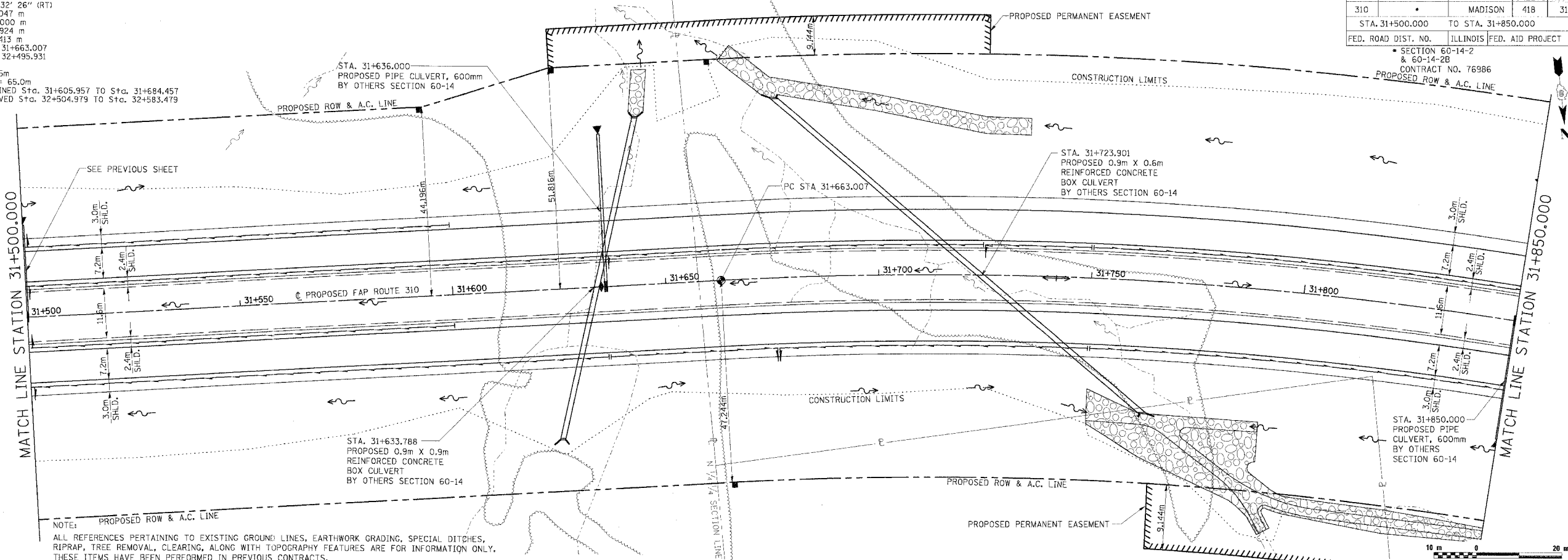


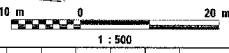
**CURVE P-ALN1MNL-3**

PI Sta. 32+114.054  
 $\Delta = 54^\circ 32' 26''$  (RT)  
 T = 451.047 m  
 R = 875.000 m  
 L = 832.924 m  
 E = 109.413 m  
 PC Sta. 31+663.007  
 PT Sta. 32+495.931  
 SE 5.2%  
 TR = 13.5m  
 SE RUN = 65.0m  
 SE ATTAINED Sta. 31+605.957 TO Sta. 31+684.457  
 SE REMOVED Sta. 32+504.979 TO Sta. 32+583.479

F.A.P. RTE.	SECTION	COUNTY	TOTAL SHEETS	SHEET NO.
310		MADISON	418	31
STA. 31+500.000		TO STA. 31+850.000		
FED. ROAD DIST. NO.		ILLINOIS FED. AID PROJECT		
SECTION 60-14-2 & 60-14-2B CONTRACT NO. 76986				

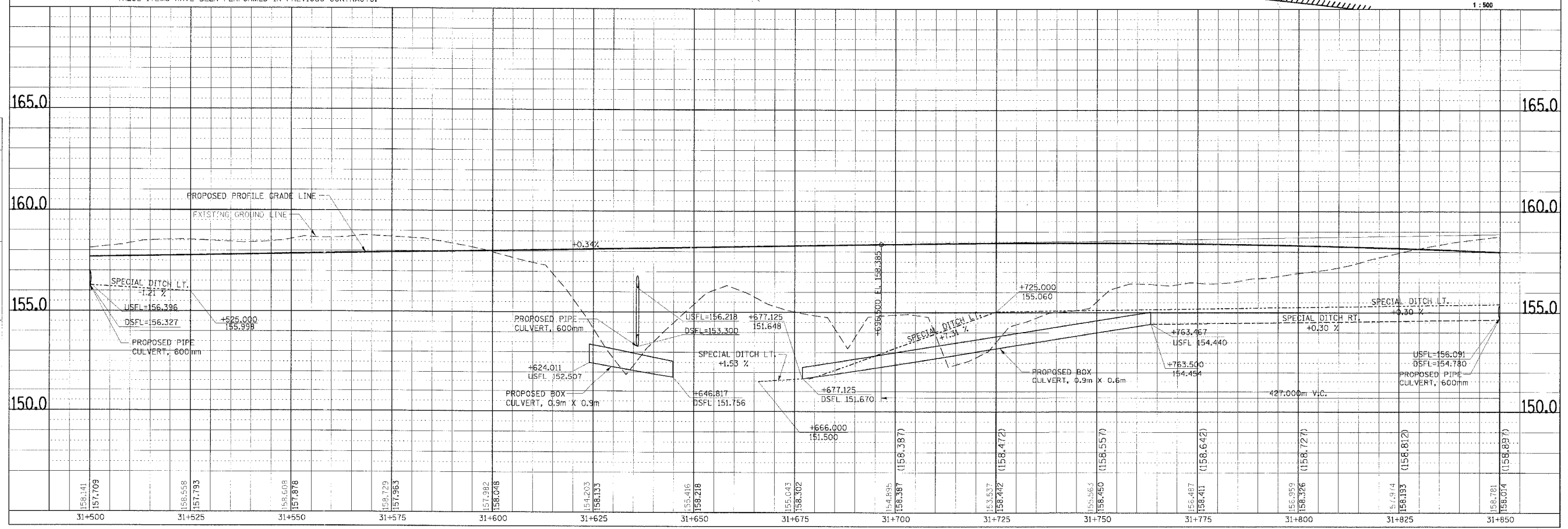


NOTE: PROPOSED ROW & A.C. LINE  
 ALL REFERENCES PERTAINING TO EXISTING GROUND LINES, EARTHWORK GRADING, SPECIAL DITCHES, RIPRAP, TREE REMOVAL, CLEARING, ALONG WITH TOPOGRAPHY FEATURES ARE FOR INFORMATION ONLY. THESE ITEMS HAVE BEEN PERFORMED IN PREVIOUS CONTRACTS.



FINAL SURVEY	BY	DATE
NO.		

ORIGINAL SURVEY	BY	DATE
NO.		



PLAN & PROFILE, FAP ROUTE 310, STA. 31+500.000 TO STA. 31+850.000

Digitized by: [unreadable]