

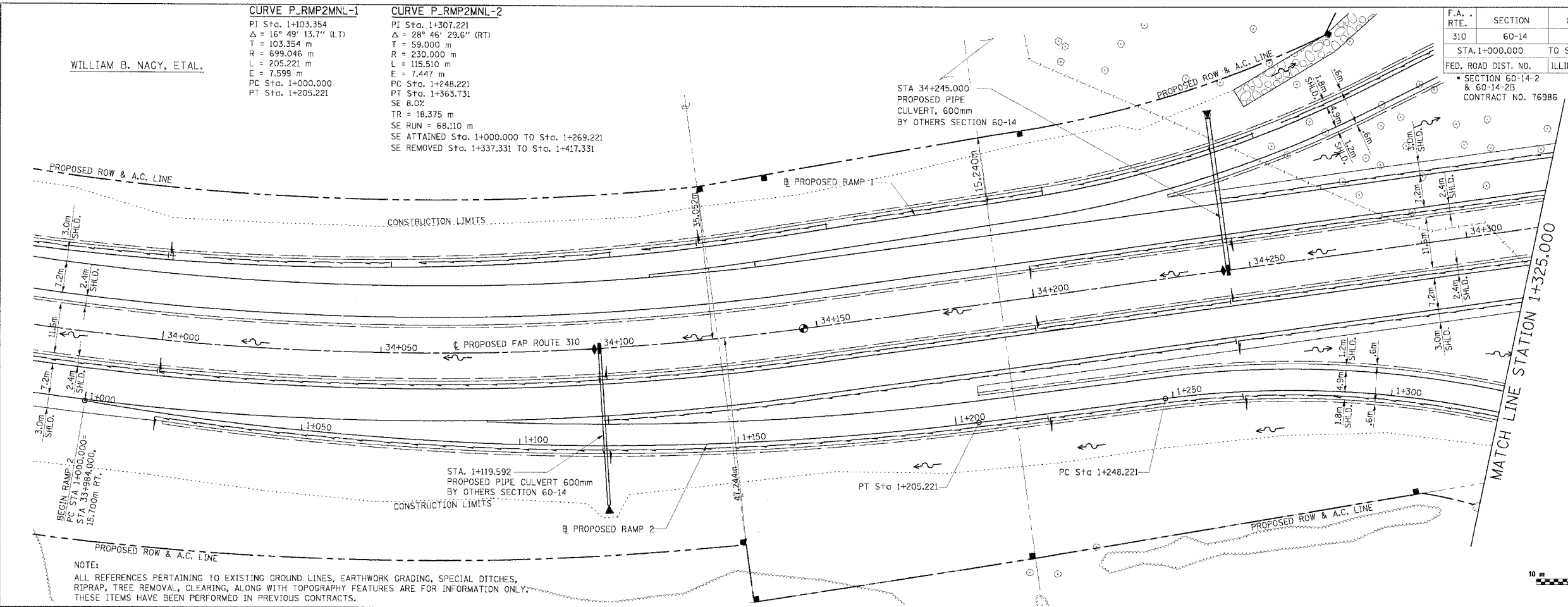
WILLIAM B. NACY, ETAL.

**CURVE P\_RMP2MNL-1**  
 PI Sta. 1+103.354  
 $\Delta = 16^\circ 49' 13.7''$  (LT)  
 T = 103.354 m  
 R = 699.046 m  
 L = 205.221 m  
 E = 7.599 m  
 PC Sta. 1+000.000  
 PT Sta. 1+205.221

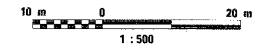
**CURVE P\_RMP2MNL-2**  
 PI Sta. 1+307.221  
 $\Delta = 28^\circ 46' 29.6''$  (RT)  
 T = 59.000 m  
 R = 230.000 m  
 L = 115.510 m  
 E = 7.447 m  
 PC Sta. 1+248.221  
 PT Sta. 1+363.731  
 SE 8.0%  
 TR = 18.375 m  
 SE RUN = 68.110 m  
 SE ATTAINED Sta. 1+000.000 TO Sta. 1+269.221  
 SE REMOVED Sta. 1+337.331 TO Sta. 1+417.331

F.A. RTE.	SECTION	COUNTY	TOTAL SHEETS	SHEET NO.
310	60-14	MADISON	418	45
STA. 1+000.000		TO STA. 1+325.000		
FED. ROAD DIST. NO.		ILLINOIS	FED. AID PROJECT	
SECTION 60-14-2 & 60-14-2B		CONTRACT NO. 76986		

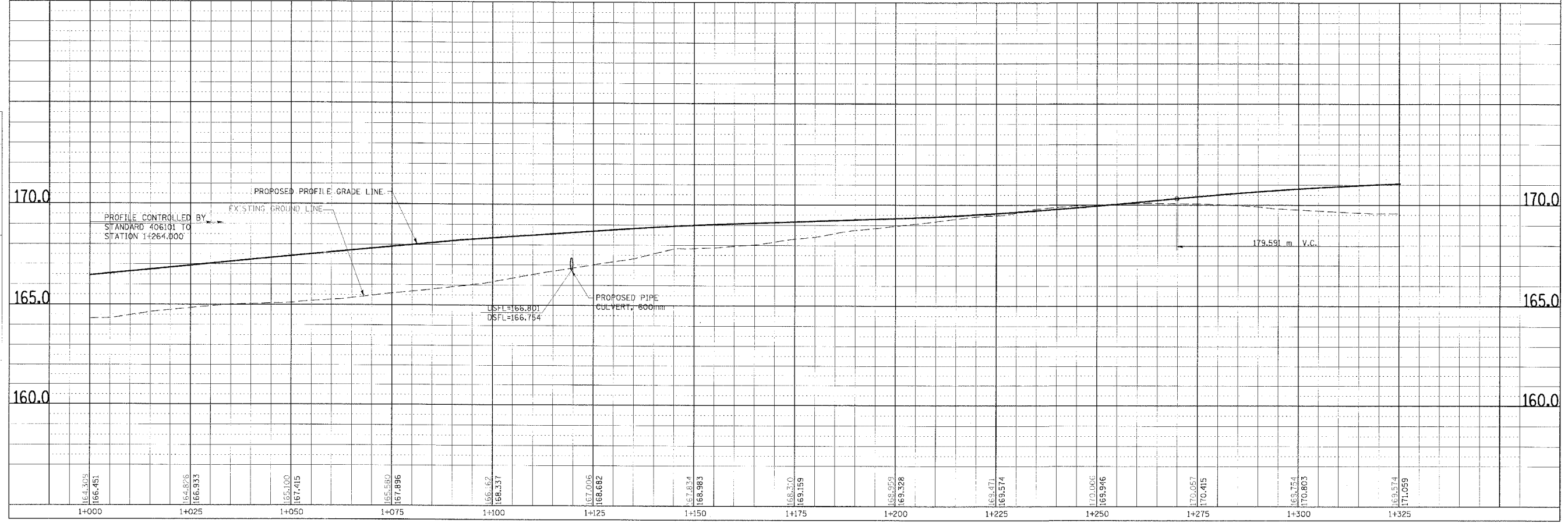
NO.	DATE	BY	FINAL SURVEY PLOTTED	NO. OF BOOM TEMPLATE	AREAS CHECKED



NOTE:  
 ALL REFERENCES PERTAINING TO EXISTING GROUND LINES, EARTHWORK GRADING, SPECIAL DITCHES, RIPRAP, TREE REMOVAL, CLEARING, ALONG WITH TOPOGRAPHY FEATURES ARE FOR INFORMATION ONLY. THESE ITEMS HAVE BEEN PERFORMED IN PREVIOUS CONTRACTS.



NO.	DATE	BY	ORIGINAL SURVEY PLOTTED	NO. OF BOOM TEMPLATE	AREAS CHECKED



PLAN & PROFILE, RAMP 2, STA. 1+000.000 TO STA. 1+325.000