

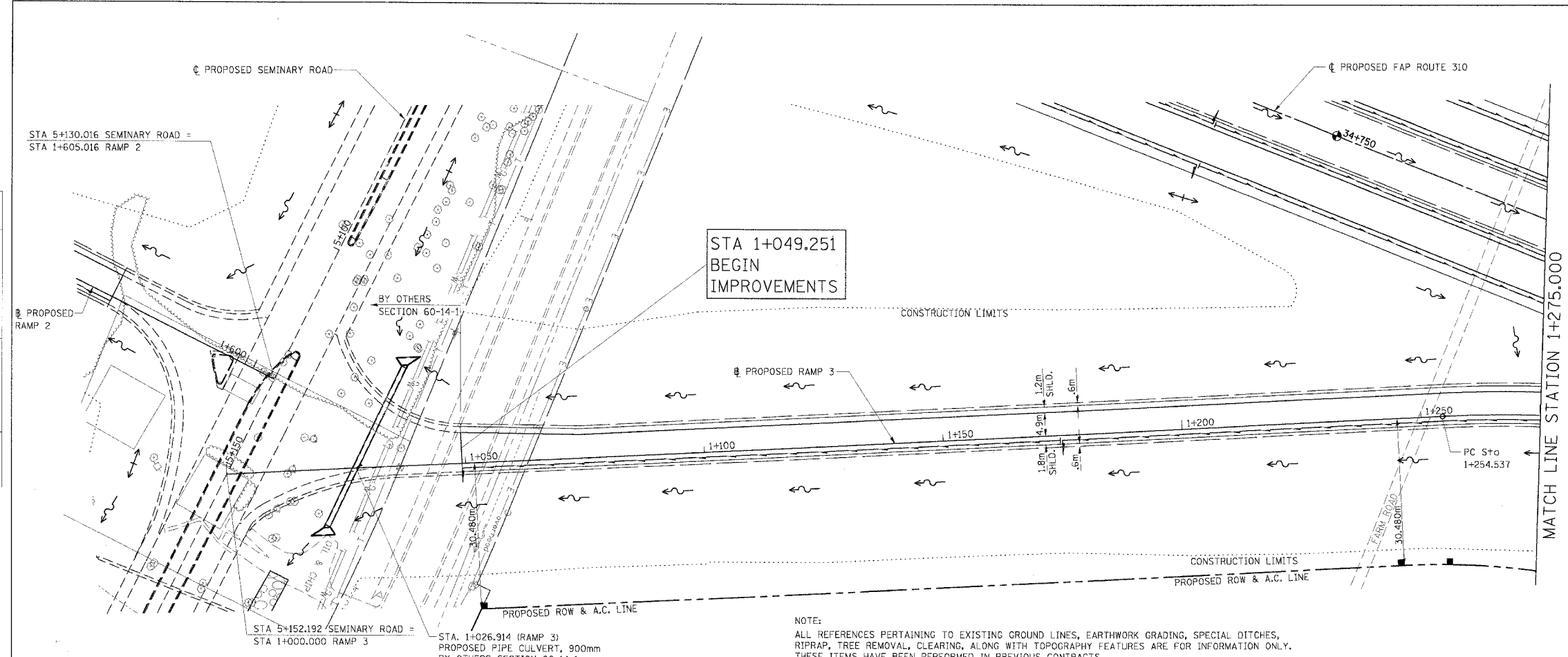
F.A.P. RTE.	SECTION	COUNTY	TOTAL SHEETS	SHEET NO.
310		MADISON	418	47
STA. 1+000.000 TO STA. 1+275.000				
FED. ROAD DIST. NO.		ILLINOIS	FED. AID PROJECT	
SECTION 60-14-2 & 60-14-2B CONTRACT NO. 76986				



CURVE P_RMP3MNL-1
 PI Sta. 1+308.272
 $\Delta = 23^\circ 21' 15.2''$ (RT)
 T = 53.735 m
 R = 260.000 m
 L = 105.978 m
 E = 5.495 m
 PC Sta. 1+254.537
 PT Sta. 1+360.515
 SE 8.0%
 TR = 18.375m
 SE RUN = 39.578m
 SE ATTAINED Sta. 1+200.937 TO Sta. 1+280.937
 SE REMOVED Sta. 1+320.515 TO Sta. 1+400.515

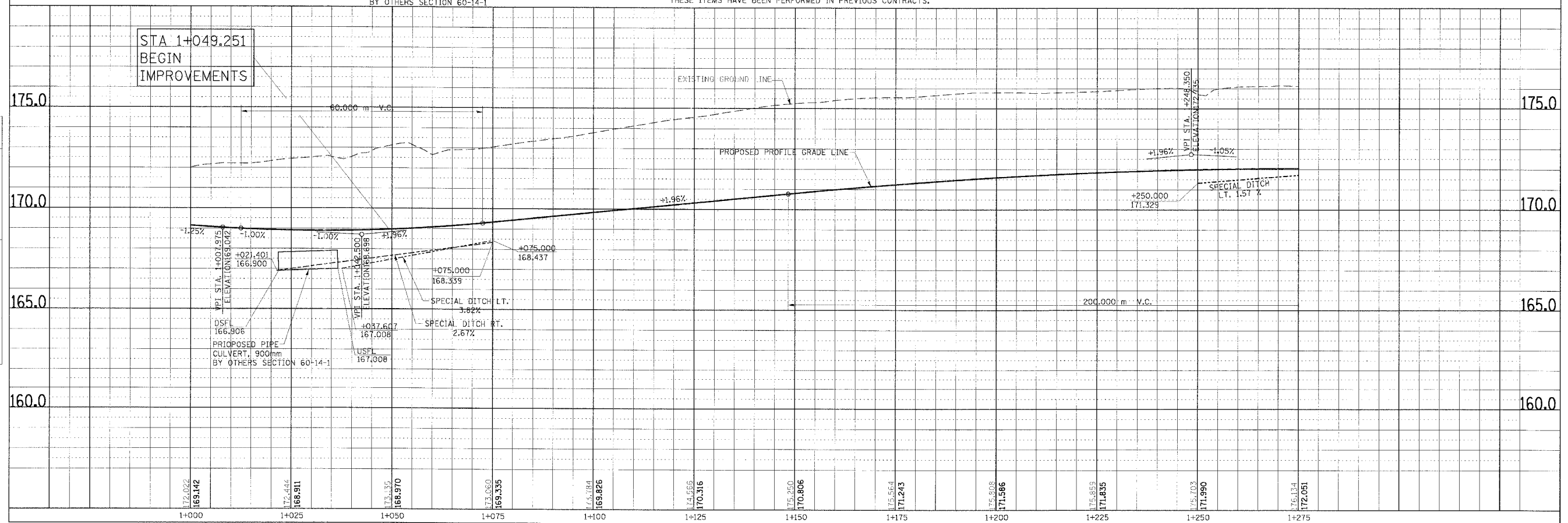


FINAL SURVEY	DATE
SURVEYED	
BY	
PLOTTED	
NOTE BOOK	
NO.	
AREAS CHECKED	



NOTE:
 ALL REFERENCES PERTAINING TO EXISTING GROUND LINES, EARTHWORK GRADING, SPECIAL DITCHES, RIPRAP, TREE REMOVAL, CLEARING, ALONG WITH TOPOGRAPHY FEATURES ARE FOR INFORMATION ONLY. THESE ITEMS HAVE BEEN PERFORMED IN PREVIOUS CONTRACTS.

ORIGINAL SURVEY	DATE
SURVEYED	
BY	
PLOTTED	
NOTE BOOK	
NO.	
AREAS CHECKED	



PLAN & PROFILE, RAMP 3, STA. 1+000.000 TO STA. 1+275.000