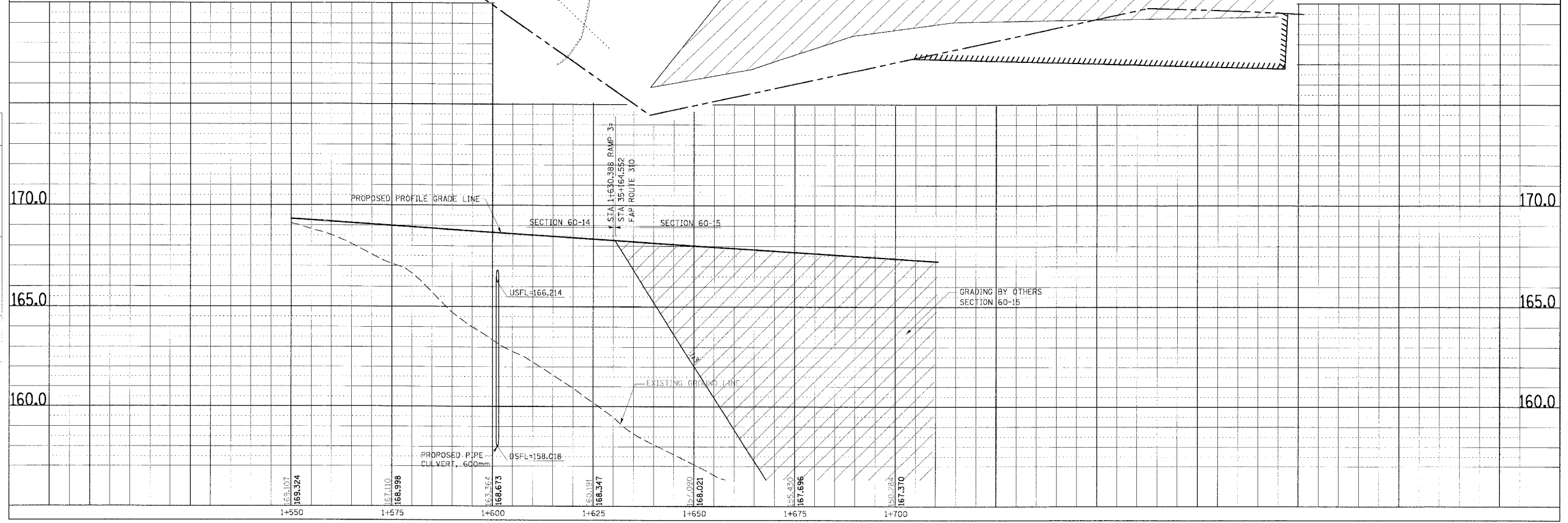
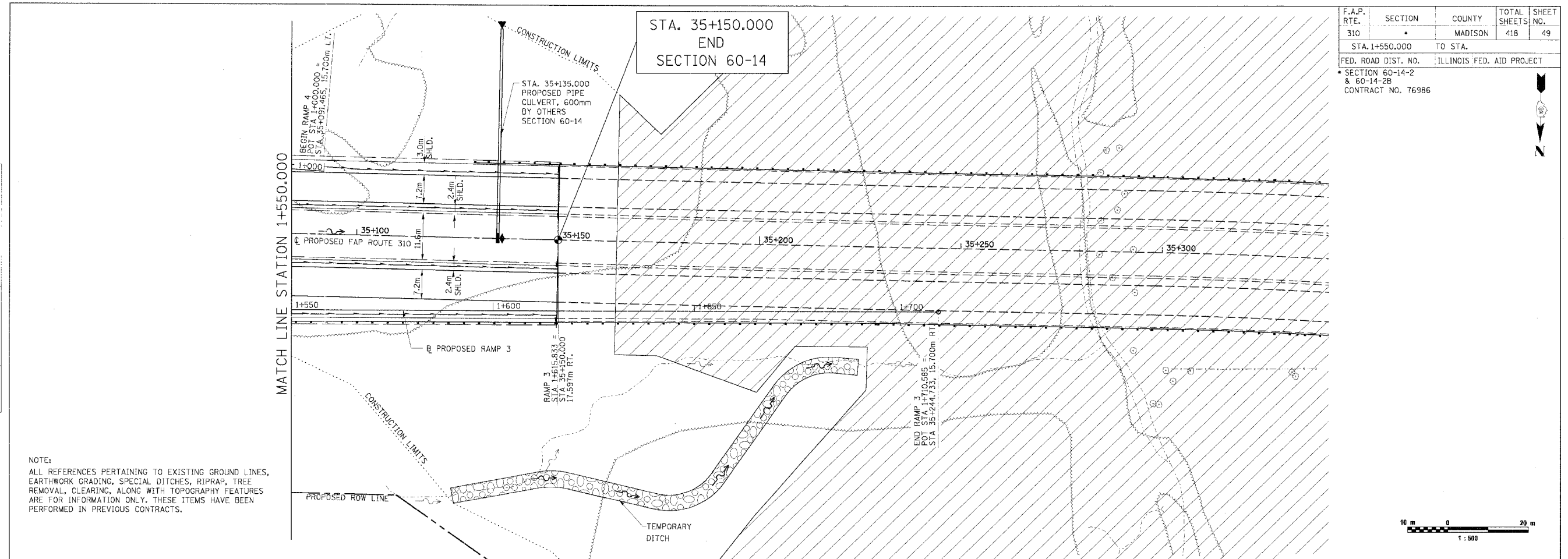
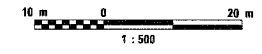


F.A.P. RTE.	SECTION	COUNTY	TOTAL SHEETS	SHEET NO.
310		MADISON	418	49
STA. 1+550.000		TO STA.		
FED. ROAD DIST. NO.		ILLINOIS FED. AID PROJECT		
SECTION 60-14-2 & 60-14-2B		CONTRACT NO. 76986		



NOTE:
ALL REFERENCES PERTAINING TO EXISTING GROUND LINES, EARTHWORK GRADING, SPECIAL DITCHES, RIPRAP, TREE REMOVAL, CLEARING, ALONG WITH TOPOGRAPHY FEATURES ARE FOR INFORMATION ONLY. THESE ITEMS HAVE BEEN PERFORMED IN PREVIOUS CONTRACTS.

FINAL SURVEY PLOTTED	BY	DATE
NO.	AREAS CHECKED	

ORIGINAL SURVEY PLOTTED	BY	DATE
NO.	AREAS CHECKED	

PLAN & PROFILE, RAMP 3, STA. 1+550.000 TO STA. 1+700.000