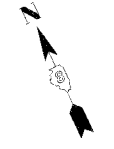
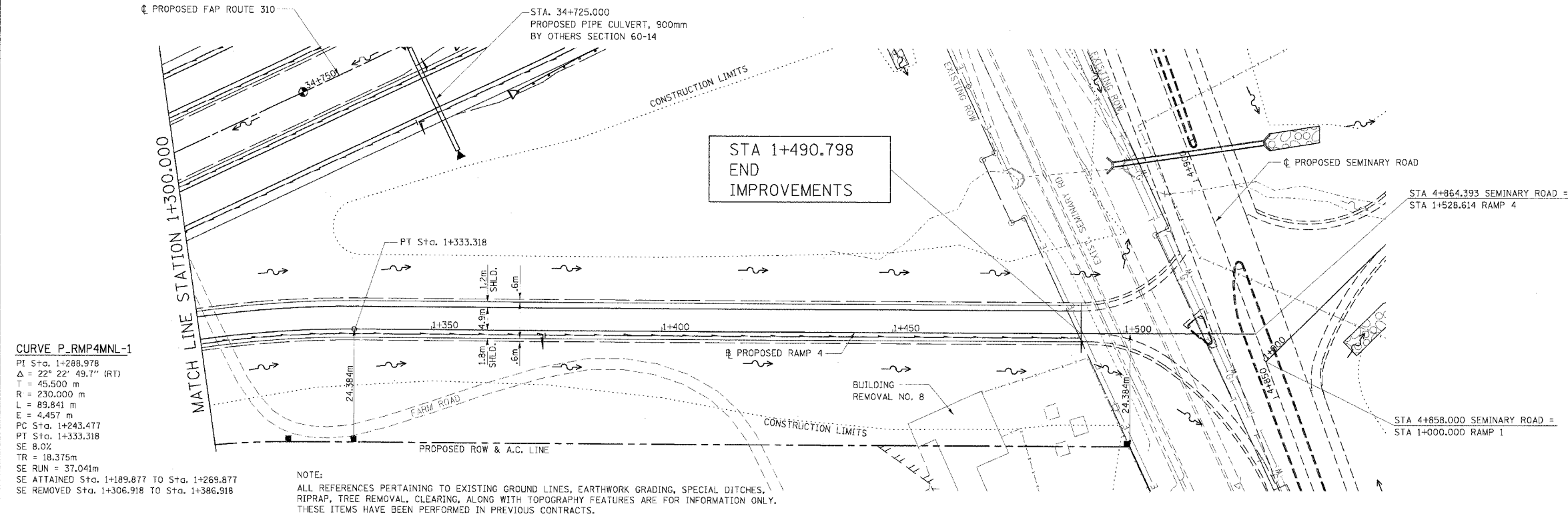


F.A.P. RTE.	SECTION	COUNTY	TOTAL SHEETS	SHEET NO.
310	*	MADISON	418	51
STA. 1+300.000		TO STA. 1+528.614		
FED. ROAD DIST. NO.		ILLINOIS FED. AID PROJECT		
SECTION 60-14-2 & 60-14-2B				
CONTRACT NO. 76986				

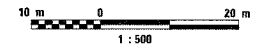


DATE	BY

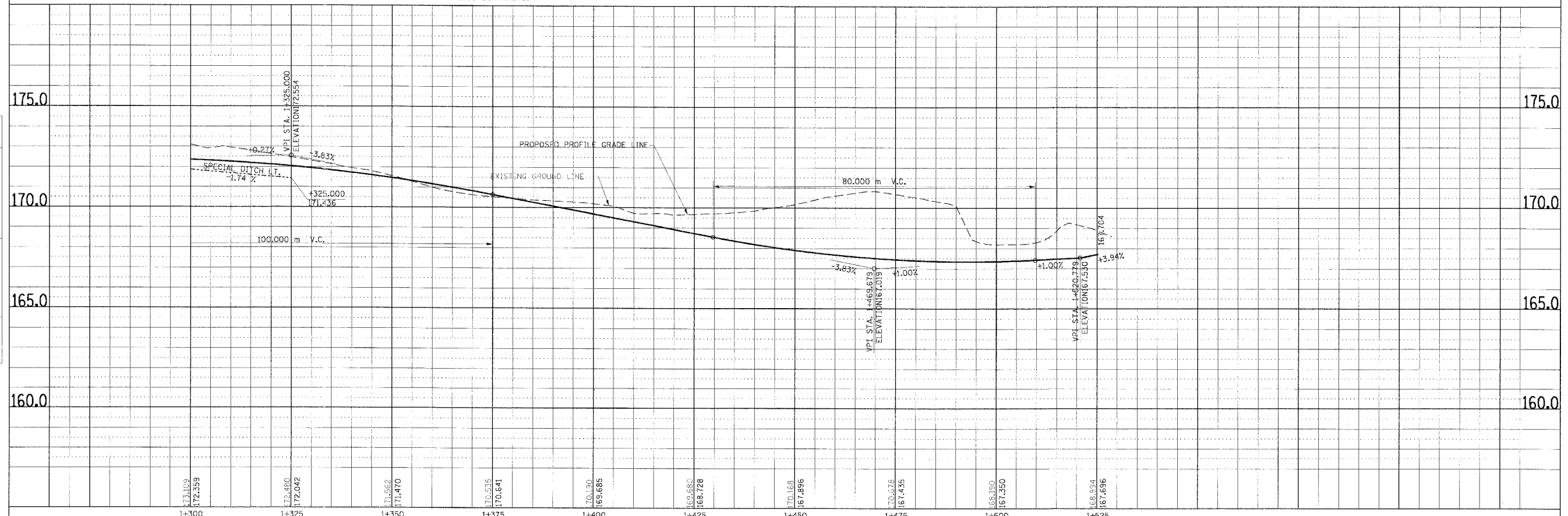


**CURVE P\_RMP4MNL-1**  
 PI Sta. 1+288.978  
 $\Delta = 22^\circ 22' 49.7''$  (RT)  
 T = 45.500 m  
 R = 230.000 m  
 L = 89.841 m  
 E = 4.457 m  
 PC Sta. 1+243.477  
 PT Sta. 1+333.318  
 SE 8.0%  
 TR = 18.375m  
 SE RUN = 37.041m  
 SE ATTAINED Sta. 1+189.877 TO Sta. 1+269.877  
 SE REMOVED Sta. 1+306.918 TO Sta. 1+386.918

NOTE:  
 ALL REFERENCES PERTAINING TO EXISTING GROUND LINES, EARTHWORK GRADING, SPECIAL DITCHES, RIPRAP, TREE REMOVAL, CLEARING, ALONG WITH TOPOGRAPHY FEATURES ARE FOR INFORMATION ONLY. THESE ITEMS HAVE BEEN PERFORMED IN PREVIOUS CONTRACTS.



DATE	BY



PLAN & PROFILE, RAMP 4, STA. 1+300.000 TO STA. 1+528.614