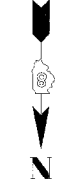


F.A.P. RTE.	SECTION	COUNTY	TOTAL SHEETS	SHEET NO.
310	*	MADISON	418	52
STA.		TO STA.		
FED. ROAD DIST. NO.		ILLINOIS	FED. AID PROJECT	
SECTION 60-14-2 & 60-14-2B		CONTRACT NO. 76986		



CURVE P_ALNISEM-1
 PI Sta. 4+501.653
 $\Delta = 3^\circ 10' 08''$ (RT)
 T = 67.354 m
 R = 2,435.000 m
 L = 134.674 m
 E = 0.931 m
 PC Sta. 4+434.299
 PT Sta. 4+568.972

CURVE P_RMP1MNL-2
 PI Sta. 1+610.213
 $\Delta = 27^\circ 27' 07.4''$ (RT)
 T = 147.854 m
 R = 605.326 m
 L = 290.029 m
 E = 17.795 m
 PC Sta. 1+462.359
 PT Sta. 1+752.388
 SE 5.9%

CURVE P_RMP1MNL-1
 PI Sta. 1+362.205
 $\Delta = 17^\circ 50' 33.8''$ (RT)
 T = 40.814 m
 R = 260.000 m
 L = 80.968 m
 E = 3.184 m
 PC Sta. 1+321.391
 PT Sta. 1+402.358
 SE 8.0%
 TR = 18.375 m
 SE RUN = 10.911 m
 SE ATTAINED Sta. 1+276.131 TO Sta. 1+356.131
 SE REMOVED Sta. 1+367.042 TO Sta. 1+407.042

CURVE P_RMP4MNL-1
 PI Sta. 1+288.978
 $\Delta = 22^\circ 22' 49.7''$ (RT)
 T = 45.500 m
 R = 230.000 m
 L = 89.841 m
 E = 4.457 m
 PC Sta. 1+243.477
 PT Sta. 1+333.318
 SE 8.0%
 TR = 18.375 m
 SE RUN = 37.041 m
 SE ATTAINED Sta. 1+189.877 TO Sta. 1+269.877
 SE REMOVED Sta. 1+306.918 TO Sta. 1+386.918

CURVE P_ALNIMNL-5
 PI Sta. 33+988.284
 $\Delta = 29^\circ 16' 39''$ (LT)
 T = 165.863 m
 R = 635.000 m
 L = 324.476 m
 E = 21.304 m
 PC Sta. 33+822.421
 PT Sta. 34+146.898
 SE 5.9%
 TR = 65.000 m
 SE RUN = 65.000 m
 SE ATTAINED Sta. 33+765.371 TO Sta. 33+843.871
 SE REMOVED Sta. 34+125.448 TO Sta. 34+203.948

CURVE P_RMP2MNL-1
 PI Sta. 1+103.354
 $\Delta = 16^\circ 49' 13.7''$ (LT)
 T = 103.354 m
 R = 699.046 m
 L = 205.221 m
 E = 7.599 m
 PC Sta. 1+000.000
 PT Sta. 1+205.221

CURVE P_RMP2MNL-2
 PI Sta. 1+307.221
 $\Delta = 28^\circ 46' 29.6''$ (RT)
 T = 59.000 m
 R = 230.000 m
 L = 115.510 m
 E = 7.447 m
 PC Sta. 1+248.221
 PT Sta. 1+363.731
 SE 8.0%
 TR = 18.375 m
 SE RUN = 68.110 m
 SE ATTAINED Sta. 1+000.000 TO Sta. 1+269.221
 SE REMOVED Sta. 1+337.331 TO Sta. 1+417.331

CURVE P_RMP2MNL-3
 PI Sta. 1+491.641
 $\Delta = 24^\circ 25' 14.8''$ (LT)
 T = 31.377 m
 R = 145.000 m
 L = 61.802 m
 E = 3.356 m
 PC Sta. 1+460.264
 PT Sta. 1+522.066
 SE 7.84%
 TR = 18.375 m
 SE RUN = 7.852 m
 SE ATTAINED Sta. 1+417.331 TO Sta. 1+481.714
 SE REMOVED Sta. 1+489.566 TO Sta. 1+554.566

CURVE P_ALNISEM-2
 PI Sta. 5+483.381
 $\Delta = 9^\circ 07' 34''$ (RT)
 T = 194.337 m
 R = 2,435.000 m
 L = 387.852 m
 E = 7.743 m
 PC Sta. 5+289.044
 PT Sta. 5+676.896

CURVE P_RMP3MNL-1
 PI Sta. 1+308.272
 $\Delta = 23^\circ 21' 15.2''$ (RT)
 T = 53.735 m
 R = 260.000 m
 L = 105.978 m
 E = 5.495 m
 PC Sta. 1+254.537
 PT Sta. 1+360.515
 SE 8.0%
 TR = 18.375 m
 SE RUN = 39.578 m
 SE ATTAINED Sta. 1+200.937 TO Sta. 1+280.937
 SE REMOVED Sta. 1+320.515 TO Sta. 1+400.515



REVISIONS	
NAME	DATE

ILLINOIS DEPARTMENT OF TRANSPORTATION
 INTERCHANGE LAYOUT
 SEMINARY ROAD INTERCHANGE
 FAP ROUTE 310
 FAP ROUTE 310 SECTION 60-14-2, 60-14-2B
 MADISON COUNTY
 DRAWN BY DAVID
 CHECKED BY STEUART
 DATE

INTERCHANGE LAYOUT, SEMINARY ROAD INTERSECTION

