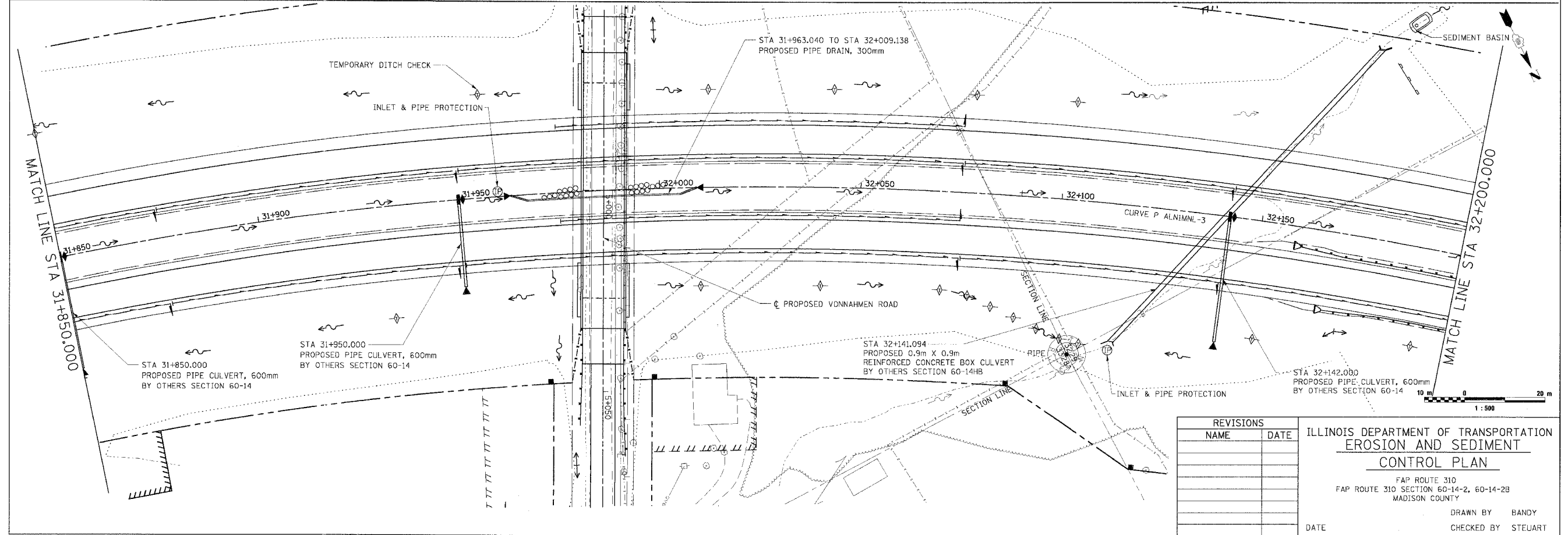
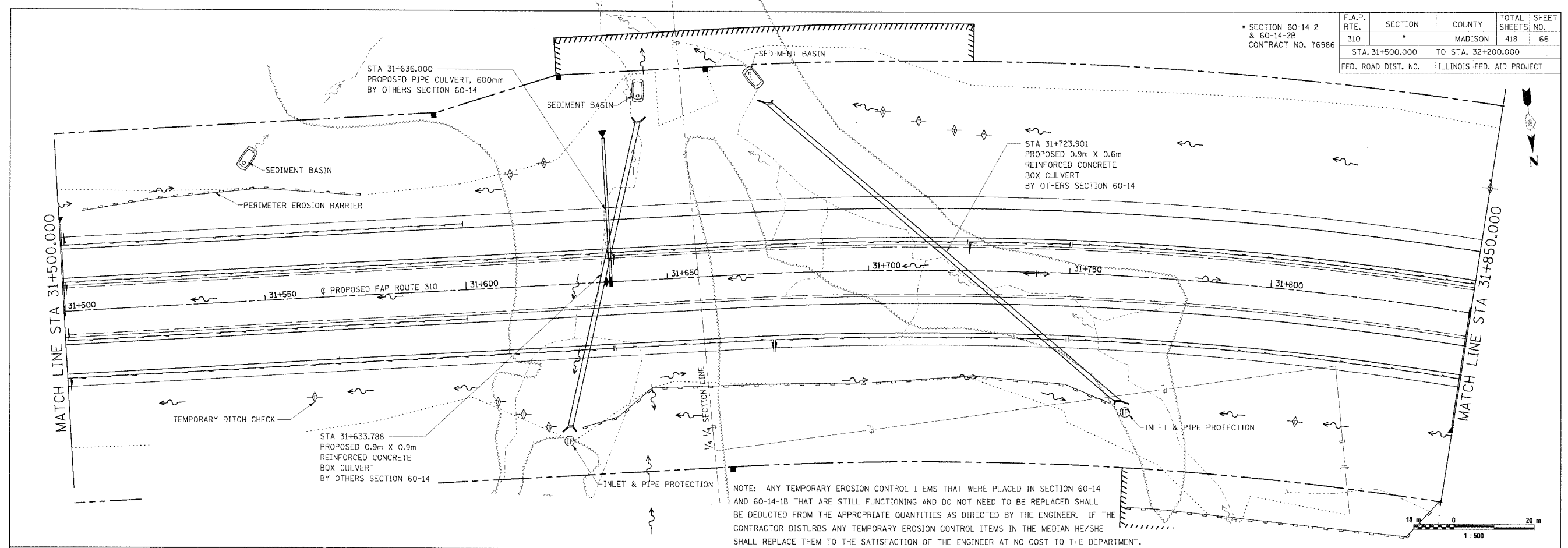


SECTION 60-14-2
& 60-14-2B
CONTRACT NO. 76986

F.A.P. RTE.	SECTION	COUNTY	TOTAL SHEETS	SHEET NO.
310		MADISON	418	66
STA. 31+500.000		TO STA. 32+200.000		
FED. ROAD DIST. NO.		ILLINOIS FED. AID PROJECT		



REVISIONS	
NAME	DATE

**ILLINOIS DEPARTMENT OF TRANSPORTATION
EROSION AND SEDIMENT
CONTROL PLAN**

FAP ROUTE 310
FAP ROUTE 310 SECTION 60-14-2, 60-14-2B
MADISON COUNTY

DRAWN BY BANDY
CHECKED BY STEUART

DATE

EROSION AND SEDIMENT CONTROL PLAN, FAP ROUTE 310, STA. 31+500.000 TO STA. 32+200.000

\\gdm\apps\p1\ecsp\06_405_7131\2007_1_04_05.plt