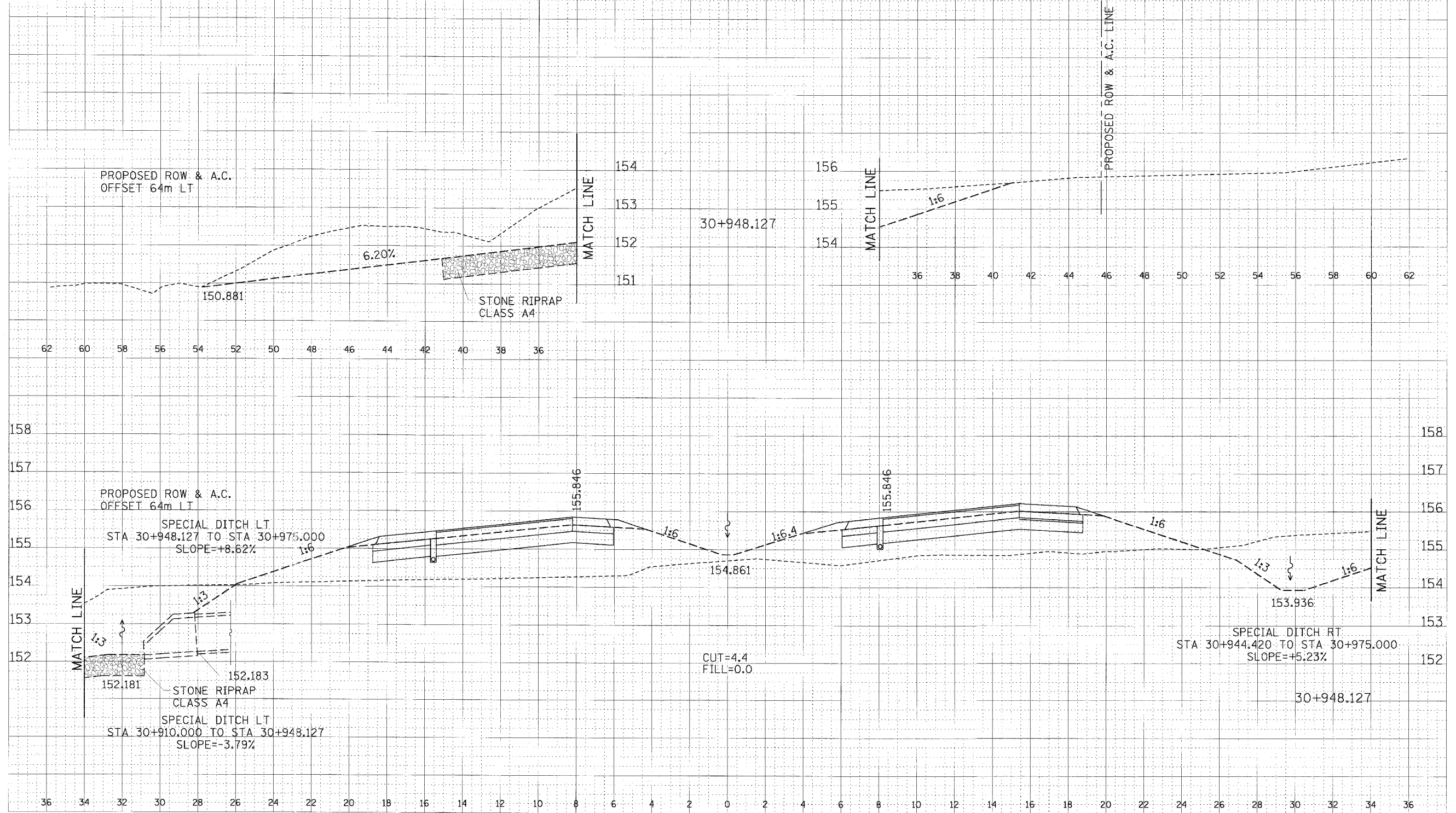


34 32 30 28 26 24 22 20 18 16 14 12 10 8 6 4 2 0 2 4 6 8 10 12 14 16 18 20 22 24 26

F.A.P. RTE.	SECTION	COUNTY	TOTAL SHEETS	SHEET NO.
310		MADISON	418	151
STA. 30+948.127		TO STA.		
FED. ROAD DIST. NO.	ILLINOIS FED. AID PROJECT			
SECTION 60-14-2				
SECTION 60-14-2B				

DATE	
BY	
CHECKED	
DESIGNED	
DRAWN	
APPROVED	
DATE	
BY	
CHECKED	
DESIGNED	
DRAWN	
APPROVED	

DATE	
BY	
CHECKED	
DESIGNED	
DRAWN	
APPROVED	
DATE	
BY	
CHECKED	
DESIGNED	
DRAWN	
APPROVED	



CROSS SECTION, FAP ROUTE 310, STA 30+948.127

\\pww\pww\share\3003\3003.dwg 1/15/2007 2:25:46 PM