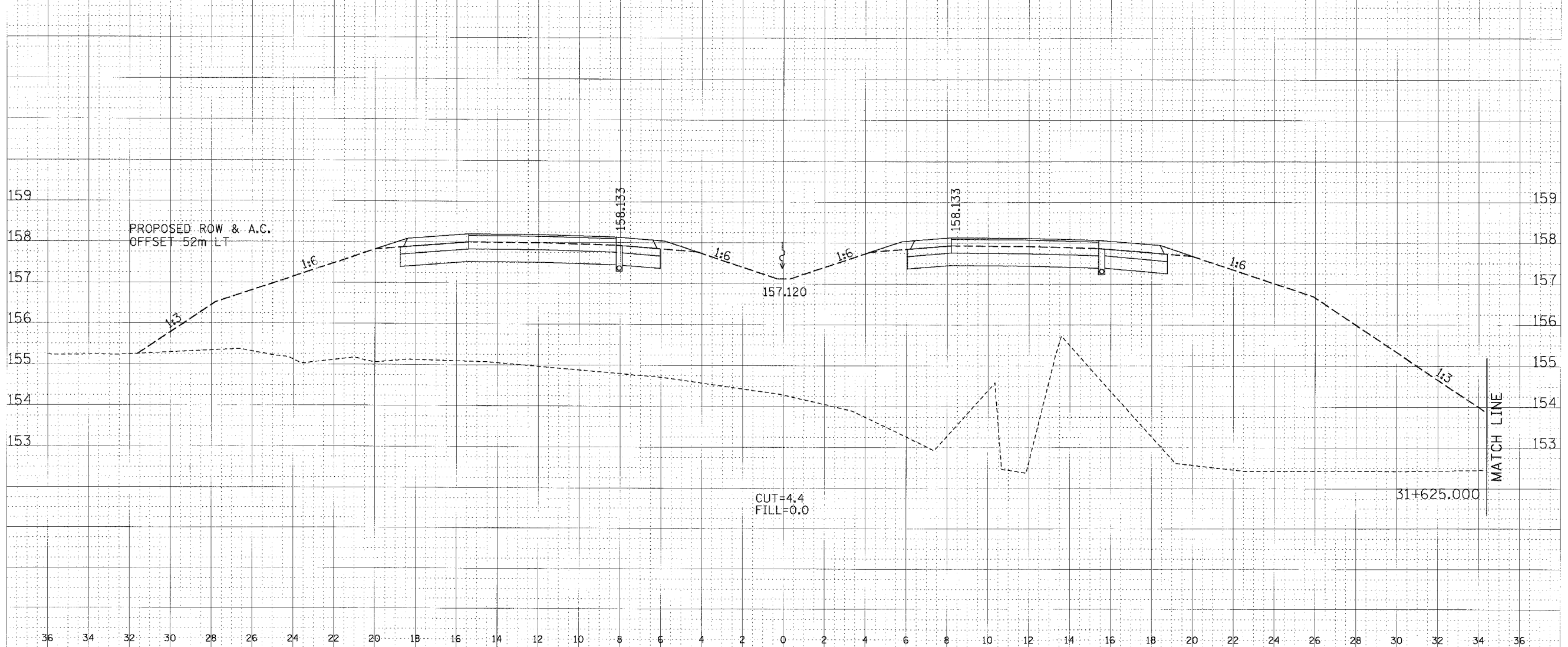
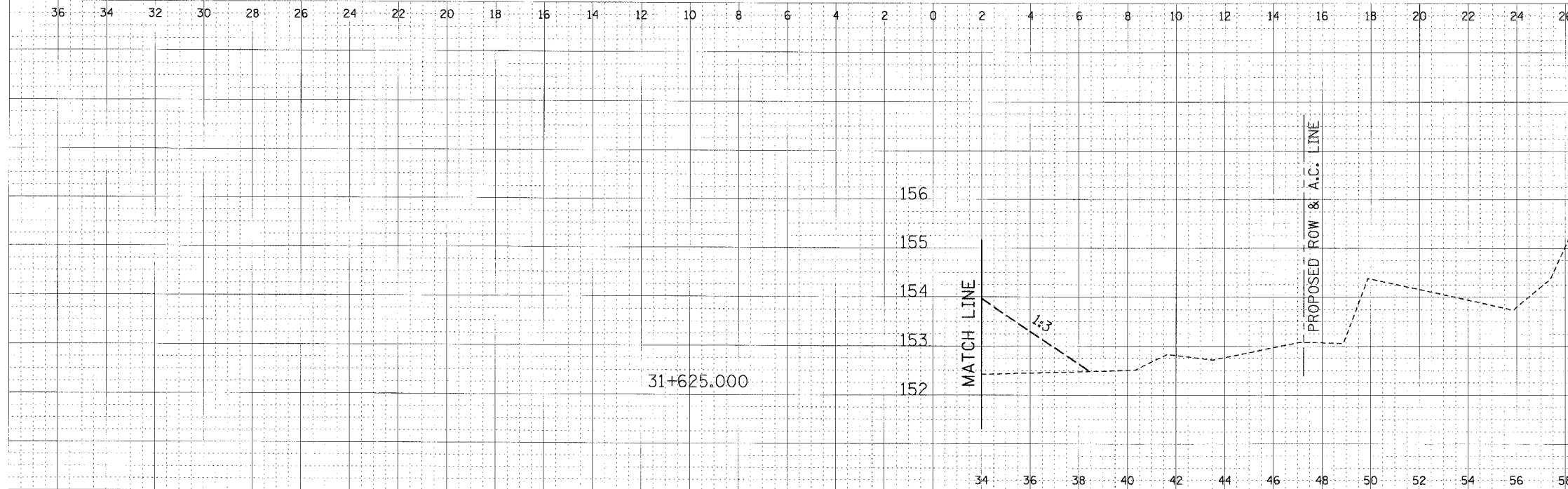


F.A.P. RTE.	SECTION	COUNTY	TOTAL SHEETS NO.	SHEET NO.
310		MADISON	418	179
STA. 31+625.000		TO STA.		
FED. ROAD DIST. NO.		ILLINOIS	FED. AID PROJECT	
SECTION 60-14-2		SECTION 60-14-2B		



DATE	BY
DESIGNED	PLANNED
NOTED	CHECKED
NO.	

DATE	BY
DESIGNED	PLANNED
NOTED	CHECKED
NO.	

CROSS SECTION, FAP ROUTE 310, STA 31+625.000