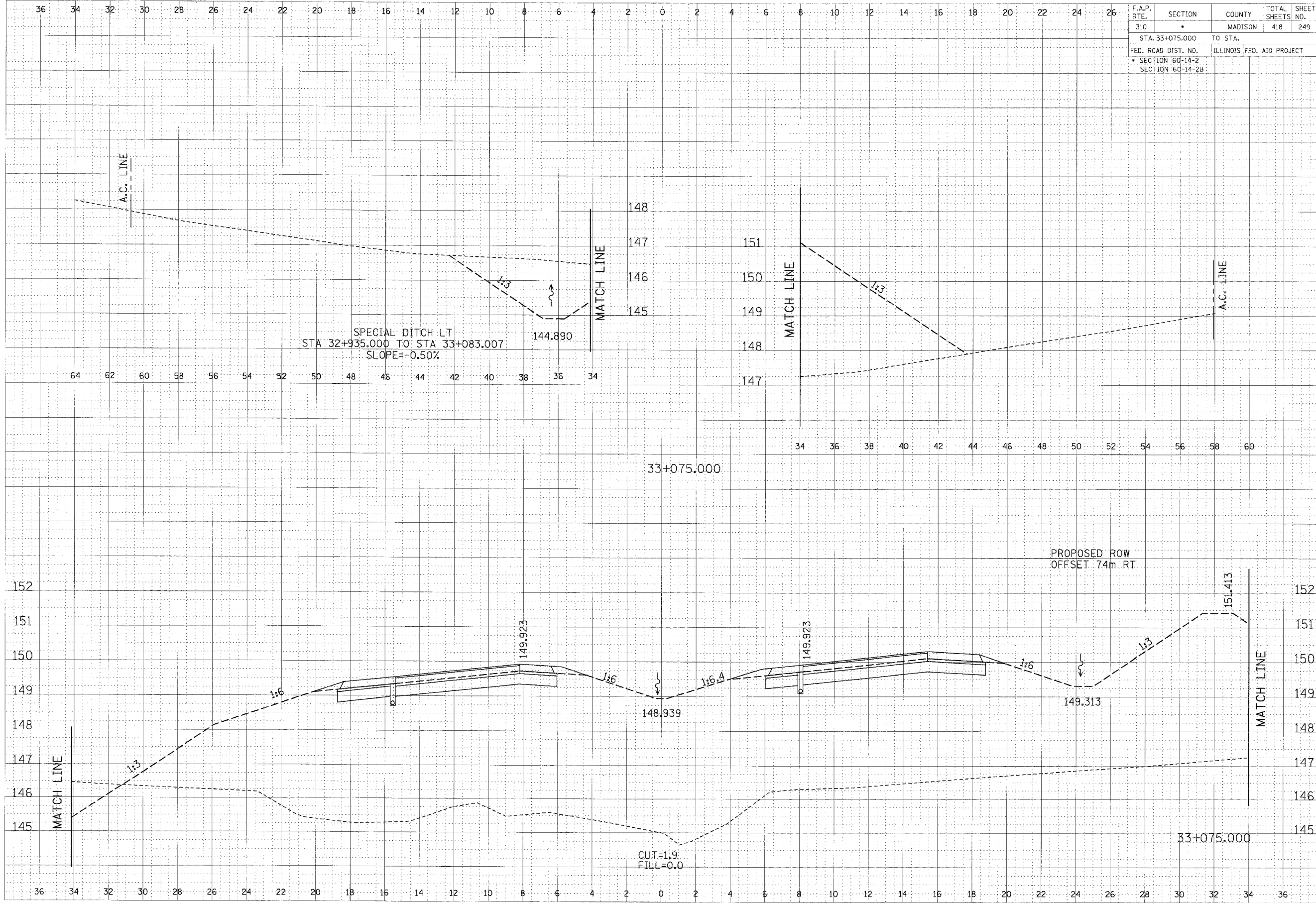


F.A.P. RTE. 310	SECTION •	COUNTY MADISON	TOTAL SHEETS 418	SHEET NO. 249
STA. 33+075.000		TO STA.		
FED. ROAD DIST. NO.		ILLINOIS FED. AID PROJECT		
• SECTION 60-14-2				
SECTION 60-14-2B				

FINAL	BY	DATE
DRAWN		
CHECKED		
APPROVED		
NO.		

ORIGINAL	BY	DATE
DRAWN		
CHECKED		
APPROVED		
NO.		



CROSS SECTION, FAP ROUTE 310, STA 33+075.000