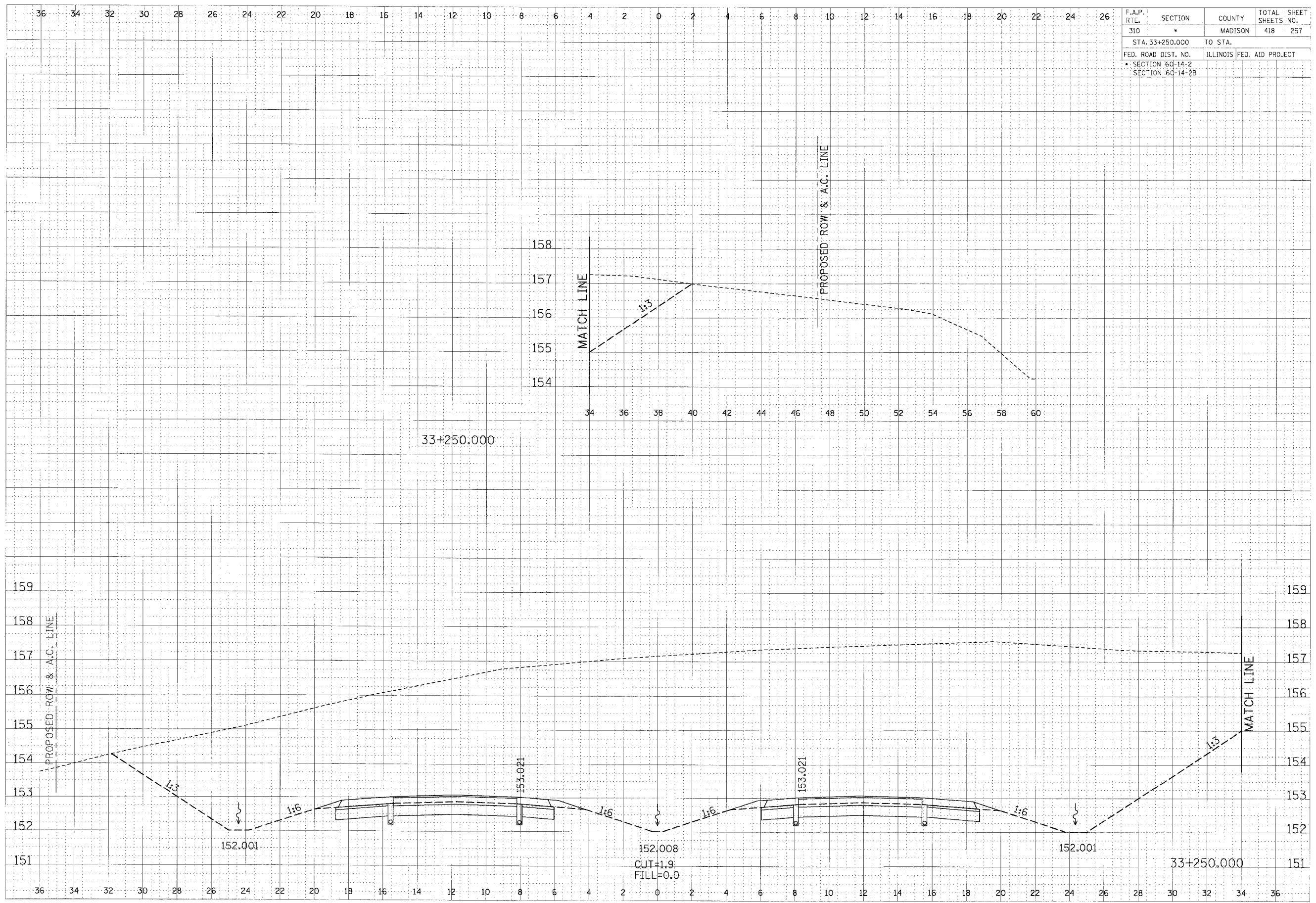


F.A.P. RTE.	SECTION	COUNTY	TOTAL SHEETS NO.
310	*	MADISON	418 257
STA. 33+250.000	TO STA.		
FED. ROAD DIST. NO.	ILLINOIS	FED. AID PROJECT	
SECTION 60-14-2			
SECTION 60-14-2B			

FINN	DATE
SURVEY	BY
NOTE BOOK	
NO.	

ORIGINAL	DATE
SLICED	BY
NOTE BOOK	
NO.	



CROSS SECTION, FAP ROUTE 310, STA 33+250.000