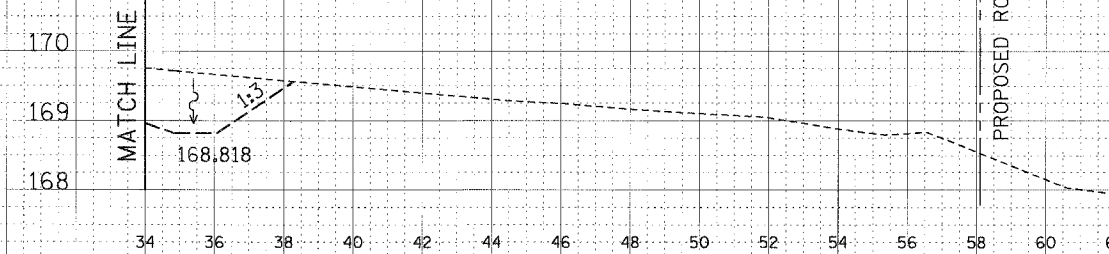
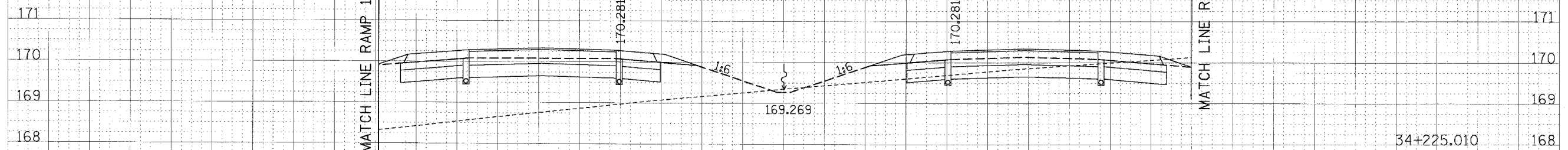


F.A.P. RTE.	SECTION	COUNTY	TOTAL SHEETS	SHEET NO.
310	*	MADISON	418	288
STA. 34+225.010		TO STA.		
FED. ROAD DIST. NO.	ILLINOIS	FED. AID PROJECT		
* SECTION 60-14-2				
* SECTION 60-14-2B				

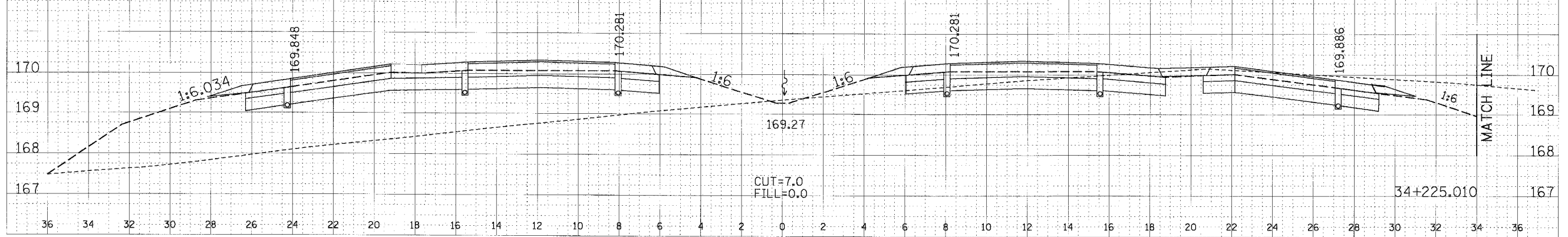
FAP RTE 310 STA 34+225.010/-19.181m LT=
RAMP 1 STA 1+380.663/-4.900m LT

PROPOSED ROW & A.C. LINE
OFFSET 39m LT

FAP RTE 310 STA 34+225.010/19.379m RT=
RAMP 2 STA 1+246.414/-7.679m LT



PROPOSED ROW & A.C. LINE
OFFSET 38m LT



CROSS SECTION, FAP ROUTE 310, STA 33+225.010

DATE	
BY	
DESIGNED	
CHECKED	
IN CHARGE	
APPROVED	
NO. OF SHEETS	
NO. OF SHEETS CHECKED	
NO.	

DATE	
BY	
DESIGNED	
CHECKED	
IN CHARGE	
APPROVED	
NO. OF SHEETS	
NO. OF SHEETS CHECKED	
NO.	