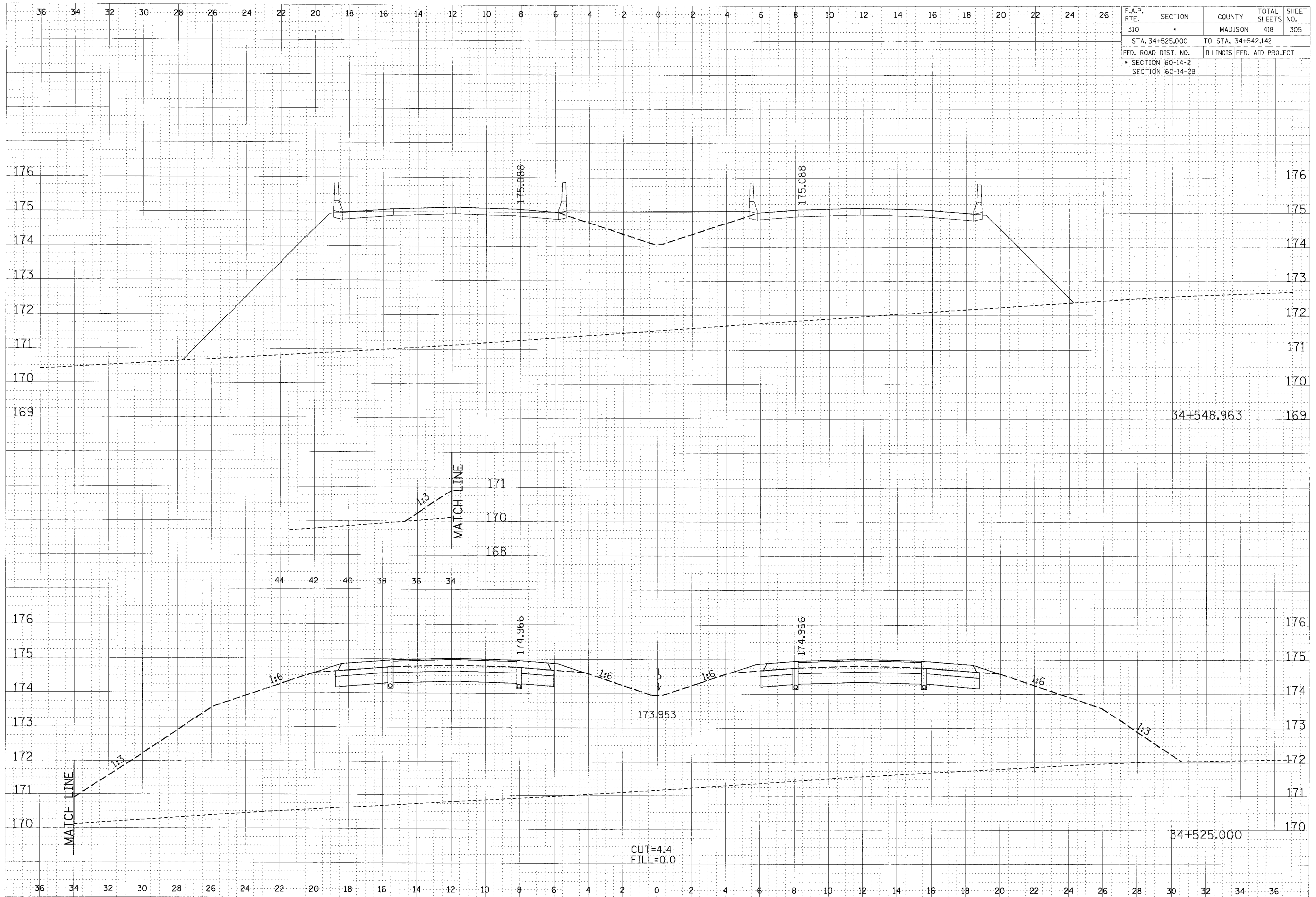


F.A.P. RTE.	SECTION	COUNTY	TOTAL SHEETS	SHEET NO.
310	*	MADISON	418	305
STA. 34+525.000		TO STA. 34+542.142		
FED. ROAD DIST. NO.	ILLINOIS	FED. AID PROJECT		
SECTION 60-14-2				
SECTION 60-14-2B				

FINAL SURVEY	DATE
NOTED	BY
NOTE BOOK	PLOTTED
NO.	TEMP. AREAS CHECKED

ORIGINAL SURVEY	DATE
NOTED	BY
NOTE BOOK	PLOTTED
NO.	TEMP. AREAS CHECKED



CROSS SECTION, FAP ROUTE 310, STA 34+525.000 TO STA 34+548.963