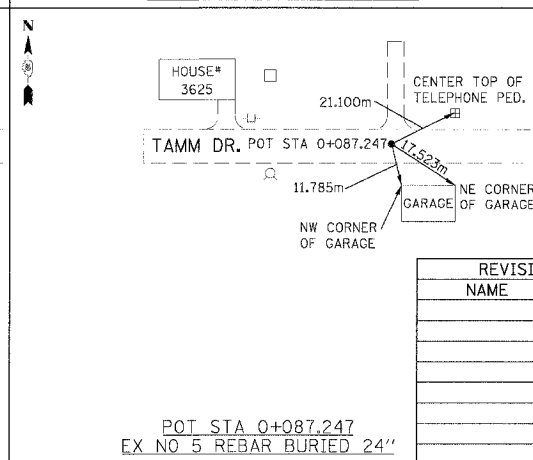
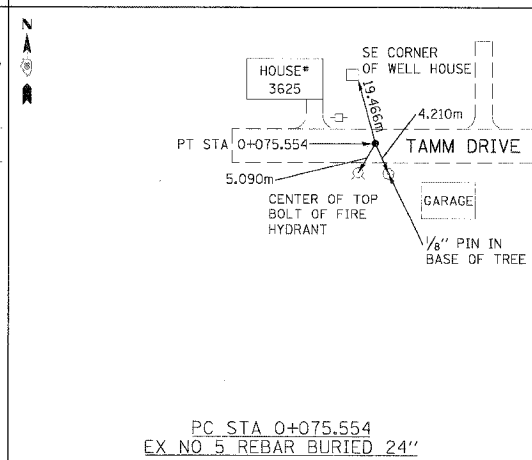
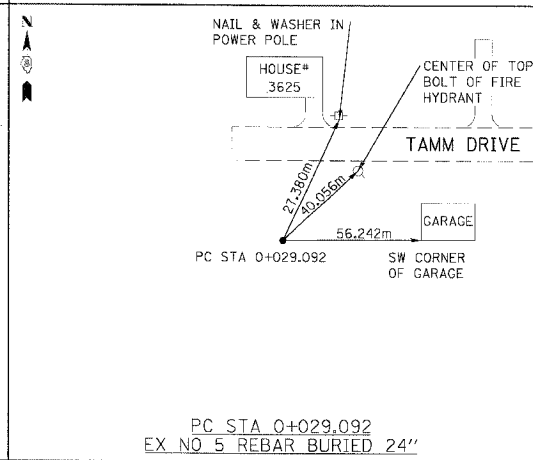
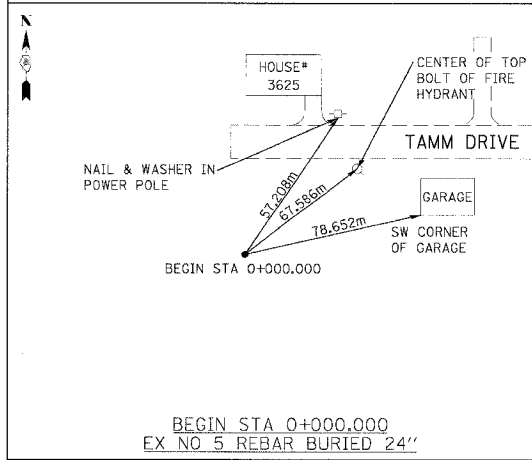
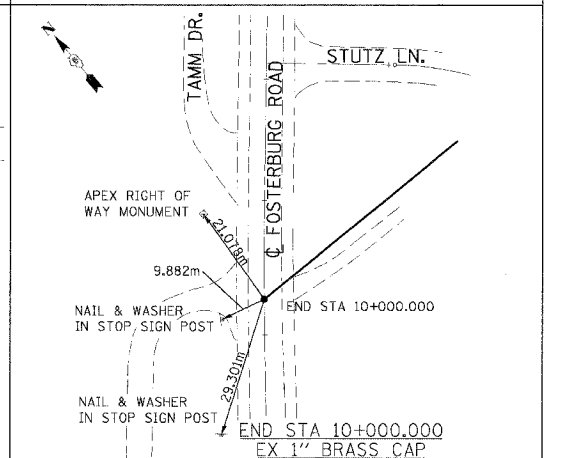
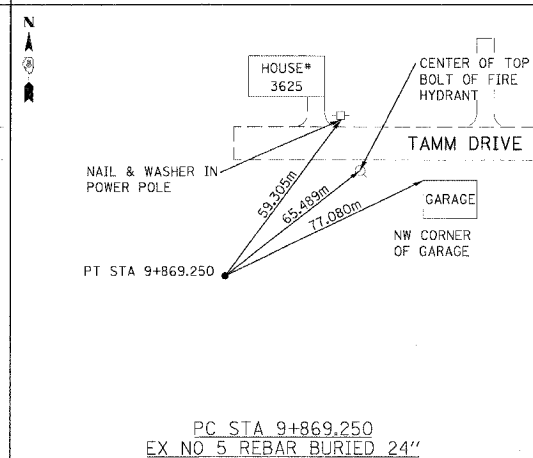
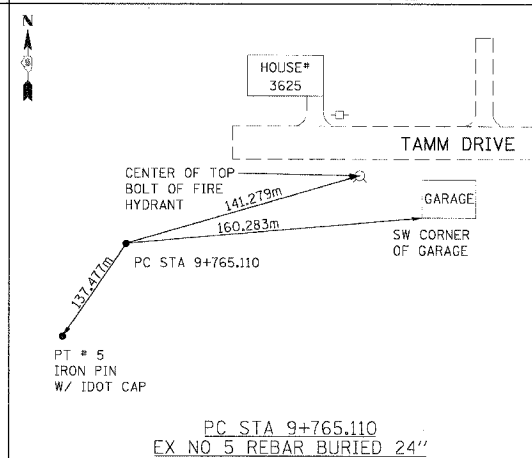
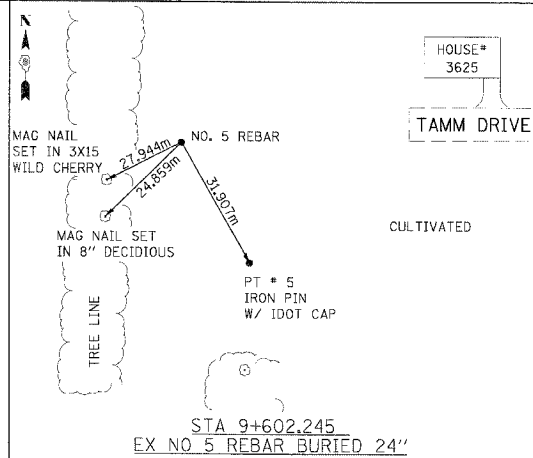
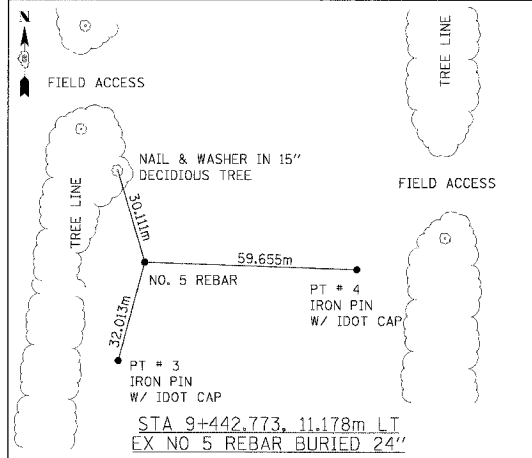
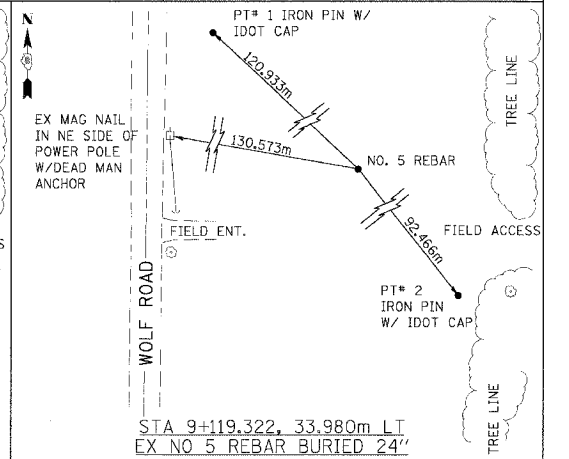
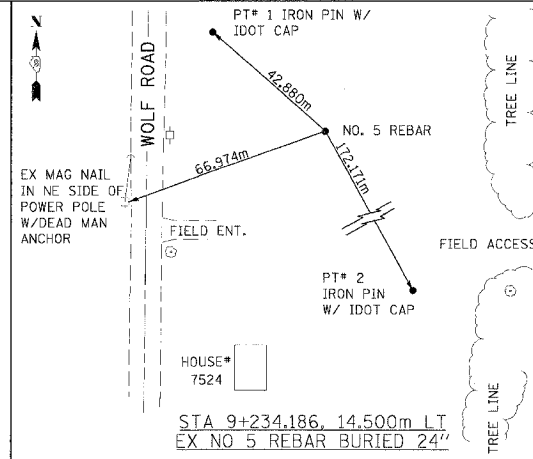
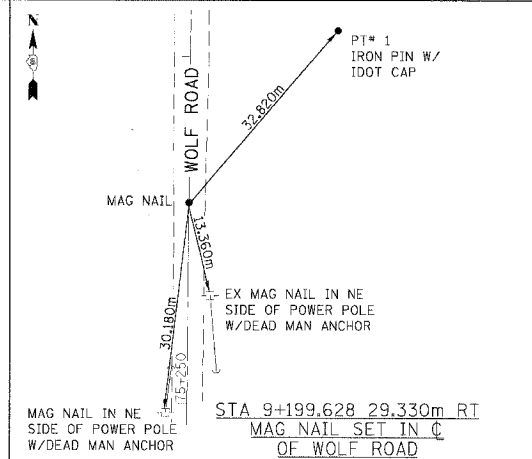
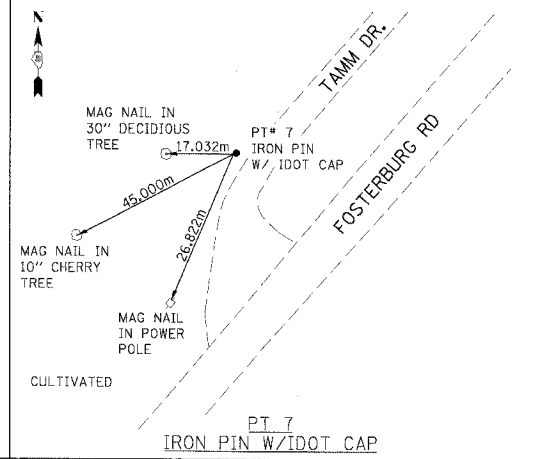
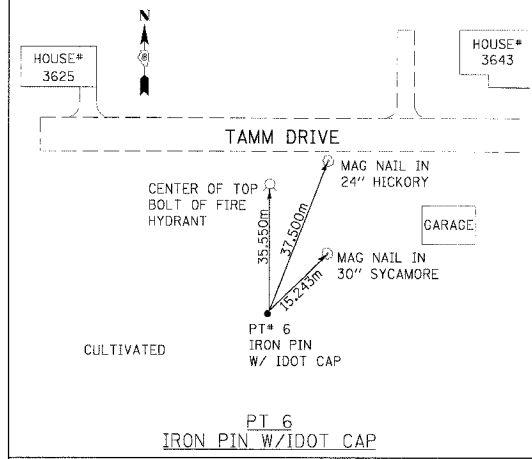


|  |          |                  |              |           |
|--|----------|------------------|--------------|-----------|
| F.A.P. RTE.                                    | SECTION  | COUNTY           | TOTAL SHEETS | SHEET NO. |
| 310  | *        | MADISON          | 418          | 375       |
| STA.   | TO STA.  |                  |              |           |
| FED. ROAD DIST. NO.                            | ILLINOIS | FED. AID PROJECT |              |           |
| *SECTION 60-14-2 & 60-14-2B CONTRACT NO. 76986 |          |                  |              |           |



| REVISIONS |      |
|-----------|------|
| NAME      | DATE |
|           |      |
|           |      |
|           |      |
|           |      |
|           |      |
|           |      |
|           |      |
|           |      |
|           |      |

ILLINOIS DEPARTMENT OF TRANSPORTATION  
**TIE POINTS**  
**FRONTAGE ROAD**  
 FAP ROUTE 310  
 FAP ROUTE 310 SECTION 60-14-2, 60-14-2B  
 MADISON COUNTY  
 DATE \_\_\_\_\_ DRAWN BY BANDY  
 CHECKED BY STEUART