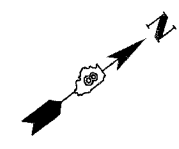
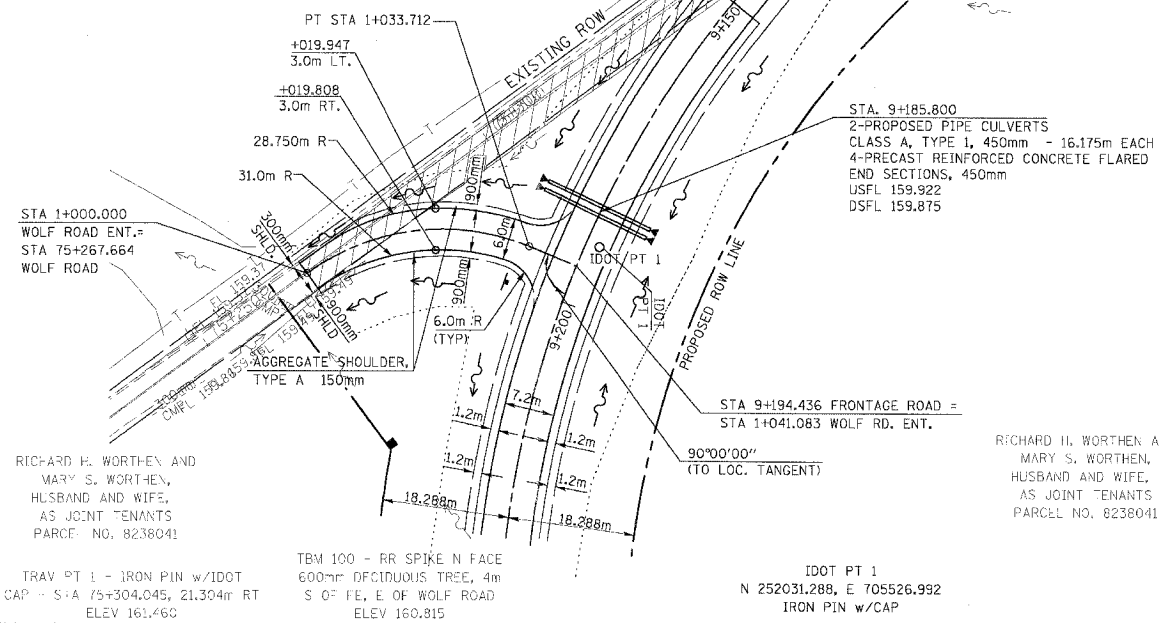


F.A.P. RTE.	SECTION	COUNTY	TOTAL SHEETS	SHEET NO.
310		MADISON	418	380
STA. 1+000.000		TO STA. 1+035.283		
FED. ROAD DIST. NO.		ILLINOIS FED. AID PROJECT		
		SECTION 60-14-2 & 60-14-2B CONTRACT NO. 76986		



PROP. CURVE P.WOLF-1
 PI STA = 1+018.493
 $\Delta = 58^\circ 31' 56''$ (RT)
 R = 33.000 m
 T = 18.493 m
 L = 33.712 m
 E = 4.828 m
 P.C. STA = 1+000.000
 P.T. STA = 1+033.712

PROP. CURVE ALA1
 PI STA = 9+211.417
 $\Delta = 67^\circ 02' 33''$ (LT)
 R = 150.000 m
 T = 99.363 m
 L = 175.517 m
 E = 29.925 m
 P.C. STA = 9+112.054
 P.T. STA = 9+287.571
 $e = 3.10\%$
 SE RUNOFF = 25m
 TR = 12m
 SE ATTAINED = STA 9+120.390
 SE REMOVED = STA 9+279.240



RICHARD H. WORTHEN AND
 MARY S. WORTHEN,
 HUSBAND AND WIFE,
 AS JOINT TENANTS
 PARCELS NO. 8238041

RICHARD H. WORTHEN AND
 MARY S. WORTHEN,
 HUSBAND AND WIFE,
 AS JOINT TENANTS
 PARCELS NO. 8238041

TRAV PT 1 - IRON PIN w/IDOT
 CAP - S+A 75+304.045, 21.304m RT
 ELEV 161.466

TBM 100 - RR SPIKE N FACE
 600mm DECIDUOUS TREE, 4m
 S OF FE, E OF WOLF ROAD
 ELEV 160.815

IDOT PT 1
 N 252031.288, E 705526.992
 IRON PIN w/CAP

LEGEND

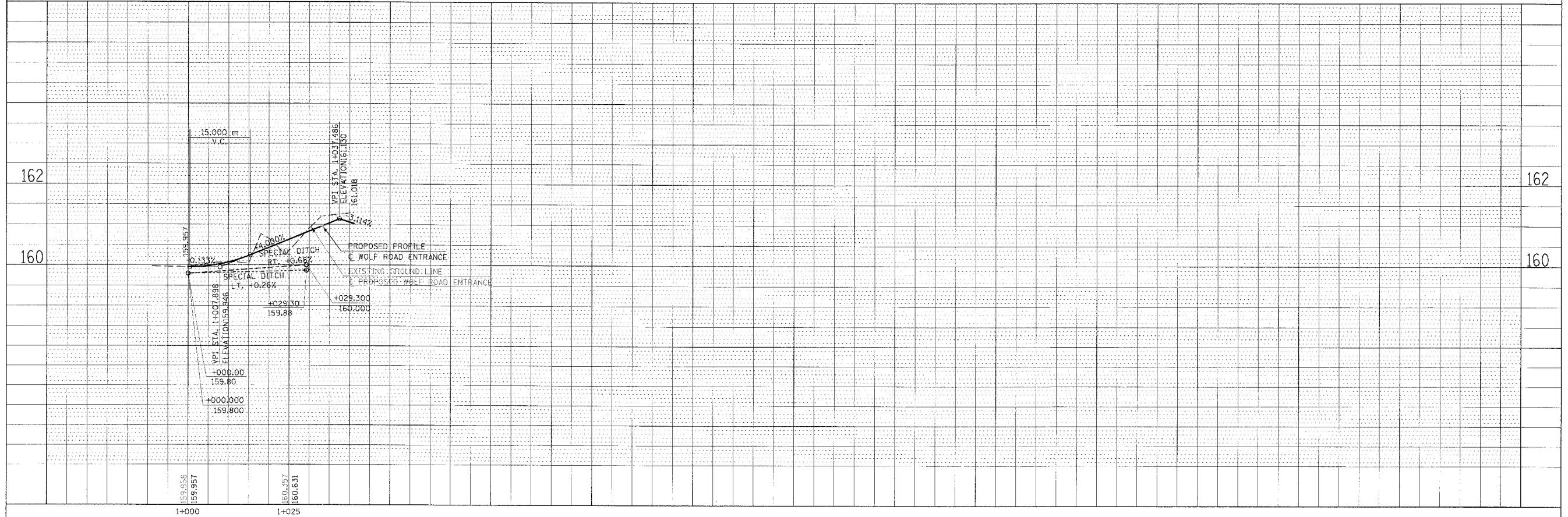
BITUMINOUS REMOVAL (MISCELLANEOUS)

TREE REMOVAL LIMITS

0 m 10 m 20 m 30 m
 SCALE 1:500

DATE	BY	DESCRIPTION

DATE	BY	DESCRIPTION



DATE: 11/22/2007
 TIME: 7:43:15 AM
 USER: jh111

PLAN & PROFILE, WOLF ROAD ENTRANCE, STA 1+000.000 TO STA 0+035.283