

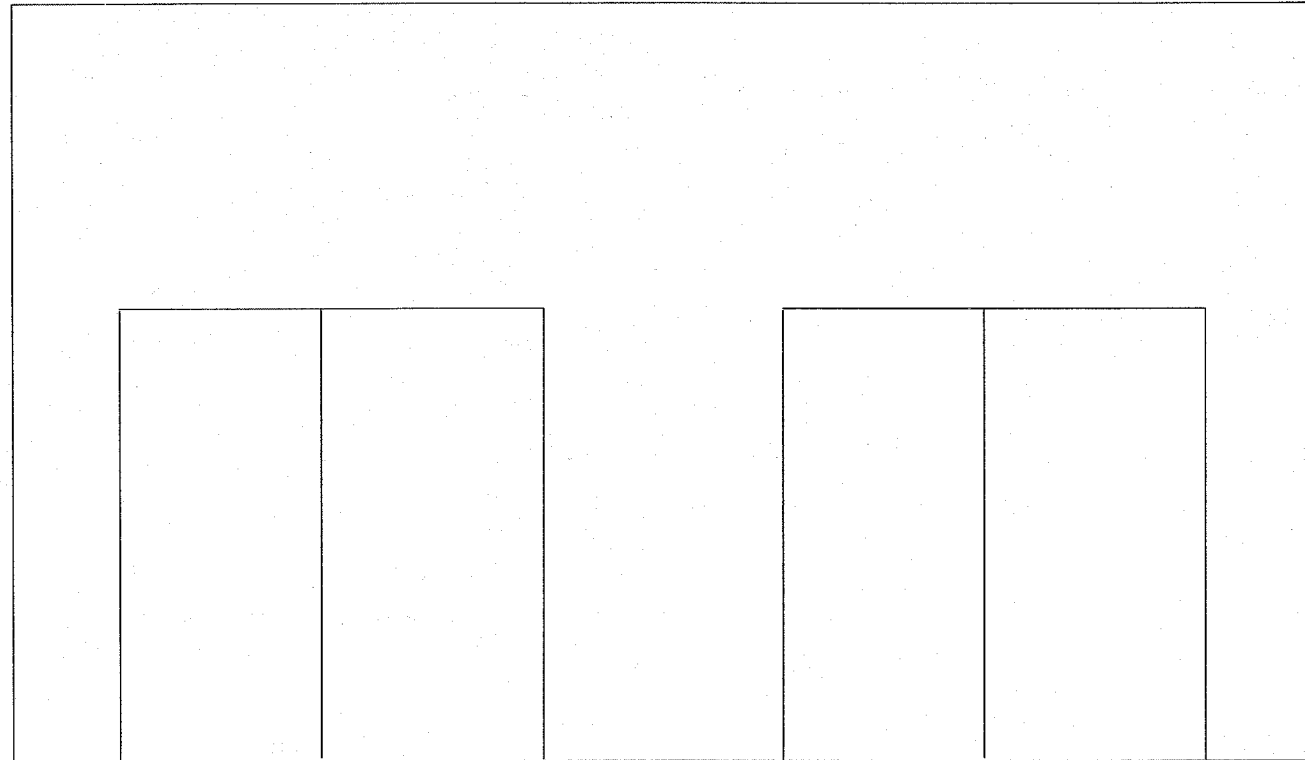
F.A.I. RTE.	SECTION	COUNTY	TOTAL SHEETS	SHEET NO.
255	*	MADISON	4	4
STA.		TO STA.		
FED. ROAD DIST. NO.	ILLINOIS FED. AID PROJECT			

\* DIST 8 DEEP WELLS 2007-2

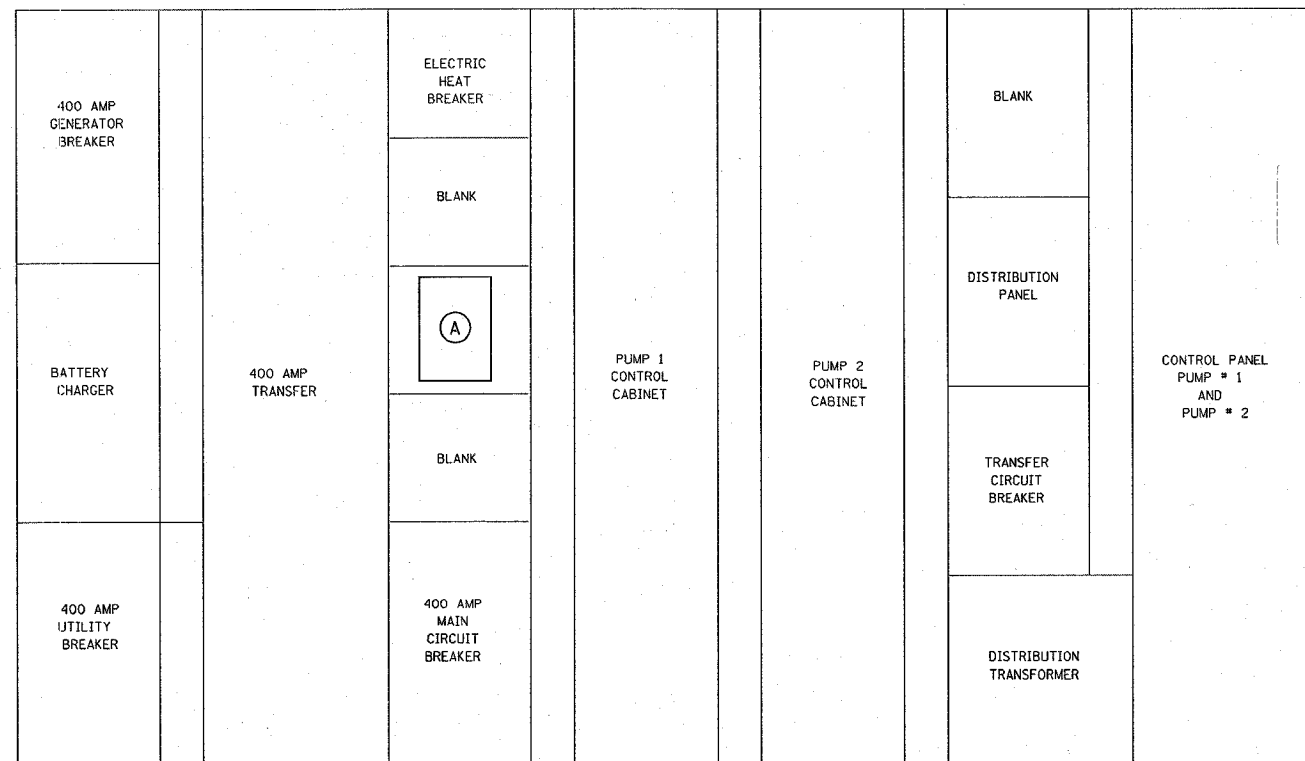
LEGEND



PROPOSED ANNUNCIATOR



FRONT OF PUMP STATION



EXISTING MOTOR CONTROL CENTER

REVISIONS	
NAME	DATE

ILLINOIS DEPARTMENT OF TRANSPORTATION  
**MOTOR CONTROL CENTER LAYOUT**  
 FAP ROUTE 255  
 SECTION DIST 8 DEEP WELLS 2007-2  
 COUNTY MADISON

SCALE: VERT.  
 DATE:       HORIZ.

DRAWN BY  
 CHECKED BY

PLOT DATE \* DATES  
 FILE NAME \* FILE#  
 REFERENCE \* FILE#