

PROP. CURVE 4
 PI STA. = 23+08.50
 $\Delta = 2^\circ 20' 00''$ (LT)
 $D = 0^\circ 41' 55''$
 $R = 8,200.00'$
 $T = 166.95'$
 $L = 333.94'$
 $E = 1.70'$
 P.C. STA. = 21+41.50
 P.T. STA. = 24+75.44
 SE = N.C.

PROP. CURVE C
 PI STA. = 23+57.76 29.16 LT
 $\Delta = 2^\circ 20' 00''$ (LT)
 $D = 0^\circ 41' 55''$
 $R = 8,200.00'$
 $T = 166.95'$
 $L = 333.94'$
 $E = 1.70'$
 P.C. STA. = 21+90.16 31.86 LT
 P.T. STA. = 25+25.18 30.00 LT

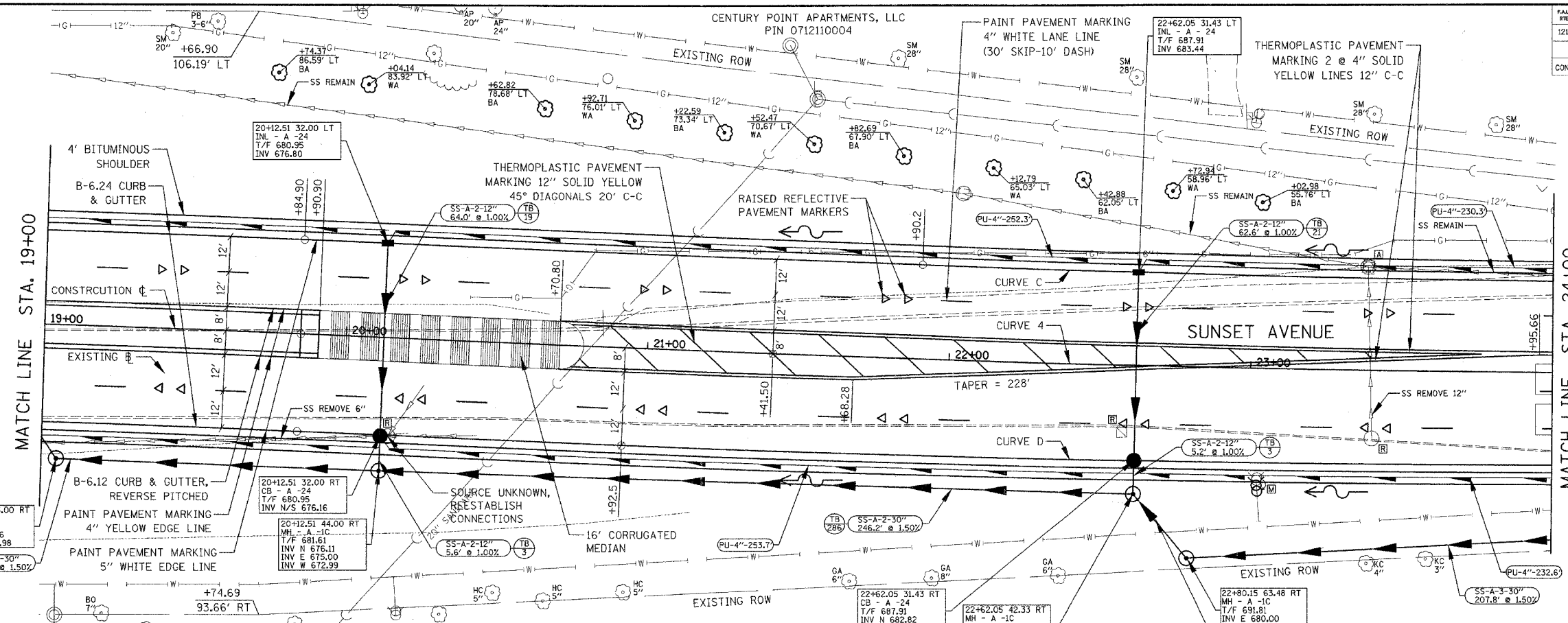
PROP. CURVE D
 PI STA. = 22+59.55 32.85 RT
 $\Delta = 2^\circ 20' 00''$ (LT)
 $D = 0^\circ 41' 48''$
 $R = 8,224.00'$
 $T = 167.48'$
 $L = 334.92'$
 $E = 1.71'$
 P.C. STA. = 20+92.54 30.00 RT
 P.T. STA. = 24+26.38 30.15 RT

DATE	
BY	
REVISION	
NO.	
DATE	
BY	
REVISION	
NO.	

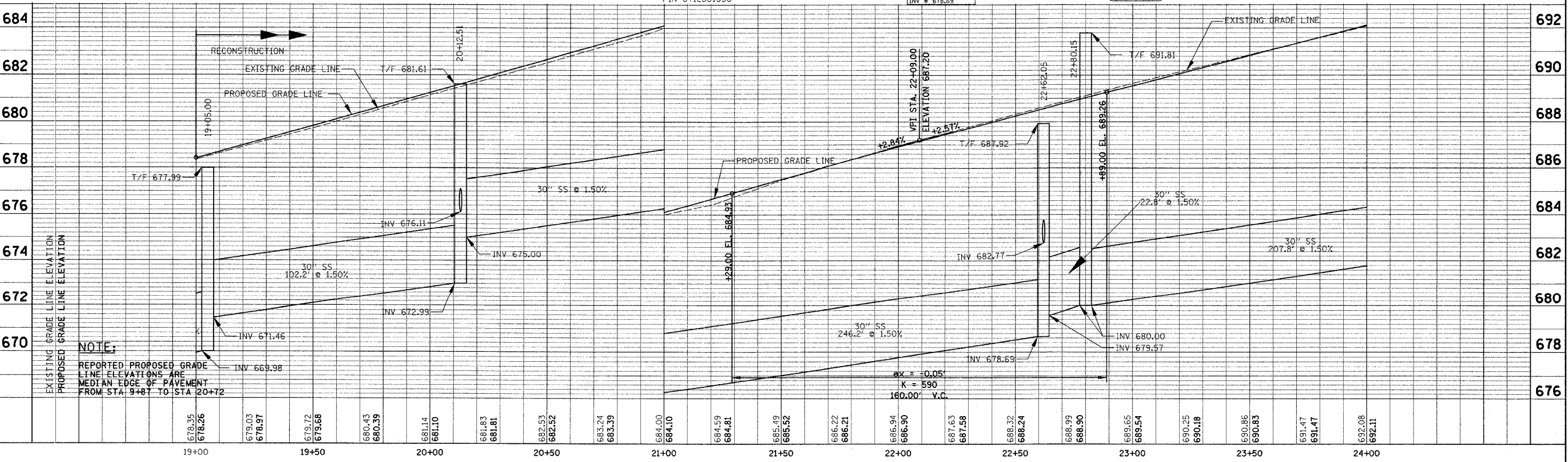
DATE	
BY	
REVISION	
NO.	
DATE	
BY	
REVISION	
NO.	

PLAN	SECTION	COUNTY	TOTAL SHEETS	SHEET NO.
1215	99-00169-05-WR	LAKE	153	33
PLAN & PROFILE STA. 19+00 TO STA. 24+00				
CONTRACT NO. 83847				
SUNSET AVENUE				

PROPOSED TREES:
 BA = BLUE ASH
 RO = RED OAK
 SWO = SWAMP WHITE OAK
 WA = WHITE ASH
 SEE SCHEDULE 5 & TREE LEGEND ON SHEET 12 FOR MORE INFORMATION



NOTE: ALL STATION AND OFFSET INFORMATION BASED ON CONSTRUCTION CENTERLINE



NOTE:
 REPORTED PROPOSED GRADE LINE ELEVATIONS ARE MEDIAN EDGE OF PAVEMENT FROM STA 19+87 TO STA 20+72

