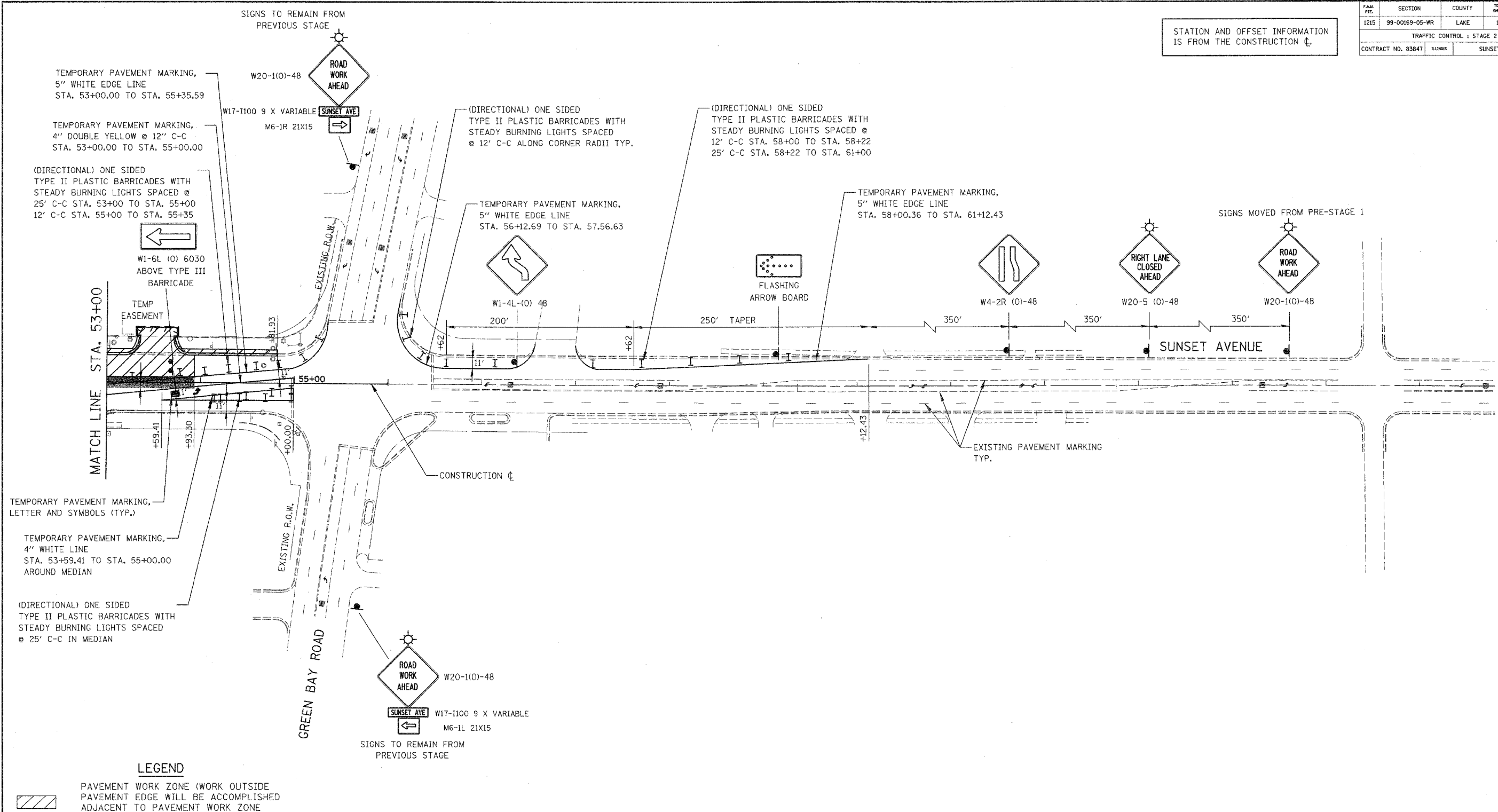


PLAN SHEET	SECTION	COUNTY	TOTAL SHEETS	SHEET NO.
1215	99-00169-05-WR	LAKE	153	50
TRAFFIC CONTROL - STAGE 2				
CONTRACT NO. 83847		SUNSET AVENUE		

STATION AND OFFSET INFORMATION IS FROM THE CONSTRUCTION CL.

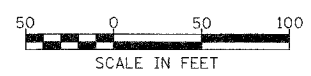


DATE	BY	REVISIONS

DATE	BY	REVISIONS

- LEGEND**
- PAVEMENT WORK ZONE (WORK OUTSIDE PAVEMENT EDGE WILL BE ACCOMPLISHED ADJACENT TO PAVEMENT WORK ZONE DURING THAT STAGE)
  - PROPOSED PAVEMENT WIDENING PLACED IN THIS STAGE
  - TEMPORARY PAVEMENT PLACED IN THIS STAGE
  - TEMPORARY PAVEMENT PLACED BY OTHERS (INTERSECTION PROJECT)
  - DIRECTION OF TRAFFIC
  - SIGN LOCATION

FOR ADVANCE SIGN PLACEMENT  
USE IDOT STANDARD NO. 701606



REVISIONS	
NAME	DATE

**Lake County**  
Division of Transportation

**SUNSET AVENUE**  
TRAFFIC CONTROL  
STAGE 2